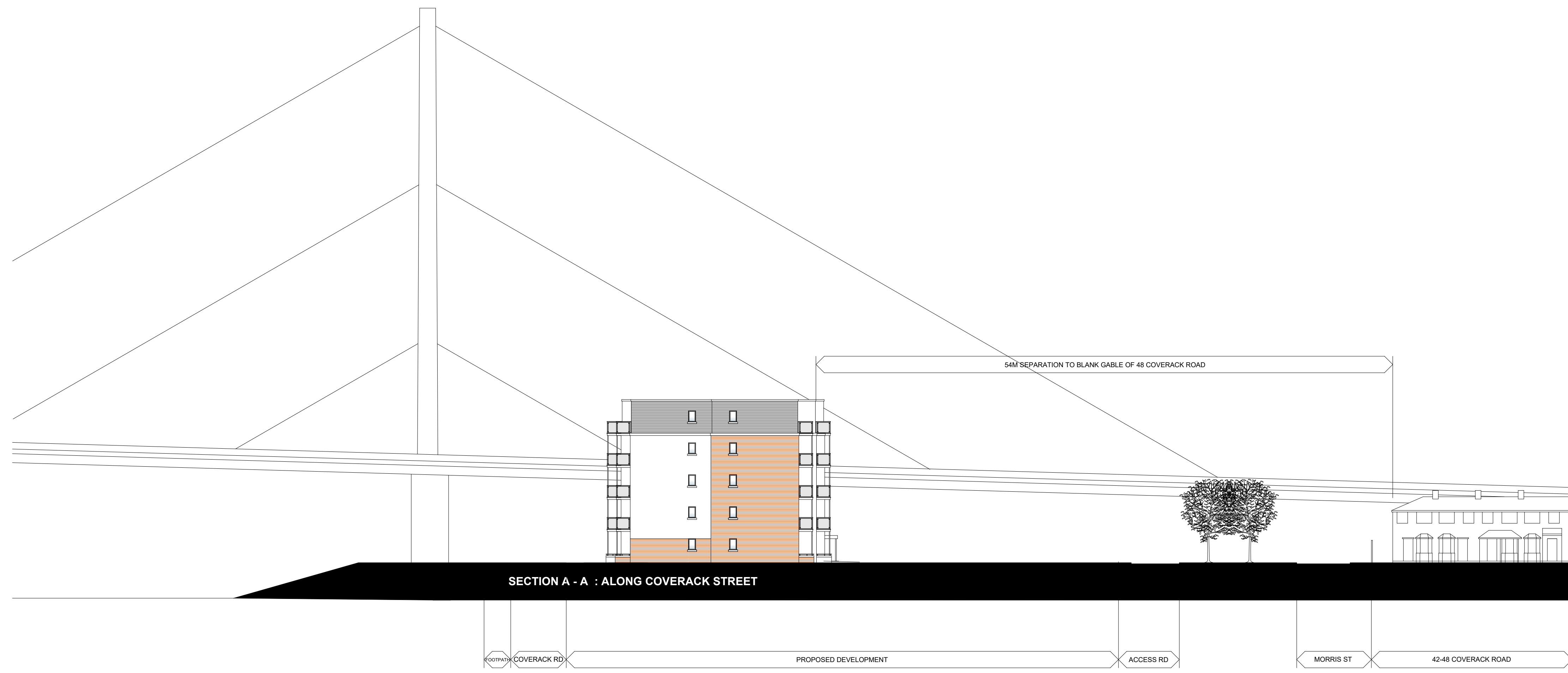
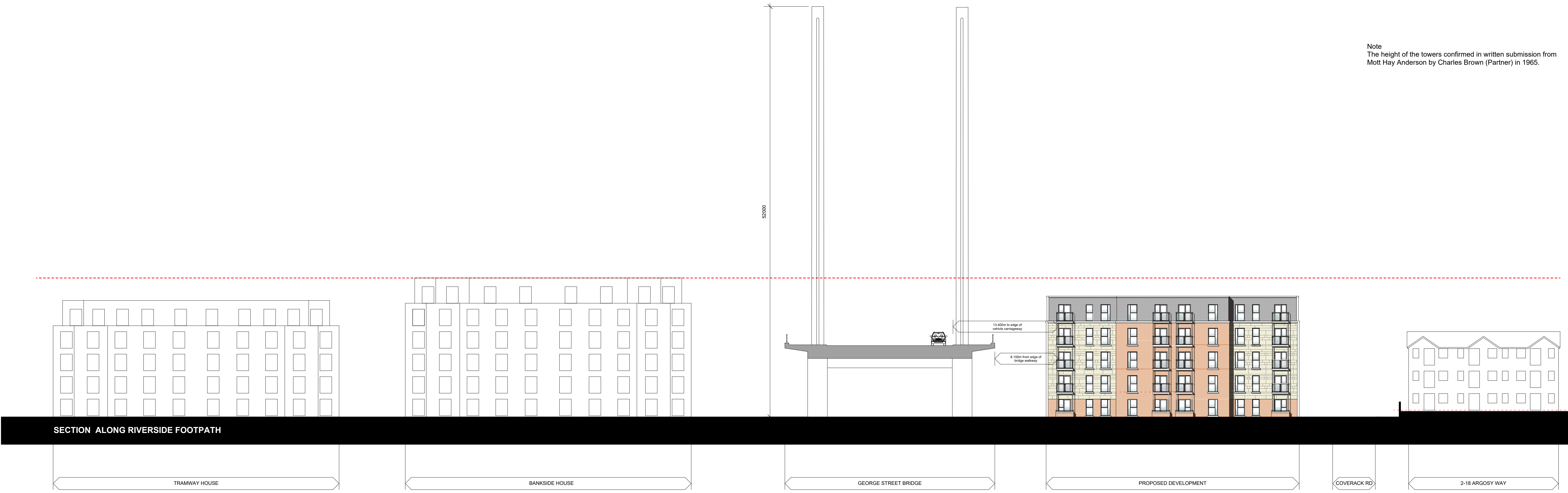


Note
The height of the towers confirmed in written submission from Mott Hay Anderson by Charles Brown (Partner) in 1965.



Kennedy James Griffiths
Chartered Architects and Project Managers
Project

**Proposed Apartments
Coverack Road, Newport**

T 02920 545100
10 Victoria Park Court
516 Cowbridge Road East
Cardiff
CF5 1DB

Title	Date
Context Elevations	10 12 2024
Status	Scale
Planning PAC	1:250@A1 1:500@A3
Job Number	Revision
1671PAC-08	Drawn by DJ

Use figured dimensions where possible. Do not scale for construction purposes. This drawing is copyright.