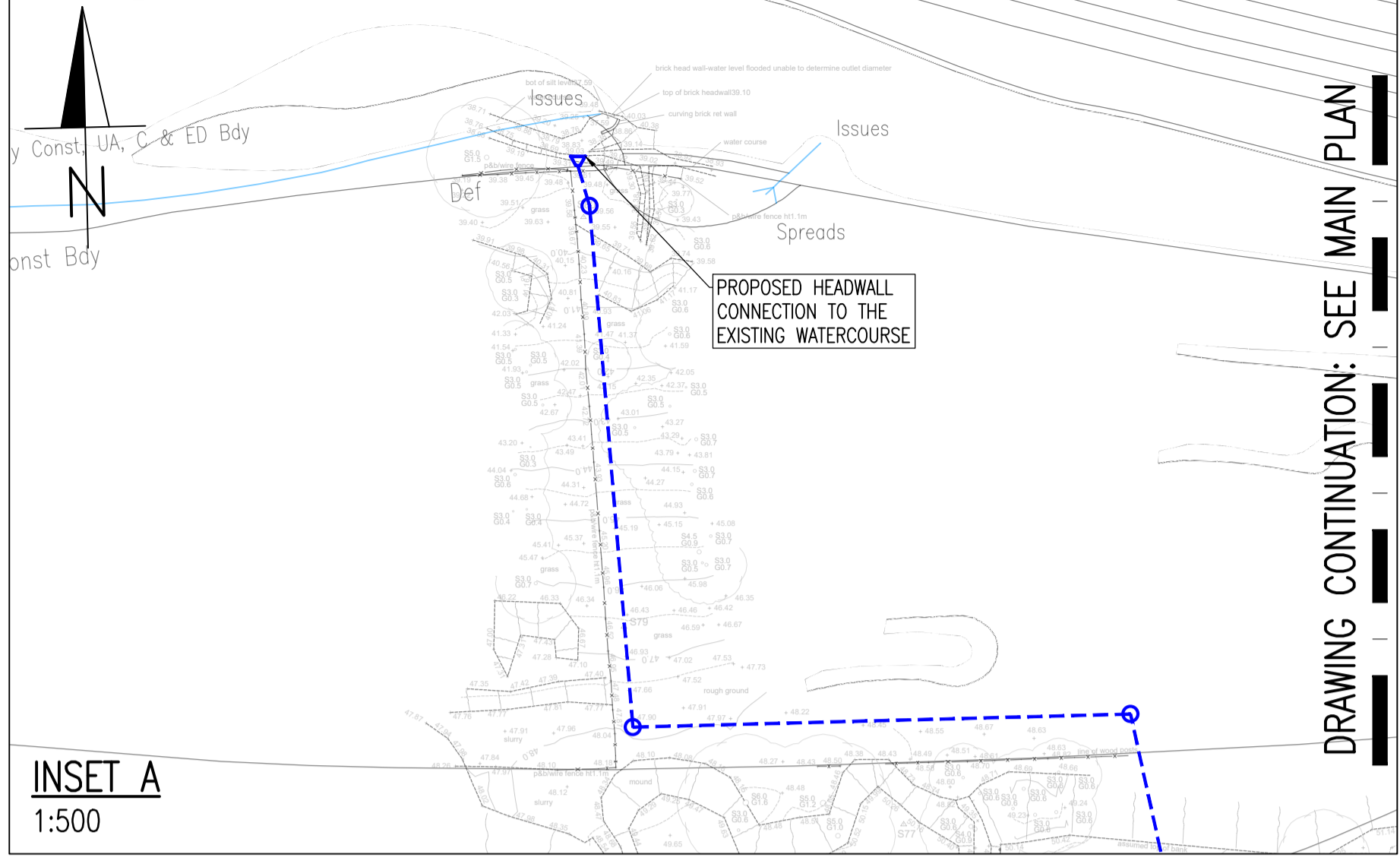


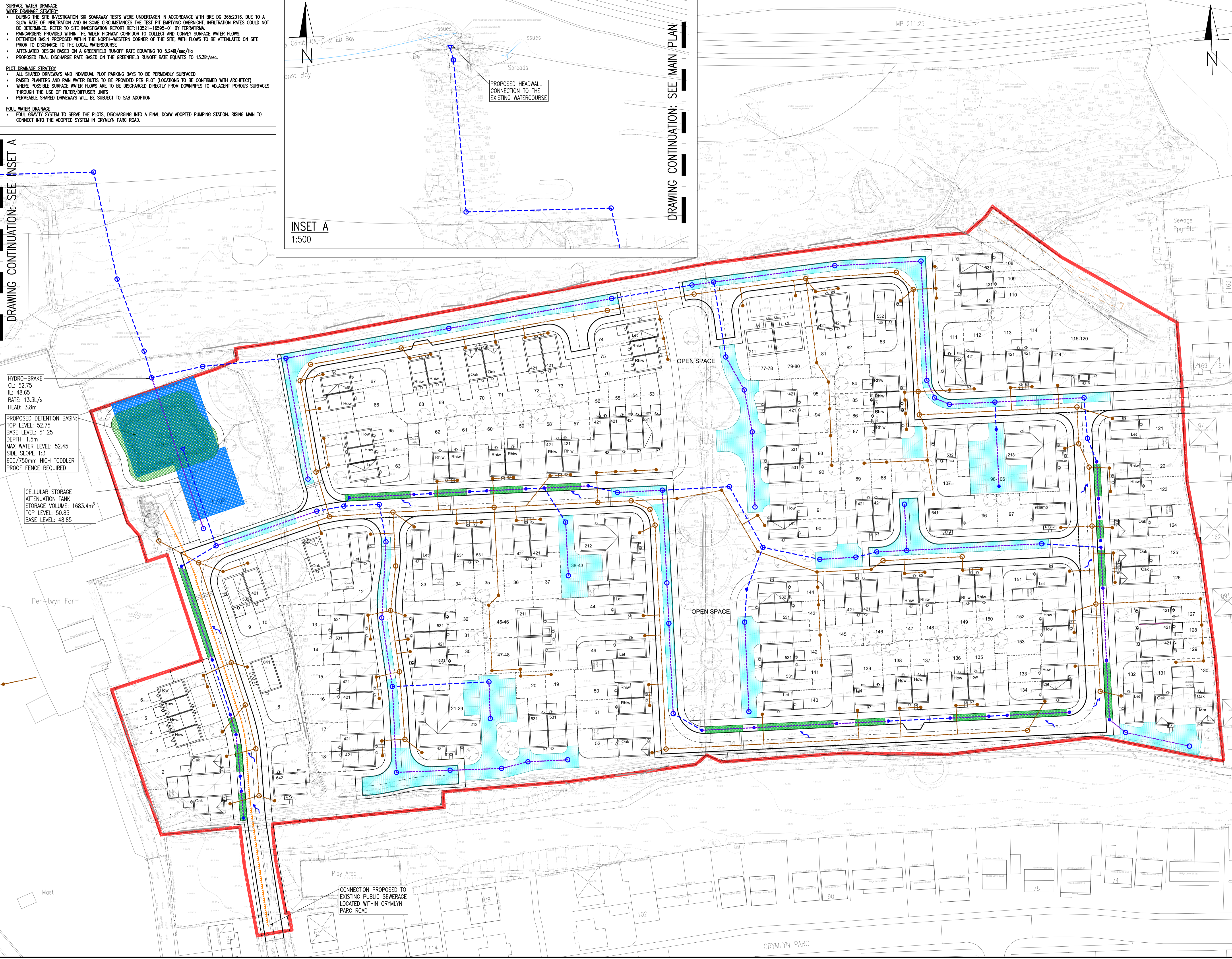
- SURFACE WATER DRAINAGE**  
**WIDER DRAINAGE STRATEGY**
- DURING THE SITE INVESTIGATION SIX SOAKAWAY TESTS WERE UNDERTAKEN IN ACCORDANCE WITH BRE DG 365:2016. DUE TO A SLOW RATE OF INFILTRATION AND IN SOME CIRCUMSTANCES THE TEST PIT EMPTYING OVERNIGHT, INFILTRATION RATES COULD NOT BE DETERMINED. REFER TO SITE INVESTIGATION REPORT REF:110521-16505-01 BY TERRAFIRMA.
  - RAINGARDENS PROVIDED WITHIN THE WIDER HIGHWAY CORRIDOR TO COLLECT AND CONVEY SURFACE WATER FLOWS.
  - DETENTION BASIN PROPOSED WITHIN THE NORTH-WESTERN CORNER OF THE SITE, WITH FLOWS TO BE ATTENUATED ON SITE PRIOR TO DISCHARGE TO THE LOCAL WATERCOURSE.
  - ATTENUATED DESIGN BASED ON A GREENFIELD RUNOFF RATE EQUATING TO 5.24l/sec/ha
  - PROPOSED FINAL DISCHARGE RATE BASED ON THE GREENFIELD RUNOFF RATE EQUATES TO 13.3l/sec.
- PLOT DRAINAGE STRATEGY**
- ALL SHARED DRIVEWAYS AND INDIVIDUAL PLOT PARKING BAYS TO BE PERMEABLY SURFACED
  - RAISED PLANTERS AND RAIN WATER BUTTS TO BE PROVIDED PER PLOT (LOCATIONS TO BE CONFIRMED WITH ARCHITECT)
  - WHERE POSSIBLE SURFACE WATER FLOWS ARE TO BE DISCHARGED DIRECTLY FROM DOWNPIPES TO ADJACENT POROUS SURFACES THROUGH THE USE OF FILTER/DIFFUSER UNITS
  - PERMEABLE SHARED DRIVEWAYS WILL BE SUBJECT TO SAB ADOPTION
- FOUL WATER DRAINAGE**
- FOUL GRAVITY SYSTEM TO SERVE THE PLOTS, DISCHARGING INTO A FINAL DCWW ADOPTED PUMPING STATION. RISING MAIN TO CONNECT INTO THE ADOPTED SYSTEM IN CRYMLYN PARC ROAD.



DRAWING CONTINUATION: SEE INSET A

DRAWING CONTINUATION: SEE MAIN PLAN

- HYDRO-BRAKE**  
CL: 52.75  
IL: 48.65  
RATE: 13.3l/s  
HEAD: 3.8m
- PROPOSED DETENTION BASIN:**  
TOP LEVEL: 52.75  
BASE LEVEL: 51.25  
DEPTH: 1.5m  
MAX WATER LEVEL: 52.45  
SIDE SLOPE 1:3  
600/750mm HIGH TODDLER  
PROOF FENCE REQUIRED
- CELLULAR STORAGE ATTENUATION TANK**  
STORAGE VOLUME: 1683.4m<sup>3</sup>  
TOP LEVEL: 50.85  
BASE LEVEL: 48.85



- GENERAL NOTES**
1. DO NOT SCALE THIS DRAWING.
  2. CONTRACTOR TO CHECK ALL DIMENSIONS AND REPORT ALL ERRORS AND OMISSIONS TO THE ENGINEER.
  3. ANY DISCREPANCY TO BE REPORTED IMMEDIATELY TO THE ENGINEER.
  4. THIS DRAWING TO BE READ IN CONJUNCTION WITH ALL RELEVANT ARCHITECTS, SUBCONTRACTORS AND SPECIALISTS DRAWINGS AND SPECIFICATIONS.
- KEY**
- PROPOSED STORM DRAINAGE PIPEWORK
  - - - PROPOSED STORM DRAINAGE PERFORATED PIPEWORK
  - DCWW FOUL DRAINAGE
  - 90mmø O/D HPPE SDR17 ADOPTABLE RISING MAIN
  - PERMEABLE SURFACING
  - PROPOSED RAINGARDENS
  - PROPOSED DETENTION BASIN
  - PROPOSED ATTENUATION TANK

Rev.	Detail	By	Date
E	STRATEGY REVISED TO SUIT LATEST SITE PROPOSALS	TE	17.10.24
D	DRAWING AMENDED TO SUIT COMMENTS	AJ	03.03.23
C	DRAWING AMENDED TO SUIT COMMENTS	LO	11.05.21
B	DRAINAGE STRATEGY AMENDED TO REFLECT UPDATED ARCHITECT LAYOUT.	DH	05.05.21
A	WESTERN BASIN OMITTED, NORTHERN DRAINAGE ARRANGEMENT AMENDED.	DH	05.03.21

Revisions

Reinforcement schedules nos.

Structural & Civil Engineering Consultants

First Floor  
7 St James Crescent  
Swansea  
SA1 6DP

Telephone: +44 1792 473 182  
e-mail: admin@cb3consult.co.uk  
web: www.cb3consult.co.uk

Client

Project  
**PHASE 5 RESIDENTIAL DEVELOPMENT AT CRYMLYN GROVE, SKEWEN**

Drawing Title  
**PROPOSED DRAINAGE STRATEGY**

**PRELIMINARY**

Project No. <b>C1600</b>	Drawing No. <b>C-SK03</b>
Scales 1:500	Date 04.03.21
Drawn DH	Checked DH
Sheet Size A1	Revision <b>E</b>

© This drawing may not be copied without prior written permission