

Notes

- Drawing is copyright of fenton-reece
- Only labelled dimensions are to be taken from this drawing. Do not scale from this drawing.
- Contractor is responsible for taking and checking all dimensions, below ground services and setting out.
- All elements of design should be checked on site and conflicts reported to responsible designer. If in doubt ask



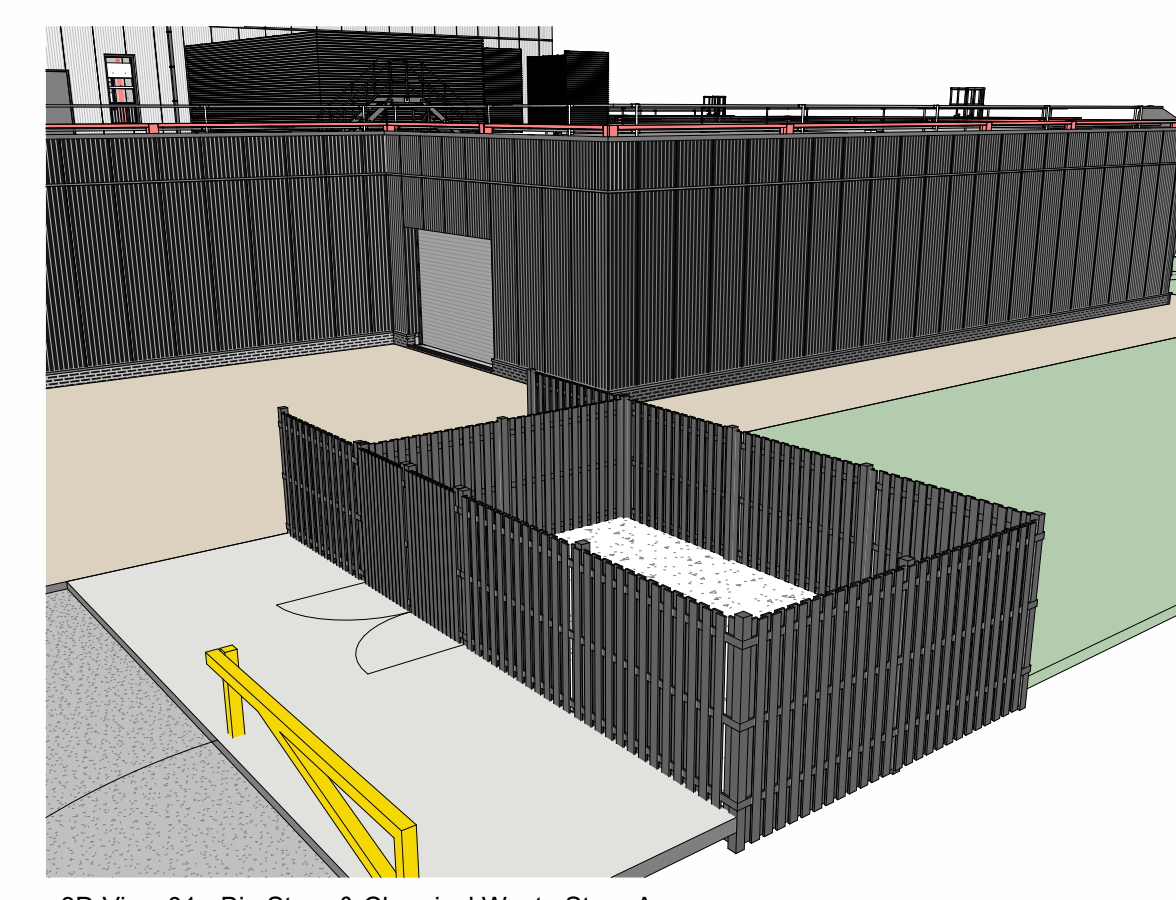
- Legend**
- Boundary:**
- Red Line Boundary please refer to Arcadia drawing for application boundary
- Fencing:**
- Timber Post & Rail: 150:** Post and Rail Fencing supplied by Jacksons Fencing equal approved.
1200 mm high, 150mm x 75mm timber. Half round vertical posts. 150mm x 75mm rails, three rails. To be set in concrete. Nailed half round post and rail fencing. Posts incorporate special galvanneal fitting embedded in top to prevent splitting. Extra-long tapered set ends. All fittings are galvanneal. Half round stump at the end of the posts for increased stability. Timber to be pre-treated and stained black.
 - Weld Mesh Fence: 30m:** EuroGuard Platform Fencing supplied by Jacksons Fencing or equal approved.
Please refer to 3D Views below for clarity, fencing to be cut and shaped to fit circumference of concrete to ensure secure compound. All cut panels to be sanded and re-treated on-site to ensure no exposed metal to avoid rusting or exposure of sharp ends. Height varies between 2000mm and 2400mm. 600mm x 100mm rectangular holes (RHS) with anti-rattle connectors. Posts are hot-dipped galvanneal to BS EN 10255. Posts to be powder-coated, black RAL 9005. Fittings to be galvanneal and powder-coated, black RAL 9005 to BS EN 13438.
 - Timber Hit & Miss: 500:** Vertical Hit and Miss Fencing supplied by Jacksons Fencing or equal approved.
1800 mm high panel height, 2000mm nominal height including gravel base. 2700 mm inner clear panel, to be set in concrete. Posts incorporate special galvanneal fitting embedded in top to prevent splitting. Extra-long tapered set ends. All fittings are galvanneal. Timber to be pre-treated.
- Gates:**
- Access Swing Gate: 3m:** Swing Arm Barrier. Supplied by Neagline Solutioner equal approved. To be measured on site, overall opening width, double leaf, 6000mm. Galv steel. Powder Coated Yellow.
 - Weld Mesh Gate: 6m:** 2000mm high, overall opening width, double leaf, 2400mm. Powder Coated Steel. Colour: Black (RAL9005).
 - Timber Hit & Miss Gate: 3m:** 2000mm high, overall opening width, double leaf, 2400mm. Colour: Black painted timber (RAL9005).
- Canopies:**
- Gas Store Canopy: 6m:** 2000mm high 5 degree pitch, 7000mm x 6000mm Gabled Canopy. All Material Laminar equal approved.
Non-slip surface. Galv steel. Colour: All Black (RAL9005).
 - Bike Store Canopy: 4m:** Terrace Deck Bike Shelter equal approved. With sedum green roof. Colour: Black (RAL9005).
- Site Furniture:**
- Benches: 3m:** Either directed by SteelReef equal approved. 2 Beams. Recycled Timber Slats with Cor-Ten Steel base. Surface mounted, engineer to ensure suitable base before surface.
 - Bike Hoop: 16m:** 2100mm high vertical hit and miss timber fence to be painted black to match architecture. Colour: Black painted timber (RAL9005).
 - Fixed Ballast: 27m:** Semi-Dressed (pre-finish) Basaltic Stone Ballast by Broxap equal approved. 1000mm above ground, grade 504 ballast, black. Road level.
 - Drug Ballast: 6m:** Heavy Duty Removable Ballast by Broxap equal approved. 1000mm above ground, removable set and fixing, black and white banding finish.
 - Ball Posts: 6m:** Bespoke supplied by GreenSilber equal approved. Cast concrete in natural white finish 2500mm height.
 - Two EV Charging Post: 6m:** Please refer to IES for electrical specification and any necessary protection.



3D View 01 - Gas Store



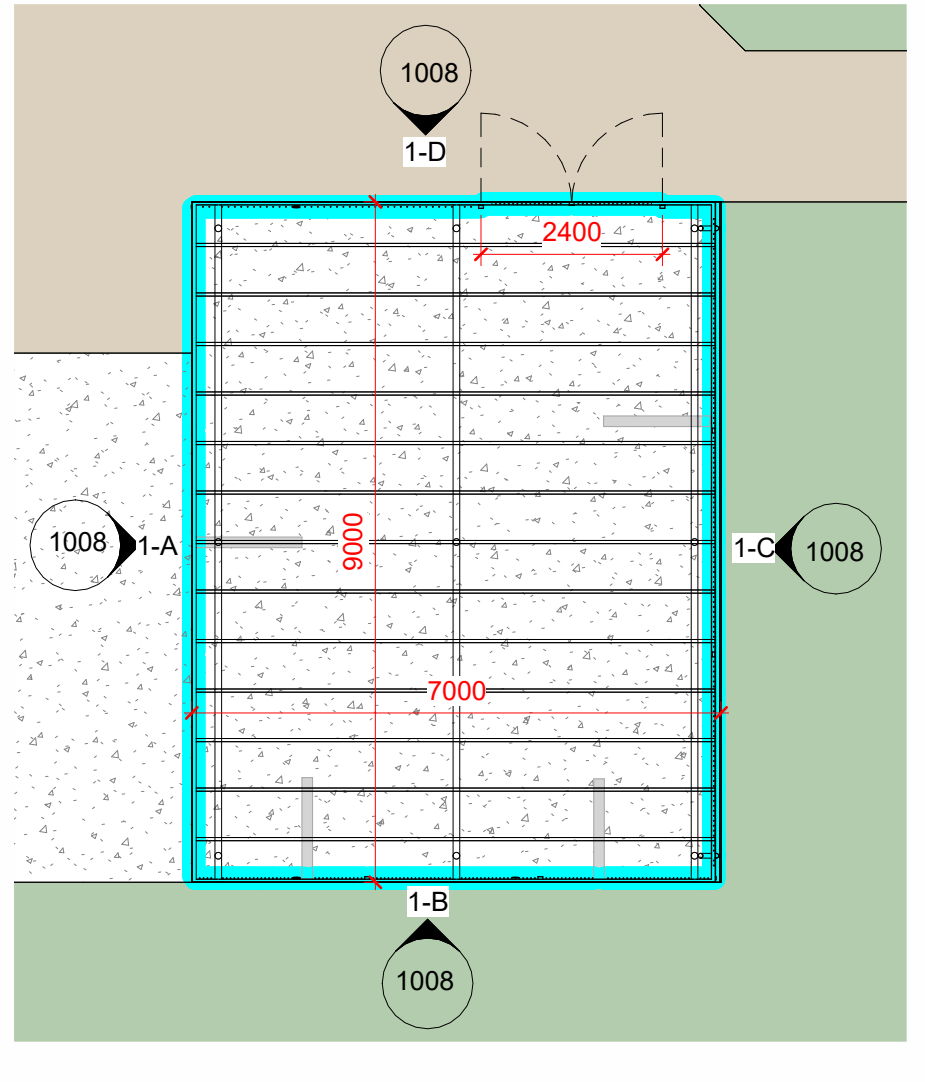
3D View 02 - Front Entrance Area



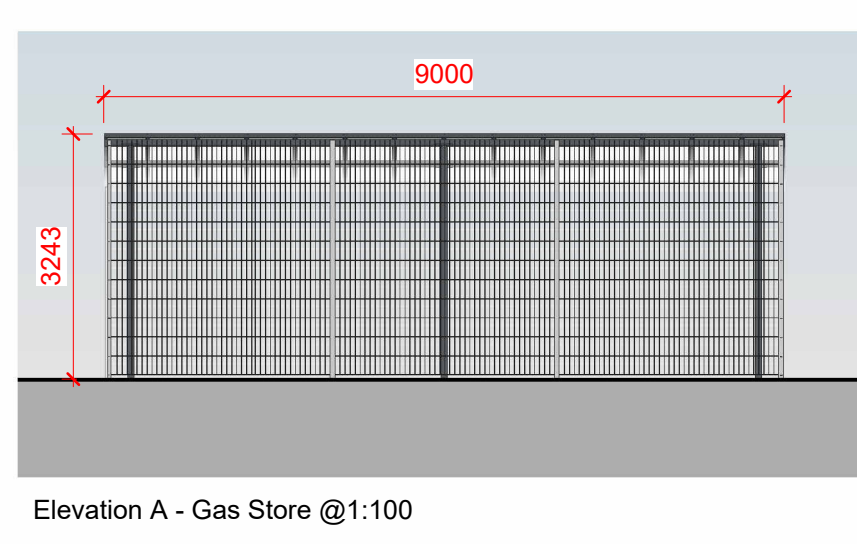
3D View 01 - Bin Store & Chemical Waste Store Area



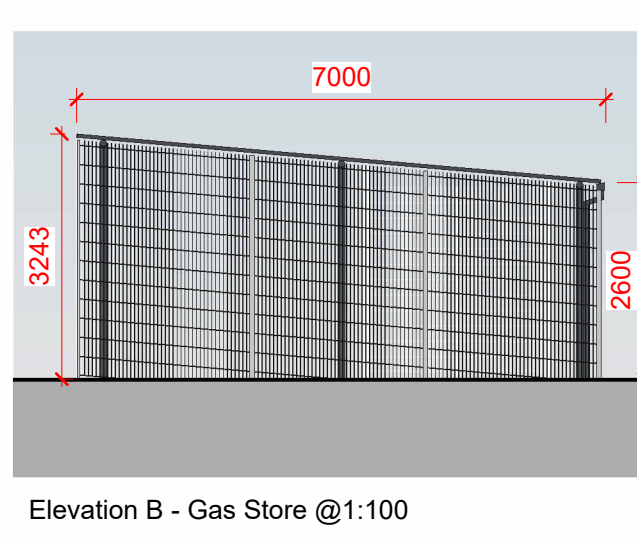
3D View 01 - Substation & Bin Store



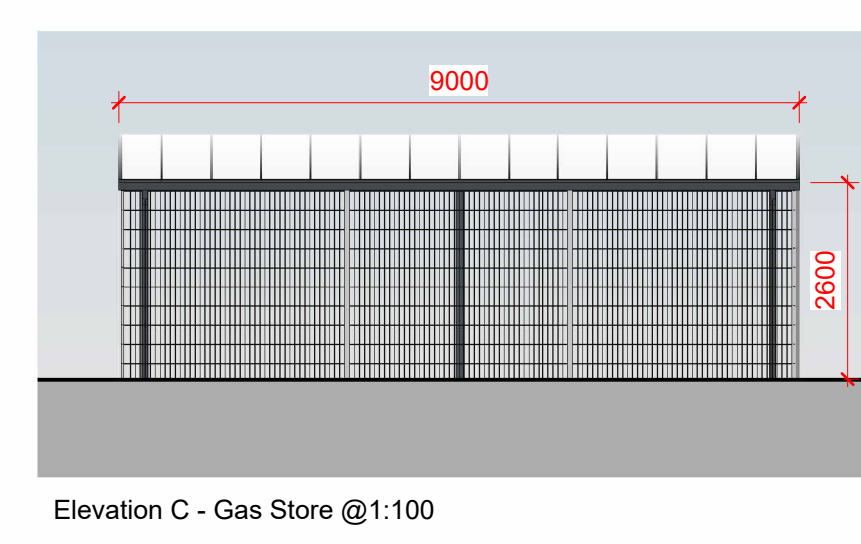
Callout Plan - Gas Store @ 1:100



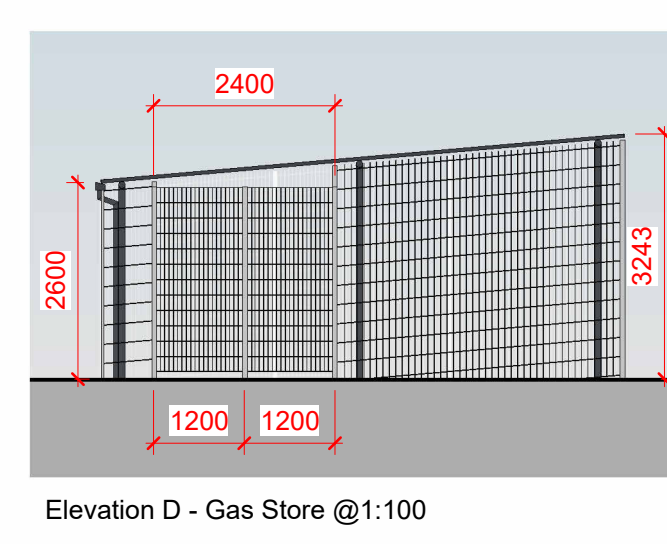
Elevation A - Gas Store @ 1:100



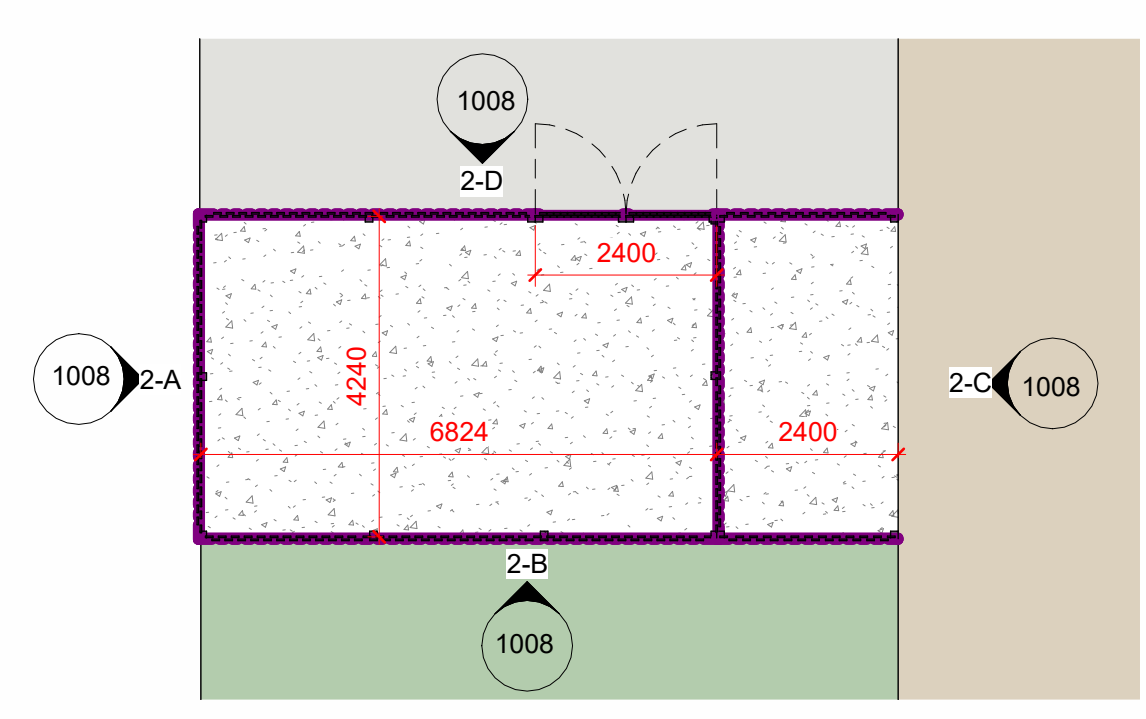
Elevation B - Gas Store @ 1:100



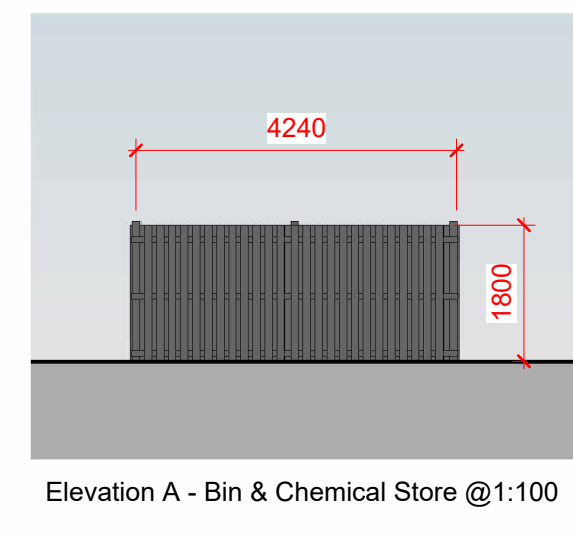
Elevation C - Gas Store @ 1:100



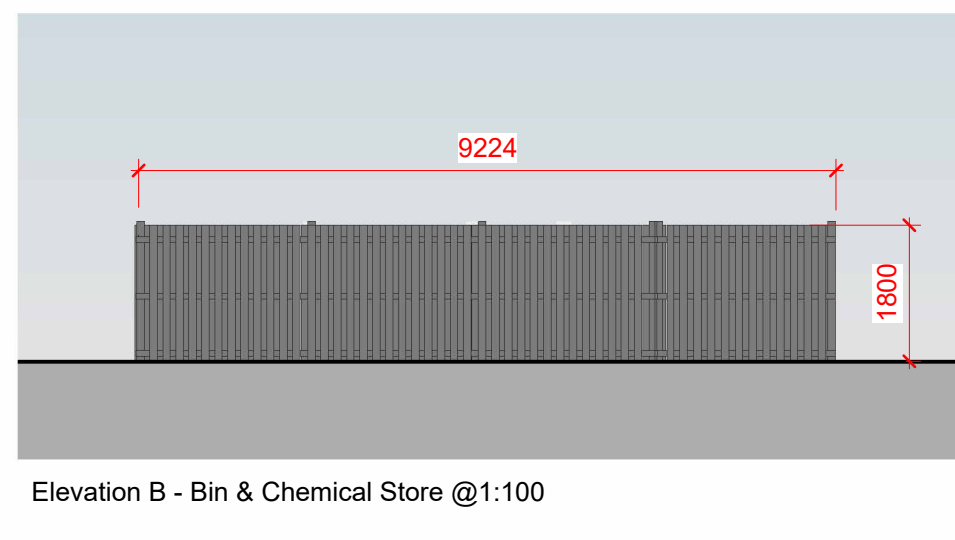
Elevation D - Gas Store @ 1:100



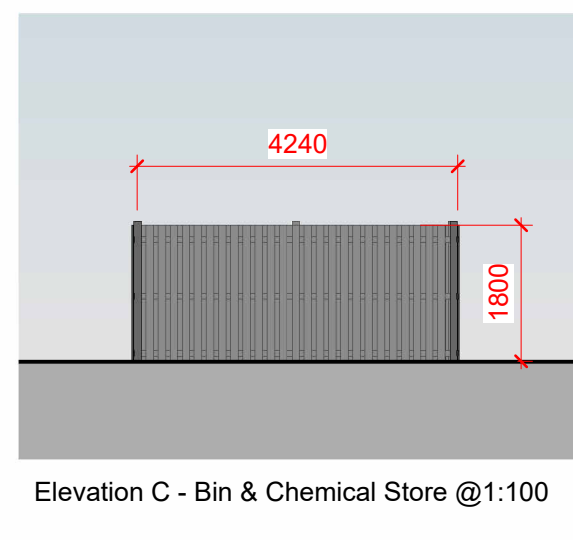
Callout Plan - Bin Store & Chemical Waste Store Area @ 1:100



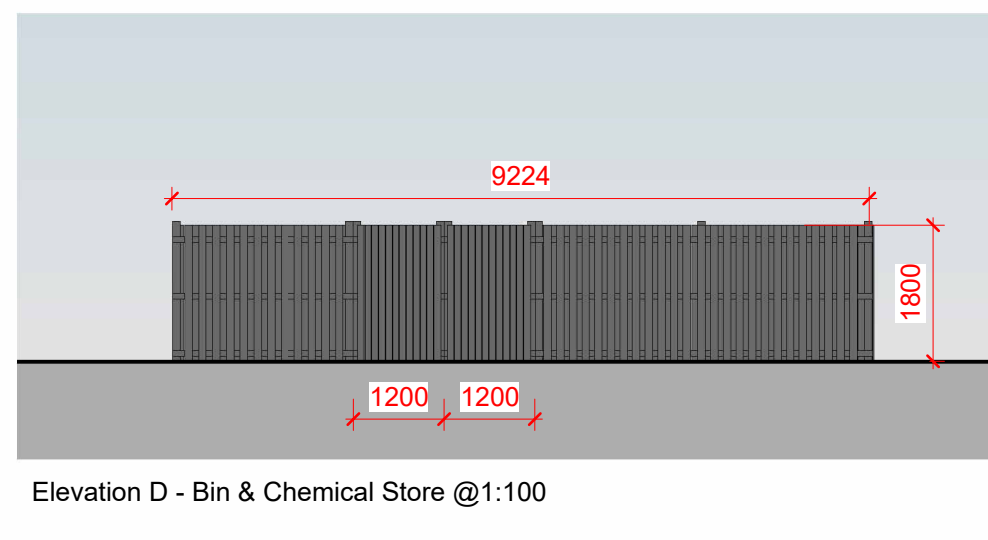
Elevation A - Bin & Chemical Store @ 1:100



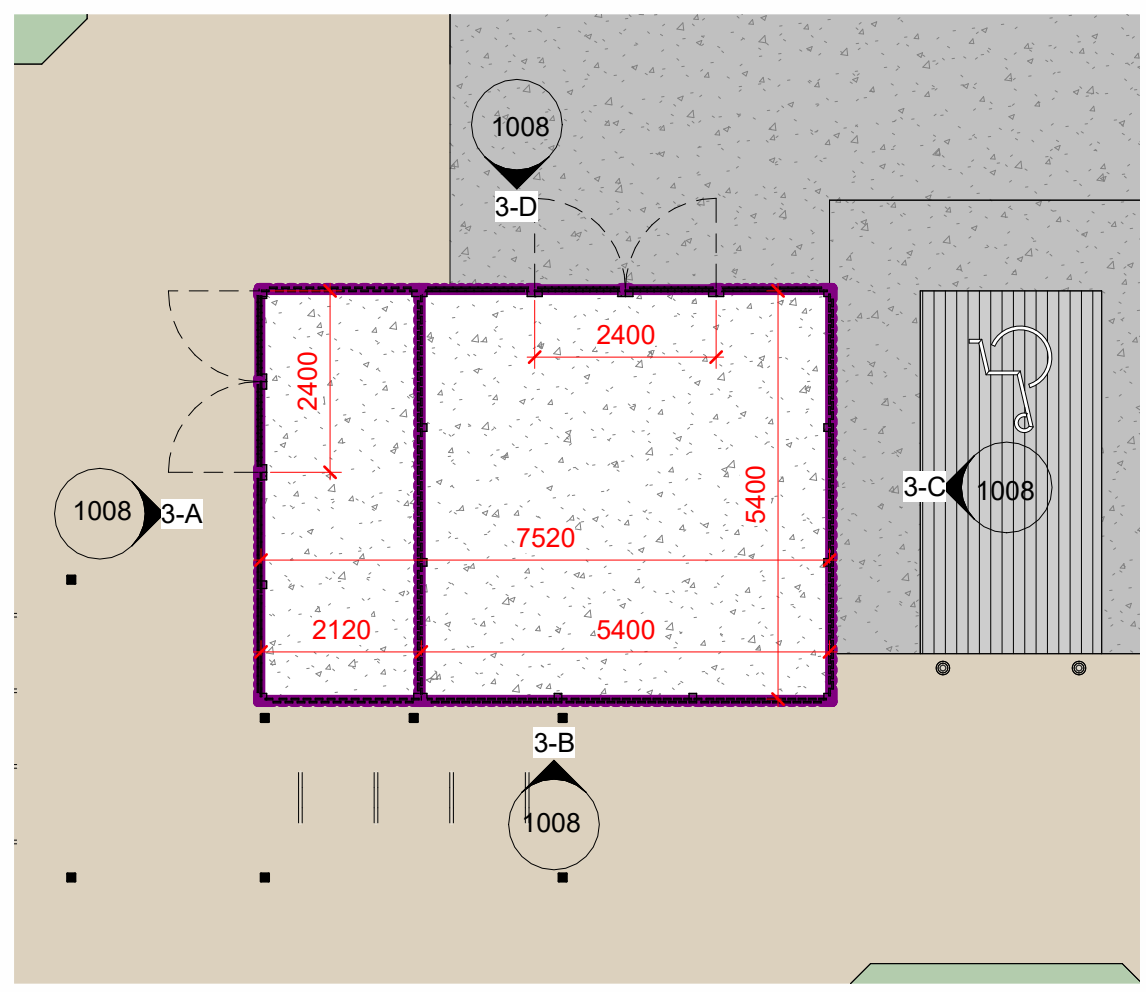
Elevation B - Bin & Chemical Store @ 1:100



Elevation C - Bin & Chemical Store @ 1:100



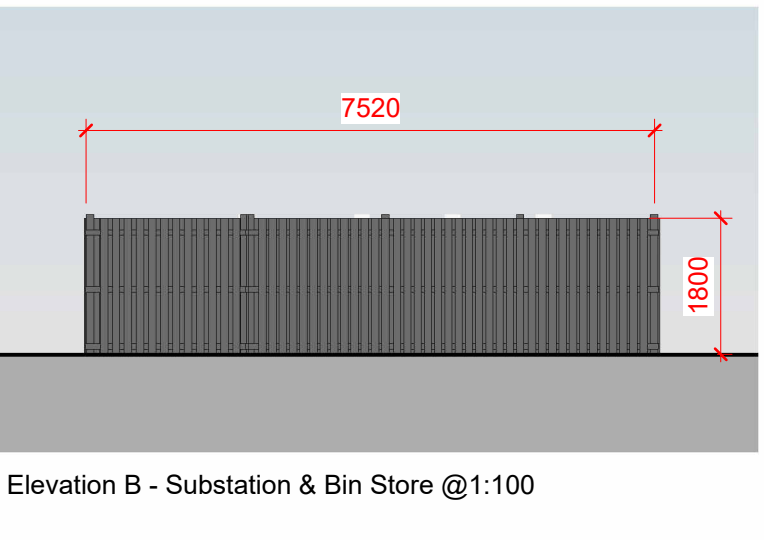
Elevation D - Bin & Chemical Store @ 1:100



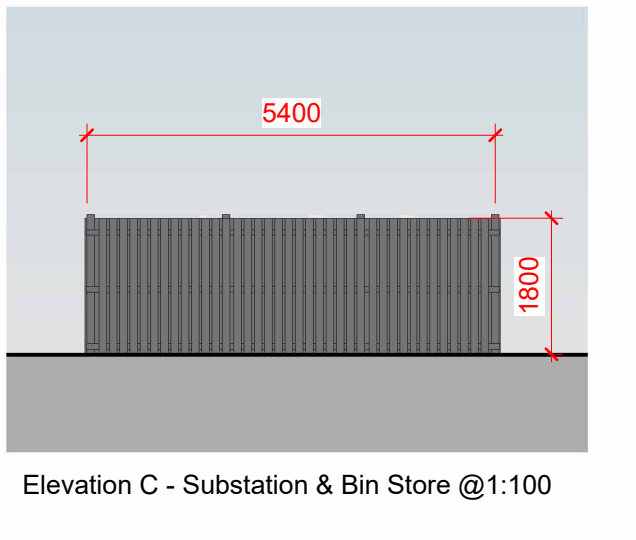
Callout Plan - Substation & Bin Store @ 1:100



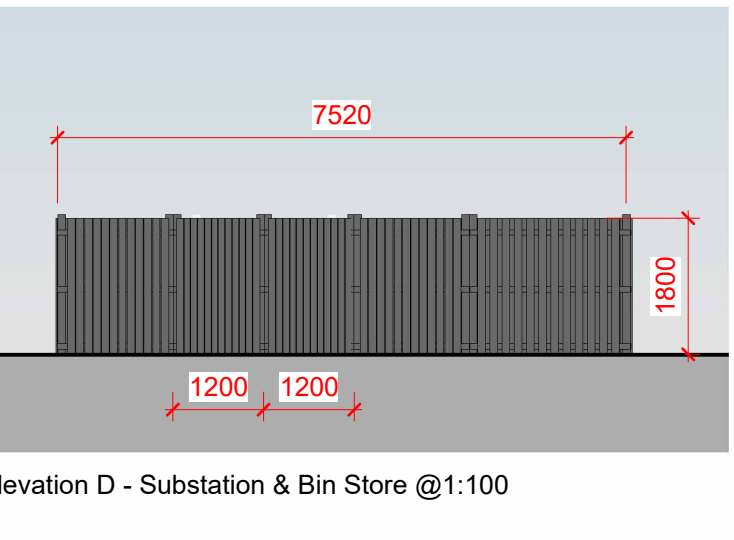
Elevation A - Substation & Bin Store @ 1:100



Elevation B - Substation & Bin Store @ 1:100



Elevation C - Substation & Bin Store @ 1:100



Elevation D - Substation & Bin Store @ 1:100