

Proposed Housing Development, Land at Cwmhydderech Court, Ebbw Vale NP23 7NU

"Planning Drawings" - 2P1B Block of Flats



Ground Floor Plan

1:100



First Floor Plan

1:100



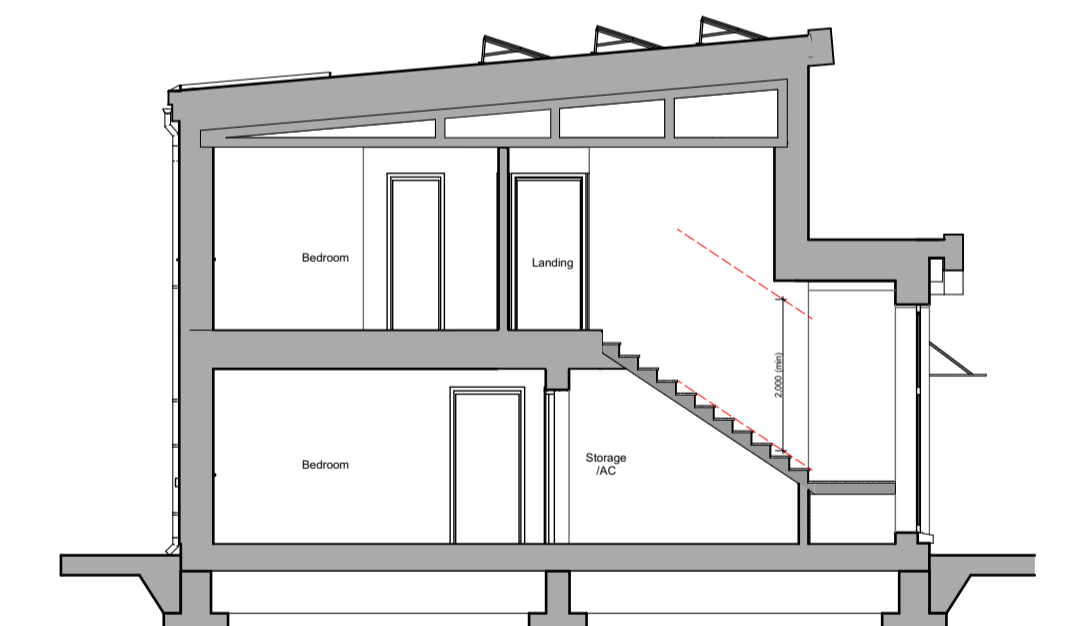
Front Elevation

1:100



Left-Side Elevation

1:100



Building Section

1:100



Rear Elevation

1:100



Right-Side Elevation

1:100

Floor Areas: Plots
 Total Gross Internal Ground Floor Areas = 63.001m² (678.137sqft)
 Total Gross Internal First Floor Areas = 54.204m² (583.447sqft)
 Total Gross Average Floor Area = 58.602m² (630.786sqft)

Storage Areas:
 (Storage areas highlighted in light green colour, excluding areas provided for Cylinder and MVHR)
[Ground Floor Flat - Required Storage Space = 1.5m²]
 Ground Floor Storage Area = 1.66m²
[First Floor Flat - Required Storage Space = 1.5m²]
 First Floor Storage Area = 3.69m²

Revision:	Date:	By:	Notes:



Client: Tai Calon Community Housing
 Scale: Noted
 Date: Nov '24
 Drawn: SE/RH
 Drawing Title: PLANNING DRAWINGS - 2P1B Block of Flats
 Job Title: Proposed Housing Development, Land at Cwmhydderech Court, Ebbw Vale NP23 7NU
R547-P-09