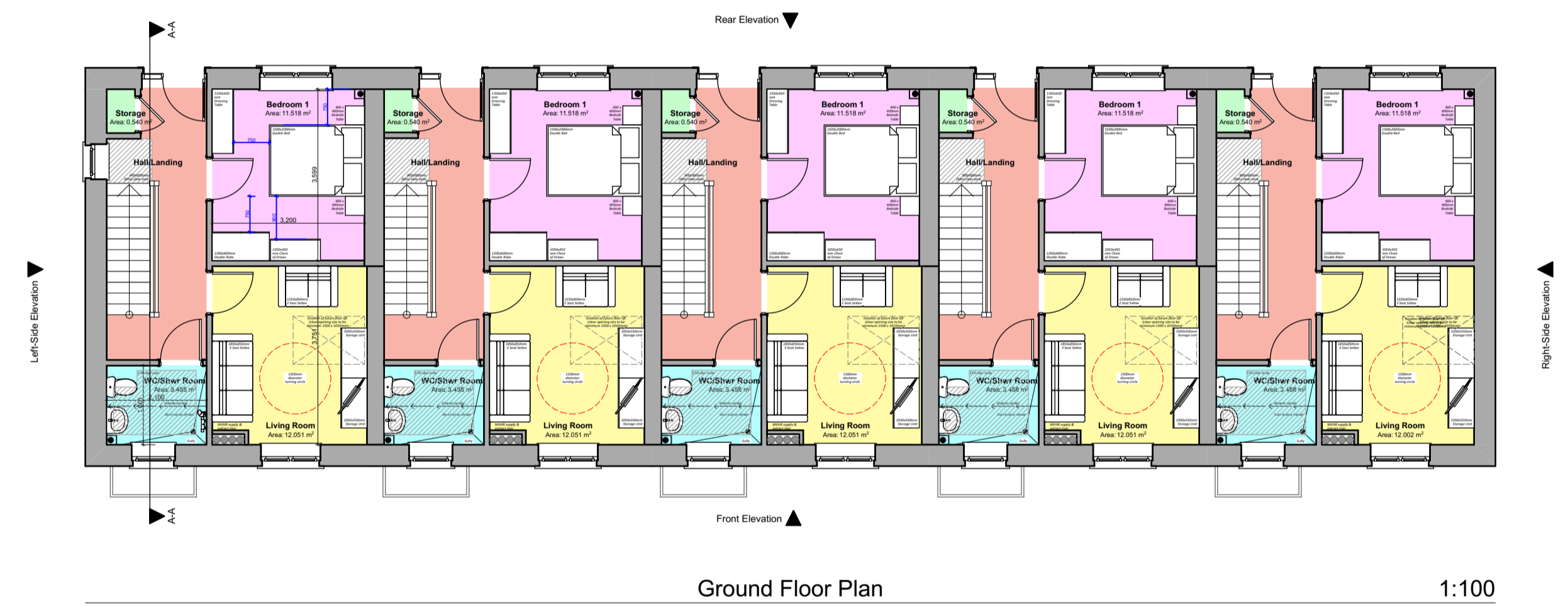
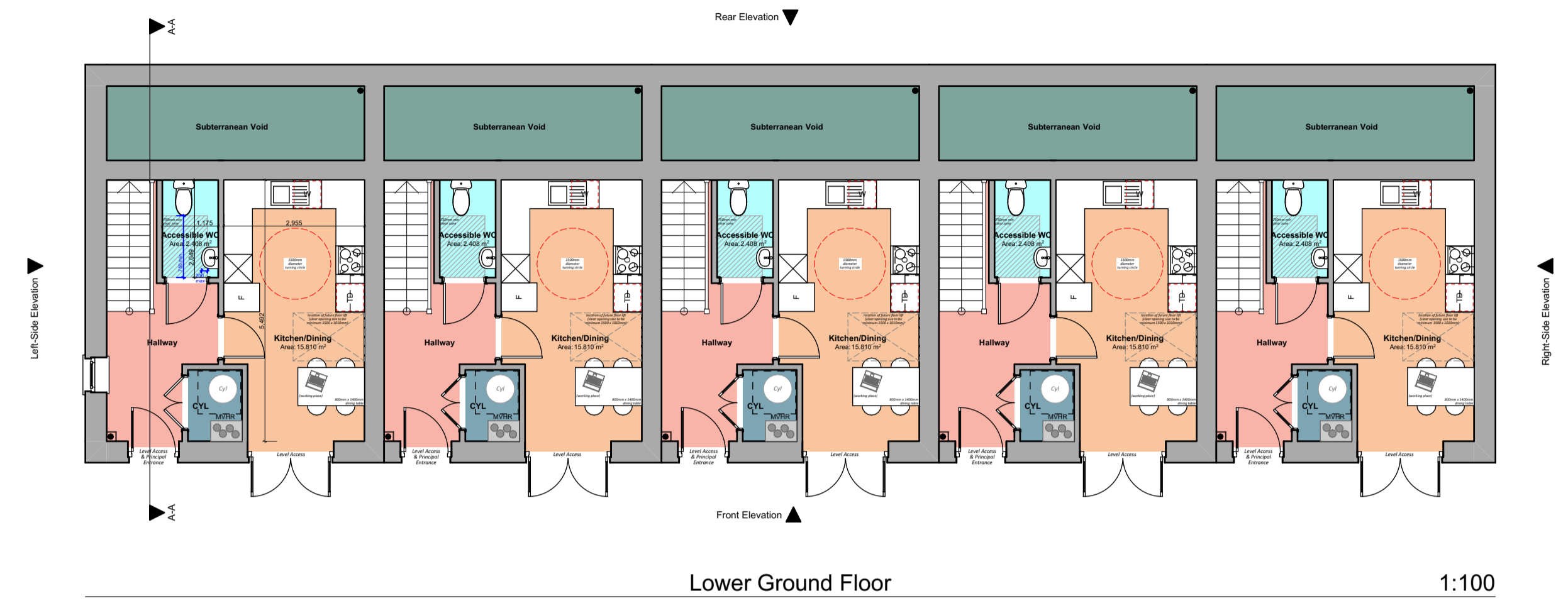


Proposed Housing Development, Land at Cwmrhydderch Court, Ebbw Vale NP23 7NU

"Planning Drawings" - 4P2B Terrace Houses



Floor Area: 4P2B
 Total Gross Internal Lower Ground Floor Area = 29.767m² (320.409sqft)
 Total Gross Internal Ground Floor Area = 40.488m² (435.809sqft)
 Total Gross Internal First Floor Area = 31.098m² (334.736sqft)
 Total Gross Internal Area = 101.353m² (1090.954sqft)

Storage Areas: 4P2B
 (Storage areas highlighted in light green colour, excluding areas provided for Cylinder and MVHR)
[Required Storage Space = 2.5m²]
 Ground Floor Storage Area = 0.549m²
 First Floor Storage Area = 2.287m²
 Total dwelling Storage Area = 2.83m²



Revision:	Date:	By:	Notes: