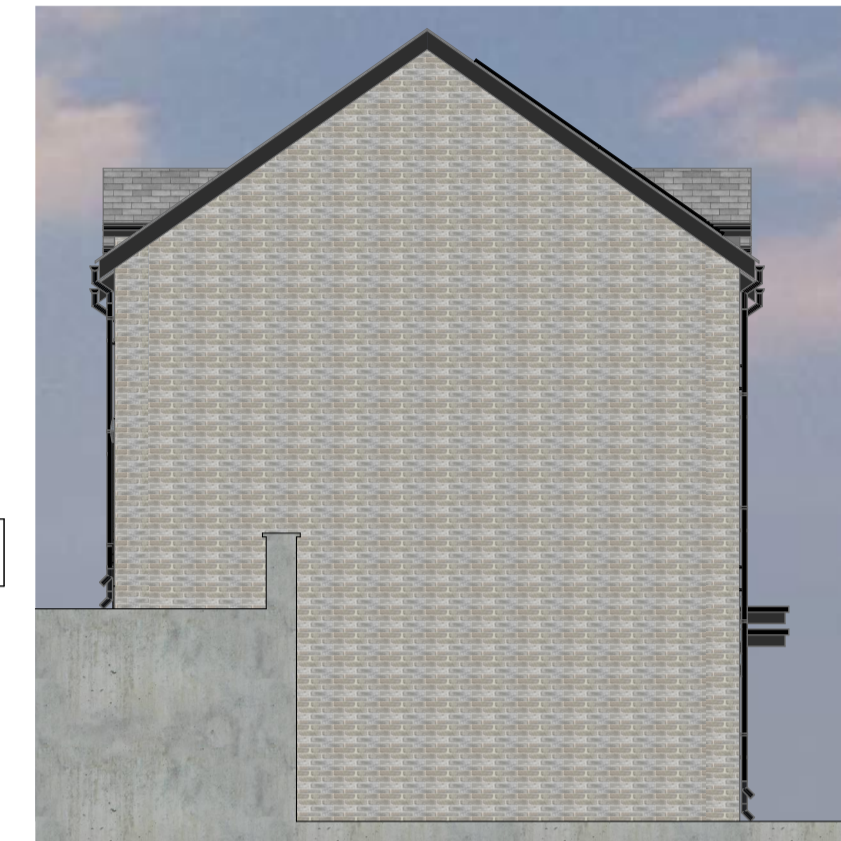


# Proposed Housing Development, Land at Cwmrhydderch Court, Ebbw Vale NP23 7NU

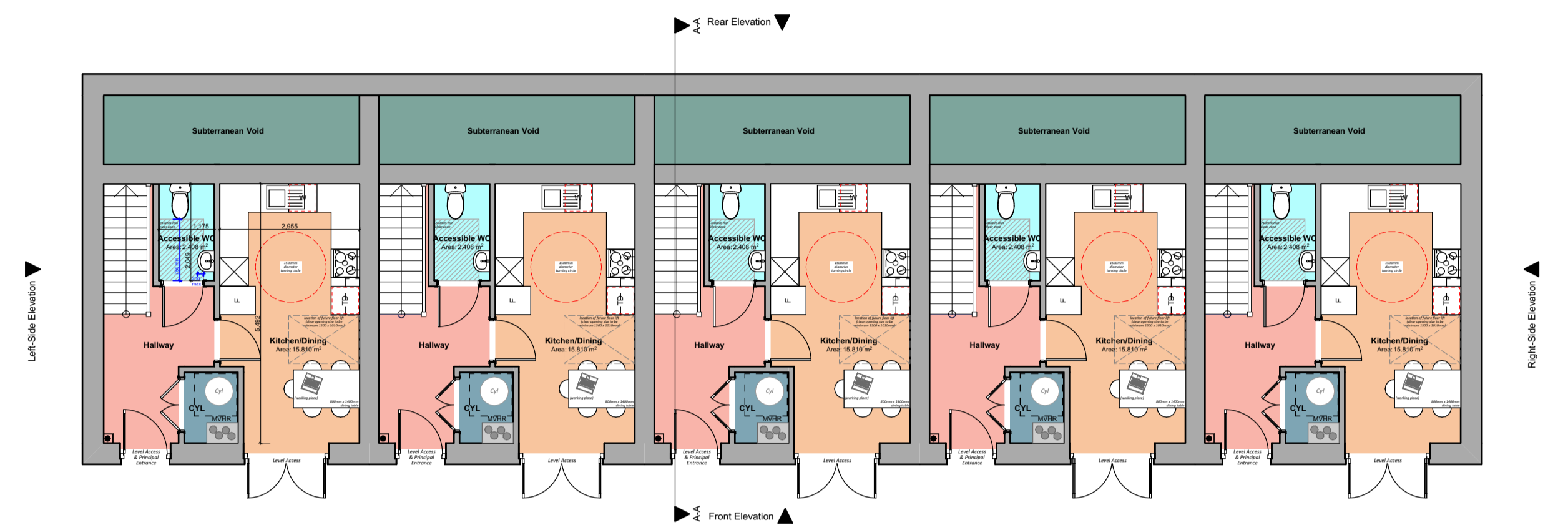
## "Planning Drawings" - 5P3B Terrace Houses



Front Elevation 1:100



Left-Side Elevation 1:100



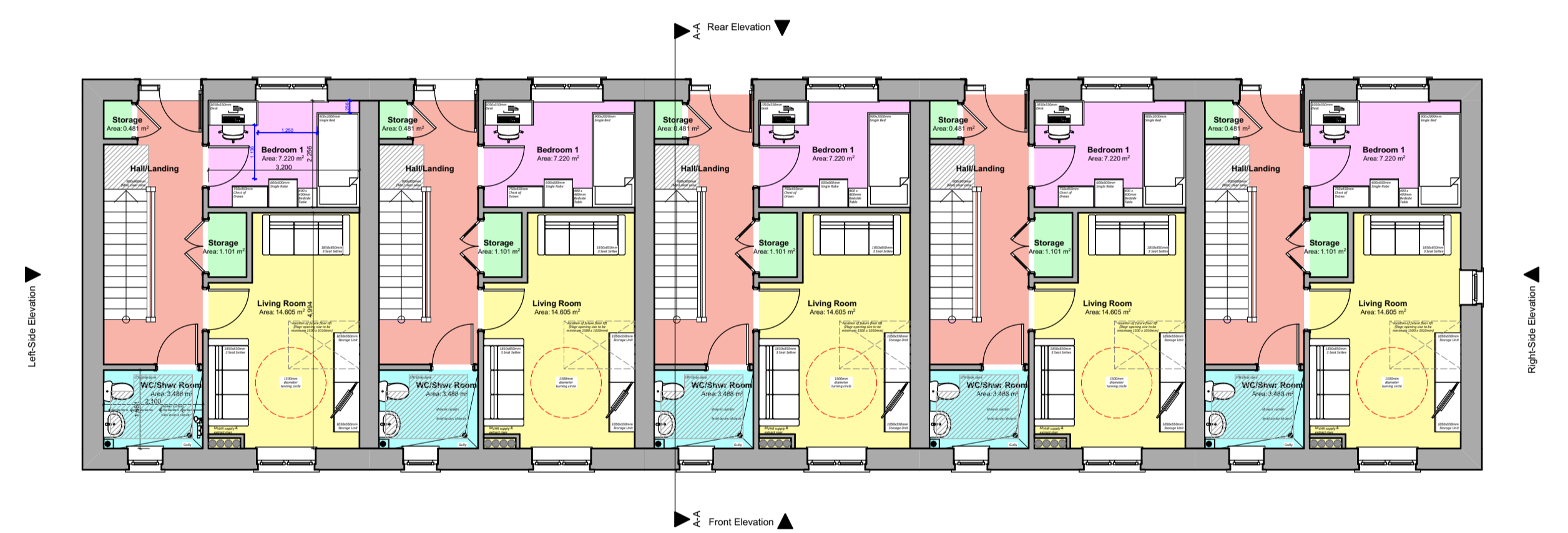
Lower Ground Floor 1:100



Rear Elevation 1:100



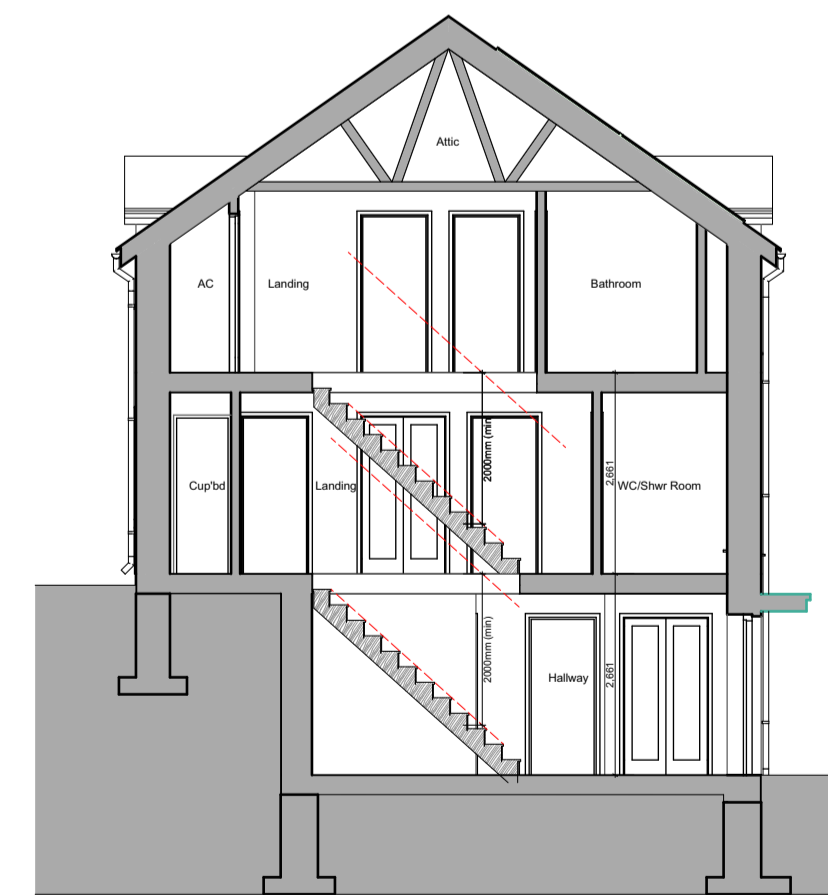
Right-Side Elevation 1:100



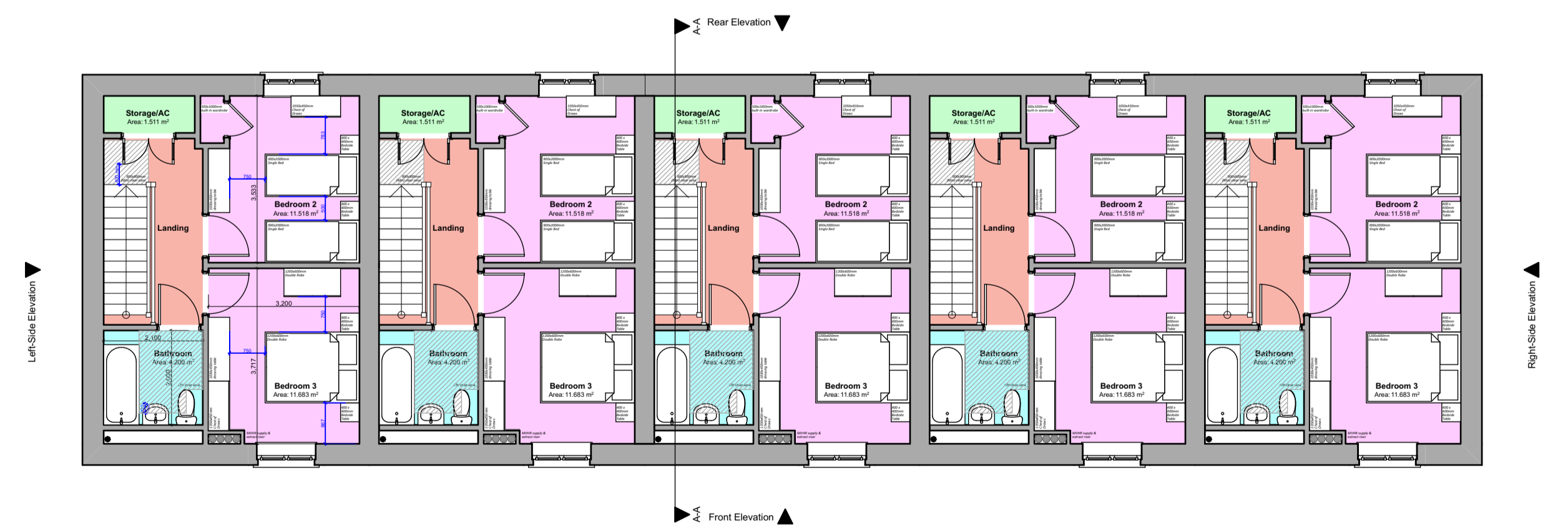
Ground Floor Plan 1:100

**Floor Area: 5P3B**  
 Total Gross Internal Lower Ground Floor Area = 29.767m<sup>2</sup> (320.409sqft)  
 Total Gross Internal Ground Floor Area = 39.946m<sup>2</sup> (429.975sqft)  
 Total Gross Internal First Floor Area = 39.946m<sup>2</sup> (429.975sqft)  
 Total Gross Internal Area = 109.659m<sup>2</sup> (1,180.359sqft)

**Storage Areas: 5P3B**  
 (Storage areas highlighted in light green colour, excluding areas provided for Cylinder and MVHR)  
**[Required Storage Space = 3.0m<sup>2</sup>]**  
 Ground Floor Storage Area = 1.582m<sup>2</sup>  
 First Floor Storage Area = 1.511m<sup>2</sup>  
 Total dwelling Storage Area = 3.093m<sup>2</sup>



A-A Building Section 1:100



First Floor Plan 1:100

Revision:	Date:	By:	Notes: