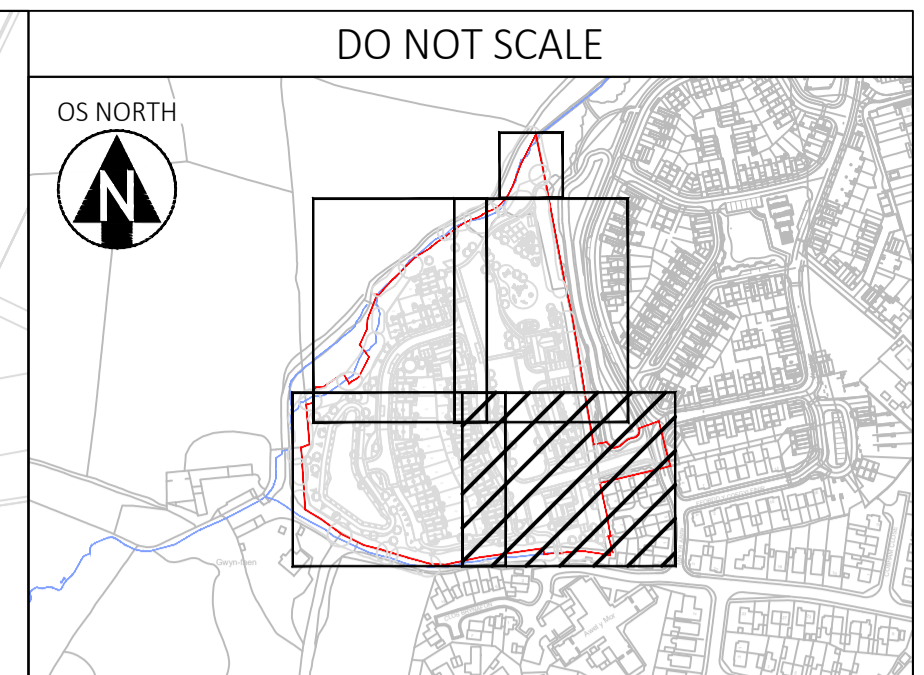
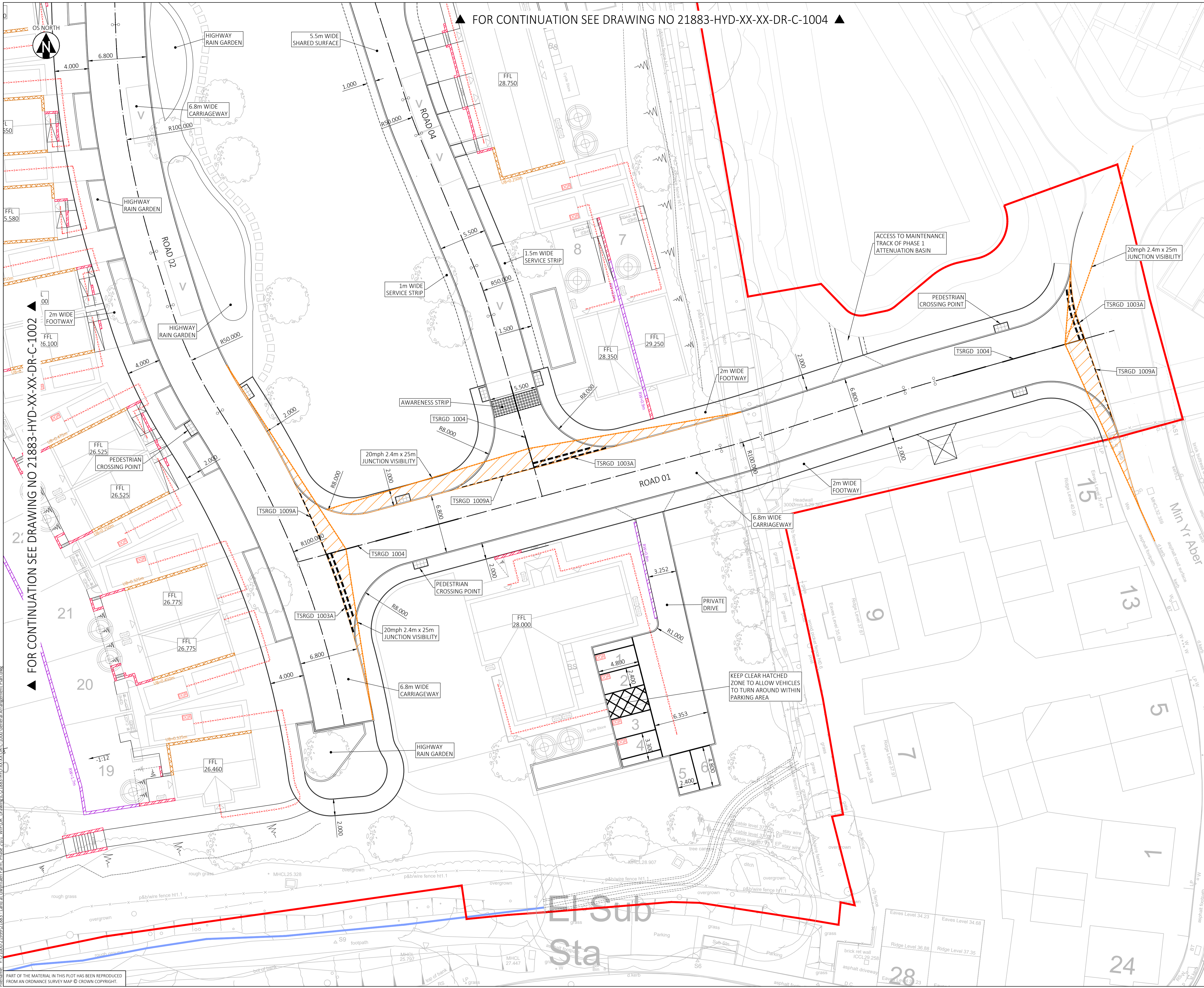


▲ FOR CONTINUATION SEE DRAWING NO 21883-HYD-XX-XX-DR-C-1004 ▲



**KEY**

- SITE BOUNDARY
- EXISTING WATERCOURSE
- ROAD CENTRELINE
- FORWARD VISIBILITY (2.4m x 25m)
- JUNCTION VISIBILITY (2.4m x 25m)
- RETAINING STRUCTURE
- RETAINING STRUCTURE (UNDER 600mm)
- UNDERBUILD
- 1.8 GRADIENT (MINUS DOWNHILL)
- FFL FINISHED FLOOR LEVEL
- DQR DQR PARKING BAY
- - - - - DQR ACCESS ROUTE

- NOTES:**
1. DRAWING TO BE READ IN CONJUNCTION WITH ALL OTHER RELEVANT PROJECT DRAWINGS AND SPECIFICATIONS
  2. ALL FIGURED LEVELS ARE IN METRES AND RELATED TO EXISTING SURVEY GRID & DATUM UNLESS NOTED OTHERWISE
  3. ALL FIGURED DIMENSIONS ARE IN METRES UNLESS NOTED OTHERWISE. DIMENSIONS ARE NOT TO BE SCALED.
  4. APPROXIMATE MIDDLE OF SITE INFORMATION
    - 4.1. GRID REFERENCE: SS 57783 99330
    - 4.2. X (EASTING) 257783, Y (NORTHING) 199330
    - 4.3. What3Words: pass.clever.decanter

**REVISIONS**

Rev	First Issue	18/09/24	AS	ML   ML
	Revision Notes	Date	Drawn By	Checked   Approved

**Hydrock**  
now  
**Stantec**

Third Floor, Wharton Place  
13 Wharton Street  
Cardiff  
CF10 1GS  
t: +44(0)2920 023665  
e: cardiff@hydrock.com

CLIENT  
**POBL HOMES AND COMMUNITIES**

PROJECT  
**RESIDENTIAL DEVELOPMENT AT GWYNFAEN (PHASE 2)**

TITLE  
**GENERAL ARRANGEMENT PLAN SHEET 1**

HYDROCK PROJECT NO. <b>C-21883</b>	SCALE @ A1 <b>1:200</b>	STATUS DESCRIPTION <b>SUITABLE FOR INFORMATION</b>	STATUS <b>S2</b>
DRAWING NO. <b>21883-HYD-XX-XX-DR-C-1001</b>		REVISION <b>P01</b>	

PART OF THE MATERIAL IN THIS PLOT HAS BEEN REPRODUCED FROM AN ORDNANCE SURVEY MAP © CROWN COPYRIGHT.