



DO NOT SCALE

- SAB ADOPTED SURFACE WATER DRAINAGE**
1. THE SURFACE WATER DRAINAGE IS SUBJECT TO APPROVAL BY THE SAB.
  2. THE SPECIFICATION IN ALL RESPECTS SHALL BE IN ACCORDANCE WITH THE CURRENT SPECIFICATION AND CONSTRUCTION PUBLICATION IN FORCE IN THE COUNTY AT THE TIME OF CONSTRUCTION.
  3. ALL PIPEWORK TO BE 225mm @ 1:150 MIN FALL UNLESS STATED OTHERWISE.
- PRIVATE FOUL AND SURFACE WATER DRAINAGE**
1. ALL PRIVATE DRAINAGE TO COMPLY WITH CURRENT BUILDING REGULATIONS, BS EN-752 DRAIN AND SEWER SYSTEMS OUTSIDE BUILDINGS AND OTHER RELEVANT BRITISH STANDARDS AND CODES OF PRACTICES.
  2. THRESHOLD DRAINAGE TO ARCHITECT'S SPECIFICATION.
  3. ALL SVP, SS AND RWP POSITIONS SHOWN ARE APPROXIMATE ONLY. FOR SETTING OUT OF SVP'S, SS AND RWP'S REFER TO ARCHITECT'S DETAILED CONSTRUCTION DRAWINGS. ANY DISCREPANCIES TO BE REPORTED TO THE ENGINEER PRIOR TO CONSTRUCTION.
  4. ALL PRIVATE SWS DRAINS TO BE Ø150mm PLASTIC PIPEWORK, UNLESS STATED OTHERWISE, LAID AT A MINIMUM FALL OF 1 IN 100. ALL LINEAR DRAIN OUTLETS TO BE Ø100mm, UNLESS STATED OTHERWISE, LAID AT MINIMUM FALL OF 1 IN 100 TO MAXIMUM FALL OF 1 IN 10.
  5. ALL PRIVATE FWS DRAINS TO BE Ø100mm PLASTIC PIPEWORK, UNLESS STATED OTHERWISE, LAID AT A MINIMUM SLOPE OF 1 IN 40 UPSTREAM OF FIRST W.C. CONNECTION ON A RUN. AFTER CONNECTION OF 1ST W.C. TO BE LAID AT MINIMUM SLOPE OF 1 IN 80.

- NOTES:**
1. DRAWING TO BE READ IN CONJUNCTION WITH ALL OTHER RELEVANT PROJECT DRAWINGS AND SPECIFICATIONS.
  2. ALL FIGURED LEVELS ARE IN METRES AND RELATED TO EXISTING SURVEY GRID & DATUM UNLESS NOTED OTHERWISE.
  3. ALL FIGURED DIMENSIONS ARE IN METRES UNLESS NOTED OTHERWISE, DIMENSION ARE NOT TO BE SCALED.
  4. IT IS THE CONTRACTORS RESPONSIBILITY TO LOCATE EXISTING SERVICES ON SITE ACCURATELY.
  5. THE CONTRACTOR IS TO VERIFY THE LINE, LEVEL AND DIAMETER OF EXISTING SEWERS BEFORE COMMENCING DRAINAGE WORKS.
  6. DRAINAGE REQUIREMENTS FOR RETAINING STRUCTURES TO BE CONFIRMED BY STRUCTURAL ENGINEERS.
  7. ALL SEWERS TO BE LAID SOFFIT TO SOFFIT UNLESS OTHERWISE SHOWN.
  8. PIPEWORK TO HAVE BED AND SURROUND AS FOLLOWS:
    - UNDERNEATH DOMESTIC GARDENS AND PATHWAYS WITH NO POSSIBILITY OF VEHICLE ACCESS TO BE:-
      - COVER TO TOP OF PIPE > 0.35m - TYPE T
      - COVER TO TOP OF PIPE < 0.35m - TYPE Z (CONCRETE SURROUND) / REINFORCED COVER SLAB AS SPECIFIED
    - UNDERNEATH PRIVATE DRIVEWAYS, PARKING AREAS WITH RESTRICTIONS TO PREVENT ACCESS BY VEHICLES IN EXCESS OF 7.5 TONNES AND PATHWAYS ADJACENT TO VEHICLE ACCESS TO BE:-
      - COVER TO TOP OF PIPE > 0.9m - TYPE T
      - COVER TO TOP OF PIPE < 0.9m - TYPE Z (CONCRETE SURROUND) REINFORCED COVER SLAB AS SPECIFIED
    - UNDERNEATH OTHER HIGHWAYS AND PARKING AREAS WITH RESTRICTED ACCESS TO VEHICLES WITH A GROSS WEIGHT IN EXCESS OF 7.5 TONNES.
      - COVER TO TOP OF PIPE > 1.2m - TYPE T
      - COVER TO TOP OF PIPE < 1.2m - TYPE Z (CONCRETE SURROUND) REINFORCED COVER SLAB AS SPECIFIED
  9. ALL PIPES AND FITTINGS FOR DIAMETER OF 100/110mm TO BE EITHER:
    - FLOLINE EN1401 DRAINAGE SYSTEM
    - HEPWORTH PLASTIDRAIN SYSTEM
    - MARLEY SOLID WALL UNDERGROUND DRAINAGE PIPE SYSTEM
    - OSMADRAIN BUILDING DRAINAGE SYSTEM
    - POLYPIPE EN1401-1 STANDARD UNDERGROUND DRAIN SYSTEM
    - OR SIMILAR APPROVED BY RELEVANT AUTHORITY AND/OR HYDROCK
  10. ALL PIPES AND FITTINGS FOR DIAMETERS OF 150mm - 300mm TO BE EITHER:
    - MARLEY TWINWALL SYSTEM
    - UPONOR ULTRA-RIB SYSTEM
    - WAVIN OSMA ULTRA-RIB SYSTEM
    - POLYPIPE CIVILS POLYSEWER TWINWALL SYSTEM
    - OR SIMILAR APPROVED BY RELEVANT AUTHORITY AND/OR HYDROCK
  11. USE OF DIFFERENT PIPE SUPPLIER OR SPECIFICATION MUST BE APPROVED BY STATUTORY UNDERTAKER - IF IN DOUBT ASK.

**KEY**

- SITE BOUNDARY
- EXISTING WATERCOURSE
- SURFACE WATER
- SURFACE WATER PERFORATED PIPE
- FOUL WATER
- FOUL WATER RISING MAIN
- EXISTING SURFACE WATER
- EXISTING FOUL WATER
- EXISTING COMBINED WATER
- SURFACE WATER ATTENUATION BASIN
- SURFACE WATER RAIN GARDEN
- SURFACE WATER PERMEABLE PAVING
- EASEMENT
- DITCH - LAND DRAIN
- EXISTING DCWW RESTRICTED EASEMENT
- EXISTING DRAINAGE - REMOVED / ABANDONED
- RETAINING STRUCTURE
- RETAINING STRUCTURE (UNDER 600mm)
- UNDERBUILD
- GRADIENT (MINUS DOWNHILL)
- FINISHED FLOOR LEVEL

- DCWW ADOPTED FOUL DRAINAGE**
1. THIS PROJECT HAS BEEN DESIGNED TO AND SHOULD BE CONSTRUCTED IN ACCORDANCE WITH SEWERS FOR ADOPTION 7TH EDITION STANDARDS. THE CONTRACTOR SHALL ENSURE THAT AN UP TO DATE COPY OF SEWERS FOR ADOPTION 7TH EDITION TOGETHER WITH ALL ITS CURRENT DCWW ADDENDUM DOCUMENTS ARE AVAILABLE ON SITE FOR COMPLIANCE.
  2. WHEN SEWERS ARE LOCATED WITHIN A PUBLIC HIGHWAY, THE OUTSIDE OF THE SEWER SHOULD BE IN THE VEHICLE CARRIAGEWAY AND BE AT LEAST 1m AWAY FROM THE KERBLINE. THE OUTSIDE OF MANHOLE CONSTRUCTIONS SHOULD BE AT LEAST 0.5m AWAY FROM THE KERBLINE.
  3. THE DEVELOPER MUST SELF-VET AND CERTIFY THAT THE DESIGN CRITERIA, MATERIAL STANDARDS AND WORKMANSHIP SPECIFICATIONS FOR THE PROPOSED POTENTIALLY ADOPTABLE SEWERS ARE IN ACCORDANCE WITH THOSE SET OUT IN "SEWERS FOR ADOPTION - A DESIGN AND CONSTRUCTION GUIDE FOR DEVELOPERS" 7TH EDITION AND THE REQUIREMENTS OF THE STATUTORY UNDERTAKER DCWW AND CONFIRM THE SAME IN WRITING TO THE ADOPTION AUTHORITY.
  4. DEPTH AND LOCATION OF FOUL DRAINAGE CONNECTION POINT TO BE CONFIRMED ON SITE PRIOR TO COMMENCEMENT OF WORKS.

**REVISIONS**

POI	First Issue	18/09/24	AS	ML   ML
Rev.	Revision Notes	Date	Drawn By	Checked   Approved

**Hydrock** Third Floor, Wharton Place  
13 Wharton Street  
Cardiff  
CF10 1GS  
t: +44(0)2920 023665  
e: cardiff@hydrock.com

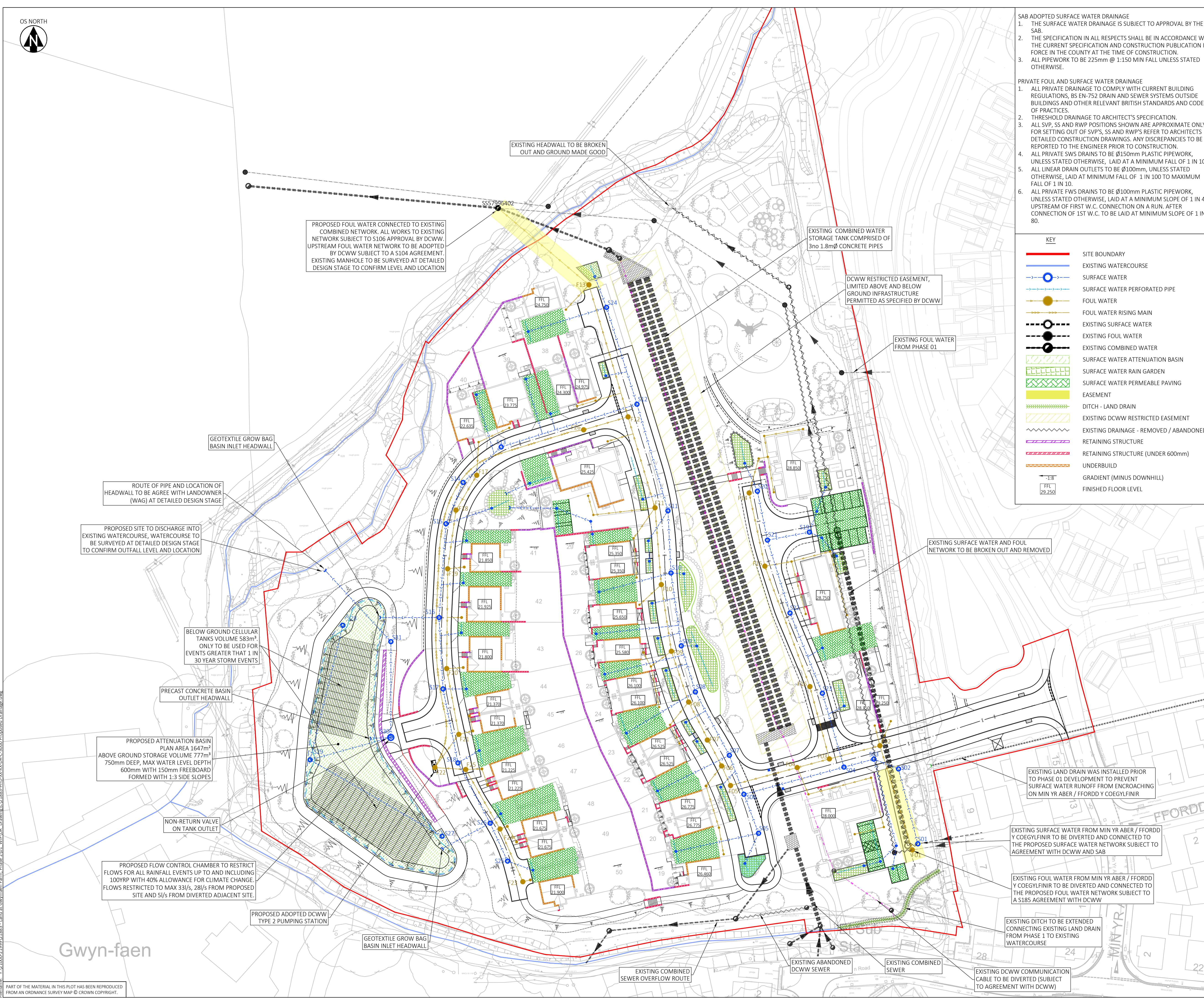
**Stantec**

CLIENT  
**POBL HOMES AND COMMUNITIES**

PROJECT  
**RESIDENTIAL DEVELOPMENT AT GWYNFAEN (PHASE 2)**

TITLE  
**PROPOSED DRAINAGE PLAN OVERALL SITE**

HYDROCK PROJECT NO. <b>C-21883</b>	SCALE @ A1 <b>1:500</b>
STATUS DESCRIPTION <b>SUITABLE FOR INFORMATION</b>	STATUS <b>S2</b>
DRAWING NO. <b>21883-HYD-XX-XX-DR-C-3000</b>	REVISION <b>P01</b>



PART OF THE MATERIAL IN THIS PLOT HAS BEEN REPRODUCED FROM AN ORDNANCE SURVEY MAP © CROWN COPYRIGHT.