

Land at Gwynfaen Farm, Phase 2

Transport Statement

For Pobl Group

Date *11 September 2024*

Doc ref *21883-HYD-XX-XX-RP-TP-4001*

Document control sheet

Issued by	Hydrock Consultants Limited Merchants House North Wapping Road Bristol BS1 4RW United Kingdom	T +44 (0)117 9459225 E bristolcentral@hydrock.com hydrock.com
Client	Pobl Group	
Project name	Land at Gwynfaen Farm, Phase 2	
Title	Transport Statement	
Doc ref	21883-HYD-XX-XX-RP-TP-4001	
Project number	21883	
Status	S4	
Date	11/09/2024	

Document production record		
Issue number	P02	Name
Prepared by		Alice Reid MA (Hons) GradCIHT
Checked by		Lizzie Clark BSc (Hons) MSc MCIHT
Approved by		Lizzie Clark BSc (Hons) MSc MCIHT

Document revision record			
Issue number	Status	Date	Revision details
P01	S3	06/09/2024	Suitable for review and comment
P01	S4	11/09/2024	For submission

Hydrock Consultants Limited has prepared this report in accordance with the instructions of the above-named client for their sole and specific use. Any third parties who may use the information contained herein do so at their own risk.

Contents

1.	Introduction	1
1.1	Overview	1
1.2	Purpose of report.....	1
1.3	Site planning history.....	1
1.4	Scope of report	1
2.	Site description and existing conditions	2
2.1	Site background.....	2
2.2	Local road network.....	3
2.3	Strategic Road Network (SRN).....	3
2.4	Highway safety	3
2.5	Car ownership.....	4
3.	Accessibility to the site by non-car modes of travel	6
3.1	Introduction.....	6
3.2	Existing local services and facilities.....	6
3.3	Walking.....	7
3.4	Cycling.....	8
3.5	Bus services.....	10
3.6	Rail services	10
3.7	Accessibility summary	11
4.	Development proposals.....	12
4.1	Overview	12
4.2	Proposed access strategy.....	13
4.3	Internal layout.....	13
4.4	Parking strategy.....	13
5.	Trip generation.....	16
5.2	Trip generation.....	16
6.	Summary & conclusions.....	17
6.1	Summary.....	17
6.2	Conclusions.....	17

Tables

Table 3.1: Local facilities in close proximity.....	7
Table 3.2: Bus service	10
Table 3.3: Train services.....	11
Table 4.1: House type numbers.....	12
Table 4.2 Car Parking Maximum Requirements.....	14

Table 4.3 Cycle Parking Minimum Standards.....	14
Table 5.1: Proposed mixed private/affordable trip rates and trip generation.....	16

Figures

Figure 2.1: Site location	2
Figure 2.2: Extent of Highway Collision Data Review	4
Figure 3.1: PROWs in the vicinity of the site.....	8
Figure 3.2: Cycle routes in the vicinity of the site.....	9
Figure 3.3: Swansea Bay cycle routes.....	10

Appendices

Appendix A	Bus Services
Appendix B	Site Layout
Appendix C	Visibility Splay
Appendix D	Swept Path Analysis
Appendix E	TRICS Output

1. Introduction

1.1 Overview

1.1.1 Hydrock Consultants Ltd has prepared this Transport Statement (TS) on behalf of Pobl Group in support of a planning application for the development of 50 residential dwellings located west of Gwynfaen farm in Penyrheol, Swansea.

1.1.2 The TS has been prepared in accordance with industry standard best practice. It sets out the transport matters relating to the development site (existing conditions) and provides details of the development proposals including a review of accessibility and connectivity, and an assessment of the traffic predicted to be generated by the development.

1.2 Purpose of report

1.2.1 The purpose of this TS is to set out details of the development proposals including parking and access arrangements, servicing, road safety, connectivity by sustainable modes, trip generation and provides analysis of the potential transport impacts of the proposals.

1.3 Site planning history

1.3.1 Planning permission was granted in 2019 for the development of 165 residential dwellings on the site known as Gwynfaen, Brynafon Road, Swansea (Phase 1). It is understood that this phase is now completed and fully operational, with a total of 144 homes being built.

1.3.2 Pobl Group are now looking to development Phase 2 to provide a total 50 dwellings. This will be a net increase of 29 dwellings compared to the consented scheme.

1.4 Scope of report

1.4.1 Following this introductory section, this TS is structured as follows:

- » Description of the location of the site as well as its current operations
- » A review of the existing conditions of the surrounding local highway network including access, parking, and highway safety
- » A review of walking and cycling routes, a review of public transport provision and the proximity of the site to public transport networks
- » Description of the development proposals, in particular demonstrating access by all modes, parking and servicing and delivery arrangements
- » Review of the multi-modal trip generation which is likely to be associated with the proposed development
- » Analysis of the impact of the proposals on the local highway network

2. Site description and existing conditions

2.1 Site background

2.1.1 The site is located in Penyrheol which is a residential area location in Gorseinon, approximately 9km north-west of Swansea city centre. The site is bounded by:

- » Open space to the north;
- » Phase 1 Brynafon Road residential development to the east;
- » Brynafon Road to the south; and,
- » The River Loughor is west of the site.

2.1.2 The site location is shown in Figure 2.1 below.

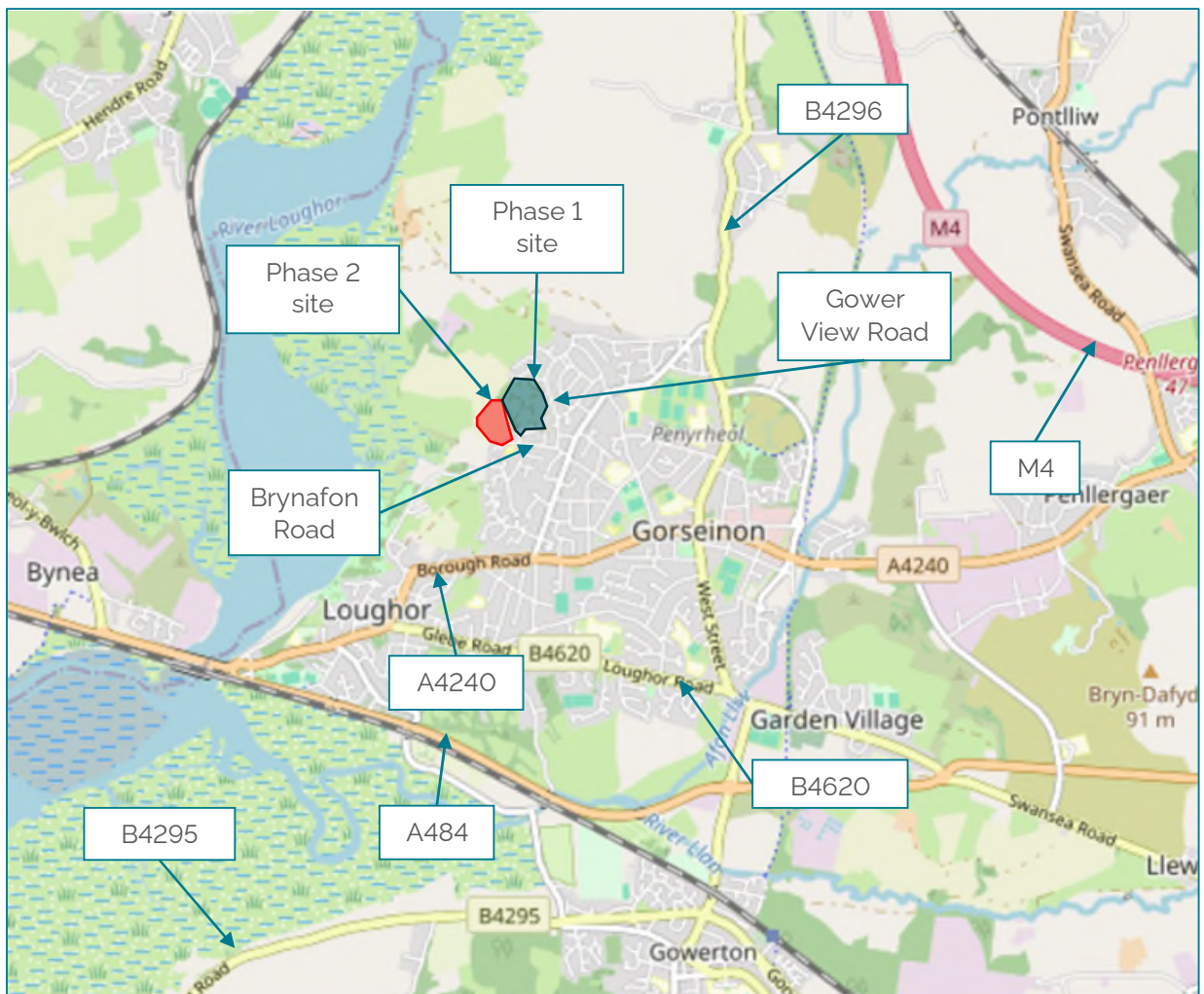


Figure 2.1: Site location

2.1.3 The site is connected by a number of strategic road networks, including:

- » The A4240 which runs west/east through Gorseinon joining the M4 at junction 47;
- » The A484 which provides connections to Llanelli to the west and the A483, Swansea City Centre to the east; and,
- » The B4296 which runs north/south direction and provides connections to Pontarddulais to the east;

2.2 Local road network

Brynafon Road

2.2.1 Brynafon Road runs in an east to west alignment, located directly south of the site. It is a single carriageway ranging between 5.0m and 7.0m in width within the vicinity of the site and is subject to a 30mph speed limit. Brynafon Road joins Clos Brynafon 80m west of the site access and forms a junction with Frampton Road to circa 290m to the east of the site access.

2.2.2 Footways and street lighting are provided on both sides of Brynafon Road until the junction with Pleasant Close. East of the junction of Pleasant Close, Brynafon Road only has footways on the south of the carriageway.

Gower View Road

2.2.3 Gower View Road is a residential road which runs in a north / south alignment. It joins Brynafon Road to the south and forms a junction with Llannant Road and Pen-Cefn-Arda Road to the north.

2.2.4 Gower View Road is approximately 7.0m in width and has footways in place on both sides of the road as well as street lighting.

Min Yr Aber

2.2.5 Min Yr Aber is an access road into the site off Brynafon Road.

Frampton Road

2.2.6 Frampton Road is located east of the site and is a single carriageway road and is approximately 7.0m in width. It has footways on both sides of the carriageway and street lighting is in place.

A4240

2.2.7 The A4240 runs in an east / west alignment through Gorseinon joining the A484 to the west and the A48 and Swansea Road to the east of the site.

A484

2.2.8 A484 is a single carriageway road which runs in an east / west alignment. To the west of Gorseinon it runs north to Carmarthen joining the A48 at the Pensarn roundabout and to the east of Gorseinon it joins the A483 north of Fforest-fach.

2.3 Strategic Road Network (SRN)

2.3.1 The M4 is located within close proximity of the site. The M4 serves as the main corridor connecting London to the east and Swansea to the west. The M4, junction 47 is approximately 5km from the site and is accessible via the A4240 eastbound.

2.4 Highway safety

2.4.1 The Personal Injury Collision data has been reviewed for the most recent five-year period between 2018 and 2022. The study area includes Brynafon Road and Frampton Road within the vicinity of the site as set out at Figure 2.2.

2.4.2 A review of the available PIA data indicates that there have been no collisions recorded within the study area during the most recent five-year period between 2018 and 2022.

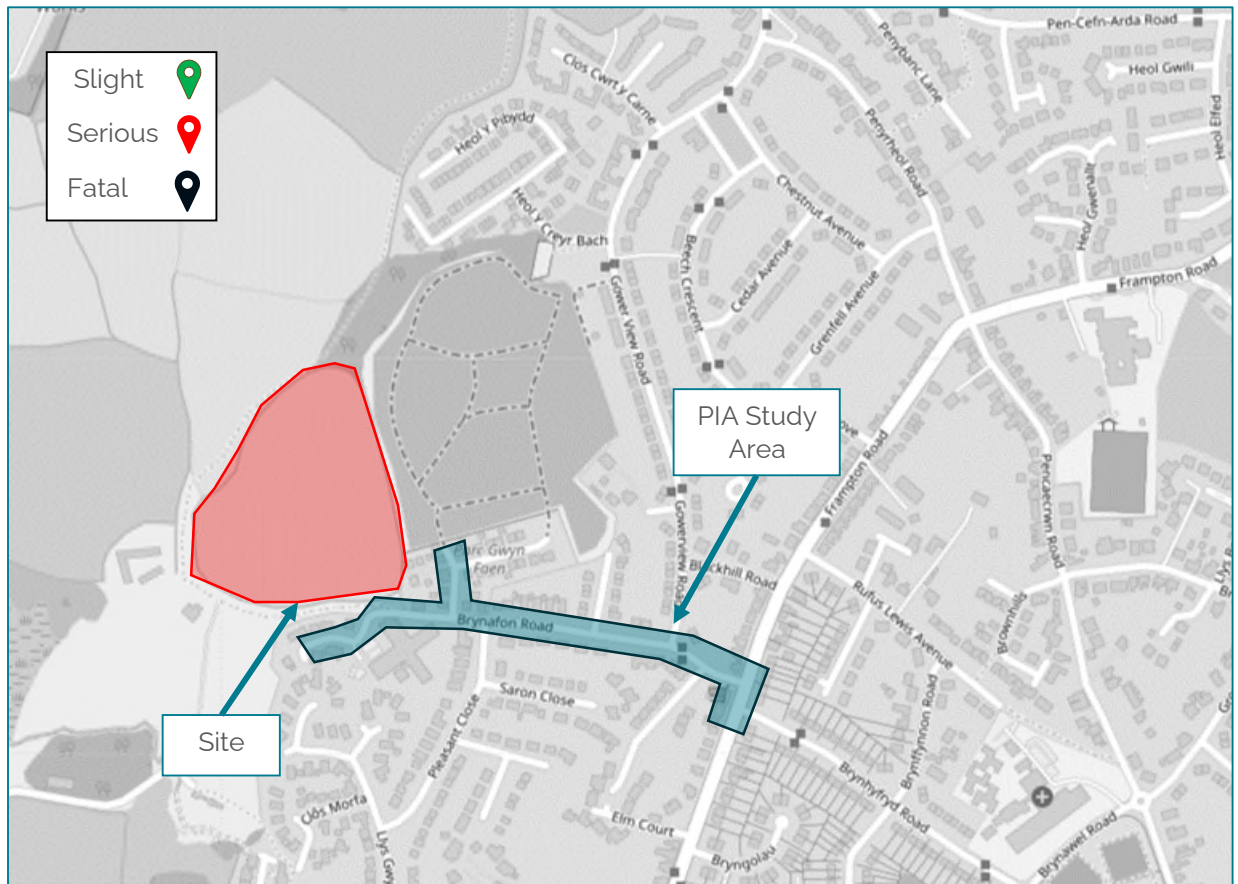


Figure 2.2: Extent of Highway Collision Data Review

2.4.3 The Personal Injury Collision data has been reviewed to establish whether the highway may be a casual factor in PIA events. It is unlikely that a single incident will lead to a conclusion that highway design resulted in the incident. Therefore, the review focuses on patterns and clusters of collisions.

2.4.4 Since there have been zero collisions within the vicinity of the site it does not indicate a specific pattern or issue with the geometry of the existing road layout and would not be exacerbated by the development proposals.

2.5 Car ownership

2.5.1 The car or van ownership has been calculated for Swansea 005 Middle Super Output Area (MSOA) from the 2021 Census data.

2.5.2 Within the area in which the site is located the existing car ownership of all residential dwellings is 1.30 vehicles per household. The car ownership based on tenure and the house type is outlined below:

- » social rented housing = 0.61 vehicles per house
- » whole house or bungalow = 1.22 vehicles per house
- » residential flats = 0.54 vehicles per house

- 2.5.3 It can be seen from the information presented about the proposed development is likely to have a car ownership of less than one vehicle per household for the flats and car less than two vehicles per household for the houses/bungalows.
- 2.5.4 Based on this level of car ownership, it is appropriate to provide two parking spaces for houses/bungalows and one space for flats within the development site.

3. Accessibility to the site by non-car modes of travel

3.1 Introduction

- 3.1.1 There are a number of publications which provide guidance for appropriate walking and cycling distances. These have been summarised as follows.
- 3.1.2 Planning for Walking (CIHT, 2015) states that: 'walking neighbourhoods are typically characterised as having a range of facilities within 10 minutes walking distance (around 800 metres). However, the propensity to walk or cycle is not only influenced by distance but also the quality of experience; people may be willing to walk or cycle further where their surroundings are more attractive, safe and stimulating'. In relation to shorter trips in particular, Planning for Walking (section 2.1) states that across Britain about '80% of journeys shorter than 1 mile are made wholly on foot'.
- 3.1.3 Planning for Cycling (CIHT, 2014) states that 'cycle use is more seasonable than other modes, with up to twice as many cyclists in the summer compared with winter. The majority of cycling trips are for short distances, with 80% being less than five miles and 40% being less than two miles'.
- 3.1.4 Local Transport Note (LTN) 1/20 states that 'two out of every three personal trips are less than five miles in length - an achievable distance to cycle for most people, with many shorter journeys also suitable for walking'.
- 3.1.5 Furthermore, the concept of 20-minute neighbourhoods aim to create places where key facilities can be reached within a 20-minute walk or cycle journey. This is equivalent to an approximate walking distance of 1.6km, based on 4.8km/h (Providing for Journeys on Foot, IHT) and a cycling distance of 5.3km, based on 16km/h (LTN 1/20).
- 3.1.6 As such, it is considered that suitable walking distances could be up to 2km and up to 8km cycle distance, which equates to around a 25-minute walk travelling at 3mi/h (4.8km/h) and a 30-minute cycle journey.

3.2 Existing local services and facilities

- 3.2.1 Table 3.1 sets out the distance from the site to a range of services and facilities (taken from the centre of the site). It can be seen that there are a range of facilities and amenities within the recommended 'walkable' distance as stated in *Manual for Streets*, and within the 2km distance that PPG13 indicates as having the potential for walking to replace short car trips.

Table 3.1: Local facilities in close proximity

Facilities		Distance from site (m)	Journey Time (Walking)*	Journey Time (Cycling)*
Public Transport	Penyrheol Post Office bus stop	290	4	1
Health	Gorseinon Hospital	745	9	3
Schools	Gorseinon PS	700	9	3
	Penyrheol PS	900	11	3
Retail/Leisure	Julian's Supermarket	330	4	1
	Chen's Chef Restaurant	250	3	1
	Sainsbury's	1800	22	7
	Gorseinon Town Centre	1800	22	7

* Based on walking speeds of 4.8km/h and cycling speeds of 16km/h

3.2.2 It can be seen from the table above that there are a number of facilities and amenities within walking/cycling distance of the development site.

3.3 Walking

3.3.1 The site is located to the west of Gorseinon town and has public rights of way (PROW/s) in the vicinity of the site.

3.3.2 Footways and street lighting are provided on both sides of Brynafon Road to the junction with Pleasant Close. East of the junction of Pleasant Close, Brynafon Road only has footways on the south of the carriageway. The footways lead to Frampton Road where there are amenities. Dropped kerbs and tactile paving are located at Frampton Road.

3.3.3 PROW (ref: GE18) is located to the west of the site with access from Brynafon Road. This provides connections to GE17 PROW to the north, which links to Pontarddulais.

3.3.4 A bridleway (ref: LR123) is located west of the site between Gwynfe Road and River Loughor.

3.3.5 The PROW network within the vicinity of the site is shown at Figure 3.1.

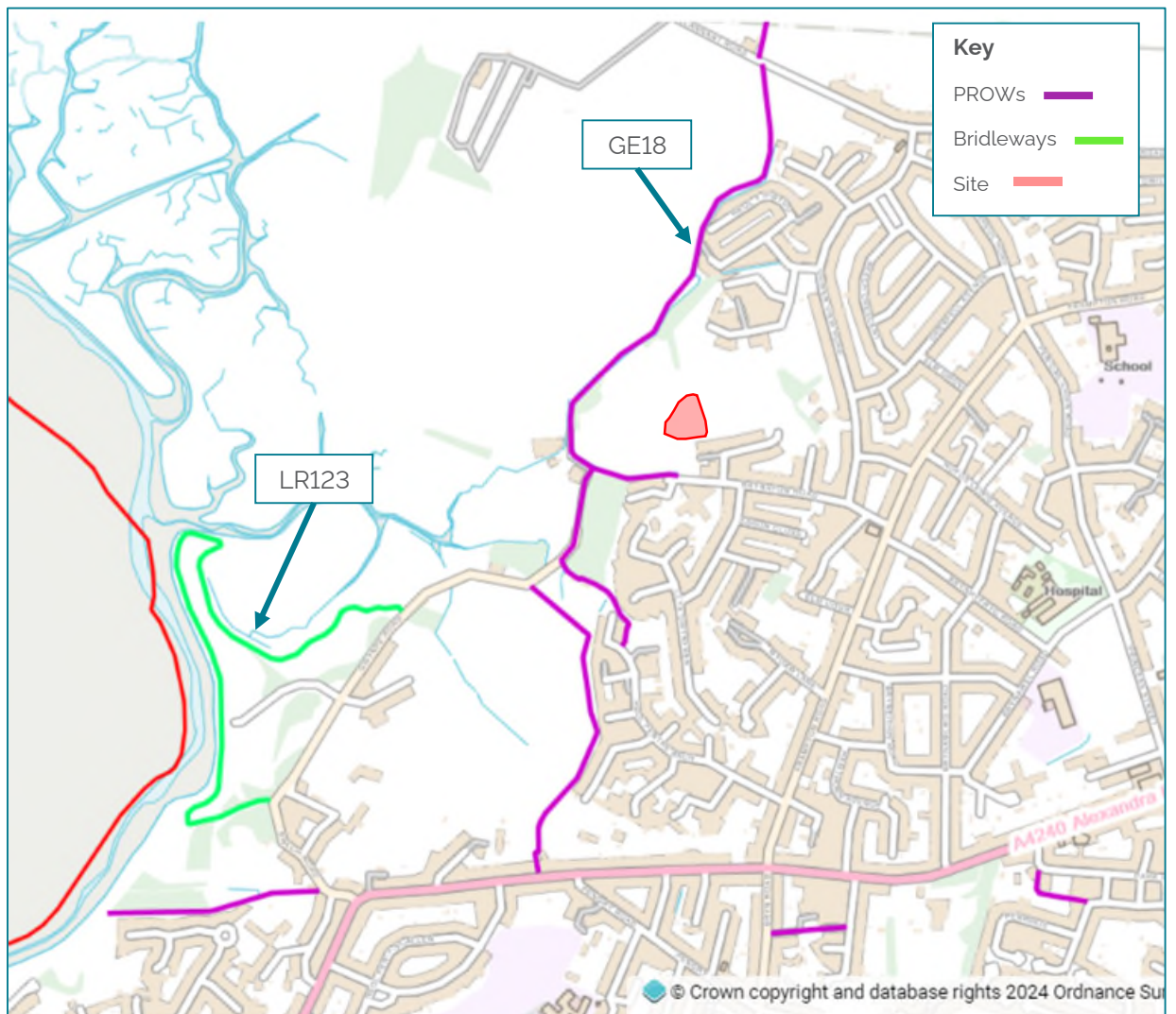


Figure 3.1: PROWs in the vicinity of the site

3.4 Cycling

3.4.1 There are numerous cycle options within the vicinity of the site as shown in Figure 3.2 and details are outlined below:

- » Clyne Line: Grovesend - Gorseinon. Length 1.9miles. Time 11mins.
- » Cross Valley: Gorseinon - Penllegaer. Length 1.44miles. Time 9 mins.
- » Central: Gowerton - Llanelli. Length 2.44 miles. Time 15 mins.
- » Cockleshell: Penclawdd - Gowerton. Length 2.15 miles. Time 13 mins.
- » City Central: Gowerton - Fforestfach. Length 2.67 miles. Time 16 mins.

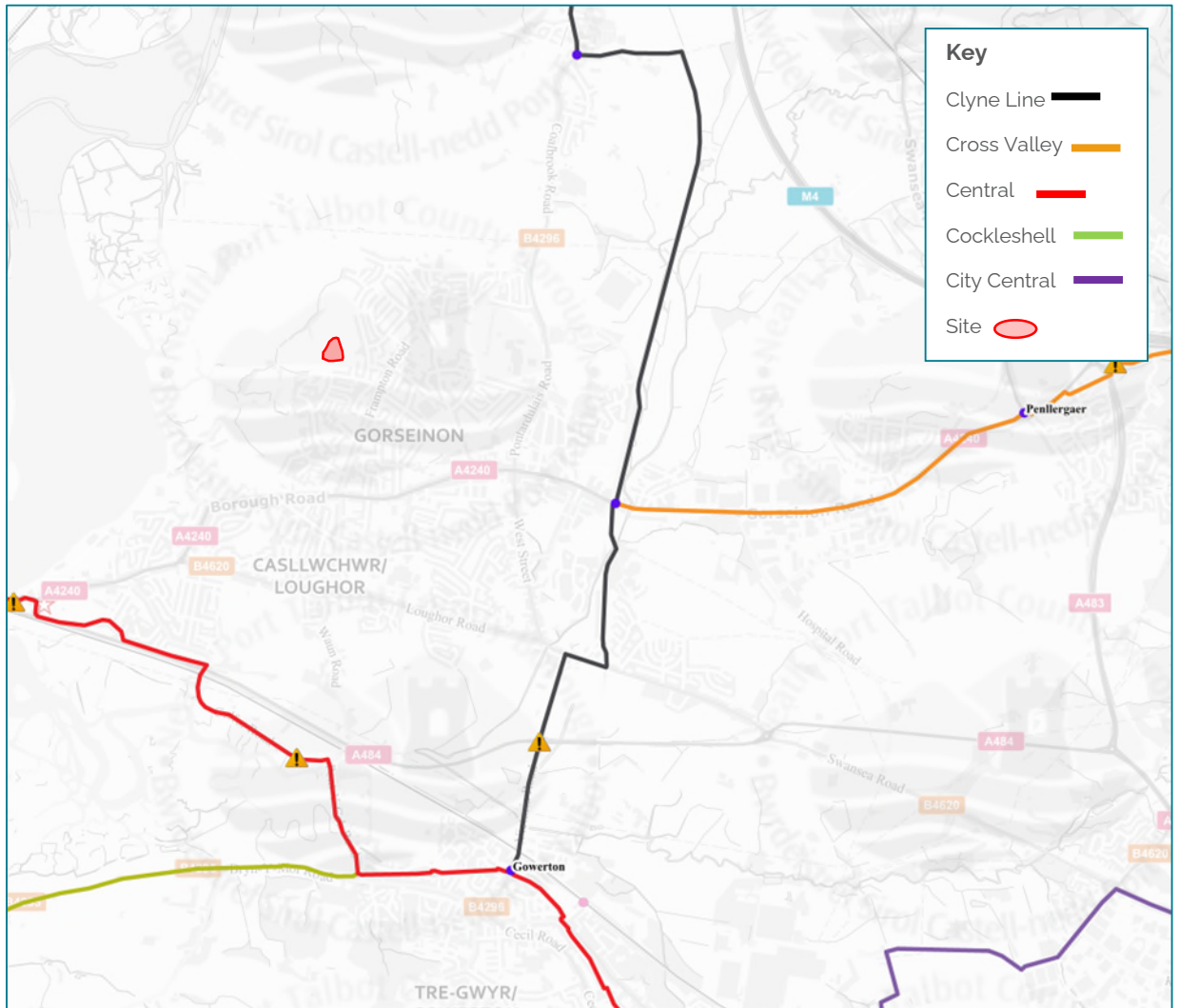


Figure 3.2: Cycle routes in the vicinity of the site

3.4.2 Figure 3.3 below shows the Swansea Bay cycle routes within the wider area.



Figure 3.3: Swansea Bay cycle routes

3.5 Bus services

- 3.5.1 The nearest bus stop to the site is 'Penyrheol Post Office', located approximately 290m to the east along Brynafon Road. This bus stop is serviced by Route 16 which provides connections to/from Swansea - Pontarddullais.
- 3.5.2 A brief summary of the service 16 is shown at Table 3.2 and more detailed bus timetable is provided at Appendix A.

Table 3.2: Bus service

Service	Bus Stop	Route	Average Frequency of Services (minutes)			Saturday	Sunday
			Mon-Fri				
			AM Peak	PM Peak	First / Last		
16	Penyrheol Post Office	Swansea - Pontarddullais	60	60	0636 / 2230	60	120

3.6 Rail services

- 3.6.1 Gowerton is the closest railway station to the site, located 4.5km south of the site. Gowerton railway station provides frequent services to a range of local destinations including Swansea, Cardiff Central, Carmarthen, Shrewsbury and Millford Haven. Gowerton has CCTV in place and provides 10 cycle storage spaces.

3.6.2 Car parking is available at Station Car Park located adjacent to the railway station, it has 23 spaces and is free.

3.6.3 A brief summary of the train services is shown at Table 3.3.

Table 3.3: Train services

Destination	Operator	Journey Time (mins)	Average Frequency (mins)	First Train	Last Train
Swansea	TfW	16	50	0622	2356
Cardiff Central	TfW	80	60	0622	2152
Shrewsbury	TfW	220	60	0559	1928
Carmarthen	TfW	40	45	0553	0021
Millford Haven	TfW	100	120	0706	2100

3.7 Accessibility summary

3.7.1 The site is situated within an edge of town location, with access to the range of facilities and amenities within a relatively close proximity of the proposed development. It is, therefore, considered that residents will be able to benefit from a range of available sustainable travel options.

3.7.2 The site is located within close proximity to a number of facilities including schools, shops and health, and located close to PROW and cycle networks, making walking and cycling appealing travel options.

3.7.3 Gowerton Railway Station is accessible by bike in 16 minutes., which provides regular connections to Swansea City Centre (journey time of 16 minutes). With the total travel time of the trip totalling 32 minutes, the site location demonstrates good travel time to a key commuter destination via sustainable modes of transport.

3.7.4 The bus service 16 is located within a short walking distance of the development site, and operates on an hourly service. This offers access to Gorseinon town centre, as well as further destinations such as Swansea and Pontarddulais.

3.7.5 Therefore, it is considered that there are opportunities for residents of the proposed development to utilise a range of facilities and amenities by sustainable modes of transport. The development of the site contributes positively to sustainable development by offering a genuine choice of transport options.

4. Development proposals

4.1 Overview

4.1.1 As part of the development, it is proposed to provide a total of 50 dwellings, includes flats, houses and bungalows. The latest illustrative masterplan is presented in Appendix B. A detailed description of the proposed schedule of development is presented in Table 4.1.

Table 4.1: House type numbers

House Type	Number	Proposed car parking provision	Wheelchair Adapted
Flats	22		
1B2p	18	18	
2B3p	2	2	
1B2p	2	2	Yes
Houses	23		
2B4p	4	8	
3B5ps (Corner Turner)	2	4	
3B5p (Gable Front)	4	8	
3B5p	8	16	
4B6p	2	4	
4B7p	3	6	
Bungalows	5		
2B3p	2	4	
2B3p	2	4	Yes
3B5p	1	2	
TOTAL	50	78	

4.1.2 It is proposed to provide a total of 50 dwellings as part of the Phase 2 development.

4.1.3 Phase 1 development has planning permission for a total of 165 residential dwellings, with a total of 144 homes being built. The proposed development would therefore contribute to a net increase of 29 dwellings compared to the consented scheme.

4.2 Proposed access strategy

Vehicular access

- 4.2.1 Access to the development site will be gained via Min Yr Aber, from the existing access road serving Phase 1. A spur road from the existing access will be provided to access Phase 2. The main carriageway throughout the site is 6.8m wide.
- 4.2.2 A number of visibility splays (2.4m x 25m) have been undertaken throughout the onsite layout. These visibility splays show that the required visibility is achievable in both directions along each of the junctions in line with Manual for Streets (2007) design guidance for a 20mph road.
- 4.2.3 A forward visibility has been undertaken along Road 03 for 20mph x 25m.
- 4.2.4 The visibility splays are attached at Appendix C.

Pedestrian and cycle access

- 4.2.5 Pedestrian and cycle access will also be provided via Min Yr Aber, with a 2.0m-wide footway provided on both sides of the access road. This will connect to the footway provided around the development site.

4.3 Internal layout

- 4.3.1 The internal roads have been designed to accommodate the needs of delivery and servicing vehicles. Vehicle swept path analysis have been undertaken which demonstrates that the layout can accommodate service vehicles accessing and egressing the site in a forward gear.
- 4.3.2 Swept path analysis are presented in Appendix D, and include following vehicles accessing the development, manoeuvring onsite and exiting in a forward gear:
 - » a large car;
 - » 10.3m refuse vehicle; and,
 - » 9.22m rigid truck.

4.4 Parking strategy

Car parking policy

- 4.4.1 Swansea Council adopts CSS Wales Parking Standards 2014. The site is located in Zone 4 and required parking standards for residential dwellings are set out below in Table 4.2.

Table 4.2 Car Parking Maximum Requirements

Property Type	Allocated Spaces	Visitor Spaces	Disabled Parking Provision
Houses	1 space per bedroom (maximum requirement 3 spaces)	1 space per 5 units	There is no standard for disabled parking for residential development. Disabled parking spaces will be provided on-site in a case-by-case basis for residents.
Flats	1 space per bedroom (maximum requirement 3 spaces)		

Car parking provision

4.4.2 As part of the development, it is proposed to provide a total of 74 car parking spaces on site.

4.4.3 This is a proposed allocated of:

- » One car parking space for each flat: a total of 22 car parking spaces; and,
- » Two car parking spaces allocated to each of the residential dwelling: a total of 56 car parking spaces.

4.4.4 It is considered that the proposed car parking provision is sufficient to accommodate the likely parking demand generated by the proposed development, based on the type of development (100% affordable dwellings) and the edge of town location.

4.4.5 Based on the 2021 census data presented in Chapter 2, the proposed development could generate a total parking demand of 46 vehicles. It is considered that the proposed car parking provision is sufficient to accommodate the likely demand, which is in line with the maximum car parking requirements set out at Table 4.2, and in accordance with local and national policy.

Electric vehicle charging

4.4.6 Wales's 'Electric Vehicle Charging Strategy' states that users are responsible for installing their own charge point at existing properties. Residents wishing to install a charge point can apply to The Electric Vehicle Homecharge Scheme (EVHS) which provides grants of up to £350 per charge point.

Cycle parking policy

4.4.7 Cycle parking will need to be provided in line with the relevant cycle parking standards outlined at Wales Parking Standards, 2014. A summary of the cycle parking provision for residential development is included below at Table 4.3.

Table 4.3 Cycle Parking Minimum Standards

Land Use	Long stay	Short stay
Apartments	1 stand per 5 bedrooms	No requirement

Cycle parking provision

- 4.4.8 Cycle parking for houses and bungalows will be provided within a secure and covered shed in the rear garden of each house whilst each flat block will provide the required level of parking within a communal store. Based on standards, five cycle parking spaces will be provided for the flats.
- 4.4.9 Safe & secure cycle parking facilities have been considered as an integral part of the scheme, designed in accordance with standards set out in LTN 1/20 Cycling Infrastructure Design.

5. Trip generation

- 5.1.1 This section considers the traffic impact resulting from the trip generation of the site upon the local highway network.
- 5.1.2 The typical peak network hours of 08:00-09:00 and 17:00-18:00 for the AM and PM respectively have been assessed, assuming full occupation of the site.

5.2 Trip generation

Overview

- 5.2.1 The development proposals include plans for 50 new residential dwellings.
- 5.2.2 A review of the Trip Rate Information Computer System (TRICS) national database (version 7.11.2) has been undertaken to determine the level of traffic generation associated with both the proposed residential use.
- 5.2.3 The TRICS category of 'Mixed Private/Affordable' and number of dwellings similar to the development has been used. The selection criteria for both categories include edge of town areas in England, Wales and Scotland (excluding London).

Proposed trip generation

- 5.2.4 A TRICS assessment has been undertaken to determine the vehicular trips associated with the development site.
- 5.2.5 The trip rates associated with the proposed 50 housing units are provided in Table 5.1.

Table 5.1: Proposed mixed private/affordable trip rates and trip generation

Time	Trip Rate per Dwelling			Trip Generation – 50 Dwellings		
	Arrivals	Departures	Total	Arrivals	Departures	Total
08:00-09:00	0.133	0.351	0.484	7	18	24
17:00-18:00	0.300	0.158	0.458	15	8	23
Daily	2.32	2.162	4.482	116	108	224

- 5.2.6 Table 5.1 shows that the proposed development is likely to generate 24 two-way movements during the AM Peak, and 23 two-way movements during the PM Peak. Across the day, it will generate 224 two-way movements.
- 5.2.7 The TRICS outputs are included at Appendix E.

6. Summary & conclusions

6.1 Summary

- 6.1.1 Hydrock Consultants Ltd have prepared this Transport Statement (TS) on behalf of Pobl Group in support of a planning application for 50 residential dwellings located west of Gwynfaen farm in Penyrheol, Swansea.
- 6.1.2 This TS has been produced to provide the necessary information for the Swansea County Council to consider the merits of the development in terms of accessibility, highway safety and the impact of the development traffic on the local highway network.

6.2 Conclusions

- 6.2.1 In reviewing the details of the highway accident data, it is considered that there are no over-riding safety issues in the vicinity of the site that would be exacerbated by the proposed development.
- 6.2.2 There are a number of services and facilities including education, retail and food and beverage within accessible distance to the site in line with Manual for Streets guidance for 'walkable neighbourhoods'.
- 6.2.3 It is also considered that the site is located in a sustainable location with a bus stop in close proximity to the site. The site is also within reasonable cycling distance of a Gowerton railway station, providing a quick link to Swansea which is beneficial for both commuting and leisure purposes. Cycle links and a series of footways and PROWs are also located in the vicinity of the site and connect to a number of neighbouring residential areas.
- 6.2.4 The proposed level of car and cycle parking is considered to be in line with Wales Parking Standards, 2014 and caters adequately for the needs of residents of the development.
- 6.2.5 There is an increase in trips generated as a result of the development proposals, owing to the existing undeveloped nature of the site. Despite this, this increase is limited to just 24 two-way trips in the AM peak, and 23 two-way trips during the PM peak. It is therefore considered that the development will not have a 'severe' impact upon local highway network.
- 6.2.6 To conclude, in light of the assessment work and analysis within the TS, it is considered that the development would not have a material detrimental impact upon the operation and functioning of the local highway network. The proposed site accords with NPPF paragraph 111, and in terms of accessibility, the application site is situated in a location that would give rise to residents and visitors being able to walk, cycle and use public transport to travel to and from the site in line with NPPF paragraph 105.
- 6.2.7 Consequently, it is considered that there are no significant highways and transportation matters that should preclude the Local Planning Authority from approving this planning application..

Appendix A Bus Services

Mondays to Fridays

Water Street at Pontardulais Bus Station Stand 1, Pontarddulais	dep	06:10	07:15	08:25	09:15	10:25	11:25	12:25	13:25	14:25	15:25	16:40	17:40	18:40	19:40	20:16	21:06	22:06
Pontarddulais, opp 26 Dulais Road		06:11	07:16	08:26	09:16	10:26	11:26	12:26	13:26	14:26	15:26	16:41	17:41	18:41	19:41	20:17	21:07	22:07
Pontarddulais, opp Pontardulais Comprehensive		06:12	07:17	08:27	09:17	10:27	11:27	12:27	13:27	14:27	15:27	16:42	17:42	18:42	19:42	20:18	21:08	22:08
Pontarddulais, opp The Hollies		06:13	07:18	08:28	09:18	10:27	11:27	12:27	13:27	14:27	15:28	16:43	17:43	18:42	19:42	20:18	21:08	22:08
Glynhir Road before Cae-Gwyn Road, Pontarddulais		06:14	07:19	08:29	09:19	10:28	11:28	12:28	13:28	14:28	15:29	16:44	17:44	18:43	19:43	20:19	21:09	22:09
Glynhir Road after Heol-y-cae, Pontarddulais		06:14	07:19	08:29	09:19	10:29	11:29	12:29	13:29	14:29	15:29	16:44	17:44	18:44	19:44	20:20	21:10	22:10
Pontarddulais, o/s 124 Glynhir Road		06:15	07:20	08:30	09:20	10:29	11:29	12:29	13:29	14:29	15:30	16:45	17:45	18:44	19:44	20:20	21:10	22:10
Glynhir Road at Glanffrwd Square, Pentrebach		06:16	07:21	08:31	09:21	10:30	11:30	12:30	13:30	14:30	15:31	16:46	17:46	18:45	19:45	20:21	21:11	22:11
Pontarddulais, o/s 125 Glynhir Road		06:17	07:22	08:32	09:22	10:31	11:31	12:31	13:31	14:31	15:32	16:47	17:47	18:46	19:46	20:22	21:12	22:12
Glynhir Road before Heol-y-Cae, Pontarddulais		06:17	07:22	08:32	09:22	10:31	11:31	12:31	13:31	14:31	15:32	16:47	17:47	18:46	19:46	20:22	21:12	22:12
Glynhir Road after Cae-Gwyn Road, Pontarddulais		06:18	07:23	08:33	09:23	10:32	11:32	12:32	13:32	14:32	15:33	16:48	17:48	18:47	19:47	20:23	21:13	22:13
Caecerrig Road after Upper Mill Road, Pontarddulais		06:18	07:24	08:34	09:24	10:32	11:32	12:32	13:32	14:32	15:34	16:49	17:49	18:47	19:47	20:23	21:13	22:13
Allt-Iago Road by path Allt-Iago Road, Pontarddulais		06:19	07:24	08:34	09:24	10:33	11:33	12:33	13:33	14:33	15:34	16:49	17:49	18:48	19:48	20:24	21:14	22:14
Allt-Iago Road after Bryniago School, Pontarddulais		06:20	07:25	08:35	09:25	10:34	11:34	12:34	13:34	14:34	15:35	16:50	17:50	18:48	19:48	20:25	21:15	22:15
Pentre Road after King Hotel, Pontarddulais		06:20	07:26	08:36	09:26	10:34	11:34	12:34	13:34	14:34	15:36	16:51	17:51	18:49	19:49	20:25	21:15	22:15
Pentre Road before Pontardulais Cemetery, Pontarddulais		06:21	07:27	08:37	09:27	10:35	11:35	12:35	13:35	14:35	15:37	16:52	17:52	18:50	19:50	20:26	21:16	22:16
Wangron, nr Wangron		06:24	07:30	08:40	09:30	10:38	11:38	12:38	13:38	14:38	15:39	16:54	17:54	18:52	19:52	20:29	21:19	22:19
Pentre Road after Allt-y-Graban Road, Grovesend		06:25	07:32	08:42	09:32	10:39	11:39	12:39	13:39	14:39	15:41	16:56	17:56	18:54	19:54	20:30	21:20	22:20
High Street after Station Road, Grovesend		06:27	07:34	08:44	09:34	10:41	11:41	12:41	13:41	14:41	15:43	16:58	17:58	18:55	19:55	20:32	21:22	22:22
Grovesend, o/s 5 New Road		06:27	07:34	08:44	09:34	10:41	11:41	12:41	13:41	14:41	15:43	16:58	17:58	18:55	19:55	20:32	21:22	22:22
Ty'r-isha Road after Ty'r-isha Court, Grovesend		06:28	07:35	08:45	09:35	10:42	11:42	12:42	13:42	14:42	15:44	16:59	17:59	18:56	19:56	20:33	21:23	22:23
Grovesend, o/s Club Plas Road		06:28	07:35	08:45	09:35	10:42	11:42	12:42	13:42	14:42	15:44	16:59	17:59	18:56	19:56	20:33	21:23	22:23
Grovesend, o/s 81 Coalbrook Road		06:29	07:36	08:46	09:36	10:43	11:43	12:43	13:43	14:43	15:45	17:00	18:00	18:57	19:57	20:33	21:23	22:23
Coalbrook Road after Mynydd Bach, Grovesend		06:30	07:37	08:47	09:37	10:44	11:44	12:44	13:44	14:44	15:46	17:01	18:01	18:58	19:58	20:34	21:24	22:24
Pen-cefn-arda Road before Westgrove Court, Penyrheol		06:31	07:38	08:48	09:38	10:45	11:45	12:45	13:45	14:45	15:47	17:02	18:02	18:59	19:59	20:35	21:25	22:25
Pen-cefn-arda Road after Heol Elfed, Penyrheol		06:32	07:39	08:49	09:39	10:46	11:46	12:46	13:46	14:46	15:48	17:03	18:03	19:00	20:00	20:36	21:26	22:26
Pen-cefn-arda Road before Clos Vernon Watkins, Penyrheol		06:32	07:39	08:49	09:39	10:46	11:46	12:46	13:46	14:46	15:48	17:03	18:03	19:00	20:00	20:36	21:26	22:26
Gower View Road before Penyrheol Road, Penyrheol		06:33	07:40	08:50	09:40	10:47	11:47	12:47	13:47	14:47	15:49	17:04	18:04	19:01	20:01	20:37	21:27	22:27
Gower View Road before Chestnut Avenue Turn, Penyrheol		06:33	07:40	08:50	09:40	10:47	11:47	12:47	13:47	14:47	15:49	17:04	18:04	19:01	20:01	20:37	21:27	22:27
Penyrheol, o/s 24 Beech Crescent		06:33	07:40	08:50	09:40	10:47	11:47	12:47	13:47	14:47	15:49	17:04	18:04	19:01	20:01	20:37	21:27	22:27
Beech Crescent after Cedar Avenue, Penyrheol		06:34	07:41	08:51	09:41	10:48	11:48	12:48	13:48	14:48	15:50	17:05	18:05	19:02	20:02	20:38	21:28	22:28
Gower View Road before Fernhill Road, Gorseinon		06:35	07:42	08:52	09:42	10:49	11:49	12:49	13:49	14:49	15:51	17:06	18:06	19:03	20:03	20:39	21:29	22:29
Brynafon Road before Penyrheol Post Office, Penyrheol		06:36	07:43	08:53	09:43	10:50	11:50	12:50	13:50	14:50	15:51	17:06	18:07	19:04	20:04	20:40	21:30	22:30
Frampton Road after Bryngolau, Gorseinon																20:41	21:31	22:31
Alexandra Road after Loughor Crossroads, Loughor																20:43	21:33	22:33
Gorseinon, opp British Legion Cluk																20:43	21:33	22:33
Brynhfryd Road before Brynffynnon Road, Gorseinon		06:37	07:44	08:54	09:43	10:50	11:50	12:50	13:50	14:50	15:52	17:07	18:07	19:04	20:04			
Gorseinon, o/s Gorseinon Hospital		06:38	07:45	08:55	09:44	10:51	11:51	12:51	13:51	14:51	15:53	17:08	18:08	19:05	20:05			
Brynewel Road after Bryngwastad Road, Gorseinon		06:39	07:46	08:56	09:45	10:52	11:52	12:52	13:52	14:52	15:54	17:09	18:09	19:06	20:06			
Gorseinon, o/s Harlech Brynewel		06:39	07:46	08:56	09:45	10:52	11:52	12:52	13:52	14:52	15:54	17:09	18:09	19:06	20:06			
Gorseinon, o/s St Catherine's Church		06:41	07:48	08:58	09:47	10:54	11:54	12:54	13:54	14:54	15:56	17:11	18:11	19:08	20:08	20:45	21:35	22:35
West Street at Gorseinon Bus Station Stand 2, Gorseinon	arr	06:43	07:50	09:00	09:49	10:56	11:56	12:56	13:56	14:56	15:58	17:13	18:13	19:10	20:10	20:46	21:36	22:36
West Street at Gorseinon Bus Station Stand 2, Gorseinon	dep	06:48	07:55	09:05	09:54	11:01	12:01	13:01	14:01	15:01	16:03	17:18	18:15	19:12	20:10	20:46	21:36	22:36
West Street after Libanus Road, Gorseinon		06:49	07:57	09:07	09:55	11:02	12:02	13:02	14:02	15:03	16:05	17:20	18:16	19:13	20:11	20:47	21:37	22:37
West Street before Glanrhyd Terrace, Kingsbridge		06:50	07:58	09:08	09:57	11:04	12:04	13:04	14:04	15:04	16:06	17:21	18:17	19:14	20:12	20:48	21:38	22:38
Victoria Road after Tafarn-y-Trap, Kingsbridge		06:52	08:00	09:10	09:58	11:05	12:05	13:05	14:05	15:05	16:07	17:22	18:19	19:16	20:14	20:49	21:39	22:39
Kingsbridge, opp The West		06:53	08:01	09:11	09:59	11:06	12:06	13:06	14:06	15:06	16:08	17:23	18:20	19:17	20:15	20:50	21:40	22:40

kingsnidge, opp The wave	06:52	08:01	09:11	09:59	11:06	12:06	13:06	14:06	15:06	16:06	17:23	18:19	19:16	20:14	20:49	21:39	22:39	
Gowerton, opp The Harvester	06:54	08:03	09:13	10:00	11:07	12:07	13:07	14:07	15:08	16:10	17:25	18:21	19:18	20:16	20:50	21:40	22:40	
Gowerton, opp Gowerton Rugby Club	06:54	08:04	09:14	10:01	11:08	12:08	13:08	14:08	15:09	16:11	17:26	18:21	19:18	20:16	20:51	21:41	22:41	
Gowerton, opp Gowerton Surgery	06:55	08:04	09:14	10:02	11:09	12:09	13:09	14:09	15:10	16:12	17:27	18:22	19:19	20:17	20:51	21:41	22:41	
Gowerton, o/s 9 Mount Street	06:56	08:06	09:16	10:03	11:10	12:10	13:10	14:10	15:11	16:13	17:28	18:23	19:20	20:18	20:52	21:42	22:42	
Hill Street after 1 Hill Street, Gowerton	06:20	06:57	08:07	09:17	10:04	11:11	12:11	13:11	14:11	15:12	16:14	17:29	18:24	19:21	20:19	20:53	21:43	22:43
Gowerton, opp former Post Office	06:21	06:58	08:08	09:18	10:05	11:12	12:12	13:12	14:12	15:13	16:15	17:30	18:25	19:22	20:20	20:54	21:44	22:44
Gowerton, nr former Gowerton Police Station	06:22	06:59	08:09	09:19	10:06	11:13	12:13	13:13	14:13	15:14	16:16	17:31	18:26	19:23	20:21	20:55	21:45	22:45
Gowerton, opp 86 Gorwydd Road	06:22	07:00	08:10	09:20	10:07	11:14	12:14	13:14	14:14	15:15	16:17	17:32	18:27	19:24	20:21	20:55	21:45	22:45
Wauarlwyydd, o/s 194 Bishwell Park	06:23	07:01	08:11	09:21	10:08	11:15	12:15	13:15	14:15	15:16	16:18	17:33	18:28	19:25	20:22	20:56	21:46	22:46
Swansea Road after Derwen Close, Wauarlwyydd	06:24	07:02	08:12	09:22	10:09	11:16	12:16	13:16	14:16	15:17	16:19	17:34	18:29	19:26	20:23	20:57	21:47	22:47
Swansea Road before Westfield Road, Wauarlwyydd	06:24	07:02	08:12	09:22	10:09	11:16	12:16	13:16	14:16	15:18	16:20	17:35	18:29	19:26	20:23	20:57	21:47	22:47
Wauarlwyydd, o/s Sardis Church	06:25	07:03	08:13	09:23	10:10	11:17	12:17	13:17	14:17	15:19	16:21	17:36	18:30	19:27	20:24	20:58	21:48	22:48
Wauarlwyydd, nr Swansea Road Alcoa	06:26	07:04	08:14	09:24	10:11	11:18	12:18	13:18	14:18	15:20	16:22	17:37	18:31	19:28	20:25	20:59	21:49	22:49
Swansea Road before Masons Arms, Wauarlwyydd	06:26	07:05	08:15	09:25	10:12	11:19	12:19	13:19	14:19	15:21	16:23	17:38	18:32	19:29	20:26	21:00	21:50	22:50
Swansea Road after George's Corner, Wauarlwyydd	06:27	07:06	08:16	09:26	10:13	11:20	12:20	13:20	14:20	15:22	16:24	17:39	18:33	19:29	20:27	21:00	21:50	22:50
Swansea Road before Village Inn, Wauarlwyydd	06:27	07:07	08:17	09:27	10:14	11:21	12:21	13:21	14:21	15:23	16:25	17:40	18:33	19:30	20:28	21:01	21:51	22:51
Cwmbach Road after Gypsy Cross, Wauarlwyydd	06:28	07:08	08:18	09:28	10:15	11:22	12:22	13:22	14:22	15:24	16:26	17:41	18:34	19:31	20:29	21:02	21:52	22:52
Wauarlwyydd, o/s 352 Woodlands	06:29	07:09	08:19	09:29	10:16	11:23	12:23	13:23	14:23	15:25	16:27	17:42	18:35	19:32	20:30	21:02	21:52	22:52
Cockett, o/s 93 Cwmbach Road	06:31	07:11	08:21	09:31	10:18	11:25	12:25	13:25	14:25	15:27	16:29	17:44	18:37	19:34	20:32	21:04	21:54	22:54
Cockett, nr former Station	06:32	07:12	08:22	09:32	10:18	11:25	12:25	13:25	14:25	15:27	16:29	17:44	18:37	19:34	20:33	21:04	21:54	22:54
Cockett Road after St Peter's Church, Cockett	06:33	07:14	08:24	09:34	10:20	11:27	12:27	13:27	14:27	15:29	16:31	17:46	18:39	19:36	20:35	21:05	21:55	22:55
Cockett, nr Cockett Road Allotments	06:33	07:15	08:25	09:35	10:21	11:28	12:28	13:28	14:28	15:30	16:32	17:47	18:39	19:36	20:35	21:05	21:55	22:55
Cockett, o/s Gors Primary School	06:34	07:16	08:26	09:36	10:22	11:29	12:29	13:29	14:29	15:31	16:33	17:48	18:40	19:37	20:36	21:06	21:56	22:56
Gors Avenue after Gomer Road, Townhill	06:35	07:18	08:28	09:38	10:24	11:31	12:31	13:31	14:31	15:33	16:35	17:50	18:42	19:39	20:38	21:07	21:57	22:57
Gors Avenue after Gwent Road, Townhill	06:36	07:20	08:30	09:39	10:25	11:32	12:32	13:32	14:32	15:35	16:37	17:52	18:43	19:40	20:39	21:08	21:58	22:58
Gors Avenue before Dewi Terrace, Mayhill	06:38	07:22	08:32	09:41	10:27	11:34	12:34	13:34	14:34	15:36	16:38	17:53	18:44	19:41	20:40	21:09	21:59	22:59
Mayhill, o/s 57 Gors Avenue Middle	06:39	07:23	08:33	09:42	10:28	11:35	12:35	13:35	14:35	15:37	16:39	17:54	18:45	19:42	20:41	21:09	21:59	22:59
Gors Avenue before Mayhill Turn, Mayhill	07:24	08:34	09:43	10:29	11:36	12:36	13:36	14:36	15:39	16:41	17:56	18:46	19:43	20:42				
Gors Road before Jack in the Box, Mayhill	07:25	08:35	09:44	10:30	11:37	12:37	13:37	14:37	15:40	16:42	17:57	18:47	19:44	20:43				
Waun Wen, nr Waun Wen Inn	07:26	08:36	09:45	10:31	11:38	12:38	13:38	14:38	15:41	16:43	17:58	18:48	19:45	20:44				
Carmarthen Street before Zoar Chapel, Waun Wen	07:27	08:37	09:46	10:32	11:39	12:39	13:39	14:39	15:42	16:44	17:59	18:49	19:46	20:44				
High Street at Dyfatty, Hafod	07:29	08:39	09:48	10:34	11:41	12:41	13:41	14:41	15:43	16:45	18:00	18:50	19:47	20:46				
Swansea, o/s High Street Station	07:30	08:40	09:49	10:35	11:42	12:42	13:42	14:42	15:45	16:47	18:02	18:51	19:48	20:47				
Swansea, nr Orchard Street	07:31	08:41	09:50	10:36	11:43	12:43	13:43	14:43	15:46	16:48	18:03	18:52	19:49	20:48				
Swansea, opp The Kingsway	07:33	08:43	09:52	10:38	11:45	12:45	13:45	14:45	15:47	16:49	18:04	18:53	19:50	20:48				
Townhill Road after Gors Avenue, Mayhill	06:40															21:10	22:00	23:00
Townhill Road before Gwili Terrace, Mayhill	06:41															21:11	22:01	23:01
Townhill Road before Alun Road, Mayhill	06:44															21:12	22:02	23:02
Townhill Road after Mayhill Shops, Mayhill	06:45															21:12	22:02	23:02
Mayhill, o/s Fairfield Club	06:45															21:13	22:03	23:03
Townhill, o/s Townhill School	06:46															21:13	22:03	23:03
Townhill, o/s Leakers Shops	06:47															21:14	22:04	23:04
Terrace Road after St Jude's Church, Mount Pleasant	06:50															21:15	22:05	23:05
Mount Pleasant after Mount Pleasant Hospital, Mount Pleasant	06:51															21:16	22:06	23:06
Mount Pleasant before Swansea Central Police Station, Mount Pleasant	06:52															21:16	22:06	23:06
Swansea, Christina Street (on)	06:54															21:18	22:08	23:08
West Way at Swansea Bus Station Stand S, Swansea	arr 06:57	07:36	08:46	09:55	10:41	11:48	12:48	13:48	14:48	15:50	16:52	18:07	18:56	19:53	20:51	21:19	22:09	23:09

Compiled from data for the period Tue 03-Sep-2024 to Mon 09-Sep-2024. Times not in bold are estimated by using the distance between the stops.

Saturdays

Water Street at Pontardulais Bus Station Stand 1, Pontarddulais	dep	06:20	07:20	08:20	09:20	10:20	11:25	12:25	13:25	14:25	15:25	16:25	17:25	18:25	19:20	20:16	21:06	22:06
Pontarddulais, opp 26 Dulais Road		06:21	07:21	08:21	09:21	10:21	11:26	12:26	13:26	14:26	15:26	16:26	17:26	18:26	19:21	20:17	21:07	22:07
Pontarddulais, opp Pontardulais Comprehensive		06:22	07:22	08:22	09:22	10:22	11:27	12:27	13:27	14:27	15:27	16:27	17:27	18:27	19:22	20:18	21:08	22:08
Pontarddulais, opp The Hollies		06:22	07:22	08:22	09:22	10:22	11:27	12:27	13:27	14:27	15:27	16:27	17:27	18:27	19:22	20:18	21:08	22:08
Glynhir Road before Cae-Gwyn Road, Pontarddulais		06:23	07:23	08:23	09:23	10:23	11:28	12:28	13:28	14:28	15:28	16:28	17:28	18:27	19:22	20:19	21:09	22:09
Glynhir Road after Heol-y-cae, Pontarddulais		06:24	07:24	08:24	09:24	10:24	11:29	12:29	13:29	14:29	15:29	16:29	17:29	18:28	19:23	20:20	21:10	22:10
Pontarddulais, o/s 124 Glynhir Road		06:24	07:24	08:24	09:24	10:24	11:29	12:29	13:29	14:29	15:29	16:29	17:29	18:29	19:24	20:20	21:10	22:10
Glynhir Road at Glanffrwd Square, Pentrebach		06:25	07:25	08:25	09:25	10:25	11:30	12:30	13:30	14:30	15:30	16:30	17:30	18:29	19:24	20:21	21:11	22:11
Pontarddulais, o/s 125 Glynhir Road		06:25	07:26	08:26	09:26	10:26	11:31	12:31	13:31	14:31	15:31	16:31	17:31	18:30	19:25	20:22	21:12	22:12
Glynhir Road before Heol-y-Cae, Pontarddulais		06:26	07:26	08:26	09:26	10:26	11:31	12:31	13:31	14:31	15:31	16:31	17:31	18:30	19:25	20:22	21:12	22:12
Glynhir Road after Cae-Gwyn Road, Pontarddulais		06:27	07:27	08:27	09:27	10:27	11:32	12:32	13:32	14:32	15:32	16:32	17:32	18:31	19:26	20:23	21:13	22:13
Caecerrig Road after Upper Mill Road, Pontarddulais		06:27	07:27	08:27	09:27	10:27	11:32	12:32	13:32	14:32	15:32	16:32	17:32	18:31	19:26	20:23	21:13	22:13
Allt-Iago Road by path Allt-Iago Road, Pontarddulais		06:27	07:28	08:28	09:28	10:28	11:33	12:33	13:33	14:33	15:33	16:33	17:33	18:32	19:27	20:24	21:14	22:14
Allt-Iago Road after Bryniago School, Pontarddulais		06:28	07:29	08:29	09:29	10:29	11:34	12:34	13:34	14:34	15:33	16:33	17:33	18:33	19:28	20:25	21:15	22:15
Pentre Road after King Hotel, Pontarddulais		06:29	07:29	08:29	09:29	10:29	11:34	12:34	13:34	14:34	15:34	16:34	17:34	18:33	19:28	20:25	21:15	22:15
Pentre Road before Pontardulais Cemetery, Pontarddulais		06:29	07:30	08:30	09:30	10:30	11:35	12:35	13:35	14:35	15:35	16:35	17:35	18:34	19:29	20:26	21:16	22:16
Waungron, nr Waungron		06:31	07:33	08:33	09:33	10:33	11:38	12:38	13:38	14:38	15:37	16:37	17:37	18:37	19:32	20:29	21:19	22:19
Pentre Road after Allt-y-Graban Road, Grovesend		06:33	07:34	08:34	09:34	10:34	11:39	12:39	13:39	14:39	15:39	16:39	17:39	18:38	19:33	20:30	21:20	22:20
High Street after Station Road, Grovesend		06:34	07:36	08:36	09:36	10:36	11:41	12:41	13:41	14:41	15:40	16:40	17:40	18:40	19:35	20:32	21:22	22:22
Grovesend, o/s 5 New Road		06:34	07:36	08:36	09:36	10:36	11:41	12:41	13:41	14:41	15:40	16:40	17:40	18:40	19:35	20:32	21:22	22:22
Ty'r-isha Road after Ty'r-isha Court, Grovesend		06:35	07:37	08:37	09:37	10:37	11:42	12:42	13:42	14:42	15:41	16:41	17:41	18:41	19:36	20:33	21:23	22:23
Grovesend, o/s Club Plas Road		06:35	07:37	08:37	09:37	10:37	11:42	12:42	13:42	14:42	15:41	16:41	17:41	18:41	19:36	20:33	21:23	22:23
Grovesend, o/s 81 Coalbrook Road		06:36	07:38	08:38	09:38	10:38	11:43	12:43	13:43	14:43	15:42	16:42	17:42	18:41	19:36	20:33	21:23	22:23
Coalbrook Road after Mynydd Bach, Grovesend		06:37	07:39	08:39	09:39	10:39	11:44	12:44	13:44	14:44	15:43	16:43	17:43	18:42	19:37	20:34	21:24	22:24
Pen-cefn-arda Road before Westgrove Court, Penyrheol		06:38	07:40	08:40	09:40	10:40	11:45	12:45	13:45	14:45	15:44	16:44	17:44	18:43	19:38	20:35	21:25	22:25
Pen-cefn-arda Road after Heol Elfed, Penyrheol		06:39	07:41	08:41	09:41	10:41	11:46	12:46	13:46	14:46	15:45	16:45	17:45	18:44	19:39	20:36	21:26	22:26
Pen-cefn-arda Road before Clos Vernon Watkins, Penyrheol		06:39	07:41	08:41	09:41	10:41	11:46	12:46	13:46	14:46	15:45	16:45	17:45	18:44	19:39	20:36	21:26	22:26
Gower View Road before Penyrheol Road, Penyrheol		06:40	07:42	08:42	09:42	10:42	11:47	12:47	13:47	14:47	15:46	16:46	17:46	18:45	19:40	20:37	21:27	22:27
Gower View Road before Chestnut Avenue Turn, Penyrheol		06:40	07:42	08:42	09:42	10:42	11:47	12:47	13:47	14:47	15:46	16:46	17:46	18:45	19:40	20:37	21:27	22:27
Penyrheol, o/s 24 Beech Crescent		06:40	07:42	08:42	09:42	10:42	11:47	12:47	13:47	14:47	15:46	16:46	17:46	18:45	19:40	20:37	21:27	22:27
Beech Crescent after Cedar Avenue, Penyrheol		06:41	07:43	08:43	09:43	10:43	11:48	12:48	13:48	14:48	15:47	16:47	17:47	18:46	19:41	20:38	21:28	22:28
Gower View Road before Fernhill Road, Gorseinon		06:42	07:44	08:44	09:44	10:44	11:49	12:49	13:49	14:49	15:48	16:48	17:48	18:47	19:42	20:39	21:29	22:29
Brynafon Road before Penyrheol Post Office, Penyrheol		06:42	07:45	08:45	09:45	10:45	11:50	12:50	13:50	14:50	15:48	16:48	17:48	18:48	19:43	20:40	21:30	22:30
Frampton Road after Bryngolau, Gorseinon																20:41	21:31	22:31
Alexandra Road after Loughor Crossroads, Loughor																20:43	21:33	22:33
Gorseinon, opp British Legion Club																20:43	21:33	22:33
Brynhafon Road before Brynffynnon Road, Gorseinon		06:42	07:45	08:45	09:45	10:45	11:50	12:50	13:50	14:50	15:48	16:48	17:48	18:49	19:44			
Gorseinon, o/s Gorseinon Hospital		06:43	07:46	08:46	09:46	10:46	11:51	12:51	13:51	14:51	15:49	16:49	17:49	18:50	19:45			
Brynafon Road after Bryngwastad Road, Gorseinon		06:43	07:46	08:46	09:47	10:47	11:52	12:52	13:52	14:52	15:50	16:50	17:50	18:50	19:45			
Gorseinon, o/s Harlech Brynafon		06:44	07:47	08:47	09:47	10:47	11:52	12:52	13:52	14:52	15:50	16:50	17:50	18:51	19:46			
Gorseinon, o/s St Catherine's Church		06:46	07:49	08:49	09:49	10:49	11:54	12:54	13:54	14:54	15:52	16:52	17:52	18:53	19:48	20:45	21:35	22:35
West Street at Gorseinon Bus Station Stand 2, Gorseinon	arr	06:47	07:50	08:50	09:51	10:51	11:56	12:56	13:56	14:56	15:54	16:54	17:54	18:54	19:49	20:46	21:36	22:36
West Street at Gorseinon Bus Station Stand 2, Gorseinon	dep	06:52	07:55	08:55	09:56	10:56	12:01	13:01	14:01	15:01	15:59	16:59	17:59	18:56	19:51	20:46	21:36	22:36
West Street after Libanus Road, Gorseinon		06:53	07:56	08:56	09:57	10:57	12:02	13:02	14:02	15:03	16:01	17:01	18:01	18:57	19:52	20:47	21:37	22:37
West Street before Glanrhyd Terrace, Kingsbridge		06:54	07:58	08:58	09:58	10:58	12:03	13:03	14:03	15:04	16:02	17:02	18:02	18:58	19:53	20:48	21:38	22:38
Victoria Road after Tafarn-y-Trap, Kingsbridge		06:55	07:59	08:59	10:00	11:00	12:05	13:05	14:05	15:06	16:04	17:04	18:04	19:00	19:55	20:49	21:39	22:39
Kingsbridge, opp The Wave		06:56	08:00	09:00	10:00	11:00	12:05	13:05	14:05	15:07	16:05	17:05	18:05	19:00	19:55	20:49	21:39	22:39

Gowerton, opp The Harvester	06:57	08:01	09:01	10:02	11:02	12:07	13:07	14:07	15:09	16:07	17:07	18:07	19:02	19:57	20:50	21:40	22:40
Gowerton, opp Gowerton Rugby Club	06:58	08:02	09:02	10:02	11:02	12:07	13:07	14:07	15:10	16:08	17:08	18:08	19:02	19:57	20:51	21:41	22:41
Gowerton, opp Gowerton Surgery	06:58	08:03	09:03	10:03	11:03	12:08	13:08	14:08	15:10	16:08	17:08	18:08	19:03	19:58	20:51	21:41	22:41
Gowerton, o/s 9 Mount Street	06:59	08:04	09:04	10:04	11:04	12:09	13:09	14:09	15:12	16:10	17:10	18:10	19:04	19:59	20:52	21:42	22:42
Hill Street after 1 Hill Street, Gowerton	07:00	08:05	09:05	10:05	11:05	12:10	13:10	14:10	15:13	16:11	17:11	18:11	19:05	20:00	20:53	21:43	22:43
Gowerton, opp former Post Office	07:01	08:06	09:06	10:06	11:06	12:11	13:11	14:11	15:14	16:12	17:12	18:12	19:06	20:01	20:54	21:44	22:44
Gowerton, nr former Gowerton Police Station	07:02	08:07	09:07	10:07	11:07	12:12	13:12	14:12	15:15	16:13	17:13	18:13	19:07	20:02	20:55	21:45	22:45
Gowerton, opp 86 Gorwydd Road	07:03	08:08	09:08	10:08	11:08	12:13	13:13	14:13	15:16	16:14	17:14	18:13	19:07	20:02	20:55	21:45	22:45
Waunarlywydd, o/s 194 Bishwell Park	07:04	08:09	09:09	10:09	11:09	12:14	13:14	14:14	15:17	16:15	17:15	18:14	19:08	20:03	20:56	21:46	22:46
Swansea Road after Derwen Close, Waunarlywydd	07:05	08:10	09:10	10:10	11:10	12:15	13:15	14:15	15:18	16:16	17:16	18:15	19:09	20:04	20:57	21:47	22:47
Swansea Road before Westfield Road, Waunarlywydd	07:05	08:10	09:10	10:11	11:11	12:16	13:16	14:16	15:18	16:16	17:16	18:15	19:09	20:04	20:57	21:47	22:47
Waunarlywydd, o/s Sardis Church	07:06	08:11	09:11	10:12	11:12	12:17	13:17	14:17	15:19	16:17	17:17	18:16	19:10	20:05	20:58	21:48	22:48
Waunarlywydd, nr Swansea Road Alcoa	07:07	08:12	09:12	10:13	11:13	12:18	13:18	14:18	15:20	16:18	17:18	18:17	19:11	20:06	20:59	21:49	22:49
Swansea Road before Masons Arms, Waunarlywydd	07:08	08:13	09:13	10:14	11:14	12:19	13:19	14:19	15:21	16:19	17:19	18:18	19:12	20:07	21:00	21:50	22:50
Swansea Road after George's Corner, Waunarlywydd	07:09	08:14	09:14	10:15	11:15	12:20	13:20	14:20	15:22	16:20	17:20	18:19	19:13	20:08	21:00	21:50	22:50
Swansea Road before Village Inn, Waunarlywydd	07:10	08:15	09:15	10:16	11:16	12:21	13:21	14:21	15:23	16:21	17:21	18:20	19:14	20:09	21:01	21:51	22:51
Cwmbach Road after Gypsy Cross, Waunarlywydd	07:11	08:16	09:16	10:17	11:17	12:22	13:22	14:22	15:24	16:22	17:22	18:21	19:15	20:10	21:02	21:52	22:52
Waunarlywydd, o/s 352 Woodlands	07:12	08:17	09:17	10:18	11:18	12:23	13:23	14:23	15:25	16:23	17:23	18:22	19:16	20:11	21:02	21:52	22:52
Cockett, o/s 93 Cwmbach Road	07:14	08:19	09:19	10:20	11:20	12:25	13:25	14:25	15:27	16:25	17:25	18:24	19:18	20:13	21:04	21:54	22:54
Cockett, nr former Station	07:14	08:19	09:19	10:20	11:20	12:25	13:25	14:25	15:27	16:25	17:25	18:25	19:19	20:13	21:04	21:54	22:54
Cockett Road after St Peter's Church, Cockett	07:16	08:21	09:21	10:22	11:22	12:27	13:27	14:27	15:29	16:27	17:27	18:27	19:21	20:14	21:05	21:55	22:55
Cockett, nr Cockett Road Allotments	07:16	08:21	09:21	10:22	11:22	12:27	13:27	14:27	15:30	16:28	17:28	18:27	19:21	20:15	21:05	21:55	22:55
Cockett, o/s Gors Primary School	07:17	08:22	09:22	10:23	11:23	12:28	13:28	14:28	15:31	16:29	17:29	18:28	19:22	20:16	21:06	21:56	22:56
Gors Avenue after Gomer Road, Townhill	07:19	08:24	09:24	10:25	11:25	12:30	13:30	14:30	15:33	16:31	17:31	18:30	19:24	20:17	21:07	21:57	22:57
Gors Avenue after Gwent Road, Townhill	07:20	08:25	09:25	10:26	11:26	12:31	13:31	14:31	15:34	16:32	17:32	18:31	19:25	20:18	21:08	21:58	22:58
Gors Avenue before Dewi Terrace, Mayhill	07:21	08:26	09:26	10:27	11:27	12:32	13:32	14:32	15:35	16:33	17:33	18:32	19:26	20:19	21:09	21:59	22:59
Mayhill, o/s 57 Gors Avenue Middle	07:22	08:27	09:27	10:28	11:28	12:33	13:33	14:33	15:36	16:34	17:34	18:33	19:27	20:20	21:09	21:59	22:59
Townhill Road after Gors Avenue, Mayhill															21:10	22:00	23:00
Townhill Road before Gwili Terrace, Mayhill															21:11	22:01	23:01
Townhill Road before Mayhill Post Office, Mayhill															21:11	22:01	23:01
Townhill Road before Alun Road, Mayhill															21:12	22:02	23:02
Townhill Road after Mayhill Shops, Mayhill															21:12	22:02	23:02
Mayhill, o/s Fairfield Club															21:13	22:03	23:03
Townhill, o/s Townhill School															21:13	22:03	23:03
Townhill, o/s Leakers Shops															21:14	22:04	23:04
Terrace Road after St Jude's Church, Mount Pleasant															21:15	22:05	23:05
Mount Pleasant after Mount Pleasant Hospital, Mount Pleasant															21:16	22:06	23:06
Mount Pleasant before Swansea Central Police Station, Mount Pleasant															21:16	22:06	23:06
Swansea, Christina Street (on)															21:18	22:08	23:08
Gors Avenue before Mayhill Turn, Mayhill	07:23	08:28	09:28	10:29	11:29	12:34	13:34	14:34	15:38	16:36	17:36	18:34	19:28	20:21			
Gors Road before Jack in the Box, Mayhill	07:24	08:29	09:29	10:30	11:30	12:35	13:35	14:35	15:39	16:37	17:37	18:35	19:29	20:21			
Waun Wen, nr Waun Wen Inn	07:25	08:30	09:30	10:31	11:31	12:36	13:36	14:36	15:40	16:38	17:38	18:36	19:30	20:22			
Carmarthen Street before Zoar Chapel, Waun Wen	07:26	08:31	09:31	10:32	11:32	12:37	13:37	14:37	15:41	16:39	17:39	18:37	19:31	20:23			
High Street at Dyfatty, Hafod	07:27	08:32	09:32	10:34	11:34	12:39	13:39	14:39	15:42	16:40	17:40	18:38	19:32	20:24			
Swansea, o/s High Street Station	07:28	08:33	09:33	10:35	11:35	12:40	13:40	14:40	15:44	16:42	17:42	18:39	19:33	20:25			
Swansea, nr Orchard Street	07:29	08:34	09:34	10:36	11:36	12:41	13:41	14:41	15:45	16:43	17:43	18:40	19:34	20:26			
Swansea, opp The Kingsway	07:30	08:35	09:35	10:37	11:37	12:42	13:42	14:42	15:46	16:44	17:44	18:41	19:35	20:27			
West Way at Swansea Bus Station Stand S, Swansea arr	07:33	08:38	09:38	10:40	11:40	12:45	13:45	14:45	15:49	16:47	17:47	18:44	19:38	20:29	21:19	22:09	23:09

Compiled from data for the period Tue 03-Sep-2024 to Mon 09-Sep-2024. Times not in bold are estimated by using the distance between the stops.

Sundays

Hendy Road in Hendy Road, Parc-hendy	dep	10:00	14:20	18:35		
Blue Anchor Road before Caban Isaac Road, Blue Anchor	arr	10:01	14:21	18:36		
Blue Anchor Road before Caban Isaac Road, Blue Anchor	dep	10:01	14:23	18:36		
Victoria Road before Ael-y-bryn Path, Penclawdd		10:03	14:25	18:38		
Penclawdd, nr Bancbach		10:04	14:26	18:40		
Penclawdd, opp Royal Oak		10:05	14:27	18:42		
Penclawdd, opp Health Centre		10:06	14:28	18:43		
Penclawdd, o/s Old Station		10:07	14:29	18:44		
Gowerton Road after Nurses Corner, Penclawdd		10:07	14:29	18:44		
Gowerton Road after Abercedy, Penclawdd		10:08	14:30	18:45		
Gowerton Road after Waun-y-felin, Penclawdd		10:09	14:31	18:46		
Penclawdd, opp Berthlwyd Inn		10:11	14:33	18:48		
Gowerton, o/s Halfway House		10:13	14:34	18:49		
Gowerton, nr Banc-y-cwm		10:14	14:35	18:50		
Bryn-y-mor Road after Ffordd Alltwn, Gowerton		10:16	14:37	18:52		
Gowerton, nr Ffos Felen		10:16	14:38	18:53		
Gowerton, o/s 9 Mount Street		10:17	14:38	18:53		
Hill Street after 1 Hill Street, Gowerton		10:18	12:08	14:39	16:32	18:54
Gowerton, opp former Post Office		10:19	12:09	14:40	16:33	18:55
Gowerton, nr former Gowerton Police Station		10:20	12:10	14:41	16:34	18:56
Gowerton, opp 86 Gorwydd Road		10:21	12:10	14:41	16:34	18:56
Waunarlyydd, o/s 194 Bishwell Park		10:22	12:11	14:42	16:35	18:57
Swansea Road after Derwen Close, Waunarlyydd		10:23	12:12	14:43	16:36	18:58
Bryn Road before Westwinds Close, Waunarlyydd		10:25	12:14	14:45	16:38	19:00
Waunarlyydd, o/s 121 Caer-gynydd Road Lower		10:26	12:14	14:45	16:38	19:00
Caer-gynydd Road after 83 Caer-gynydd Road Middle, Waunarlyydd		10:27	12:15	14:46	16:39	19:01
Waunarlyydd, opp 27 Caer-gynydd Road Upper		10:29	12:16	14:47	16:40	19:02
Swansea Road before Village Inn, Waunarlyydd		10:30	12:17	14:48	16:41	19:03
Cwmbach Road after Gypsy Cross, Waunarlyydd		10:31	12:18	14:49	16:42	19:04
Waunarlyydd, o/s 352 Woodlands		10:32	12:19	14:50	16:43	19:05
Cockett, o/s 93 Cwmbach Road		10:34	12:21	14:52	16:45	19:07
Cockett, nr former Station		10:34	12:21	14:52	16:45	19:07
Cockett Road after St Peter's Church, Cockett		10:35	12:23	14:54	16:47	19:09
Cockett, nr Cockett Road Allotments		10:36	12:23	14:54	16:47	19:09
Cockett, o/s Gors Primary School		10:37	12:24	14:55	16:48	19:10
Gors Avenue after Gomer Road, Townhill		10:38	12:26	14:57	16:50	19:12
Gors Avenue after Gwent Road, Townhill		10:39	12:27	14:58	16:51	19:13
Gors Avenue before Dewi Terrace, Mayhill		10:40	12:29	15:00	16:53	19:14
Mayhill, o/s 57 Gors Avenue Middle		10:41	12:30	15:01	16:54	19:15
Gors Avenue before Mayhill Turn, Mayhill		10:42	12:31	15:02	16:55	19:16
Waun Wen, nr Waun Wen Inn		10:44	12:33	15:04	16:57	19:18
Carmarthen Street before Zoar Chapel, Waun Wer		10:45	12:34	15:05	16:58	19:19
High Street at Dyfatty, Hafod		10:47	12:36	15:07	17:00	19:20
Swansea, o/s High Street Station		10:48	12:37	15:08	17:01	19:21
Swansea, nr Orchard Street		10:49	12:38	15:09	17:02	19:22
Swansea, opp The Kingsway		10:50	12:40	15:11	17:04	19:23

arr 10:53 12:43 15:14 17:07 19:26

Compiled from data for the period Tue 03-Sep-2024 to Mon 09-Sep-2024. Times not in bold are estimated by using the distance between the stops.

Mondays to Fridays

West Way at Swansea Bus Station Stand S, Swansea dep	07:00	07:40	09:00	10:00	11:00	12:00	13:00	14:00	15:00	16:00	17:00	18:15	19:00	20:00	21:00	22:15	23:15
Princess Way at St Mary's Church A, Swansea	07:02	07:42	09:02	10:01	11:01	12:01	13:01	14:01	15:02	16:02	17:02	18:17	19:02	20:01	21:01	22:16	23:16
High Street at High Street 3, Swansea	07:05	07:45	09:05	10:04	11:04	12:04	13:04	14:04	15:06	16:06	17:06	18:19	19:04				
Swansea, opp High Street Station	07:06	07:46	09:06	10:05	11:05	12:05	13:05	14:05	15:07	16:07	17:07	18:21	19:06				
High Street at Dyfatty, Hafod	07:07	07:47	09:07	10:06	11:06	12:06	13:06	14:06	15:09	16:09	17:09	18:22	19:07				
Carmarthen Road before Zoar Chapel, Waun Wer	07:09	07:49	09:09	10:08	11:08	12:08	13:08	14:08	15:10	16:10	17:10	18:23	19:08				
Waun Wen, nr Waun Wen Inn	07:10	07:50	09:10	10:09	11:09	12:09	13:09	14:09	15:12	16:12	17:12	18:24	19:09				
Gors Avenue before Jack in the Box, Mayhill	07:11	07:51	09:11	10:10	11:10	12:10	13:10	14:10	15:13	16:13	17:13	18:25	19:10				
Mount Pleasant before Mount Pleasant Hospital, Mount Pleasant														20:06	21:06	22:21	23:21
Mount Pleasant, o/s St Jude's Church														20:07	21:07	22:22	23:22
Pen-y-graig Road after Leakers Shops, Townhill														20:08	21:08	22:23	23:23
Townhill, opp Lady of Lourdes														20:09	21:09	22:24	23:24
Mayhill, opp Fairfield Club														20:09	21:09	22:24	23:24
Mayhill, o/s Mayhill Shops														20:10	21:10	22:25	23:25
Townhill Road before Tegid Road, Mayhill														20:10	21:10	22:25	23:25
Mayhill, opp Mayhill Post Office														20:11	21:11	22:26	23:26
Mayhill, nr junct Townhill Road														20:12	21:12	22:27	23:27
Gors Avenue after Mayhill Turn, Mayhill	07:12	07:52	09:12	10:11	11:11	12:11	13:11	14:11	15:14	16:14	17:14	18:26	19:11	20:12	21:12	22:27	23:27
Mayhill, opp 49 Gors Avenue End	07:13	07:53	09:13	10:11	11:11	12:11	13:11	14:11	15:15	16:15	17:15	18:27	19:12	20:13	21:13	22:28	23:28
Gors Avenue after Dewi Terrace, Mayhill	07:14	07:54	09:14	10:12	11:12	12:12	13:12	14:12	15:16	16:16	17:16	18:28	19:13	20:14	21:14	22:29	23:29
Gors Avenue before Gwent Road, Townhill	07:15	07:55	09:15	10:13	11:13	12:13	13:13	14:13	15:18	16:18	17:18	18:29	19:14	20:14	21:14	22:29	23:29
Gors Avenue after Gors Avenue Shops, Townhill	07:16	07:56	09:16	10:14	11:14	12:14	13:14	14:14	15:19	16:19	17:19	18:30	19:15	20:15	21:15	22:30	23:30
Gors Avenue before Heol-y-Gors, Townhill	07:17	07:57	09:17	10:15	11:15	12:15	13:15	14:15	15:20	16:20	17:20	18:31	19:16	20:15	21:15	22:30	23:30
Cockett, o/s Gors Primary School	07:18	07:58	09:18	10:16	11:16	12:16	13:16	14:16	15:22	16:22	17:22	18:32	19:17	20:17	21:17	22:32	23:32
Cockett Road after Fry's Corner, Cockett	07:20	08:00	09:20	10:18	11:18	12:18	13:18	14:18	15:23	16:23	17:23	18:33	19:18	20:17	21:17	22:32	23:32
Cockett, opp St Peter's Church	07:21	08:01	09:21	10:19	11:19	12:19	13:19	14:19	15:25	16:25	17:25	18:34	19:19	20:18	21:18	22:33	23:33
Cockett, nr former Station	07:22	08:02	09:22	10:20	11:20	12:20	13:20	14:20	15:26	16:26	17:26	18:35	19:20	20:19	21:19	22:34	23:34
Cockett, opp 93 Cwmbach Road	07:22	08:02	09:22	10:20	11:20	12:20	13:20	14:20	15:26	16:26	17:26	18:35	19:20	20:19	21:19	22:34	23:34
Waunarwydd, opp 352 Woodlands	07:24	08:04	09:24	10:22	11:22	12:22	13:22	14:22	15:28	16:28	17:28	18:37	19:22	20:21	21:21	22:36	23:36
Cwmbach Road after Gypsy Cross, Waunarwydd	07:25	08:05	09:25	10:23	11:23	12:23	13:23	14:23	15:29	16:29	17:29	18:38	19:23	20:22	21:22	22:37	23:37
Waunarwydd, opp Village Inn	07:26	08:06	09:26	10:24	11:24	12:24	13:24	14:24	15:30	16:30	17:30	18:39	19:24	20:22	21:22	22:37	23:37
Swansea Road before George's Corner, Waunarwydd	07:27	08:07	09:27	10:25	11:25	12:25	13:25	14:25	15:31	16:31	17:31	18:40	19:25	20:23	21:23	22:38	23:38
Swansea Road after Masons Arms, Waunarwydd	07:28	08:08	09:28	10:26	11:26	12:26	13:26	14:26	15:32	16:32	17:32	18:40	19:25				
Waunarwydd, nr Swansea Road Alcoa	07:29	08:09	09:29	10:27	11:27	12:27	13:27	14:27	15:33	16:33	17:33	18:41	19:26				
Waunarwydd, opp Sardis Church	07:30	08:10	09:30	10:28	11:28	12:28	13:28	14:28	15:34	16:34	17:34	18:42	19:27				
Swansea Road before Westfield Road, Waunarwydd	07:31	08:11	09:31	10:29	11:29	12:29	13:29	14:29	15:35	16:35	17:35	18:42	19:27				
Victoria Road after Stepney Road, Waunarwydd														20:24	21:24	22:39	23:39
Waunarwydd, nr Victoria Road Park														20:24	21:24	22:39	23:39
Bryn Road before Bryn Garage, Waunarwydd														20:25	21:25	22:40	23:40
Swansea Road before Derwen Close, Waunarwydd	07:32	08:12	09:32	10:30	11:30	12:30	13:30	14:30	15:36	16:36	17:36	18:43	19:28	20:25	21:25	22:40	23:40
Waunarwydd, opp 151 Bishwell Park	07:33	08:13	09:33	10:31	11:31	12:31	13:31	14:31	15:38	16:38	17:38	18:44	19:29	20:26	21:26	22:41	23:41
Gowerton, o/s 94 Gorwydd Road	07:34	08:14	09:34	10:32	11:32	12:32	13:32	14:32	15:39	16:39	17:39	18:45	19:30	20:27	21:27	22:42	23:42
Gowerton, nr former Gowerton Police Station	07:35	08:15	09:35	10:33	11:33	12:33	13:33	14:33	15:40	16:40	17:40	18:46	19:31	20:27	21:27	22:42	23:42
Gowerton, o/s CK's	07:36	08:16	09:36	10:34	11:34	12:34	13:34	14:34	15:41	16:41	17:41	18:47	19:32	20:28	21:28	22:43	23:43
Hill Street after 1 Hill Street, Gowerton	07:38	08:18	09:38	10:35	11:35	12:35	13:35	14:35	15:43	16:43	17:43	18:48	19:33	20:29	21:29	22:44	23:44
Gowerton, o/s Gowerton Surgery	07:40	08:20	09:40	10:37	11:37	12:37	13:37	14:37	15:45	16:45	17:45	18:49	19:34	20:30	21:30	22:45	23:45
Gowerton, o/s Gowerton Rugby Club	07:40	08:20	09:40	10:37	11:37	12:37	13:37	14:37	15:46	16:46	17:46	18:50	19:35	20:31	21:31	22:46	23:46

Gowerton, o/s The Harvester	07:41	08:21	09:41	10:38	11:38	12:38	13:38	14:38	15:47	16:47	17:47	18:50	19:35	20:31	21:31	22:46	23:46		
Kingsbridge, o/s The Wave	07:43	08:23	09:42	10:39	11:39	12:39	13:39	14:39	15:49	16:49	17:49	18:52	19:37	20:32	21:32	22:47	23:47		
Victoria Road before Tafarn-y-Trap, Kingsbridge	07:44	08:24	09:43	10:40	11:40	12:40	13:40	14:40	15:50	16:50	17:50	18:52	19:37	20:33	21:33	22:48	23:48		
West Street after Glanrhyd Terrace, Kingsbridge	07:45	08:25	09:44	10:41	11:41	12:41	13:41	14:41	15:51	16:51	17:51	18:53	19:38	20:33	21:33	22:48	23:48		
West Street after Libanus Road, Gorseinon	07:46	08:26	09:45	10:42	11:42	12:42	13:42	14:42	15:53	16:53	17:53	18:54	19:39	20:34	21:34	22:49	23:49		
West Street at Gorseinon Bus Station Stand 5, Gorseinon	arr	07:47	08:27	09:46	10:43	11:43	12:43	13:43	14:43	15:54	16:54	17:54	18:55	19:40	20:35	21:35	22:50	23:50	
West Street at Gorseinon Bus Station Stand 5, Gorseinon	dep	06:40	07:50	08:30	09:49	10:46	11:46	12:46	13:46	14:46	15:57	16:57	17:57	18:56	19:41	20:36	21:36	22:51	
Alexandra Road after St Catherine's Church, Gorseinon	06:42	07:52	08:32	09:51	10:48	11:48	12:48	13:48	14:48	15:59	16:59	17:59	18:58	19:43	20:37	21:37	22:52		
Gorseinon, o/s British Legion Cluk																	20:38	21:38	22:53
Frampton Road after Loughor Crossroads, Loughor																	20:39	21:39	22:54
Frampton Road before Bryngolau, Gorseinon																	20:40	21:40	22:55
Gorseinon, nr British Legion Cluk	06:43	07:53	08:33	09:52	10:49	11:49	12:49	13:49	14:49	16:00	17:00	18:00	18:59	19:44					
Brynawel Road after Llys-y-Werin, Gorseinon	06:43	07:53	08:33	09:53	10:50	11:50	12:50	13:50	14:50	16:01	17:01	18:01	19:00	19:45					
Brynawel Road after Bryngwastad Road, Gorseinon	06:44	07:54	08:34	09:54	10:51	11:51	12:51	13:51	14:51	16:02	17:02	18:02	19:01	19:46					
Gorseinon, opp Gorseinon Hospital	06:44	07:54	08:34	09:54	10:51	11:51	12:51	13:51	14:51	16:02	17:02	18:02	19:01	19:46					
Brynhryfd Road after Brynffynnon Road, Gorseinon	06:45	07:55	08:35	09:55	10:52	11:52	12:52	13:52	14:52	16:03	17:03	18:03	19:02	19:47					
Brynafon Road after Penyrheol Post Office, Penyrheol	06:45	07:56	08:36	09:56	10:53	11:53	12:53	13:53	14:53	16:04	17:04	18:04	19:03	19:48	20:41	21:41	22:56		
Gower View Road after Fernhill Road, Gorseinon	06:46	07:57	08:37	09:57	10:54	11:54	12:54	13:54	14:54	16:05	17:05	18:05	19:04	19:49	20:42	21:42	22:57		
Penyrheol, o/s 5 Beech Crescent	06:46	07:58	08:38	09:58	10:55	11:55	12:55	13:55	14:55	16:06	17:06	18:06	19:05	19:50	20:42	21:42	22:57		
Beech Crescent before Chestnut Avenue, Penyrheol	06:47	07:58	08:38	09:58	10:55	11:55	12:55	13:55	14:55	16:06	17:06	18:06	19:05	19:50	20:43	21:43	22:58		
Chestnut Avenue at Gower View Roundabout, Penyrheol	06:47	07:59	08:39	09:59	10:56	11:56	12:56	13:56	14:56	16:07	17:07	18:07	19:06	19:51	20:43	21:43	22:58		
Gower View Road after Penyrheol Road, Penyrheol	06:47	07:59	08:39	09:59	10:56	11:56	12:56	13:56	14:56	16:07	17:07	18:07	19:06	19:51	20:43	21:43	22:58		
Pen-cefn-arda Road after Clos Vernon Watkins, Penyrheol	06:48	08:00	08:40	10:00	10:57	11:57	12:57	13:57	14:57	16:08	17:08	18:08	19:07	19:52	20:44	21:44	22:59		
Heol Pencefnarda before Heol Elfed, Penyrheol	06:48	08:00	08:40	10:00	10:57	11:57	12:57	13:57	14:57	16:09	17:09	18:08	19:07	19:52	20:44	21:44	22:59		
Penyrheol, opp 45 Pen-Cefn-Arda	06:49	08:01	08:41	10:01	10:58	11:58	12:58	13:58	14:58	16:10	17:10	18:09	19:08	19:53	20:45	21:45	23:00		
Coalbrook Road before Mynydd Bach, Grovesend	06:50	08:02	08:42	10:02	10:59	11:59	12:59	13:59	14:59	16:11	17:11	18:10	19:09	19:54	20:46	21:46	23:01		
Grovesend, o/s 88 Coalbrook Road	06:51	08:03	08:43	10:03	11:00	12:00	13:00	14:00	15:00	16:12	17:12	18:11	19:10	19:55	20:47	21:47	23:02		
Grovesend, opp Club Plas Road	06:52	08:04	08:44	10:04	11:01	12:01	13:01	14:01	15:01	16:13	17:13	18:12	19:11	19:56	20:48	21:48	23:03		
Grovesend, opp Tyrisha Court	06:52	08:04	08:44	10:04	11:01	12:01	13:01	14:01	15:02	16:14	17:14	18:12	19:11	19:56	20:48	21:48	23:03		
High Street before Station Road, Grovesend	06:53	08:05	08:45	10:05	11:02	12:02	13:02	14:02	15:02	16:14	17:14	18:13	19:12	19:57	20:49	21:49	23:04		
Pentre Road before Allt-y-Graban Road, Grovesend	06:54	08:07	08:47	10:07	11:04	12:04	13:04	14:04	15:04	16:16	17:16	18:15	19:14	19:59	20:50	21:50	23:05		
Waungron, nr Waungron	06:56	08:08	08:48	10:08	11:05	12:05	13:05	14:05	15:06	16:18	17:18	18:17	19:16	20:01	20:52	21:52	23:07		
Pentre Road after Pontarddulais Cemetery, Pontarddulais	06:58	08:11	08:51	10:11	11:08	12:08	13:08	14:08	15:09	16:21	17:21	18:19	19:18	20:03	20:54	21:54	23:09		
Pentre Road before King Hotel, Pontarddulais	06:59	08:12	08:52	10:12	11:09	12:09	13:09	14:09	15:11	16:23	17:23	18:20	19:19	20:04	20:55	21:55	23:10		
Pontarddulais, o/s Bryniago School	07:00	08:13	08:53	10:13	11:10	12:10	13:10	14:10	15:12	16:24	17:24	18:21	19:20	20:05	20:56	21:56	23:11		
Pontarddulais, o/s 71 Allt-Iago Road	07:00	08:13	08:53	10:13	11:10	12:10	13:10	14:10	15:12	16:24	17:24	18:22	19:21	20:06	20:56	21:56	23:11		
Caecerrig Road before Upper Mill Road, Pontarddulais	07:01	08:14	08:54	10:14	11:11	12:11	13:11	14:11	15:13	16:25	17:25	18:22	19:21	20:06	20:57	21:57	23:12		
Glynhir Road before Cae-Gwyn Road, Pontarddulais	07:01	08:14	08:54	10:14	11:11	12:11	13:11	14:11	15:14	16:26	17:26	18:23	19:22	20:07	20:57	21:57	23:12		
Glynhir Road after Heol-y-cae, Pontarddulais	07:02	08:15	08:55	10:15	11:12	12:12	13:12	14:12	15:14	16:26	17:26	18:24	19:23	20:08	20:58	21:58	23:13		
Pontarddulais, o/s 124 Glynhir Road	07:03	08:15	08:55	10:15	11:12	12:12	13:12	14:12	15:15	16:27	17:27	18:24	19:23	20:08	20:59	21:59	23:14		
Glynhir Road at Glanffrwd Square, Pentrebach	07:03	08:16	08:56	10:16	11:13	12:13	13:13	14:13	15:16	16:28	17:28	18:25	19:24	20:09	20:59	21:59	23:14		
Pontarddulais, o/s 125 Glynhir Road	07:04	08:17	08:57	10:17	11:14	12:14	13:14	14:14	15:17	16:29	17:29	18:26	19:25	20:10	21:00	22:00	23:15		
Glynhir Road before Heol-y-Cae, Pontarddulais	07:05	08:18	08:58	10:18	11:15	12:15	13:15	14:15	15:18	16:30	17:30	18:27	19:26	20:10	21:00	22:00	23:15		
Glynhir Road after Cae-Gwyn Road, Pontarddulais	07:05	08:18	08:58	10:18	11:15	12:15	13:15	14:15	15:19	16:31	17:31	18:28	19:27	20:11	21:01	22:01	23:16		
Caecerrig Road after Upper Mill Road, Pontarddulais	07:06	08:19	08:59	10:19	11:16	12:16	13:16	14:16	15:19	16:31	17:31	18:28	19:27	20:12	21:02	22:02	23:17		
Pontarddulais, o/s The Hollies	07:07	08:20	09:00	10:20	11:17	12:17	13:17	14:17	15:20	16:32	17:32	18:29	19:28	20:12	21:02	22:02	23:17		
Pontarddulais, o/s former Pontardulais Post Office	07:08	08:21	09:01	10:21	11:18	12:18	13:18	14:18	15:21	16:33	17:33	18:30	19:29	20:13	21:03	22:03	23:18		
Pontarddulais, opp 77 St Teilo Street	07:09	08:22	09:02	10:22	11:19	12:19	13:19	14:19	15:23	16:35	17:35	18:32	19:31	20:14	21:04	22:04	23:19		
Water Street at Pontardulais Bus Station Stand 1, Pontarddulais	arr	07:10	08:23	09:03	10:23	11:20	12:20	13:20	14:20	15:24	16:36	17:36	18:33	19:32	20:15	21:05	22:05	23:20	

Compiled from data for the period Tue 03-Sep-2024 to Mon 09-Sep-2024. Times not in bold are estimated by using the distance between the stops.

Saturdays

West Way at Swansea Bus Station Stand S, Swansea dep	07:00	08:00	09:00	10:00	11:00	12:00	13:00	14:00	15:00	16:00	17:00	18:00	19:00	20:00	21:00	22:15	23:15
Princess Way at St Mary's Church A, Swansea	07:01	08:01	09:01	10:02	11:02	12:02	13:02	14:02	15:02	16:02	17:02	18:02	19:02	20:01	21:01	22:16	23:16
High Street at High Street 3, Swansea	07:04	08:04	09:04	10:04	11:04	12:04	13:04	14:04	15:05	16:05	17:05	18:04	19:04				
Swansea, opp High Street Station	07:05	08:05	09:05	10:06	11:06	12:06	13:06	14:06	15:07	16:07	17:07	18:06	19:06				
High Street at Dyfatty, Hafod	07:06	08:06	09:06	10:07	11:07	12:07	13:07	14:07	15:08	16:08	17:08	18:07	19:07				
Carmarthen Road before Zoar Chapel, Waun Wer	07:07	08:07	09:07	10:08	11:08	12:08	13:08	14:08	15:09	16:09	17:09	18:08	19:08				
Waun Wen, nr Waun Wen Inn	07:08	08:08	09:08	10:09	11:09	12:09	13:09	14:09	15:11	16:11	17:11	18:09	19:09				
Gors Avenue before Jack in the Box, Mayhill	07:09	08:09	09:09	10:10	11:10	12:10	13:10	14:10	15:12	16:12	17:12	18:10	19:10				
Mount Pleasant before Mount Pleasant Hospital, Mount Pleasant														20:06	21:06	22:21	23:21
Mount Pleasant, o/s St Jude's Church														20:07	21:07	22:22	23:22
Pen-y-graig Road after Leakers Shops, Townhill														20:08	21:08	22:23	23:23
Townhill, opp Lady of Lourdes														20:09	21:09	22:24	23:24
Mayhill, opp Fairfield Club														20:09	21:09	22:24	23:24
Mayhill, o/s Mayhill Shops														20:10	21:10	22:25	23:25
Townhill Road before Tegid Road, Mayhill														20:10	21:10	22:25	23:25
Mayhill, opp Mayhill Post Office														20:11	21:11	22:26	23:26
Mayhill, nr junct Townhill Road														20:12	21:12	22:27	23:27
Gors Avenue after Mayhill Turn, Mayhill	07:10	08:10	09:10	10:11	11:11	12:11	13:11	14:11	15:13	16:13	17:13	18:11	19:11	20:12	21:12	22:27	23:27
Mayhill, opp 49 Gors Avenue End	07:10	08:10	09:10	10:12	11:12	12:12	13:12	14:12	15:14	16:14	17:14	18:12	19:12	20:13	21:13	22:28	23:28
Gors Avenue after Dewi Terrace, Mayhill	07:11	08:11	09:11	10:13	11:13	12:13	13:13	14:13	15:15	16:15	17:15	18:13	19:13	20:14	21:14	22:29	23:29
Gors Avenue before Gwent Road, Townhill	07:12	08:12	09:12	10:14	11:14	12:14	13:14	14:14	15:16	16:16	17:16	18:14	19:14	20:14	21:14	22:29	23:29
Gors Avenue after Gors Avenue Shops, Townhill	07:13	08:13	09:13	10:15	11:15	12:15	13:15	14:15	15:17	16:17	17:17	18:15	19:15	20:15	21:15	22:30	23:30
Gors Avenue before Heol-y-Gors, Townhill	07:13	08:13	09:13	10:16	11:16	12:16	13:16	14:16	15:18	16:18	17:18	18:15	19:15	20:15	21:15	22:30	23:30
Cockett, o/s Gors Primary School	07:15	08:15	09:15	10:17	11:17	12:17	13:17	14:17	15:19	16:19	17:19	18:17	19:17	20:17	21:17	22:32	23:32
Cockett Road after Fry's Corner, Cockett	07:15	08:15	09:15	10:18	11:18	12:18	13:18	14:18	15:20	16:20	17:20	18:17	19:17	20:17	21:17	22:32	23:32
Cockett, opp St Peter's Church	07:16	08:16	09:16	10:19	11:19	12:19	13:19	14:19	15:21	16:21	17:21	18:18	19:18	20:18	21:18	22:33	23:33
Cockett, nr former Station	07:17	08:17	09:17	10:20	11:20	12:20	13:20	14:20	15:22	16:22	17:22	18:19	19:19	20:19	21:19	22:34	23:34
Cockett, opp 93 Cwmbach Road	07:17	08:17	09:17	10:20	11:20	12:20	13:20	14:20	15:23	16:23	17:23	18:20	19:20	20:19	21:19	22:34	23:34
Waunarwydd, opp 352 Woodlands	07:19	08:19	09:19	10:22	11:22	12:22	13:22	14:22	15:25	16:25	17:25	18:22	19:22	20:21	21:21	22:36	23:36
Cwmbach Road after Gypsy Cross, Waunarwydd	07:20	08:20	09:20	10:23	11:23	12:23	13:23	14:23	15:26	16:26	17:26	18:23	19:23	20:22	21:22	22:37	23:37
Waunarwydd, opp Village Inn	07:21	08:21	09:21	10:24	11:24	12:24	13:24	14:24	15:27	16:27	17:27	18:24	19:24	20:22	21:22	22:37	23:37
Swansea Road before George's Corner, Waunarwydd	07:22	08:22	09:22	10:25	11:25	12:25	13:25	14:25	15:28	16:28	17:28	18:25	19:25	20:23	21:23	22:38	23:38
Swansea Road after Masons Arms, Waunarwydd	07:23	08:23	09:23	10:26	11:26	12:26	13:26	14:26	15:29	16:29	17:29	18:25	19:25				
Waunarwydd, nr Swansea Road Alcoa	07:24	08:24	09:24	10:27	11:27	12:27	13:27	14:27	15:30	16:30	17:30	18:26	19:26				
Waunarwydd, opp Sardis Church	07:25	08:25	09:25	10:28	11:28	12:28	13:28	14:28	15:31	16:31	17:31	18:27	19:27				
Swansea Road before Westfield Road, Waunarwydd	07:26	08:26	09:26	10:29	11:29	12:29	13:29	14:29	15:32	16:32	17:32	18:28	19:28				
Victoria Road after Stepney Road, Waunarwydd														20:24	21:24	22:39	23:39
Waunarwydd, nr Victoria Road Park														20:24	21:24	22:39	23:39
Bryn Road before Bryn Garage, Waunarwydd														20:25	21:25	22:40	23:40
Swansea Road before Derwen Close, Waunarwydd	07:27	08:27	09:27	10:30	11:30	12:30	13:30	14:30	15:33	16:33	17:33	18:29	19:29	20:25	21:25	22:40	23:40
Waunarwydd, opp 151 Bishwell Park	07:28	08:28	09:28	10:31	11:31	12:31	13:31	14:31	15:34	16:34	17:34	18:30	19:30	20:26	21:26	22:41	23:41
Gowerton, o/s 94 Gorwydd Road	07:29	08:29	09:29	10:32	11:32	12:32	13:32	14:32	15:35	16:35	17:35	18:31	19:31	20:27	21:27	22:42	23:42
Gowerton, nr former Gowerton Police Station	07:30	08:30	09:30	10:33	11:33	12:33	13:33	14:33	15:36	16:36	17:36	18:32	19:32	20:27	21:27	22:42	23:42
Gowerton, o/s CK's	07:31	08:31	09:31	10:34	11:34	12:34	13:34	14:34	15:37	16:37	17:37	18:33	19:33	20:28	21:28	22:43	23:43
Hill Street after 1 Hill Street, Gowerton	07:32	08:32	09:32	10:35	11:35	12:35	13:35	14:35	15:38	16:38	17:38	18:34	19:34	20:29	21:29	22:44	23:44
Gowerton, o/s Gowerton Surgery	07:34	08:34	09:34	10:37	11:37	12:37	13:37	14:37	15:40	16:40	17:40	18:36	19:36	20:30	21:30	22:45	23:45
Gowerton, o/s Gowerton Rugby Club	07:34	08:34	09:34	10:37	11:37	12:37	13:37	14:37	15:40	16:40	17:40	18:36	19:36	20:31	21:31	22:46	23:46

Gowerton, o/s The Harvester	07:35	08:35	09:35	10:38	11:38	12:38	13:38	14:38	15:41	16:41	17:41	18:37	19:37	20:31	21:31	22:46	23:46	
Kingsbridge, o/s The Wave	07:37	08:37	09:37	10:40	11:40	12:40	13:40	14:40	15:43	16:43	17:43	18:38	19:38	20:32	21:32	22:47	23:47	
Victoria Road before Tafarn-y-Trap, Kingsbridge	07:38	08:38	09:38	10:41	11:41	12:41	13:41	14:41	15:44	16:44	17:44	18:39	19:39	20:33	21:33	22:48	23:48	
West Street after Glanrhyd Terrace, Kingsbridge	07:39	08:39	09:39	10:42	11:42	12:42	13:42	14:42	15:45	16:45	17:45	18:40	19:40	20:33	21:33	22:48	23:48	
West Street after Libanus Road, Gorseinon	07:40	08:40	09:40	10:43	11:43	12:43	13:43	14:43	15:46	16:46	17:46	18:41	19:41	20:34	21:34	22:49	23:49	
West Street at Gorseinon Bus Station Stand 5, Gorseinon	arr	07:41	08:41	09:41	10:44	11:44	12:44	13:44	14:44	15:47	16:47	17:47	18:42	19:42	20:35	21:35	22:50	23:50
West Street at Gorseinon Bus Station Stand 5, Gorseinon	dep	06:46	07:44	08:44	09:44	10:47	11:47	12:47	13:47	14:47	15:50	16:50	17:50	18:43	19:43	20:36	21:36	22:51
Alexandra Road after St Catherine's Church, Gorseinon	06:48	07:46	08:46	09:46	10:49	11:49	12:49	13:49	14:49	15:52	16:52	17:52	18:45	19:45	20:37	21:37	22:52	
Gorseinon, o/s British Legion Cluk																20:38	21:38	22:53
Frampton Road after Loughor Crossroads, Loughor																20:39	21:39	22:54
Frampton Road before Bryngolau, Gorseinon																20:40	21:40	22:55
Gorseinon, nr British Legion Cluk	06:49	07:47	08:47	09:47	10:50	11:50	12:50	13:50	14:50	15:53	16:53	17:53	18:46	19:46				
Brynawel Road after Llys-y-Werin, Gorseinon	06:49	07:47	08:47	09:47	10:50	11:50	12:50	13:50	14:50	15:54	16:54	17:54	18:46	19:46				
Brynawel Road after Bryngwastad Road, Gorseinon	06:50	07:48	08:48	09:48	10:51	11:51	12:51	13:51	14:51	15:55	16:55	17:55	18:47	19:47				
Gorseinon, opp Gorseinon Hospital	06:50	07:48	08:48	09:48	10:51	11:51	12:51	13:51	14:51	15:55	16:55	17:55	18:47	19:47				
Brynhryfd Road after Brynffynnon Road, Gorseinon	06:51	07:49	08:49	09:49	10:52	11:52	12:52	13:52	14:52	15:56	16:56	17:56	18:48	19:48				
Brynafon Road after Penyrheol Post Office, Penyrheol	06:51	07:49	08:49	09:49	10:52	11:52	12:52	13:52	14:52	15:57	16:57	17:57	18:48	19:48	20:41	21:41	22:56	
Gower View Road after Fernhill Road, Gorseinon	06:52	07:50	08:50	09:50	10:53	11:53	12:53	13:53	14:53	15:58	16:58	17:58	18:49	19:49	20:42	21:42	22:57	
Penyrheol, o/s 5 Beech Crescent	06:53	07:51	08:51	09:51	10:54	11:54	12:54	13:54	14:54	15:59	16:59	17:59	18:50	19:50	20:42	21:42	22:57	
Beech Crescent before Chestnut Avenue, Penyrheol	06:53	07:51	08:51	09:51	10:54	11:54	12:54	13:54	14:54	15:59	16:59	17:59	18:50	19:50	20:43	21:43	22:58	
Chestnut Avenue at Gower View Roundabout, Penyrheol	06:54	07:52	08:52	09:52	10:55	11:55	12:55	13:55	14:55	16:00	17:00	18:00	18:51	19:51	20:43	21:43	22:58	
Gower View Road after Penyrheol Road, Penyrheol	06:54	07:52	08:52	09:52	10:55	11:55	12:55	13:55	14:55	16:00	17:00	18:00	18:51	19:51	20:43	21:43	22:58	
Pen-cefn-arda Road after Clos Vernon Watkins, Penyrheol	06:55	07:53	08:53	09:53	10:56	11:56	12:56	13:56	14:56	16:01	17:01	18:01	18:52	19:52	20:44	21:44	22:59	
Heol Pencefnarda before Heol Elfed, Penyrheol	06:55	07:53	08:53	09:54	10:57	11:57	12:57	13:57	14:57	16:02	17:02	18:02	18:53	19:53	20:44	21:44	22:59	
Penyrheol, opp 45 Pen-Cefn-Arda	06:56	07:54	08:54	09:55	10:58	11:58	12:58	13:58	14:58	16:03	17:03	18:03	18:54	19:54	20:45	21:45	23:00	
Coalbrook Road before Mynydd Bach, Grovesend	06:57	07:55	08:55	09:56	10:59	11:59	12:59	13:59	14:59	16:04	17:04	18:04	18:55	19:55	20:46	21:46	23:01	
Grovesend, o/s 88 Coalbrook Road	06:58	07:56	08:56	09:57	11:00	12:00	13:00	14:00	15:00	16:05	17:05	18:05	18:56	19:56	20:47	21:47	23:02	
Grovesend, opp Club Plas Road	06:59	07:57	08:57	09:58	11:01	12:01	13:01	14:01	15:01	16:06	17:06	18:06	18:57	19:57	20:48	21:48	23:03	
Grovesend, opp Tyrisha Court	06:59	07:57	08:57	09:58	11:01	12:01	13:01	14:01	15:01	16:06	17:06	18:06	18:57	19:57	20:48	21:48	23:03	
High Street before Station Road, Grovesend	07:00	07:58	08:58	09:59	11:02	12:02	13:02	14:02	15:02	16:07	17:07	18:07	18:58	19:58	20:49	21:49	23:04	
Pentre Road before Allt-y-Graban Road, Grovesend	07:01	07:59	08:59	10:01	11:04	12:04	13:04	14:04	15:03	16:08	17:08	18:08	18:59	19:59	20:50	21:50	23:05	
Waungron, nr Waungron	07:03	08:01	09:01	10:02	11:05	12:05	13:05	14:05	15:05	16:10	17:10	18:10	19:01	20:01	20:52	21:52	23:07	
Pentre Road after Pontarddulais Cemetery, Pontarddulais	07:05	08:03	09:03	10:05	11:08	12:08	13:08	14:08	15:07	16:12	17:12	18:12	19:03	20:03	20:54	21:54	23:09	
Pentre Road before King Hotel, Pontarddulais	07:05	08:04	09:04	10:06	11:09	12:09	13:09	14:09	15:08	16:13	17:13	18:13	19:04	20:04	20:55	21:55	23:10	
Pontarddulais, o/s Bryniago School	07:06	08:05	09:05	10:07	11:10	12:10	13:10	14:10	15:09	16:14	17:14	18:14	19:05	20:05	20:56	21:56	23:11	
Pontarddulais, o/s 71 Allt-Iago Road	07:07	08:05	09:05	10:07	11:10	12:10	13:10	14:10	15:09	16:14	17:14	18:14	19:05	20:05	20:56	21:56	23:11	
Caecerrig Road before Upper Mill Road, Pontarddulais	07:07	08:06	09:06	10:08	11:11	12:11	13:11	14:11	15:10	16:15	17:15	18:15	19:06	20:06	20:57	21:57	23:12	
Glynhir Road before Cae-Gwyn Road, Pontarddulais	07:07	08:06	09:06	10:08	11:11	12:11	13:11	14:11	15:10	16:15	17:15	18:15	19:06	20:06	20:57	21:57	23:12	
Glynhir Road after Heol-y-cae, Pontarddulais	07:08	08:07	09:07	10:09	11:12	12:12	13:12	14:12	15:11	16:16	17:16	18:16	19:07	20:07	20:58	21:58	23:13	
Pontarddulais, o/s 124 Glynhir Road	07:09	08:08	09:08	10:09	11:12	12:12	13:12	14:12	15:12	16:17	17:17	18:17	19:08	20:08	20:59	21:59	23:14	
Glynhir Road at Glanffrwd Square, Pentrebach	07:09	08:08	09:08	10:10	11:13	12:13	13:13	14:13	15:12	16:17	17:17	18:17	19:08	20:08	20:59	21:59	23:14	
Pontarddulais, o/s 125 Glynhir Road	07:10	08:09	09:09	10:11	11:14	12:14	13:14	14:14	15:13	16:18	17:18	18:18	19:09	20:09	21:00	22:00	23:15	
Glynhir Road before Heol-y-Cae, Pontarddulais	07:10	08:09	09:09	10:12	11:15	12:15	13:15	14:15	15:14	16:19	17:19	18:19	19:10	20:09	21:00	22:00	23:15	
Glynhir Road after Cae-Gwyn Road, Pontarddulais	07:11	08:10	09:10	10:12	11:15	12:15	13:15	14:15	15:15	16:20	17:20	18:19	19:10	20:10	21:01	22:01	23:16	
Caecerrig Road after Upper Mill Road, Pontarddulais	07:12	08:11	09:11	10:13	11:16	12:16	13:16	14:16	15:15	16:20	17:20	18:20	19:11	20:11	21:02	22:02	23:17	
Pontarddulais, o/s The Hollies	07:12	08:11	09:11	10:14	11:17	12:17	13:17	14:17	15:16	16:21	17:21	18:21	19:12	20:11	21:02	22:02	23:17	
Pontarddulais, o/s former Pontarddulais Post Office	07:13	08:12	09:12	10:15	11:18	12:18	13:18	14:18	15:17	16:22	17:22	18:22	19:13	20:12	21:03	22:03	23:18	
Pontarddulais, opp 77 St Teilo Street	07:14	08:13	09:13	10:16	11:19	12:19	13:19	14:19	15:19	16:24	17:24	18:23	19:14	20:13	21:04	22:04	23:19	
Water Street at Pontarddulais Bus Station Stand 1, Pontarddulais	arr	07:15	08:14	09:14	10:17	11:20	12:20	13:20	14:20	15:20	16:25	17:25	18:24	19:15	20:14	21:05	22:05	23:20

Compiled from data for the period Tue 03-Sep-2024 to Mon 09-Sep-2024. Times not in bold are estimated by using the distance between the stops.

Sundays

West Way at Swansea Bus Station Stand S, Swansea	dep	09:20	11:35	13:40	16:00	17:55
Princess Way at St Mary's Church A, Swansea		09:21	11:36	13:41	16:01	17:56
High Street at High Street 3, Swansea		09:24	11:39	13:44	16:04	17:59
Swansea, opp High Street Station		09:26	11:41	13:46	16:06	18:01
High Street at Dyfatty, Hafod		09:26	11:41	13:46	16:06	18:01
Carmarthen Road before Zoar Chapel, Waun Wer		09:28	11:43	13:48	16:08	18:03
Waun Wen, nr Waun Wen Inn		09:29	11:44	13:49	16:09	18:04
Gors Avenue before Jack in the Box, Mayhil		09:30	11:45	13:50	16:10	18:05
Gors Avenue after Mayhill Turn, Mayhill		09:31	11:46	13:51	16:11	18:06
Mayhill, opp 49 Gors Avenue End		09:31	11:46	13:51	16:11	18:06
Gors Avenue after Dewi Terrace, Mayhill		09:32	11:47	13:52	16:12	18:07
Gors Avenue before Gwent Road, Townhill		09:33	11:48	13:53	16:13	18:08
Gors Avenue after Gors Avenue Shops, Townhill		09:34	11:49	13:54	16:14	18:09
Gors Avenue before Heol-y-Gors, Townhill		09:34	11:50	13:55	16:15	18:09
Cockett, o/s Gors Primary School		09:36	11:51	13:56	16:16	18:11
Cockett Road after Fry's Corner, Cockett		09:36	11:52	13:57	16:17	18:11
Cockett, opp St Peter's Church		09:37	11:53	13:58	16:18	18:12
Cockett, nr former Station		09:38	11:54	13:59	16:19	18:13
Cockett, opp 93 Cwmbach Road		09:38	11:54	13:59	16:19	18:13
Waunarwydd, opp 352 Woodlands		09:40	11:56	14:01	16:21	18:15
Cwmbach Road after Gypsy Cross, Waunarwydd		09:41	11:57	14:02	16:22	18:16
Waunarwydd, opp Village Inn		09:42	11:57	14:02	16:22	18:17
Waunarwydd, o/s 27 Caer-gynydd Road Upper		09:43	11:58	14:03	16:23	18:18
Waunarwydd, o/s 88 Caer-gynydd Road Middle		09:44	11:59	14:04	16:24	18:19
Waunarwydd, o/s 140 Caer-gynydd Road Lower		09:45	12:00	14:05	16:25	18:20
Bryn Road before Westwinds Close, Waunarwydd		09:45	12:00	14:05	16:25	18:20
Bryn Road before Bryn Garage, Waunarwydd		09:47	12:01	14:06	16:26	18:21
Swansea Road before Derwen Close, Waunarwydd		09:47	12:02	14:07	16:27	18:22
Waunarwydd, opp 151 Bishwell Park		09:48	12:03	14:08	16:27	18:23
Gowerton, o/s 94 Gorwydd Road		09:49	12:04	14:08	16:28	18:23
Gowerton, nr former Gowerton Police Station		09:50	12:05	14:09	16:29	18:24
Gowerton, o/s CK's		09:51	12:05	14:10	16:30	18:25
Hill Street after 1 Hill Street, Gowerton		09:52	12:07	14:11	16:31	18:26
Gowerton, nr Ffos Felen		09:53		14:12		18:27
Bryn-y-mor Road before Ffordd Alltwen, Gowerton		09:53		14:12		18:27
Gowerton, nr Banc-y-cwm		09:54		14:13		18:29
Gowerton, opp Halfway House		09:55		14:14		18:30
Penclawdd, o/s Berthlwyd Inn		09:56		14:15		18:31
Gowerton Road before Waun-y-felin, Penclawdd		09:57		14:16		18:32
Gowerton Road after Abercedy, Penclawdd		09:58		14:17		18:33
Hendy Road in Hendy Road, Parc-hendy	arr	09:59		14:18		18:34

Compiled from data for the period Tue 03-Sep-2024 to Mon 09-Sep-2024. Times not in bold are estimated by using the distance between the stops.

Appendix B Site Layout



the environmental
dimension partnership

Registered office: 01285 740427 - www.edp-uk.co.uk - info@edp-uk.co.uk

date **03 SEPTEMBER 2024**
drawing number **edp7068_d019f**
scale **1:1,000 @ A3**
drawn by **OSh**
checked **PDa**
QA

client **Pobl Housing**
project title **Gwynfaen 2**
drawing title **Planning Layout**

DRAFT

Appendix C Visibility Splay



DO NOT SCALE

KEY	
	SITE BOUNDARY
	EXISTING WATERCOURSE
	ROAD CENTRELINE
	FORWARD VISIBILITY (2.4m x 25m)
	JUNCTION VISIBILITY (2.4m x 25m)
	RETAINING STRUCTURE
	RETAINING STRUCTURE (UNDER 600mm)
	UNDERBUILD
	GRADIENT (MINUS DOWNHILL)
	FINISHED FLOOR LEVEL
	DQR PARKING BAY
	DQR ACCESS ROUTE

NOTES:

- DRAWING TO BE READ IN CONJUNCTION WITH ALL OTHER RELEVANT PROJECT DRAWINGS AND SPECIFICATIONS
- ALL FIGURED LEVELS ARE IN METRES AND RELATED TO EXISTING SURVEY GRID & DATUM UNLESS NOTED OTHERWISE
- ALL FIGURED DIMENSIONS ARE IN METRES UNLESS NOTED OTHERWISE, DIMENSION ARE NOT TO BE SCALED.
- APPROXIMATE MIDDLE OF SITE INFORMATION
 - GRID REFERENCE: S5 57783 99330
 - X (EASTING) 257783, Y (NORTHING) 199330
 - What3Words: pass.clever.decanter



REVISIONS

Rev.	General Update	xx/xx/xx	AS	ML ML
P02	General Update	01/07/24	AS	ML ML
P01	FIRST ISSUE		AS	ML ML

Hydrock
now
Stantec

Third Floor, Wharton Place
13 Wharton Street
Cardiff
CF10 1GS
t: +44(0)2920 023665
e: cardiff@hydrock.com

CLIENT

POBL GROUP

PROJECT

RESIDENTIAL DEVELOPMENT AT GWYNFAEN (PHASE 2)

TITLE

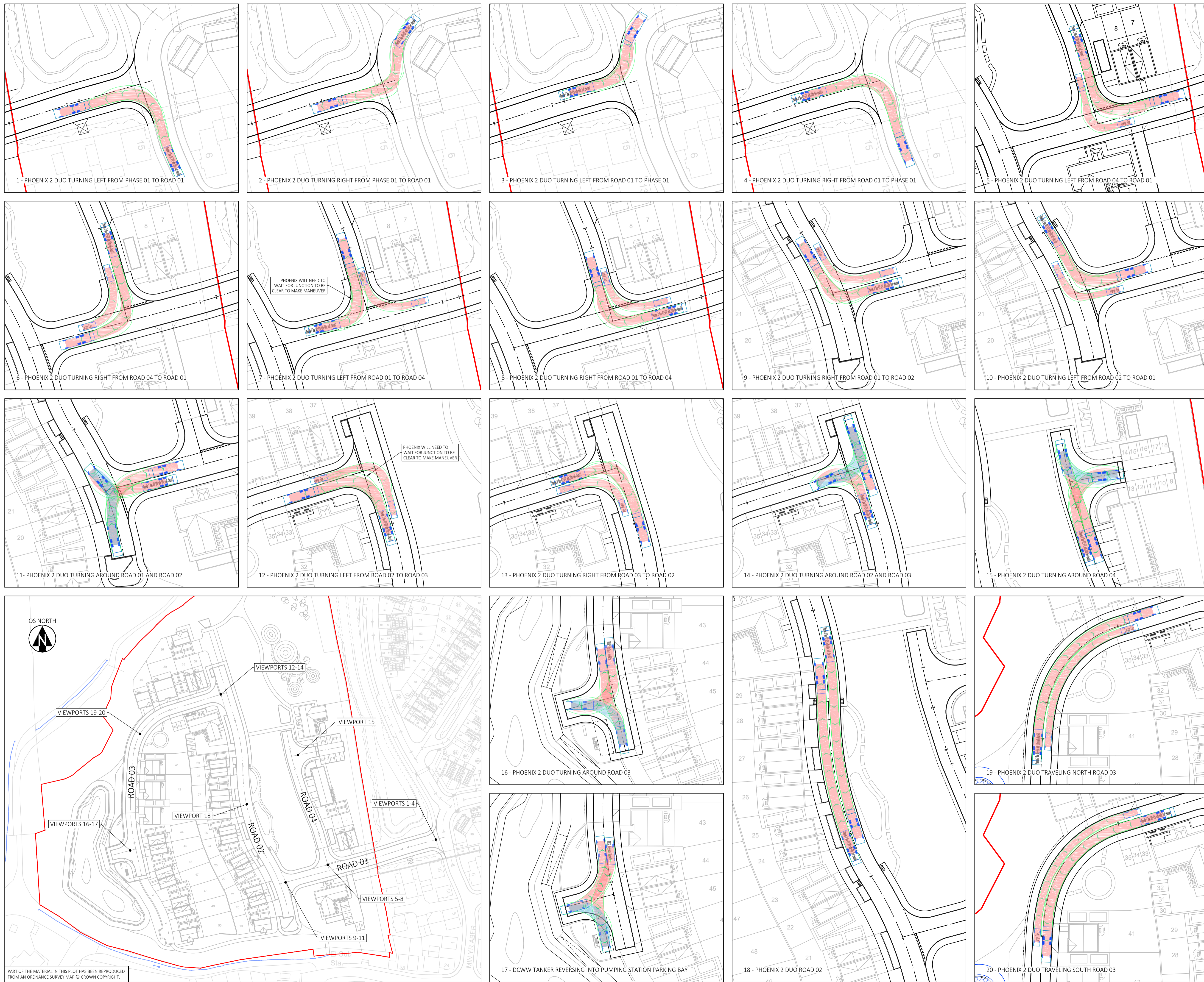
GENERAL ARRANGEMENT PLAN OVERALL SITE

HYDROCK PROJECT NO.	SCALE @ A1	
C-21883	1:500	
STATUS DESCRIPTION		STATUS
SUITABLE FOR INFORMATION		S2
DRAWING NO.		REVISION
21883-HYD-XX-XX-DR-C-1000		P02.1

Gwyn-faen

PART OF THE MATERIAL IN THIS PLOT HAS BEEN REPRODUCED FROM AN ORDNANCE SURVEY MAP © CROWN COPYRIGHT.

Appendix D Swept Path Analysis



DO NOT SCALE

KEY

- VEHICLE CHASSIS OUTLINE
- VEHICLE BODY OUTLINE
- AREA OF SWEEP WHEEL TRACKS, FORWARD MOVEMENT, DESIGN SPEED 5kph
- AREA OF SWEEP WHEEL TRACKS, REVERSE MOVEMENT, DESIGN SPEED 5kph
- SITE BOUNDARY

- NOTES:**
1. DRAWING TO BE READ IN CONJUNCTION WITH ALL OTHER RELEVANT PROJECT DRAWINGS AND SPECIFICATIONS
 2. ALL FIGURED LEVELS ARE IN METRES AND RELATED TO EXISTING SURVEY GRID & DATUM UNLESS NOTED OTHERWISE
 3. ALL FIGURED DIMENSIONS ARE IN METRES UNLESS NOTED OTHERWISE, DIMENSION ARE NOT TO BE SCALED.
 4. APPROXIMATE MIDDLE OF SITE INFORMATION
 - 4.1. GRID REFERENCE: SS 57783 99330
 - 4.2. X (EASTING) 257783, Y (NORTHING) 199330
 - 4.3. What3Words: pass.clever.decanter

Phoenix 2 Duo Recycler (P2-12W with Elite 6x4 chassis)	Large Car
Overall Length: 10.320m	Overall Length: 4.988m
Overall Width: 2.530m	Overall Width: 1.793m
Overall Body Height: 3.756m	Overall Body Height: 1.502m
Min Body Ground Clearance: 0.309m	Min Body Ground Clearance: 0.287m
Track Width: 2.530m	Track Width: 1.700m
Lock to lock time: 4.00s	Lock to lock time: 4.00s
Kerb to Kerb Turning Radius: 9.450m	Kerb to Kerb Turning Radius: 6.200m

FTA Design 1318 Tonne Rigid Vehicle (1999) Modified for DCWW	Large Car
Overall Length: 9.220m	Overall Length: 4.988m
Overall Width: 2.540m	Overall Width: 1.793m
Overall Body Height: 3.645m Min	Overall Body Height: 1.502m
Body Ground Clearance: 0.446m	Min Body Ground Clearance: 0.287m
Track Width: 2.470m	Track Width: 1.700m
Lock to lock time: 3.00s	Lock to lock time: 4.00s
Kerb to Kerb Turning Radius: 11.000m	Kerb to Kerb Turning Radius: 6.200m

REVISIONS

Rev	First Issue	Revision Notes	Date	AS	ML	ML
P01	First Issue		01/07/24	AS	ML	ML

Hydrock
now **Stantec**

Third Floor, Wharton Place
13 Wharton Street
Cardiff
CF10 1GS
t: +44(0)2920 023665
e: cardiff@hydrock.com

CLIENT
POBL HOMES AND COMMUNITIES

PROJECT
RESIDENTIAL DEVELOPMENT AT GWYNFAEN (PHASE 2)

TITLE
VEHICLE TRACKING

HYDROCK PROJECT NO. C-21883	SCALE @ A1 NTS	STATUS S2
STATUS DESCRIPTION SUITABLE FOR INFORMATION		REVISION P01
DRAWING NO. 21883-HYD-XX-XX-DR-C-1301		

File name: Y:\21000\21990\21883 - Land at Gwynfaen Farm, Phase 2\01 - WPD\01 - Drawing\02\1883-HYD-XX-XX-DR-C-1301-Vehicle Tracking.dwg

PART OF THE MATERIAL IN THIS PLOT HAS BEEN REPRODUCED FROM AN ORDNANCE SURVEY MAP © CROWN COPYRIGHT.

Appendix E TRICS Output

TRIP RATE CALCULATION SELECTION PARAMETERS:

Land Use : 03 - RESIDENTIAL
Category : M - MIXED PRIVATE/AFFORDABLE HOUSING
MULTI-MODAL TOTAL VEHICLES

Selected regions and areas:

02	SOUTH EAST	
	BH BRIGHTON & HOVE	1 days
	BU BUCKINGHAMSHIRE	1 days
	CT CENTRAL BEDFORDSHIRE	1 days
	ES EAST SUSSEX	4 days
	HC HAMPSHIRE	2 days
	HF HERTFORDSHIRE	1 days
	KC KENT	2 days
	MW MEDWAY	1 days
	OX OXFORDSHIRE	1 days
	SC SURREY	2 days
	SP SOUTHAMPTON	1 days
	WS WEST SUSSEX	2 days
03	SOUTH WEST	
	DV DEVON	1 days
04	EAST ANGLIA	
	CA CAMBRIDGESHIRE	1 days
	NF NORFOLK	10 days
06	WEST MIDLANDS	
	WK WARWICKSHIRE	2 days

This section displays the number of survey days per TRICS® sub-region in the selected set

Primary Filtering selection:

This data displays the chosen trip rate parameter and its selected range. Only sites that fall within the parameter range are included in the trip rate calculation.

Parameter: No of Dwellings
Actual Range: 43 to 395 (units:)
Range Selected by User: 9 to 1412 (units:)

Parking Spaces Range: All Surveys Included

Parking Spaces per Dwelling Range: All Surveys Included

Bedrooms per Dwelling Range: All Surveys Included

Percentage of dwellings privately owned: All Surveys Included

Public Transport Provision:

Selection by: Include all surveys

Date Range: 01/01/16 to 05/03/24

This data displays the range of survey dates selected. Only surveys that were conducted within this date range are included in the trip rate calculation.

Selected survey days:

Monday	2 days
Tuesday	3 days
Wednesday	15 days
Thursday	10 days
Friday	3 days

This data displays the number of selected surveys by day of the week.

Selected survey types:

Manual count	33 days
Directional ATC Count	0 days

This data displays the number of manual classified surveys and the number of unclassified ATC surveys, the total adding up to the overall number of surveys in the selected set. Manual surveys are undertaken using staff, whilst ATC surveys are undertaken using machines.

Selected Locations:

Edge of Town	33
--------------	----

This data displays the number of surveys per main location category within the selected set. The main location categories consist of Free Standing, Edge of Town, Suburban Area, Neighbourhood Centre, Edge of Town Centre, Town Centre and Not Known.

Selected Location Sub Categories:

Industrial Zone	1
Residential Zone	27
Out of Town	3
No Sub Category	2

This data displays the number of surveys per location sub-category within the selected set. The location sub-categories consist of Commercial Zone, Industrial Zone, Development Zone, Residential Zone, Retail Zone, Built-Up Zone, Village, Out of Town, High Street and No Sub Category.

Inclusion of Servicing Vehicles Counts:

Servicing vehicles Included	21 days - Selected
Servicing vehicles Excluded	32 days - Selected

Secondary Filtering selection:

Use Class:

C3	33 days
----	---------

This data displays the number of surveys per Use Class classification within the selected set. The Use Classes Order (England) 2020 has been used for this purpose, which can be found within the Library module of TRICS@.

Population within 500m Range:

All Surveys Included

Secondary Filtering selection (Cont.):

Population within 1 mile:

1,001 to 5,000	7 days
5,001 to 10,000	13 days
10,001 to 15,000	8 days
15,001 to 20,000	2 days
20,001 to 25,000	1 days
25,001 to 50,000	2 days

This data displays the number of selected surveys within stated 1-mile radii of population.

Population within 5 miles:

5,001 to 25,000	6 days
25,001 to 50,000	7 days
50,001 to 75,000	6 days
75,001 to 100,000	2 days
125,001 to 250,000	8 days
250,001 to 500,000	4 days

This data displays the number of selected surveys within stated 5-mile radii of population.

Car ownership within 5 miles:

0.6 to 1.0	3 days
1.1 to 1.5	28 days
1.6 to 2.0	2 days

This data displays the number of selected surveys within stated ranges of average cars owned per residential dwelling, within a radius of 5-miles of selected survey sites.

Travel Plan:

Yes	29 days
No	4 days

This data displays the number of surveys within the selected set that were undertaken at sites with Travel Plans in place, and the number of surveys that were undertaken at sites without Travel Plans.

PTAL Rating:

No PTAL Present	33 days
-----------------	---------

This data displays the number of selected surveys with PTAL Ratings.

Covid-19 Restrictions	Yes	At least one survey within the selected data set was undertaken at a time of Covid-19 restrictions
-----------------------	-----	----------------------------------------------------------------------------------------------------

LIST OF SITES relevant to selection parameters

1	BH-03-M-01 OVERDOWN RISE PORTSLADE	MIXED HOUSES & FLATS		BRIGHTON & HOVE
	Edge of Town Residential Zone Total No of Dwellings:		125	
	<i>Survey date: THURSDAY</i>		<i>09/03/23</i>	<i>Survey Type: MANUAL</i>
2	BU-03-M-01 WYETH CLOSE TAPLOW	BLOCK OF FLATS		BUCKINGHAMSHIRE
	Edge of Town Residential Zone Total No of Dwellings:		60	
	<i>Survey date: WEDNESDAY</i>		<i>06/09/23</i>	<i>Survey Type: MANUAL</i>
3	CA-03-M-01 BANNOLD ROAD WATERBEACH	MIXED HOUSES & FLATS		CAMBRIDGESHIRE
	Edge of Town Residential Zone Total No of Dwellings:		52	
	<i>Survey date: WEDNESDAY</i>		<i>20/06/18</i>	<i>Survey Type: MANUAL</i>
4	CT-03-M-01 HITCHIN ROAD SHEFFORD	MIXED HOUSES & FLATS		CENTRAL BEDFORDSHIRE
	Edge of Town Residential Zone Total No of Dwellings:		75	
	<i>Survey date: WEDNESDAY</i>		<i>28/06/23</i>	<i>Survey Type: MANUAL</i>
5	DV-03-M-02 SAINT PETER' SQUAY TOTNES	MIXED HOUSES & FLATS		DEVON
	Edge of Town Residential Zone Total No of Dwellings:		90	
	<i>Survey date: FRIDAY</i>		<i>29/03/19</i>	<i>Survey Type: MANUAL</i>
6	ES-03-M-10 DITTONS ROAD POLEGATE	MIXED HOUSES & FLATS		EAST SUSSEX
	Edge of Town Residential Zone Total No of Dwellings:		108	
	<i>Survey date: MONDAY</i>		<i>11/07/16</i>	<i>Survey Type: MANUAL</i>
7	ES-03-M-14 KINGS DRIVE EASTBOURNE UPPERTON	MIXED HOUSES & FLATS		EAST SUSSEX
	Edge of Town Residential Zone Total No of Dwellings:		119	
	<i>Survey date: THURSDAY</i>		<i>15/11/18</i>	<i>Survey Type: MANUAL</i>
8	ES-03-M-15 FIELD END MARESFIELD	MIXED HOUSES		EAST SUSSEX
	Edge of Town Residential Zone Total No of Dwellings:		80	
	<i>Survey date: WEDNESDAY</i>		<i>13/03/19</i>	<i>Survey Type: MANUAL</i>

LIST OF SITES relevant to selection parameters (Cont.)

17	NF-03-M-03	MIXED HOUSES	NORFOLK
	NORTH WALSHAM ROAD NORTH WALSHAM		
	Edge of Town Residential Zone		
	Total No of Dwellings:	70	
	Survey date: WEDNESDAY	18/09/19	Survey Type: MANUAL
18	NF-03-M-04	MIXED HOUSES & FLATS	NORFOLK
	HUNSTANTON ROAD HUNSTANTON		
	Edge of Town Residential Zone		
	Total No of Dwellings:	70	
	Survey date: THURSDAY	19/09/19	Survey Type: MANUAL
19	NF-03-M-14	MIXED HOUSES & FLATS	NORFOLK
	NORWICH COMMON WYMONDHAM		
	Edge of Town Residential Zone		
	Total No of Dwellings:	321	
	Survey date: THURSDAY	19/09/19	Survey Type: MANUAL
20	NF-03-M-39	MIXED HOUSES	NORFOLK
	LONDON ROAD ATTLEBOROUGH		
	Edge of Town Residential Zone		
	Total No of Dwellings:	61	
	Survey date: WEDNESDAY	14/10/20	Survey Type: MANUAL
21	NF-03-M-46	MIXED HOUSES & FLATS	NORFOLK
	DEREHAM ROAD NORWICH		
	Edge of Town No Sub Category		
	Total No of Dwellings:	338	
	Survey date: WEDNESDAY	15/09/21	Survey Type: MANUAL
22	NF-03-M-51	MIXED HOUSES	NORFOLK
	MENDHAM LANE HARLESTON		
	Edge of Town Residential Zone		
	Total No of Dwellings:	120	
	Survey date: WEDNESDAY	29/09/21	Survey Type: MANUAL
23	NF-03-M-59	MIXED HOUSES	NORFOLK
	NORWICH COMMON WYMONDHAM		
	Edge of Town Residential Zone		
	Total No of Dwellings:	153	
	Survey date: THURSDAY	29/09/22	Survey Type: MANUAL

LIST OF SITES relevant to selection parameters (Cont.)

24	NF-03-M-62 CAWSTON ROAD AYLSHAM	MIXED HOUSES		NORFOLK
	Edge of Town Out of Town Total No of Dwellings:		250	
	<i>Survey date: WEDNESDAY</i>		<i>21/09/22</i>	<i>Survey Type: MANUAL</i>
25	NF-03-M-63 NORTH WALSHAM ROAD NORTH WALSHAM	MIXED HOUSES		NORFOLK
	Edge of Town Residential Zone Total No of Dwellings:		100	
	<i>Survey date: WEDNESDAY</i>		<i>21/09/22</i>	<i>Survey Type: MANUAL</i>
26	OX-03-M-01 WENMAN ROAD THAME	MIXED HOUSES		OXFORDSHIRE
	Edge of Town Industrial Zone Total No of Dwellings:		100	
	<i>Survey date: THURSDAY</i>		<i>28/06/18</i>	<i>Survey Type: MANUAL</i>
27	SC-03-M-10 AARONS HILL GODALMING	MIXED HOUSES & FLATS		SURREY
	Edge of Town Residential Zone Total No of Dwellings:		108	
	<i>Survey date: THURSDAY</i>		<i>09/06/22</i>	<i>Survey Type: MANUAL</i>
28	SC-03-M-13 HOLLAND ROAD OXTED	DETACHED HOUSES & FLATS		SURREY
	Edge of Town Residential Zone Total No of Dwellings:		168	
	<i>Survey date: TUESDAY</i>		<i>22/11/22</i>	<i>Survey Type: MANUAL</i>
29	SP-03-M-02 BARNFIELD WAY NEAR SOUTHAMPTON HEDGE END	MIXED HOUSES & FLATS		SOUTHAMPTON
	Edge of Town Out of Town Total No of Dwellings:		181	
	<i>Survey date: WEDNESDAY</i>		<i>23/10/19</i>	<i>Survey Type: MANUAL</i>
30	WK-03-M-01 BIRMINGHAM ROAD STRATFORD UPON AVON	MIXED HOUSES & FLATS		WARWICKSHIRE
	Edge of Town Residential Zone Total No of Dwellings:		395	
	<i>Survey date: FRIDAY</i>		<i>29/06/18</i>	<i>Survey Type: MANUAL</i>

LIST OF SITES relevant to selection parameters (Cont.)

31	WK-03-M-02	MIXED HOUSES	WARWICKSHIRE
	BISHOPTON LANE STRATFORD UPON AVON BISHOPTON Edge of Town Residential Zone Total No of Dwellings: 130 <i>Survey date: FRIDAY 29/06/18</i>		
			<i>Survey Type: MANUAL</i>
32	WS-03-M-22	MIXED HOUSES & FLATS	WEST SUSSEX
	RUSPER ROAD CRAWLEY IFIELD Edge of Town Residential Zone Total No of Dwellings: 91 <i>Survey date: MONDAY 19/10/20</i>		
			<i>Survey Type: MANUAL</i>
33	WS-03-M-25	MIXED HOUSES	WEST SUSSEX
	CLAPPERS LANE BRACKLESHAM BAY Edge of Town Residential Zone Total No of Dwellings: 110 <i>Survey date: WEDNESDAY 24/11/21</i>		
			<i>Survey Type: MANUAL</i>

This section provides a list of all survey sites and days in the selected set. For each individual survey site, it displays a unique site reference code and site address, the selected trip rate calculation parameter and its value, the day of the week and date of each survey, and whether the survey was a manual classified count or an ATC count.

MANUALLY DESELECTED SITES

Site Ref	Reason for Deselection
ES-03-M-11	not suitable
ES-03-M-19	not suitable
ES-03-M-21	not suitable
HC-03-M-11	not suitable
HC-03-M-14	not suitable
HC-03-M-15	not suitable
HC-03-M-17	not suitable
HC-03-M-19	not suitable
HC-03-M-20	not suitable

TRIP RATE for Land Use 03 - RESIDENTIAL/M - MIXED PRIVATE/AFFORDABLE HOUSING
MULTI-MODAL TOTAL VEHICLES

Calculation factor: 1 DWELLS

BOLD print indicates peak (busiest) period

Total People to Total Vehicles ratio (all time periods and directions): 1.78

Time Range	ARRIVALS			DEPARTURES			TOTALS		
	No. Days	Ave. DWELLS	Trip Rate	No. Days	Ave. DWELLS	Trip Rate	No. Days	Ave. DWELLS	Trip Rate
00:00 - 01:00									
01:00 - 02:00									
02:00 - 03:00									
03:00 - 04:00									
04:00 - 05:00									
05:00 - 06:00									
06:00 - 07:00									
07:00 - 08:00	33	141	0.075	33	141	0.287	33	141	0.362
08:00 - 09:00	33	141	0.133	33	141	0.351	33	141	0.484
09:00 - 10:00	33	141	0.137	33	141	0.159	33	141	0.296
10:00 - 11:00	33	141	0.117	33	141	0.137	33	141	0.254
11:00 - 12:00	33	141	0.118	33	141	0.134	33	141	0.252
12:00 - 13:00	33	141	0.143	33	141	0.129	33	141	0.272
13:00 - 14:00	33	141	0.140	33	141	0.143	33	141	0.283
14:00 - 15:00	33	141	0.140	33	141	0.177	33	141	0.317
15:00 - 16:00	33	141	0.254	33	141	0.159	33	141	0.413
16:00 - 17:00	33	141	0.268	33	141	0.146	33	141	0.414
17:00 - 18:00	33	141	0.300	33	141	0.158	33	141	0.458
18:00 - 19:00	33	141	0.268	33	141	0.157	33	141	0.425
19:00 - 20:00	1	119	0.126	1	119	0.008	1	119	0.134
20:00 - 21:00	1	119	0.101	1	119	0.017	1	119	0.118
21:00 - 22:00									
22:00 - 23:00									
23:00 - 24:00									
Total Rates:			2.320			2.162			4.482

This section displays the trip rate results based on the selected set of surveys and the selected count type (shown just above the table). It is split by three main columns, representing arrivals trips, departures trips, and total trips (arrivals plus departures). Within each of these main columns are three sub-columns. These display the number of survey days where count data is included (per time period), the average value of the selected trip rate calculation parameter (per time period), and the trip rate result (per time period). Total trip rates (the sum of the column) are also displayed at the foot of the table.

To obtain a trip rate, the average (mean) trip rate parameter value (TRP) is first calculated for all selected survey days that have count data available for the stated time period. The average (mean) number of arrivals, departures or totals (whichever applies) is also calculated (COUNT) for all selected survey days that have count data available for the stated time period. Then, the average count is divided by the average trip rate parameter value, and multiplied by the stated calculation factor (shown just above the table and abbreviated here as FACT). So, the method is: $COUNT/TRP*FACT$. Trip rates are then rounded to 3 decimal places.

The survey data, graphs and all associated supporting information, contained within the TRICS Database are published by TRICS Consortium Limited ("the Company") and the Company claims copyright and database rights in this published work. The Company authorises those who possess a current TRICS licence to access the TRICS Database and copy the data contained within the TRICS Database for the licence holders' use only. Any resulting copy must retain all copyrights and other proprietary notices, and any disclaimer contained thereon.

The Company accepts no responsibility for loss which may arise from reliance on data contained in the TRICS Database. [No warranty of any kind, express or implied, is made as to the data contained in the TRICS Database.]

Parameter summary

Trip rate parameter range selected: 43 - 395 (units:)
Survey date date range: 01/01/16 - 05/03/24
Number of weekdays (Monday-Friday): 33
Number of Saturdays: 0
Number of Sundays: 0
Surveys automatically removed from selection: 11
Surveys manually removed from selection: 9

This section displays a quick summary of some of the data filtering selections made by the TRICS® user. The trip rate calculation parameter range of all selected surveys is displayed first, followed by the range of minimum and maximum survey dates selected by the user. Then, the total number of selected weekdays and weekend days in the selected set of surveys are shown. Finally, the number of survey days that have been manually removed from the selected set outside of the standard filtering procedure are displayed.

TRIP RATE for Land Use 03 - RESIDENTIAL/M - MIXED PRIVATE/AFFORDABLE HOUSING
 MULTI-MODAL TAXIS
 Calculation factor: 1 DWELLS
 BOLD print indicates peak (busiest) period

Time Range	ARRIVALS			DEPARTURES			TOTALS		
	No. Days	Ave. DWELLS	Trip Rate	No. Days	Ave. DWELLS	Trip Rate	No. Days	Ave. DWELLS	Trip Rate
00:00 - 01:00									
01:00 - 02:00									
02:00 - 03:00									
03:00 - 04:00									
04:00 - 05:00									
05:00 - 06:00									
06:00 - 07:00									
07:00 - 08:00	33	141	0.004	33	141	0.004	33	141	0.008
08:00 - 09:00	33	141	0.005	33	141	0.006	33	141	0.011
09:00 - 10:00	33	141	0.002	33	141	0.002	33	141	0.004
10:00 - 11:00	33	141	0.002	33	141	0.002	33	141	0.004
11:00 - 12:00	33	141	0.001	33	141	0.001	33	141	0.002
12:00 - 13:00	33	141	0.001	33	141	0.001	33	141	0.002
13:00 - 14:00	33	141	0.002	33	141	0.002	33	141	0.004
14:00 - 15:00	33	141	0.003	33	141	0.003	33	141	0.006
15:00 - 16:00	33	141	0.005	33	141	0.005	33	141	0.010
16:00 - 17:00	33	141	0.004	33	141	0.002	33	141	0.006
17:00 - 18:00	33	141	0.001	33	141	0.001	33	141	0.002
18:00 - 19:00	33	141	0.002	33	141	0.002	33	141	0.004
19:00 - 20:00	1	119	0.000	1	119	0.000	1	119	0.000
20:00 - 21:00	1	119	0.000	1	119	0.000	1	119	0.000
21:00 - 22:00									
22:00 - 23:00									
23:00 - 24:00									
Total Rates:			0.032			0.031			0.063

This section displays the trip rate results based on the selected set of surveys and the selected count type (shown just above the table). It is split by three main columns, representing arrivals trips, departures trips, and total trips (arrivals plus departures). Within each of these main columns are three sub-columns. These display the number of survey days where count data is included (per time period), the average value of the selected trip rate calculation parameter (per time period), and the trip rate result (per time period). Total trip rates (the sum of the column) are also displayed at the foot of the table.

*To obtain a trip rate, the average (mean) trip rate parameter value (TRP) is first calculated for all selected survey days that have count data available for the stated time period. The average (mean) number of arrivals, departures or totals (whichever applies) is also calculated (COUNT) for all selected survey days that have count data available for the stated time period. Then, the average count is divided by the average trip rate parameter value, and multiplied by the stated calculation factor (shown just above the table and abbreviated here as FACT). So, the method is: COUNT/TRP*FACT. Trip rates are then rounded to 3 decimal places.*

TRIP RATE for Land Use 03 - RESIDENTIAL/M - MIXED PRIVATE/AFFORDABLE HOUSING
 MULTI-MODAL OGVS
 Calculation factor: 1 DWELLS
 BOLD print indicates peak (busiest) period

Time Range	ARRIVALS			DEPARTURES			TOTALS		
	No. Days	Ave. DWELLS	Trip Rate	No. Days	Ave. DWELLS	Trip Rate	No. Days	Ave. DWELLS	Trip Rate
00:00 - 01:00									
01:00 - 02:00									
02:00 - 03:00									
03:00 - 04:00									
04:00 - 05:00									
05:00 - 06:00									
06:00 - 07:00									
07:00 - 08:00	33	141	0.001	33	141	0.001	33	141	0.002
08:00 - 09:00	33	141	0.002	33	141	0.001	33	141	0.003
09:00 - 10:00	33	141	0.002	33	141	0.003	33	141	0.005
10:00 - 11:00	33	141	0.002	33	141	0.002	33	141	0.004
11:00 - 12:00	33	141	0.002	33	141	0.002	33	141	0.004
12:00 - 13:00	33	141	0.001	33	141	0.001	33	141	0.002
13:00 - 14:00	33	141	0.001	33	141	0.002	33	141	0.003
14:00 - 15:00	33	141	0.001	33	141	0.001	33	141	0.002
15:00 - 16:00	33	141	0.001	33	141	0.001	33	141	0.002
16:00 - 17:00	33	141	0.000	33	141	0.000	33	141	0.000
17:00 - 18:00	33	141	0.000	33	141	0.000	33	141	0.000
18:00 - 19:00	33	141	0.000	33	141	0.000	33	141	0.000
19:00 - 20:00	1	119	0.000	1	119	0.000	1	119	0.000
20:00 - 21:00	1	119	0.000	1	119	0.000	1	119	0.000
21:00 - 22:00									
22:00 - 23:00									
23:00 - 24:00									
Total Rates:			0.013			0.014			0.027

This section displays the trip rate results based on the selected set of surveys and the selected count type (shown just above the table). It is split by three main columns, representing arrivals trips, departures trips, and total trips (arrivals plus departures). Within each of these main columns are three sub-columns. These display the number of survey days where count data is included (per time period), the average value of the selected trip rate calculation parameter (per time period), and the trip rate result (per time period). Total trip rates (the sum of the column) are also displayed at the foot of the table.

*To obtain a trip rate, the average (mean) trip rate parameter value (TRP) is first calculated for all selected survey days that have count data available for the stated time period. The average (mean) number of arrivals, departures or totals (whichever applies) is also calculated (COUNT) for all selected survey days that have count data available for the stated time period. Then, the average count is divided by the average trip rate parameter value, and multiplied by the stated calculation factor (shown just above the table and abbreviated here as FACT). So, the method is: COUNT/TRP*FACT. Trip rates are then rounded to 3 decimal places.*

TRIP RATE for Land Use 03 - RESIDENTIAL/M - MIXED PRIVATE/AFFORDABLE HOUSING
 MULTI-MODAL PSVS
 Calculation factor: 1 DWELLS
 BOLD print indicates peak (busiest) period

Time Range	ARRIVALS			DEPARTURES			TOTALS		
	No. Days	Ave. DWELLS	Trip Rate	No. Days	Ave. DWELLS	Trip Rate	No. Days	Ave. DWELLS	Trip Rate
00:00 - 01:00									
01:00 - 02:00									
02:00 - 03:00									
03:00 - 04:00									
04:00 - 05:00									
05:00 - 06:00									
06:00 - 07:00									
07:00 - 08:00	33	141	0.001	33	141	0.001	33	141	0.002
08:00 - 09:00	33	141	0.001	33	141	0.001	33	141	0.002
09:00 - 10:00	33	141	0.000	33	141	0.000	33	141	0.000
10:00 - 11:00	33	141	0.000	33	141	0.000	33	141	0.000
11:00 - 12:00	33	141	0.000	33	141	0.000	33	141	0.000
12:00 - 13:00	33	141	0.000	33	141	0.000	33	141	0.000
13:00 - 14:00	33	141	0.000	33	141	0.000	33	141	0.000
14:00 - 15:00	33	141	0.000	33	141	0.000	33	141	0.000
15:00 - 16:00	33	141	0.001	33	141	0.001	33	141	0.002
16:00 - 17:00	33	141	0.000	33	141	0.001	33	141	0.001
17:00 - 18:00	33	141	0.000	33	141	0.000	33	141	0.000
18:00 - 19:00	33	141	0.000	33	141	0.000	33	141	0.000
19:00 - 20:00	1	119	0.000	1	119	0.000	1	119	0.000
20:00 - 21:00	1	119	0.000	1	119	0.000	1	119	0.000
21:00 - 22:00									
22:00 - 23:00									
23:00 - 24:00									
Total Rates:			0.003			0.004			0.007

This section displays the trip rate results based on the selected set of surveys and the selected count type (shown just above the table). It is split by three main columns, representing arrivals trips, departures trips, and total trips (arrivals plus departures). Within each of these main columns are three sub-columns. These display the number of survey days where count data is included (per time period), the average value of the selected trip rate calculation parameter (per time period), and the trip rate result (per time period). Total trip rates (the sum of the column) are also displayed at the foot of the table.

*To obtain a trip rate, the average (mean) trip rate parameter value (TRP) is first calculated for all selected survey days that have count data available for the stated time period. The average (mean) number of arrivals, departures or totals (whichever applies) is also calculated (COUNT) for all selected survey days that have count data available for the stated time period. Then, the average count is divided by the average trip rate parameter value, and multiplied by the stated calculation factor (shown just above the table and abbreviated here as FACT). So, the method is: COUNT/TRP*FACT. Trip rates are then rounded to 3 decimal places.*

TRIP RATE for Land Use 03 - RESIDENTIAL/M - MIXED PRIVATE/AFFORDABLE HOUSING
 MULTI-MODAL CYCLISTS
 Calculation factor: 1 DWELLS
 BOLD print indicates peak (busiest) period

Time Range	ARRIVALS			DEPARTURES			TOTALS		
	No. Days	Ave. DWELLS	Trip Rate	No. Days	Ave. DWELLS	Trip Rate	No. Days	Ave. DWELLS	Trip Rate
00:00 - 01:00									
01:00 - 02:00									
02:00 - 03:00									
03:00 - 04:00									
04:00 - 05:00									
05:00 - 06:00									
06:00 - 07:00									
07:00 - 08:00	33	141	0.002	33	141	0.010	33	141	0.012
08:00 - 09:00	33	141	0.002	33	141	0.014	33	141	0.016
09:00 - 10:00	33	141	0.002	33	141	0.003	33	141	0.005
10:00 - 11:00	33	141	0.003	33	141	0.004	33	141	0.007
11:00 - 12:00	33	141	0.002	33	141	0.003	33	141	0.005
12:00 - 13:00	33	141	0.002	33	141	0.003	33	141	0.005
13:00 - 14:00	33	141	0.003	33	141	0.002	33	141	0.005
14:00 - 15:00	33	141	0.004	33	141	0.004	33	141	0.008
15:00 - 16:00	33	141	0.013	33	141	0.005	33	141	0.018
16:00 - 17:00	33	141	0.007	33	141	0.005	33	141	0.012
17:00 - 18:00	33	141	0.009	33	141	0.004	33	141	0.013
18:00 - 19:00	33	141	0.009	33	141	0.005	33	141	0.014
19:00 - 20:00	1	119	0.000	1	119	0.000	1	119	0.000
20:00 - 21:00	1	119	0.000	1	119	0.000	1	119	0.000
21:00 - 22:00									
22:00 - 23:00									
23:00 - 24:00									
Total Rates:			0.058			0.062			0.120

This section displays the trip rate results based on the selected set of surveys and the selected count type (shown just above the table). It is split by three main columns, representing arrivals trips, departures trips, and total trips (arrivals plus departures). Within each of these main columns are three sub-columns. These display the number of survey days where count data is included (per time period), the average value of the selected trip rate calculation parameter (per time period), and the trip rate result (per time period). Total trip rates (the sum of the column) are also displayed at the foot of the table.

*To obtain a trip rate, the average (mean) trip rate parameter value (TRP) is first calculated for all selected survey days that have count data available for the stated time period. The average (mean) number of arrivals, departures or totals (whichever applies) is also calculated (COUNT) for all selected survey days that have count data available for the stated time period. Then, the average count is divided by the average trip rate parameter value, and multiplied by the stated calculation factor (shown just above the table and abbreviated here as FACT). So, the method is: COUNT/TRP*FACT. Trip rates are then rounded to 3 decimal places.*

TRIP RATE for Land Use 03 - RESIDENTIAL/M - MIXED PRIVATE/AFFORDABLE HOUSING
 MULTI-MODAL VEHICLE OCCUPANTS
 Calculation factor: 1 DWELLS
 BOLD print indicates peak (busiest) period

Time Range	ARRIVALS			DEPARTURES			TOTALS		
	No. Days	Ave. DWELLS	Trip Rate	No. Days	Ave. DWELLS	Trip Rate	No. Days	Ave. DWELLS	Trip Rate
00:00 - 01:00									
01:00 - 02:00									
02:00 - 03:00									
03:00 - 04:00									
04:00 - 05:00									
05:00 - 06:00									
06:00 - 07:00									
07:00 - 08:00	33	141	0.087	33	141	0.428	33	141	0.515
08:00 - 09:00	33	141	0.164	33	141	0.609	33	141	0.773
09:00 - 10:00	33	141	0.170	33	141	0.235	33	141	0.405
10:00 - 11:00	33	141	0.150	33	141	0.199	33	141	0.349
11:00 - 12:00	33	141	0.155	33	141	0.185	33	141	0.340
12:00 - 13:00	33	141	0.195	33	141	0.176	33	141	0.371
13:00 - 14:00	33	141	0.198	33	141	0.197	33	141	0.395
14:00 - 15:00	33	141	0.192	33	141	0.229	33	141	0.421
15:00 - 16:00	33	141	0.447	33	141	0.216	33	141	0.663
16:00 - 17:00	33	141	0.416	33	141	0.217	33	141	0.633
17:00 - 18:00	33	141	0.462	33	141	0.235	33	141	0.697
18:00 - 19:00	33	141	0.413	33	141	0.229	33	141	0.642
19:00 - 20:00	1	119	0.168	1	119	0.017	1	119	0.185
20:00 - 21:00	1	119	0.151	1	119	0.017	1	119	0.168
21:00 - 22:00									
22:00 - 23:00									
23:00 - 24:00									
Total Rates:			3.368			3.189			6.557

This section displays the trip rate results based on the selected set of surveys and the selected count type (shown just above the table). It is split by three main columns, representing arrivals trips, departures trips, and total trips (arrivals plus departures). Within each of these main columns are three sub-columns. These display the number of survey days where count data is included (per time period), the average value of the selected trip rate calculation parameter (per time period), and the trip rate result (per time period). Total trip rates (the sum of the column) are also displayed at the foot of the table.

*To obtain a trip rate, the average (mean) trip rate parameter value (TRP) is first calculated for all selected survey days that have count data available for the stated time period. The average (mean) number of arrivals, departures or totals (whichever applies) is also calculated (COUNT) for all selected survey days that have count data available for the stated time period. Then, the average count is divided by the average trip rate parameter value, and multiplied by the stated calculation factor (shown just above the table and abbreviated here as FACT). So, the method is: COUNT/TRP*FACT. Trip rates are then rounded to 3 decimal places.*

TRIP RATE for Land Use 03 - RESIDENTIAL/M - MIXED PRIVATE/AFFORDABLE HOUSING
 MULTI-MODAL PEDESTRIANS
 Calculation factor: 1 DWELLS
 BOLD print indicates peak (busiest) period

Time Range	ARRIVALS			DEPARTURES			TOTALS		
	No. Days	Ave. DWELLS	Trip Rate	No. Days	Ave. DWELLS	Trip Rate	No. Days	Ave. DWELLS	Trip Rate
00:00 - 01:00									
01:00 - 02:00									
02:00 - 03:00									
03:00 - 04:00									
04:00 - 05:00									
05:00 - 06:00									
06:00 - 07:00									
07:00 - 08:00	33	141	0.022	33	141	0.044	33	141	0.066
08:00 - 09:00	33	141	0.037	33	141	0.111	33	141	0.148
09:00 - 10:00	33	141	0.038	33	141	0.023	33	141	0.061
10:00 - 11:00	33	141	0.021	33	141	0.020	33	141	0.041
11:00 - 12:00	33	141	0.017	33	141	0.024	33	141	0.041
12:00 - 13:00	33	141	0.030	33	141	0.033	33	141	0.063
13:00 - 14:00	33	141	0.027	33	141	0.030	33	141	0.057
14:00 - 15:00	33	141	0.031	33	141	0.045	33	141	0.076
15:00 - 16:00	33	141	0.101	33	141	0.032	33	141	0.133
16:00 - 17:00	33	141	0.052	33	141	0.034	33	141	0.086
17:00 - 18:00	33	141	0.039	33	141	0.034	33	141	0.073
18:00 - 19:00	33	141	0.041	33	141	0.041	33	141	0.082
19:00 - 20:00	1	119	0.008	1	119	0.008	1	119	0.016
20:00 - 21:00	1	119	0.000	1	119	0.000	1	119	0.000
21:00 - 22:00									
22:00 - 23:00									
23:00 - 24:00									
Total Rates:			0.464			0.479			0.943

This section displays the trip rate results based on the selected set of surveys and the selected count type (shown just above the table). It is split by three main columns, representing arrivals trips, departures trips, and total trips (arrivals plus departures). Within each of these main columns are three sub-columns. These display the number of survey days where count data is included (per time period), the average value of the selected trip rate calculation parameter (per time period), and the trip rate result (per time period). Total trip rates (the sum of the column) are also displayed at the foot of the table.

*To obtain a trip rate, the average (mean) trip rate parameter value (TRP) is first calculated for all selected survey days that have count data available for the stated time period. The average (mean) number of arrivals, departures or totals (whichever applies) is also calculated (COUNT) for all selected survey days that have count data available for the stated time period. Then, the average count is divided by the average trip rate parameter value, and multiplied by the stated calculation factor (shown just above the table and abbreviated here as FACT). So, the method is: COUNT/TRP*FACT. Trip rates are then rounded to 3 decimal places.*

TRIP RATE for Land Use 03 - RESIDENTIAL/M - MIXED PRIVATE/AFFORDABLE HOUSING
MULTI-MODAL BUS/TRAM PASSENGERS

Calculation factor: 1 DWELLS

BOLD print indicates peak (busiest) period

Time Range	ARRIVALS			DEPARTURES			TOTALS		
	No. Days	Ave. DWELLS	Trip Rate	No. Days	Ave. DWELLS	Trip Rate	No. Days	Ave. DWELLS	Trip Rate
00:00 - 01:00									
01:00 - 02:00									
02:00 - 03:00									
03:00 - 04:00									
04:00 - 05:00									
05:00 - 06:00									
06:00 - 07:00									
07:00 - 08:00	33	141	0.001	33	141	0.021	33	141	0.022
08:00 - 09:00	33	141	0.002	33	141	0.022	33	141	0.024
09:00 - 10:00	33	141	0.004	33	141	0.007	33	141	0.011
10:00 - 11:00	33	141	0.005	33	141	0.009	33	141	0.014
11:00 - 12:00	33	141	0.005	33	141	0.009	33	141	0.014
12:00 - 13:00	33	141	0.006	33	141	0.007	33	141	0.013
13:00 - 14:00	33	141	0.008	33	141	0.007	33	141	0.015
14:00 - 15:00	33	141	0.009	33	141	0.006	33	141	0.015
15:00 - 16:00	33	141	0.018	33	141	0.007	33	141	0.025
16:00 - 17:00	33	141	0.019	33	141	0.008	33	141	0.027
17:00 - 18:00	33	141	0.016	33	141	0.006	33	141	0.022
18:00 - 19:00	33	141	0.014	33	141	0.006	33	141	0.020
19:00 - 20:00	1	119	0.000	1	119	0.000	1	119	0.000
20:00 - 21:00	1	119	0.000	1	119	0.000	1	119	0.000
21:00 - 22:00									
22:00 - 23:00									
23:00 - 24:00									
Total Rates:			0.107			0.115			0.222

This section displays the trip rate results based on the selected set of surveys and the selected count type (shown just above the table). It is split by three main columns, representing arrivals trips, departures trips, and total trips (arrivals plus departures). Within each of these main columns are three sub-columns. These display the number of survey days where count data is included (per time period), the average value of the selected trip rate calculation parameter (per time period), and the trip rate result (per time period). Total trip rates (the sum of the column) are also displayed at the foot of the table.

*To obtain a trip rate, the average (mean) trip rate parameter value (TRP) is first calculated for all selected survey days that have count data available for the stated time period. The average (mean) number of arrivals, departures or totals (whichever applies) is also calculated (COUNT) for all selected survey days that have count data available for the stated time period. Then, the average count is divided by the average trip rate parameter value, and multiplied by the stated calculation factor (shown just above the table and abbreviated here as FACT). So, the method is: COUNT/TRP*FACT. Trip rates are then rounded to 3 decimal places.*

TRIP RATE for Land Use 03 - RESIDENTIAL/M - MIXED PRIVATE/AFFORDABLE HOUSING

MULTI-MODAL TOTAL RAIL PASSENGERS

Calculation factor: 1 DWELLS

BOLD print indicates peak (busiest) period

Time Range	ARRIVALS			DEPARTURES			TOTALS		
	No. Days	Ave. DWELLS	Trip Rate	No. Days	Ave. DWELLS	Trip Rate	No. Days	Ave. DWELLS	Trip Rate
00:00 - 01:00									
01:00 - 02:00									
02:00 - 03:00									
03:00 - 04:00									
04:00 - 05:00									
05:00 - 06:00									
06:00 - 07:00									
07:00 - 08:00	33	141	0.000	33	141	0.009	33	141	0.009
08:00 - 09:00	33	141	0.000	33	141	0.004	33	141	0.004
09:00 - 10:00	33	141	0.000	33	141	0.001	33	141	0.001
10:00 - 11:00	33	141	0.000	33	141	0.002	33	141	0.002
11:00 - 12:00	33	141	0.000	33	141	0.002	33	141	0.002
12:00 - 13:00	33	141	0.001	33	141	0.001	33	141	0.002
13:00 - 14:00	33	141	0.001	33	141	0.001	33	141	0.002
14:00 - 15:00	33	141	0.000	33	141	0.001	33	141	0.001
15:00 - 16:00	33	141	0.002	33	141	0.001	33	141	0.003
16:00 - 17:00	33	141	0.005	33	141	0.001	33	141	0.006
17:00 - 18:00	33	141	0.006	33	141	0.000	33	141	0.006
18:00 - 19:00	33	141	0.004	33	141	0.001	33	141	0.005
19:00 - 20:00	1	119	0.000	1	119	0.000	1	119	0.000
20:00 - 21:00	1	119	0.000	1	119	0.000	1	119	0.000
21:00 - 22:00									
22:00 - 23:00									
23:00 - 24:00									
Total Rates:			0.019			0.024			0.043

This section displays the trip rate results based on the selected set of surveys and the selected count type (shown just above the table). It is split by three main columns, representing arrivals trips, departures trips, and total trips (arrivals plus departures). Within each of these main columns are three sub-columns. These display the number of survey days where count data is included (per time period), the average value of the selected trip rate calculation parameter (per time period), and the trip rate result (per time period). Total trip rates (the sum of the column) are also displayed at the foot of the table.

To obtain a trip rate, the average (mean) trip rate parameter value (TRP) is first calculated for all selected survey days that have count data available for the stated time period. The average (mean) number of arrivals, departures or totals (whichever applies) is also calculated (COUNT) for all selected survey days that have count data available for the stated time period. Then, the average count is divided by the average trip rate parameter value, and multiplied by the stated calculation factor (shown just above the table and abbreviated here as FACT). So, the method is: $COUNT/TRP*FACT$. Trip rates are then rounded to 3 decimal places.

TRIP RATE for Land Use 03 - RESIDENTIAL/M - MIXED PRIVATE/AFFORDABLE HOUSING
 MULTI-MODAL COACH PASSENGERS
 Calculation factor: 1 DWELLS
 BOLD print indicates peak (busiest) period

Time Range	ARRIVALS			DEPARTURES			TOTALS		
	No. Days	Ave. DWELLS	Trip Rate	No. Days	Ave. DWELLS	Trip Rate	No. Days	Ave. DWELLS	Trip Rate
00:00 - 01:00									
01:00 - 02:00									
02:00 - 03:00									
03:00 - 04:00									
04:00 - 05:00									
05:00 - 06:00									
06:00 - 07:00									
07:00 - 08:00	33	141	0.000	33	141	0.001	33	141	0.001
08:00 - 09:00	33	141	0.000	33	141	0.001	33	141	0.001
09:00 - 10:00	33	141	0.000	33	141	0.000	33	141	0.000
10:00 - 11:00	33	141	0.000	33	141	0.000	33	141	0.000
11:00 - 12:00	33	141	0.000	33	141	0.000	33	141	0.000
12:00 - 13:00	33	141	0.000	33	141	0.000	33	141	0.000
13:00 - 14:00	33	141	0.000	33	141	0.000	33	141	0.000
14:00 - 15:00	33	141	0.000	33	141	0.000	33	141	0.000
15:00 - 16:00	33	141	0.002	33	141	0.000	33	141	0.002
16:00 - 17:00	33	141	0.001	33	141	0.000	33	141	0.001
17:00 - 18:00	33	141	0.000	33	141	0.000	33	141	0.000
18:00 - 19:00	33	141	0.000	33	141	0.000	33	141	0.000
19:00 - 20:00	1	119	0.000	1	119	0.000	1	119	0.000
20:00 - 21:00	1	119	0.000	1	119	0.000	1	119	0.000
21:00 - 22:00									
22:00 - 23:00									
23:00 - 24:00									
Total Rates:			0.003			0.002			0.005

This section displays the trip rate results based on the selected set of surveys and the selected count type (shown just above the table). It is split by three main columns, representing arrivals trips, departures trips, and total trips (arrivals plus departures). Within each of these main columns are three sub-columns. These display the number of survey days where count data is included (per time period), the average value of the selected trip rate calculation parameter (per time period), and the trip rate result (per time period). Total trip rates (the sum of the column) are also displayed at the foot of the table.

*To obtain a trip rate, the average (mean) trip rate parameter value (TRP) is first calculated for all selected survey days that have count data available for the stated time period. The average (mean) number of arrivals, departures or totals (whichever applies) is also calculated (COUNT) for all selected survey days that have count data available for the stated time period. Then, the average count is divided by the average trip rate parameter value, and multiplied by the stated calculation factor (shown just above the table and abbreviated here as FACT). So, the method is: COUNT/TRP*FACT. Trip rates are then rounded to 3 decimal places.*

TRIP RATE for Land Use 03 - RESIDENTIAL/M - MIXED PRIVATE/AFFORDABLE HOUSING
MULTI-MODAL PUBLIC TRANSPORT USERS

Calculation factor: 1 DWELLS

BOLD print indicates peak (busiest) period

Time Range	ARRIVALS			DEPARTURES			TOTALS		
	No. Days	Ave. DWELLS	Trip Rate	No. Days	Ave. DWELLS	Trip Rate	No. Days	Ave. DWELLS	Trip Rate
00:00 - 01:00									
01:00 - 02:00									
02:00 - 03:00									
03:00 - 04:00									
04:00 - 05:00									
05:00 - 06:00									
06:00 - 07:00									
07:00 - 08:00	33	141	0.001	33	141	0.031	33	141	0.032
08:00 - 09:00	33	141	0.002	33	141	0.027	33	141	0.029
09:00 - 10:00	33	141	0.004	33	141	0.008	33	141	0.012
10:00 - 11:00	33	141	0.005	33	141	0.010	33	141	0.015
11:00 - 12:00	33	141	0.006	33	141	0.011	33	141	0.017
12:00 - 13:00	33	141	0.008	33	141	0.009	33	141	0.017
13:00 - 14:00	33	141	0.009	33	141	0.008	33	141	0.017
14:00 - 15:00	33	141	0.010	33	141	0.007	33	141	0.017
15:00 - 16:00	33	141	0.022	33	141	0.008	33	141	0.030
16:00 - 17:00	33	141	0.024	33	141	0.009	33	141	0.033
17:00 - 18:00	33	141	0.022	33	141	0.006	33	141	0.028
18:00 - 19:00	33	141	0.018	33	141	0.008	33	141	0.026
19:00 - 20:00	1	119	0.000	1	119	0.000	1	119	0.000
20:00 - 21:00	1	119	0.000	1	119	0.000	1	119	0.000
21:00 - 22:00									
22:00 - 23:00									
23:00 - 24:00									
Total Rates:			0.131			0.142			0.273

This section displays the trip rate results based on the selected set of surveys and the selected count type (shown just above the table). It is split by three main columns, representing arrivals trips, departures trips, and total trips (arrivals plus departures). Within each of these main columns are three sub-columns. These display the number of survey days where count data is included (per time period), the average value of the selected trip rate calculation parameter (per time period), and the trip rate result (per time period). Total trip rates (the sum of the column) are also displayed at the foot of the table.

*To obtain a trip rate, the average (mean) trip rate parameter value (TRP) is first calculated for all selected survey days that have count data available for the stated time period. The average (mean) number of arrivals, departures or totals (whichever applies) is also calculated (COUNT) for all selected survey days that have count data available for the stated time period. Then, the average count is divided by the average trip rate parameter value, and multiplied by the stated calculation factor (shown just above the table and abbreviated here as FACT). So, the method is: COUNT/TRP*FACT. Trip rates are then rounded to 3 decimal places.*

TRIP RATE for Land Use 03 - RESIDENTIAL/M - MIXED PRIVATE/AFFORDABLE HOUSING

MULTI-MODAL TOTAL PEOPLE

Calculation factor: 1 DWELLS

BOLD print indicates peak (busiest) period

Total People to Total Vehicles ratio (all time periods and directions): 1.78

Time Range	ARRIVALS			DEPARTURES			TOTALS		
	No. Days	Ave. DWELLS	Trip Rate	No. Days	Ave. DWELLS	Trip Rate	No. Days	Ave. DWELLS	Trip Rate
00:00 - 01:00									
01:00 - 02:00									
02:00 - 03:00									
03:00 - 04:00									
04:00 - 05:00									
05:00 - 06:00									
06:00 - 07:00									
07:00 - 08:00	33	141	0.113	33	141	0.513	33	141	0.626
08:00 - 09:00	33	141	0.206	33	141	0.761	33	141	0.967
09:00 - 10:00	33	141	0.215	33	141	0.269	33	141	0.484
10:00 - 11:00	33	141	0.179	33	141	0.234	33	141	0.413
11:00 - 12:00	33	141	0.179	33	141	0.223	33	141	0.402
12:00 - 13:00	33	141	0.235	33	141	0.221	33	141	0.456
13:00 - 14:00	33	141	0.237	33	141	0.238	33	141	0.475
14:00 - 15:00	33	141	0.238	33	141	0.284	33	141	0.522
15:00 - 16:00	33	141	0.583	33	141	0.260	33	141	0.843
16:00 - 17:00	33	141	0.500	33	141	0.264	33	141	0.764
17:00 - 18:00	33	141	0.532	33	141	0.279	33	141	0.811
18:00 - 19:00	33	141	0.482	33	141	0.282	33	141	0.764
19:00 - 20:00	1	119	0.176	1	119	0.025	1	119	0.201
20:00 - 21:00	1	119	0.151	1	119	0.017	1	119	0.168
21:00 - 22:00									
22:00 - 23:00									
23:00 - 24:00									
Total Rates:			4.026			3.870			7.896

This section displays the trip rate results based on the selected set of surveys and the selected count type (shown just above the table). It is split by three main columns, representing arrivals trips, departures trips, and total trips (arrivals plus departures). Within each of these main columns are three sub-columns. These display the number of survey days where count data is included (per time period), the average value of the selected trip rate calculation parameter (per time period), and the trip rate result (per time period). Total trip rates (the sum of the column) are also displayed at the foot of the table.

To obtain a trip rate, the average (mean) trip rate parameter value (TRP) is first calculated for all selected survey days that have count data available for the stated time period. The average (mean) number of arrivals, departures or totals (whichever applies) is also calculated (COUNT) for all selected survey days that have count data available for the stated time period. Then, the average count is divided by the average trip rate parameter value, and multiplied by the stated calculation factor (shown just above the table and abbreviated here as FACT). So, the method is: $COUNT/TRP*FACT$. Trip rates are then rounded to 3 decimal places.

TRIP RATE for Land Use 03 - RESIDENTIAL/M - MIXED PRIVATE/AFFORDABLE HOUSING
 MULTI-MODAL CARS
 Calculation factor: 1 DWELLS
 BOLD print indicates peak (busiest) period

Time Range	ARRIVALS			DEPARTURES			TOTALS		
	No. Days	Ave. DWELLS	Trip Rate	No. Days	Ave. DWELLS	Trip Rate	No. Days	Ave. DWELLS	Trip Rate
00:00 - 01:00									
01:00 - 02:00									
02:00 - 03:00									
03:00 - 04:00									
04:00 - 05:00									
05:00 - 06:00									
06:00 - 07:00									
07:00 - 08:00	33	141	0.058	33	141	0.244	33	141	0.302
08:00 - 09:00	33	141	0.112	33	141	0.314	33	141	0.426
09:00 - 10:00	33	141	0.112	33	141	0.130	33	141	0.242
10:00 - 11:00	33	141	0.091	33	141	0.110	33	141	0.201
11:00 - 12:00	33	141	0.093	33	141	0.106	33	141	0.199
12:00 - 13:00	33	141	0.117	33	141	0.104	33	141	0.221
13:00 - 14:00	33	141	0.116	33	141	0.120	33	141	0.236
14:00 - 15:00	33	141	0.116	33	141	0.155	33	141	0.271
15:00 - 16:00	33	141	0.223	33	141	0.130	33	141	0.353
16:00 - 17:00	33	141	0.227	33	141	0.128	33	141	0.355
17:00 - 18:00	33	141	0.264	33	141	0.138	33	141	0.402
18:00 - 19:00	33	141	0.246	33	141	0.142	33	141	0.388
19:00 - 20:00	1	119	0.126	1	119	0.008	1	119	0.134
20:00 - 21:00	1	119	0.101	1	119	0.017	1	119	0.118
21:00 - 22:00									
22:00 - 23:00									
23:00 - 24:00									
Total Rates:			2.002			1.846			3.848

This section displays the trip rate results based on the selected set of surveys and the selected count type (shown just above the table). It is split by three main columns, representing arrivals trips, departures trips, and total trips (arrivals plus departures). Within each of these main columns are three sub-columns. These display the number of survey days where count data is included (per time period), the average value of the selected trip rate calculation parameter (per time period), and the trip rate result (per time period). Total trip rates (the sum of the column) are also displayed at the foot of the table.

*To obtain a trip rate, the average (mean) trip rate parameter value (TRP) is first calculated for all selected survey days that have count data available for the stated time period. The average (mean) number of arrivals, departures or totals (whichever applies) is also calculated (COUNT) for all selected survey days that have count data available for the stated time period. Then, the average count is divided by the average trip rate parameter value, and multiplied by the stated calculation factor (shown just above the table and abbreviated here as FACT). So, the method is: COUNT/TRP*FACT. Trip rates are then rounded to 3 decimal places.*

TRIP RATE for Land Use 03 - RESIDENTIAL/M - MIXED PRIVATE/AFFORDABLE HOUSING
 MULTI-MODAL LGVS
 Calculation factor: 1 DWELLS
 BOLD print indicates peak (busiest) period

Time Range	ARRIVALS			DEPARTURES			TOTALS		
	No. Days	Ave. DWELLS	Trip Rate	No. Days	Ave. DWELLS	Trip Rate	No. Days	Ave. DWELLS	Trip Rate
00:00 - 01:00									
01:00 - 02:00									
02:00 - 03:00									
03:00 - 04:00									
04:00 - 05:00									
05:00 - 06:00									
06:00 - 07:00									
07:00 - 08:00	33	141	0.011	33	141	0.034	33	141	0.045
08:00 - 09:00	33	141	0.013	33	141	0.025	33	141	0.038
09:00 - 10:00	33	141	0.020	33	141	0.023	33	141	0.043
10:00 - 11:00	33	141	0.021	33	141	0.024	33	141	0.045
11:00 - 12:00	33	141	0.021	33	141	0.023	33	141	0.044
12:00 - 13:00	33	141	0.022	33	141	0.021	33	141	0.043
13:00 - 14:00	33	141	0.020	33	141	0.018	33	141	0.038
14:00 - 15:00	33	141	0.019	33	141	0.018	33	141	0.037
15:00 - 16:00	33	141	0.023	33	141	0.020	33	141	0.043
16:00 - 17:00	33	141	0.033	33	141	0.013	33	141	0.046
17:00 - 18:00	33	141	0.030	33	141	0.016	33	141	0.046
18:00 - 19:00	33	141	0.016	33	141	0.012	33	141	0.028
19:00 - 20:00	1	119	0.000	1	119	0.000	1	119	0.000
20:00 - 21:00	1	119	0.000	1	119	0.000	1	119	0.000
21:00 - 22:00									
22:00 - 23:00									
23:00 - 24:00									
Total Rates:			0.249			0.247			0.496

This section displays the trip rate results based on the selected set of surveys and the selected count type (shown just above the table). It is split by three main columns, representing arrivals trips, departures trips, and total trips (arrivals plus departures). Within each of these main columns are three sub-columns. These display the number of survey days where count data is included (per time period), the average value of the selected trip rate calculation parameter (per time period), and the trip rate result (per time period). Total trip rates (the sum of the column) are also displayed at the foot of the table.

*To obtain a trip rate, the average (mean) trip rate parameter value (TRP) is first calculated for all selected survey days that have count data available for the stated time period. The average (mean) number of arrivals, departures or totals (whichever applies) is also calculated (COUNT) for all selected survey days that have count data available for the stated time period. Then, the average count is divided by the average trip rate parameter value, and multiplied by the stated calculation factor (shown just above the table and abbreviated here as FACT). So, the method is: COUNT/TRP*FACT. Trip rates are then rounded to 3 decimal places.*

TRIP RATE for Land Use 03 - RESIDENTIAL/M - MIXED PRIVATE/AFFORDABLE HOUSING
 MULTI-MODAL MOTOR CYCLES
 Calculation factor: 1 DWELLS
 BOLD print indicates peak (busiest) period

Time Range	ARRIVALS			DEPARTURES			TOTALS		
	No. Days	Ave. DWELLS	Trip Rate	No. Days	Ave. DWELLS	Trip Rate	No. Days	Ave. DWELLS	Trip Rate
00:00 - 01:00									
01:00 - 02:00									
02:00 - 03:00									
03:00 - 04:00									
04:00 - 05:00									
05:00 - 06:00									
06:00 - 07:00									
07:00 - 08:00	33	141	0.001	33	141	0.003	33	141	0.004
08:00 - 09:00	33	141	0.001	33	141	0.003	33	141	0.004
09:00 - 10:00	33	141	0.000	33	141	0.001	33	141	0.001
10:00 - 11:00	33	141	0.000	33	141	0.000	33	141	0.000
11:00 - 12:00	33	141	0.000	33	141	0.001	33	141	0.001
12:00 - 13:00	33	141	0.001	33	141	0.001	33	141	0.002
13:00 - 14:00	33	141	0.001	33	141	0.001	33	141	0.002
14:00 - 15:00	33	141	0.001	33	141	0.000	33	141	0.001
15:00 - 16:00	33	141	0.002	33	141	0.001	33	141	0.003
16:00 - 17:00	33	141	0.003	33	141	0.002	33	141	0.005
17:00 - 18:00	33	141	0.004	33	141	0.002	33	141	0.006
18:00 - 19:00	33	141	0.003	33	141	0.001	33	141	0.004
19:00 - 20:00	1	119	0.000	1	119	0.000	1	119	0.000
20:00 - 21:00	1	119	0.000	1	119	0.000	1	119	0.000
21:00 - 22:00									
22:00 - 23:00									
23:00 - 24:00									
Total Rates:			0.017			0.016			0.033

This section displays the trip rate results based on the selected set of surveys and the selected count type (shown just above the table). It is split by three main columns, representing arrivals trips, departures trips, and total trips (arrivals plus departures). Within each of these main columns are three sub-columns. These display the number of survey days where count data is included (per time period), the average value of the selected trip rate calculation parameter (per time period), and the trip rate result (per time period). Total trip rates (the sum of the column) are also displayed at the foot of the table.

*To obtain a trip rate, the average (mean) trip rate parameter value (TRP) is first calculated for all selected survey days that have count data available for the stated time period. The average (mean) number of arrivals, departures or totals (whichever applies) is also calculated (COUNT) for all selected survey days that have count data available for the stated time period. Then, the average count is divided by the average trip rate parameter value, and multiplied by the stated calculation factor (shown just above the table and abbreviated here as FACT). So, the method is: COUNT/TRP*FACT. Trip rates are then rounded to 3 decimal places.*