

# PROPOSED FIRST FLOOR PLAN

# PORTHCAWL HOTEL 7-11 JOHN STREET PORTHCAWL BRIDGEND CF36 3AP

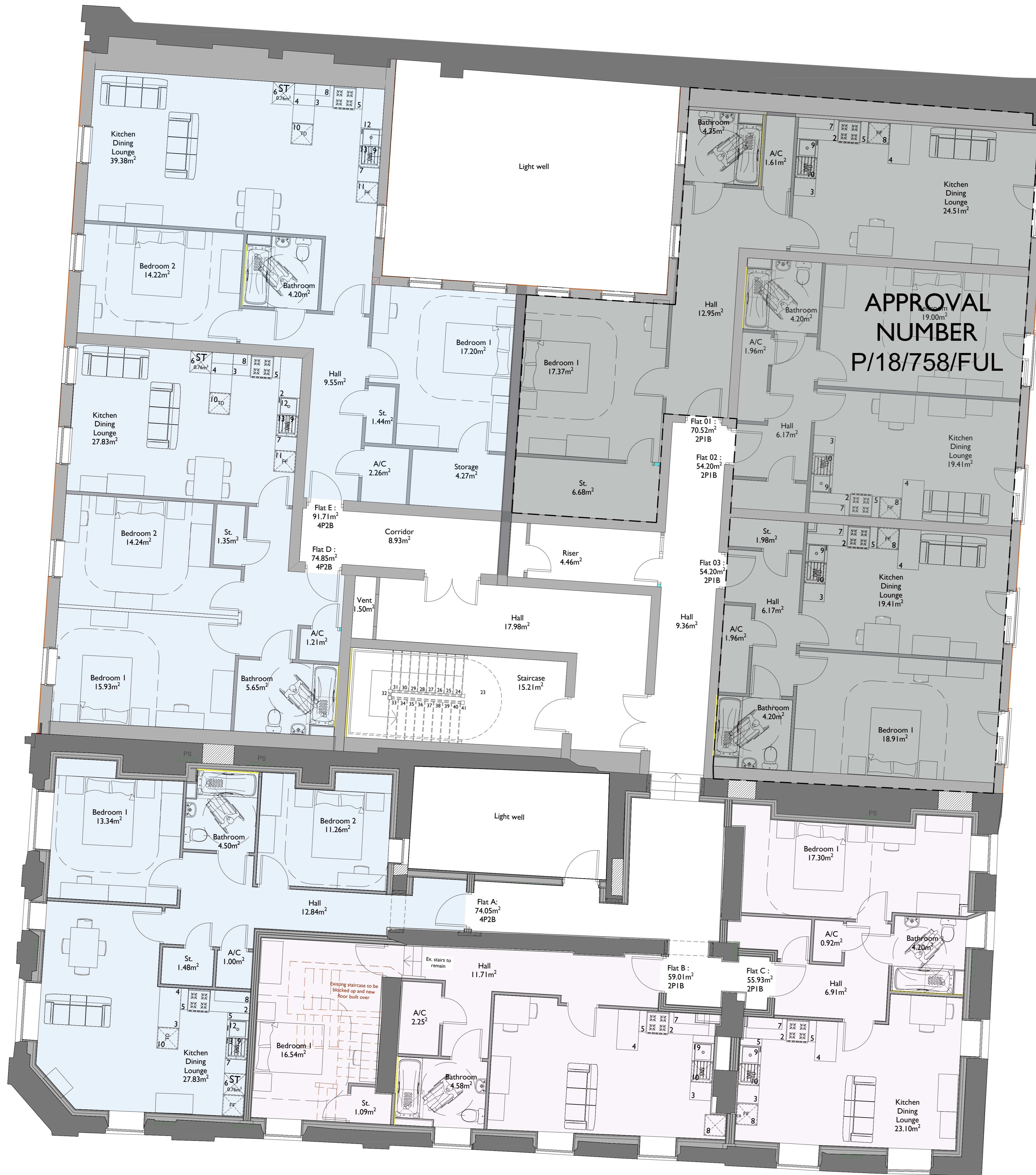
KEY	
	HT 2.1.1 1 Bedroom Flat
	HT 4.2.1 2 Bedroom Flat
	Planning Approved Planning Reference: P/18/758/FUL
	Removal of Structure

### ACCOMMODATION SCHEDULE BASED ON INTERNAL GROSS AREA:

EXISTING BUILDING:	
BASEMENT	75.42m <sup>2</sup>
GROUND FLOOR	613.10m <sup>2</sup> (carport excluded)
FIRST FLOOR	713.38m <sup>2</sup>
SECOND FLOOR	713.38m <sup>2</sup>
THIRD FLOOR	713.38m <sup>2</sup>
FOURTH FLOOR	46.07m <sup>2</sup>
<b>TOTAL:</b>	<b>2874.73m<sup>2</sup></b>

### PROPOSED FIRST FLOOR FLATS:

FLAT A	2 BEDROOM	74.05m <sup>2</sup>
FLAT B	1 BEDROOM	59.01m <sup>2</sup>
FLAT C	1 BEDROOM	55.93m <sup>2</sup>
FLAT D	2 BEDROOM	74.85m <sup>2</sup>
FLAT E	2 BEDROOM	91.71m <sup>2</sup>
<b>TOTAL:</b>		<b>355.55m<sup>2</sup></b>



**Notes**  
 This drawing is copyrighted and must not be reproduced or disclosed to third parties without the prior written permission of Prime Architecture Limited.  
 Do not scale from this drawing. Responsibility will not be accepted by Prime Architecture Limited for errors made by others scaling from the drawing. Use written dimensions only. Contractor to verify all dimensions before commencing work on site.  
 Prime Architecture Limited are to be notified immediately in writing of any discrepancies. All survey information incorporated within the drawings cannot be guaranteed as accurate unless confirmed by a fixed dimension.  
 All dimensions are in millimeters unless otherwise noted.  
 This drawing is to be read in conjunction with all relevant project drawings and specification prepared by Prime Architecture Limited and other relevant consultants, specialist, etc.  
 CDM notes are provided to assist the contractor in managing residual hazards identified during the design stage. Any such notes do not relieve the contractor of their duties and they must provide a safe system of work based on method statements, risk assessments, etc.

Revision:	Description:	Date:
A:	Accommodations schedule amended.	12.11.2024

Drawing Status:  
**PLANNING**



Prime Architecture Limited, 3 Llandeilo Road, Cross Hands, Llanelli, SA14 6NA  
 01269 842 575  
 info@prime-arch.co.uk  
 www.prim-arch.co.uk  
 © Prime Architecture Limited

Client:  
 Easy Living Ltd

Project Title:  
 Proposed refurbishment & redevelopment (partial demolition), including the provision of 22no. 1 & 2 bedroom residential units & commercial units at ground floor

Drawing Title:  
 Proposed First Floor Plan

Scale:	Drawn:	Date:
1:50 @ A0	RE	Aug 24
Job No:	Drawing No:	Rev:
1047	06	A