



- TO SITE/avoiding John Street**
1. Leave M4 J37
  2. Join A4229 / Pyle road
  3. Join A4106
  4. At roundabout 5<sup>th</sup> exit on to Lais road
  5. Left off Lais road on to Church place (@ the coop)
  6. Leave church Place left on to Well street
  7. Well street ahead on to Dock street
  8. Left on to Hillsboro place

- FROM SITE**
1. Leave Hillsboro place on to Dock street
  2. Left from Dock street on to John street (for approx. 150m)
  3. Left on to Esplanade
  4. Ahead on to Portway road
  5. 3<sup>rd</sup> exit on to A4106
  6. Follow signs for M4

**Legend**

 Material Delivery Route

 Route defined by AA wayfinder signage

11 min  
4.8 miles

11 min  
4 miles



8 min  
3.9 miles



“No construction traffic”  
Signs to be placed this end  
of John Street.



**Legend**

-  Material Delivery Route
-  Route defined by AA wayfinder signage





Public toilets

Mary Street

we's

Mary St

Mary St

Mary St

Mary St

10

8

6

4

11

7

4

11

7

36

12A

20

12

12

12

12

John Street Carpark

Nostalgia Antiques  
Antique Shop

Finnegans Fish & Chip  
Restaurant and Takeaway

Epic Barber Shop

Isabella's  
Portuguese • ££

Balsa Surf  
Shop Porthcawl  
Surf shop

Gusto Grill

The Fishmonger's Cat  
Fishmonger

One Stop

Porthcawl Vape Shop  
Vaporiser Shop

Halifax

Divine  
Jeweller

Porthcawl Museum  
Local history museum in 1870s building

Ph

28

John St

B&M Store  
Discount shop

Atm

Robert Davies  
Sports Travel

34

Dainty Makes Balloons

Cheeky Chillies

28

28

28

3

3

3

Card Factory  
Greetings Card Shop

25

45

Hillsboro Pl

Hillsboro Pl

Dock St

Canolfan Gwaith  
Porthcawl | Porthcawl...

7

7

Dockside bar & grill

Driven Taxis

Dock St

Dock St

Dock St

Breaksea House

Hills







→ Route from site back to the M4

19 Mary Street

Bargain Booze Convenience Store

Pavilion Court Flats

Grand Pavilion

Public toilet

Esplanade

Piccolo Bar

The Black Ramp (Tarmac Beach)

Porthcawl Vape Shop Vaporiser Shop

Finnegans Fish & Chip Restaurant and Takeaway

Isabella's Portuguese • EE

Fablas Ice Cream Ice Cream

Hazeldell & Alberni Guest House

The Waterfront

Cosy Corner Lounge

Boat House Fish Bar Fish and Chips • EE

Pier Cafe

Halifax

Dockside bar & grill

Dock St

B&M Store Discount shop

Shepherds the Vets

Ye Pirates Club

Lifeboat Rd

The Square

Saltwater Inn Grill • EE

Canolfan Gwaith Porthcawl Porthcawl

Hillsboro Place Carpark

Hillsboro Pl

The Portway

The Portway

Eastern Promenade

Sidoli's Ice Cream Parlour Ice Cream

Porthcawl Marina

Google



## Control of dust

Dust levels will be kept to a minimum by utilising high pressure hoses to deliver fine mist water sprays onto the working area during the demolition phase and as necessary there after. A constant water supply will also be provided to any crushing plant required during the operation. The movement of any crushed material will be kept to a minimum with stockpiles located away from site boundaries and maintained at heights less susceptible to the effects of wind.

With regard to earthworks, during periods of dry weather, when dust is likely to cause a nuisance, specific work areas will be 'damped down'. In relation to dust generated by plant movements this operation will normally be carried out by a suitably specified road brush. At times when the works do not require the full-time attendance of a road brush, water will be introduced to the work area via other means i.e. hose pipe, water bowser, sprinkler etc. In addition, prior to disturbing any stockpile of soil or crushed material, consideration will be given to the introduction of water.

Limiting the speed limit to 5mph will generate less dust.

## Water Damping

As aforementioned, the fine spraying of water is the most effective way of suppressing dust. This will be carried out with a water bowser and hose. Spraying will be repeated regularly during warm and sunny conditions. However, spraying will not be allowed to create excessive mud, which could cause run-off into drainage systems or water courses.

We will consider spraying:

- 🕒 areas of unpaved work subject to traffic or wind
- 🕒 sand, spoil and aggregate stockpiles
- 🕒 during the loading and unloading of dust generating materials

## Avoiding Dust Generation including crushing and screening operations

The following measures will be employed to avoid dust generation:

### Roads

- 🕒 Minimise the length and width of haul roads to reduce the surface area
- 🕒 Pave heavily used areas and sweep regularly
- 🕒 Sweep public roads with a vacuum sweeper when required.
- 🕒 Limit vehicle speeds – slower speeds generate less dust (5mph)
- 🕒 Minimise vehicle movements
- 🕒 Damp down.

### Plant and Vehicles

- 🕒 Ensure vehicle wheels are cleaned before leaving site. Mobile wheel wash area will be set up if deemed necessary.
- 🕒 Exhaust fumes should be directed upwards
- 🕒 All lorries leaving the site will be fitted with sheet covers to contain dust
- 🕒 Plant and vehicles should be maintained in good working order
- 🕒 Drivers must observe site speed limits to minimise dust generation

## **Wheel Washing Facilities**

A designated operative is to carry out the wheel washing of construction vehicles leaving the site if deemed necessary (via a handheld jet wash) to ensure that no mud is to be carried onto the public highway. The effectiveness of the wheel wash facilities will be monitored throughout the construction of the development. The first operation will be to install the access road to tarmac Binder level to reduce dust and mud.

This operation will be carried out within the development boundary, so that resulting water run-off is suitably controlled.

The wheel wash facilities will be repositioned accordingly as the construction of development progresses.

In addition to this a road brush will be in attendance when any 'cart away' of arisings in relation to earth works takes place.

## **Car parking**

Contractor and visitor parking is to be in the payable Hillsboro Place carpark, or in the free spots along the Esplanade. No construction related vehicles are to park in the neighbouring streets or parking spaces.

## **Pedestrian and traffic management**

Pedestrians will be free to walk on the footpath of John street and Dock street. The scaffold will have protection tied to the tubes, and protection under the boards of the base lift to stop and debris falling on to footpath. This eliminates any need for pedestrians to walk in the highway. This will also help with the vision splay of vehicles approaching from any direction. At the corner of Dock street and Hillsboro Place the footpath disappears. The road needs to be crossed to join the footpath by the Dockside bar and grill which then leads pedestrians safely up Hillsboro Place or straight ahead to Hillsboro Place carpark. Right of way will always be given to pedestrians and site personnel with banksman duties will be made aware of this. We will place a red crossing point on the corner of Dock street and Hillsboro Place to indicate to pedestrians that it is indeed a crossing point.

We will be requesting permits to allow us to place scaffold in a section of the demarked loading areas, this will be fenced off with haras style fencing and highlighted with chapter 8 red and white plastic barriers. This will prevent unlawful entry onto the scaffold / premises and will highlight the scaffold with the reflective barriers to oncoming vehicles headlights.

Area to be set aside internally to store construction plant and materials. This will be done on GF with internal hoists to move materials vertically between lifts.

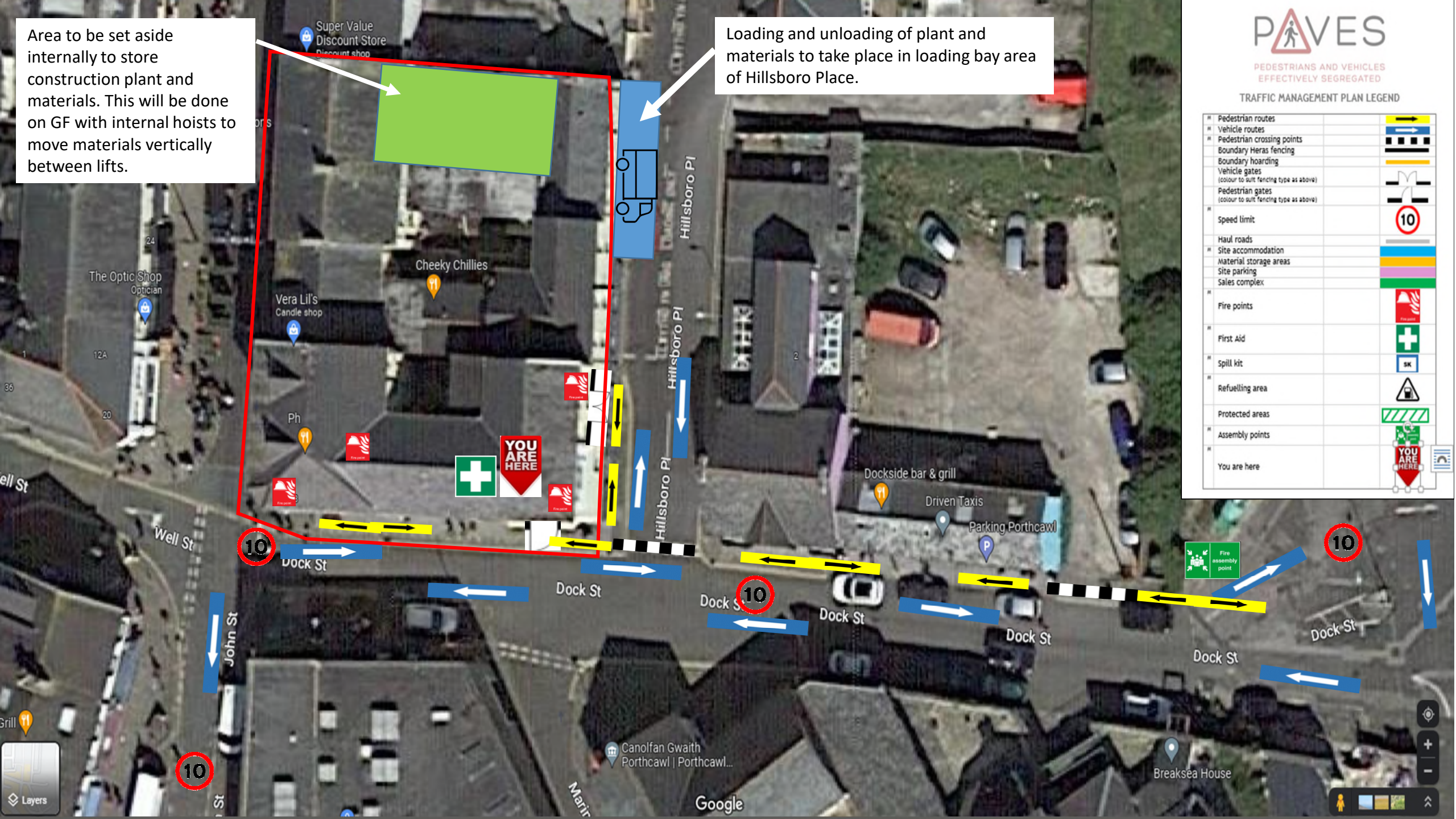
Loading and unloading of plant and materials to take place in loading bay area of Hillsboro Place.

# PAVES

PEDESTRIANS AND VEHICLES EFFECTIVELY SEGREGATED

## TRAFFIC MANAGEMENT PLAN LEGEND

■	Pedestrian routes	
■	Vehicle routes	
■	Pedestrian crossing points	
■	Boundary Heras fencing	
■	Boundary hoarding	
■	Vehicle gates (colour to suit fencing type as above)	
■	Pedestrian gates (colour to suit fencing type as above)	
■	Speed limit	
■	Haul roads	
■	Site accommodation	
■	Material storage areas	
■	Site parking	
■	Sales complex	
■	Fire points	
■	First Aid	
■	Spill kit	
■	Refuelling area	
■	Protected areas	
■	Assembly points	
■	You are here	



Layers

Navigation controls: zoom in (+), zoom out (-), location pin, and other map controls.