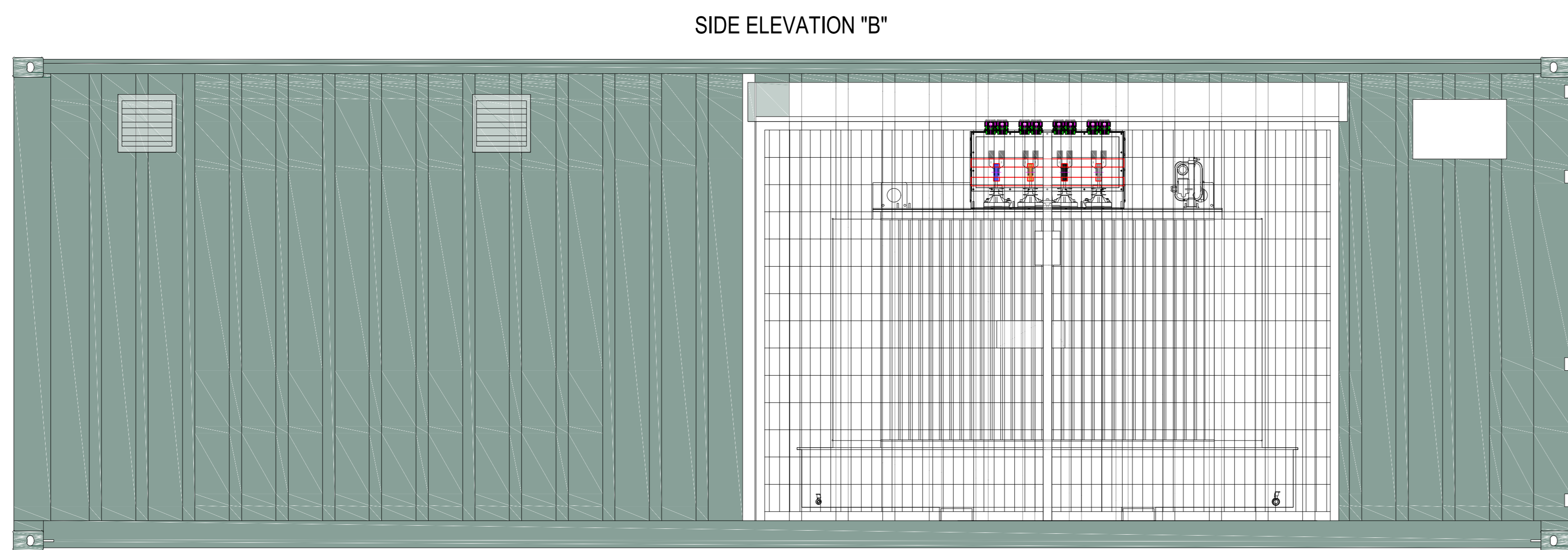
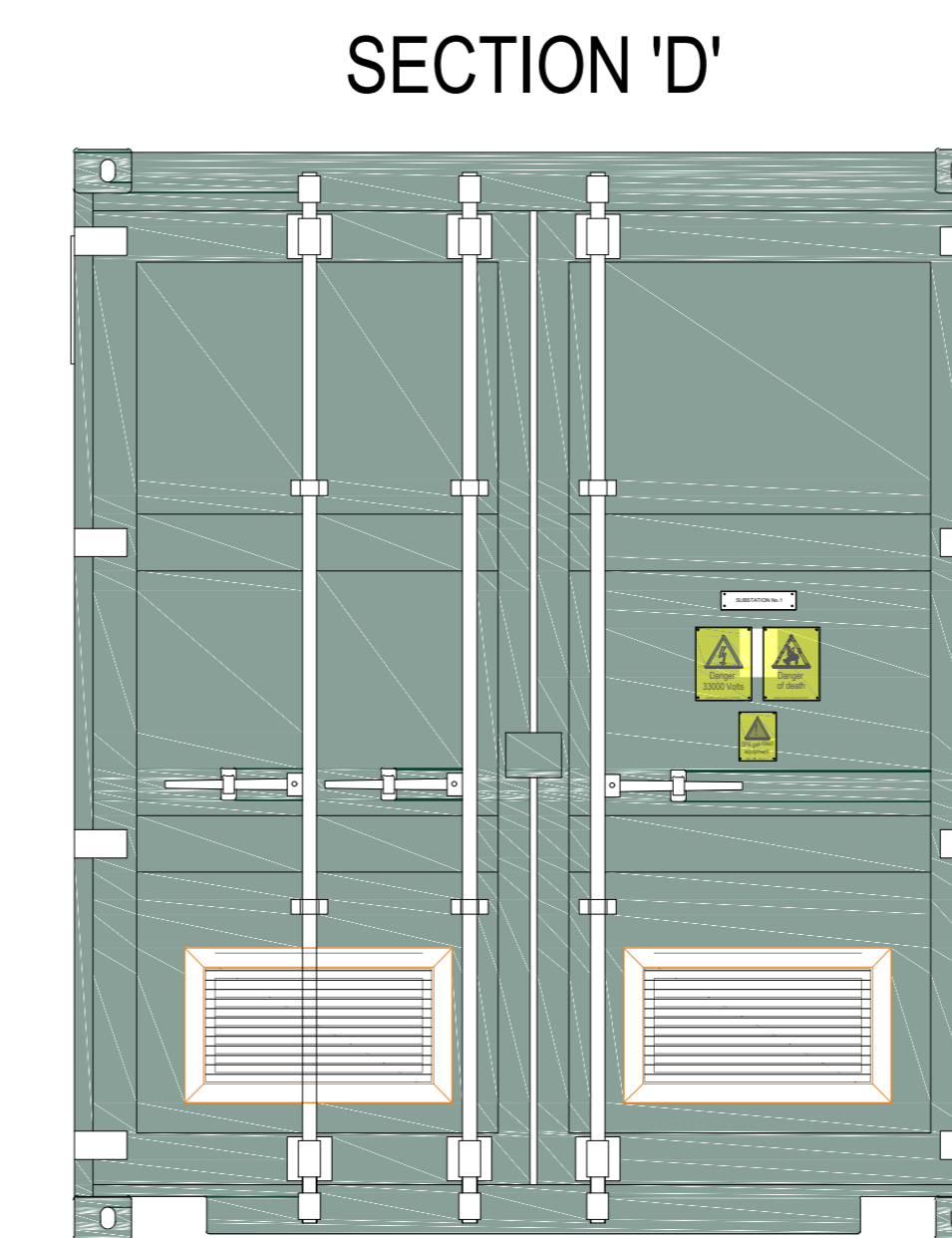
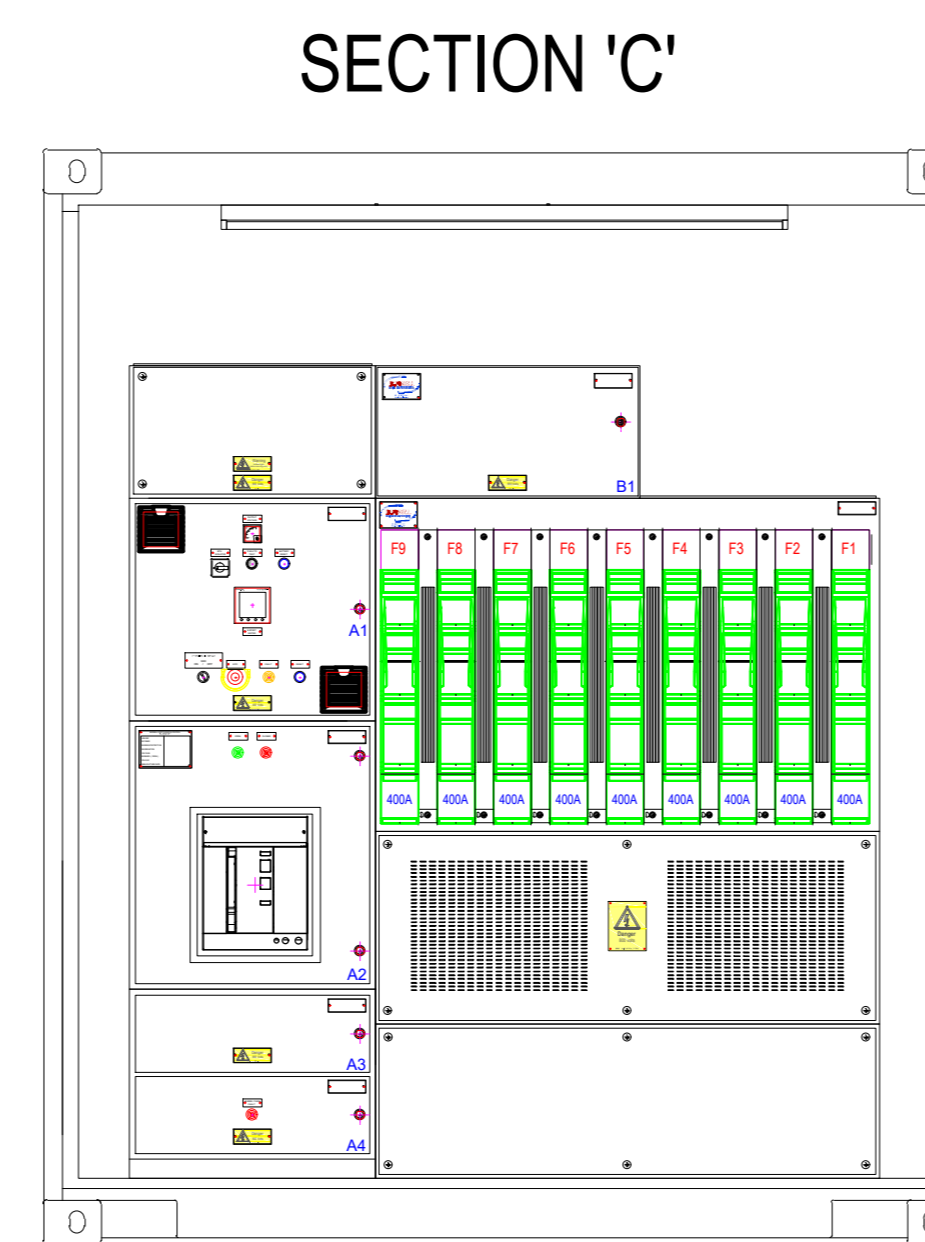
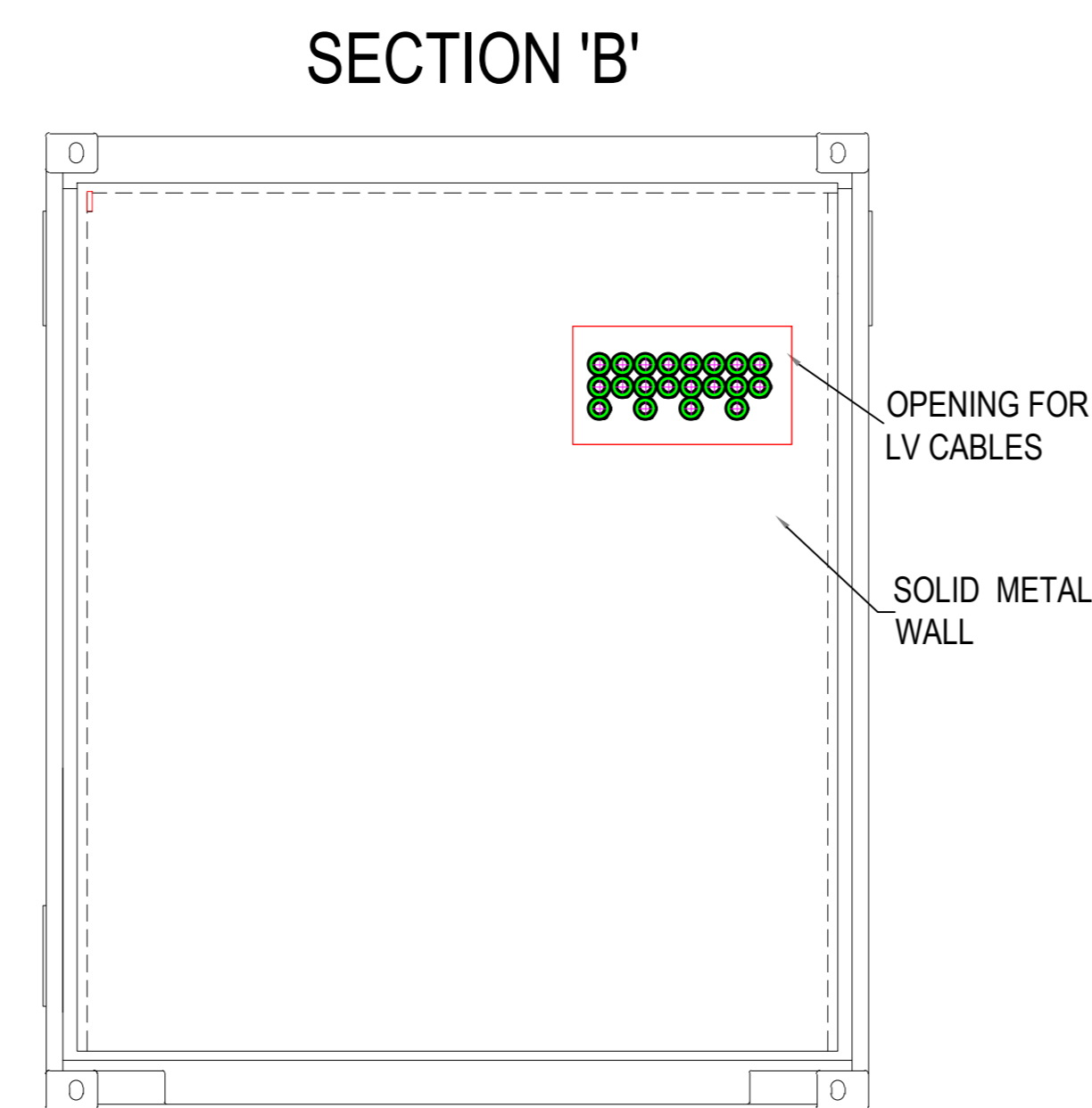
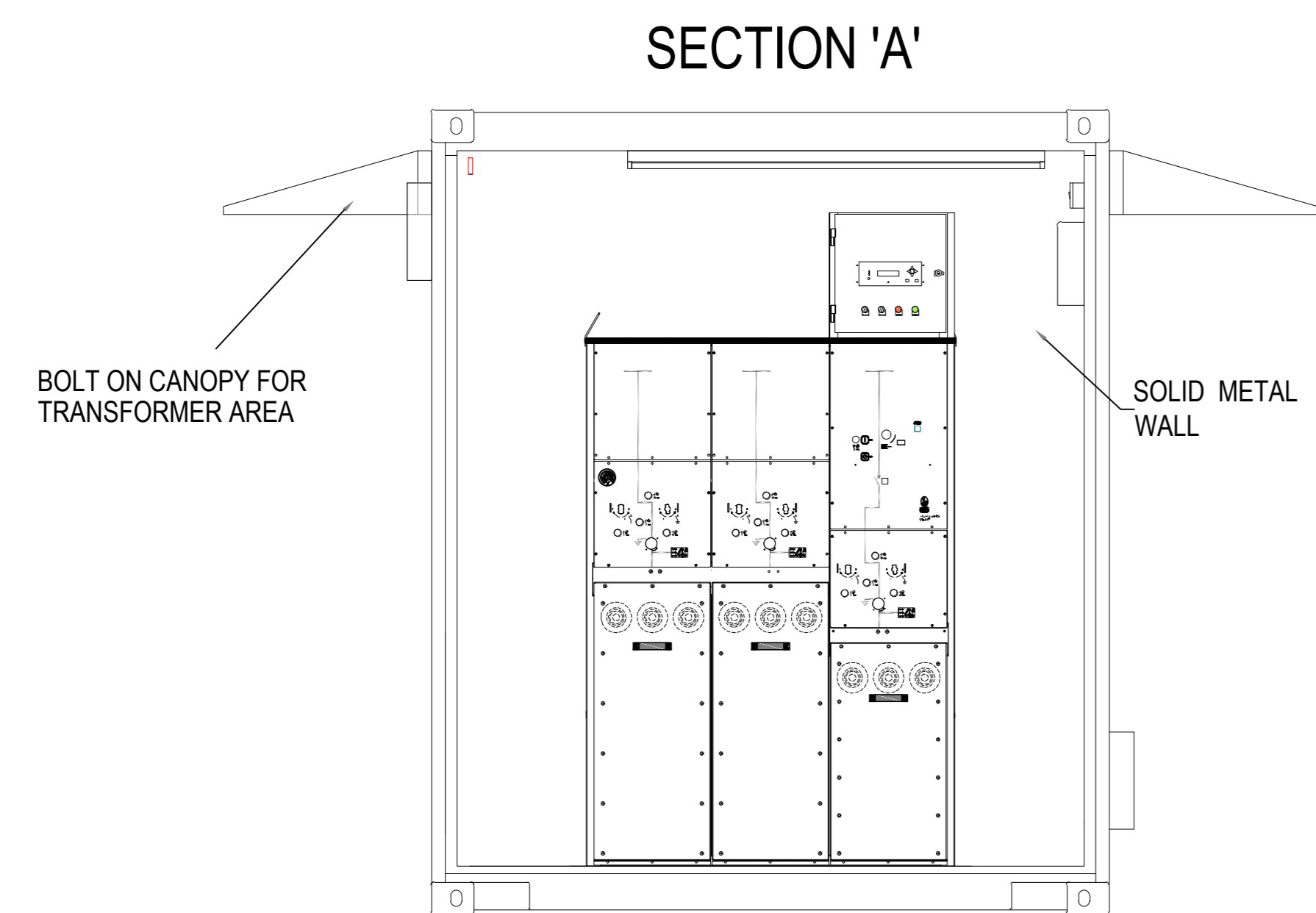
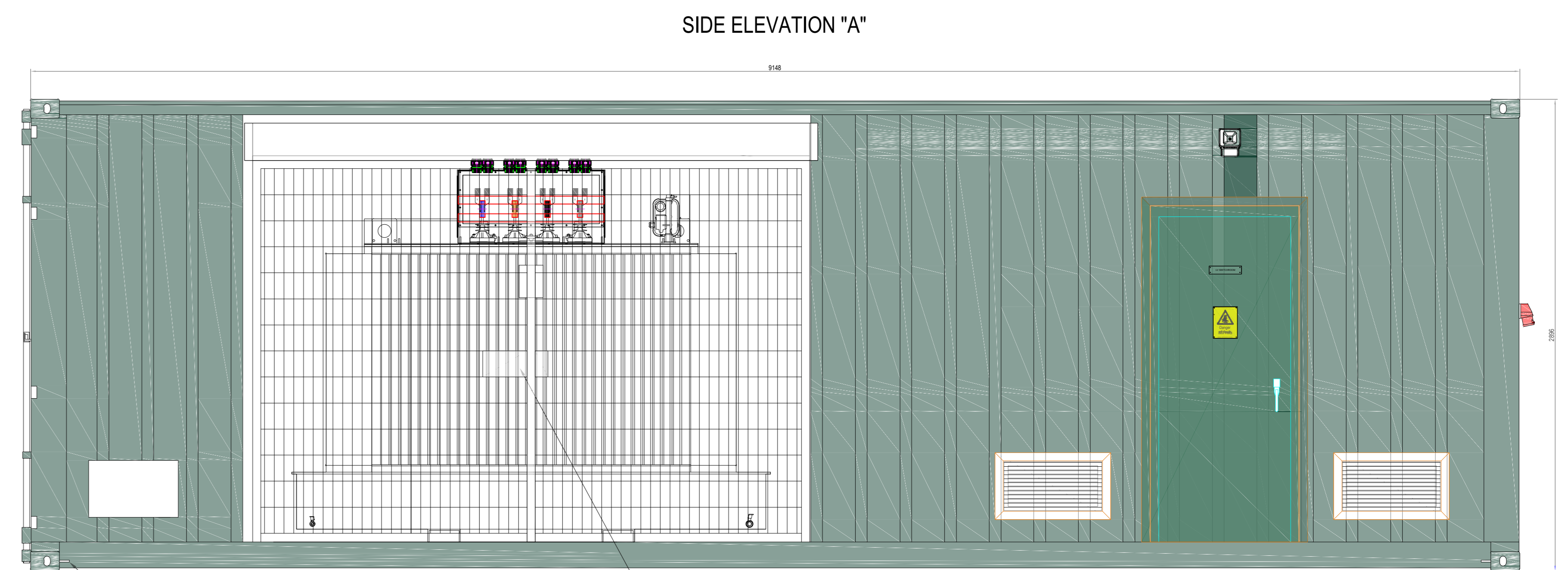


- NOTES**
- INTERNAL WIRING ENCLOSED WITHIN TRUNKING OR CONDUIT.
  - INTERNAL PANIC LATCHES ON ALL ACCESS DOORS.
  - ROOF & WALLS INSULATED MULTIPRO\_XS TO 0.45/Wm<sup>2</sup>. TRANSFORMER SECTION UNINSULATED WITH GRAFOTHERM ROOF AND TOP PART WALLS
  - FLOOR TO BE DURBAR
  - PAINTED FINISH 2 PACK GREEN RAL6005

- EQUIPMENT KEY**
- LIGHT SWITCH
  - DOUBLE SWITCH SOCKET OUTLET
  - FROST STAT
  - HEATER
  - SMOKE DETECTOR
  - LVDB
  - MAINS/GENERATOR MANUAL CHANGEOVER PANEL
  - 6.3A 5PIN APPLIANCE INLET
  - 24VDC BATTERY CHARGER / MARSHALLING PANEL
  - TRANSFORMER
  - HVSB
  - 50kVA AUX TRANSFORMER
  - HELIOS HQW 250/2 AXIAL FAN
  - TME ROOM STAT
  - EPO
  - CLIENTS COMMS PANEL



SECTIONAL PLAN



EARTH STUDS IN ALL CORNERS

SIDE MESH DOORS TO BE HOT DIP GALVANIZED, REMOVABLE CENTER POST, HASP AND STAPLE FOR PADLOCKING BOTH SIDES.

ALL DIMENSIONS IN MILLIMETRES UNLESS OTHERWISE STATED

CHECK COPY  
ISSUED FOR INFORMATION



REV	DATE	DESCRIPTION	LD	CHK	APP
PA0.2	29.07.24	ISSUED FOR INFORMATION	LD	NA	BP
PA0.1	25.07.24	ISSUED FOR INFORMATION	LD	NA	BP
REV	DATE	DESCRIPTION	DRN	CHK	APP



Vital Energi, Century House, Roman Road, Blackburn, Lancashire, BB1 2LD  
Tel: +44 (0)1254 296 000 Fax: +44 (0)1254 296 040

Project: NANTYCAWS HWRC		Title: SUBSTATION ELEVATIONS	
DATE: 29.07.2024	SCALE: 1:20	SHEET: A0	Rev: 2
INFORMATION		Status: S2	Stage: 2
20335-VE-CR-XX-E-M-XX02		PA0.2	