

Planting Specification

All work and materials shall be in accordance with current British Standards components and to Code of Practice.

SITE CLEARANCE

- a - Remove general builders rubble, litter and any stones greater than 75mm in size from the areas to be planted. Such materials are to be collected and taken to the Contractors tip or disposed of on site as directed.

EARTHWORKS

Planting Areas

- a - Approved topsoil, both site won and imported, shall be led onto site and spread evenly on the approved formation to give a finished depth of 150mm for grassed areas, 450mm for shrub planted areas and 1000mm depth for tree pits. All topsoil to be placed on a minimum of 300mm depth of subsoil.

CULTIVATIONS AND PLANTING

- a - Shrub beds shall be cultivated prior to planting to produce a medium till and all weeds, stones and other debris arising from this work are to be collected and removed from site.

100mm. Resultant edges to be clean and straight or an even smooth radius. Edges to be left neat and tidy with ground on shrub side meeting cut face at an even gradient. All cuttings to be removed from site.

- a - A 50mm layer of matured conifer bark to be spread over planting areas and soil to be placed on a minimum of 300mm depth of subsoil.

Tree Planting - Planting Pits

- a - Excavate tree pits as follows:- Standard / Feathered trees - 1000 x 1000 x 1000mm Semi-mature trees - 1500 x 1500 x 1000

Final Cultivations

- a - The surface for seeding should be 25mm deep and free from weeds and stones.

Grass Seeding

- a - Areas for seeding to have topsoil depths of min. 150mm apart from wider areas where seed should be sown directly onto subsoil.

Minor Grading

- a - Finished levels of amenity grass areas to be 25mm above adjoining paving or kerbs. Levels to be arranged to give gentle falls for drainage purposes.

Sowing

Grass Seed Mixes

- a - Germination Seeds Ref: 'A22 Low Maintenance' sown at recommended rate of 50g/m<sup>2</sup> or similar approved.

Procedure

- a - The Contractor shall purchase fresh grass seed each season throughout the contract period. The grass seed shall be made up of certified seeds under EEC regulations.

- b - The Contractor shall be required to submit certificates for all deliveries of grass seed stating the seed source, mixture percentage, percentage purity and germination period.

Watering

- a - Contractor shall be entirely responsible for all watering necessitated by dry weather and it shall be undertaken by stationary rotary sprays.

MAINTENANCE

- a - The Contractor shall be responsible for the maintenance of the planting and grassed areas for a 12 month period following the completion of the works and will be responsible for any defects due to faulty materials, including plant failures, or workmanship during this time.

Defects Liability Period

- a - Any trees, shrubs and grass found to be defective or missing for any reason after practical completion shall be replaced by the Contractor entirely at his own expense.

Grass Subsidence/Damage

- a - Any subsidence of seeded or turfed areas below the specified levels shall be made good and re-seeded.

Mulch

- a - Bark mulch to be reinstated to original depths at the end of each growing season. Allow 1 no. visit per year.

Watering

- a - All planting shall be watered with a low pressure hose during dry spells, within the first year of growth only, at the following rates:- Feathered/standard trees - 36 litres/tree/visit

Fertiliser

- a - At the end of the establishment period, 30gms of slow release fertiliser to be applied around each plant. Allow 1 no. visit at end of Year 2

Grass Cutting

- a - Areas sown with amenity mix: 16no. visits between April and October. Grass areas to be cut to a height of c.60mm. NB in drought conditions adjust cutting heights to c.60mm.

Native Hedger

- a - All plants and tree stakes loosened by planting operations, wind or frost shall be firmed in. Allow 1 no. visit per year.

Litter Collection

- a - Whole site to be kept in a clean and tidy condition throughout the establishment period. Litter to be removed from site. Allow 20 no. visits a year with dead weed growth removed after allow 3 visits per year.

PLANTING SCHEDULE table with columns: Number, Species, Height, Pot Size, Specification, Density, Percentage Contribution

Native Hedger table with columns: Number, Species, Height, Pot Size, Specification, Density, Percentage Contribution

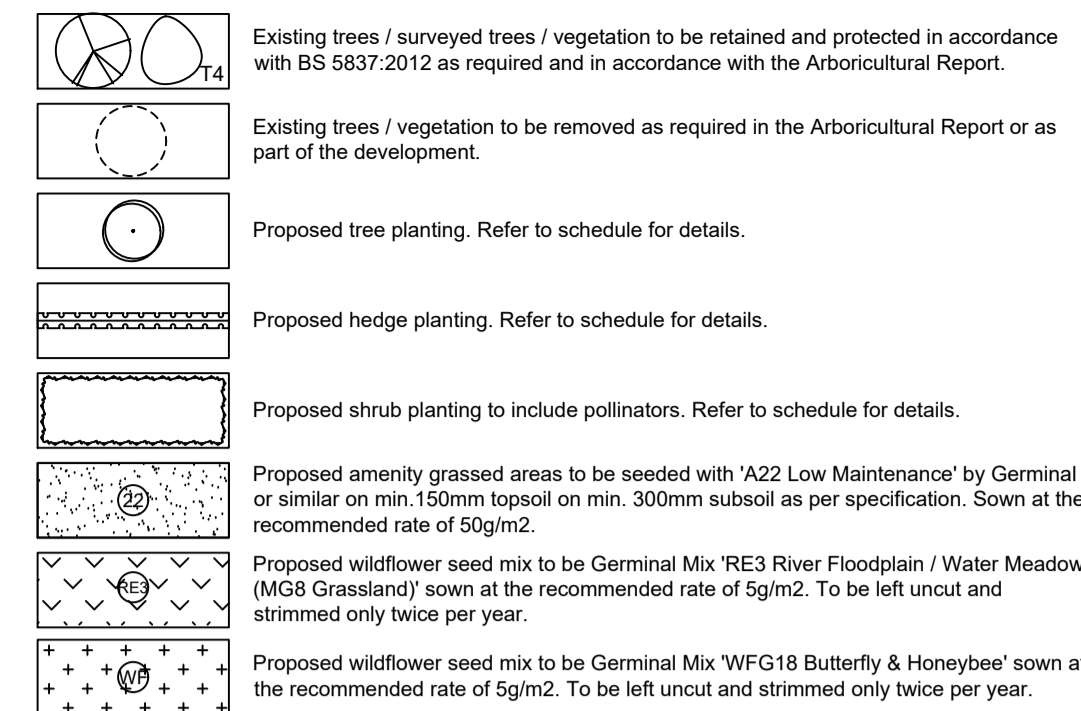
Rain Garden Mix 1 table with columns: Number, Species, Height, Pot Size, Specification, Density, Percentage Contribution

Rain Garden Mix 2 table with columns: Number, Species, Height, Pot Size, Specification, Density, Percentage Contribution

Rain Garden Mix 3 table with columns: Number, Species, Height, Pot Size, Specification, Density, Percentage Contribution

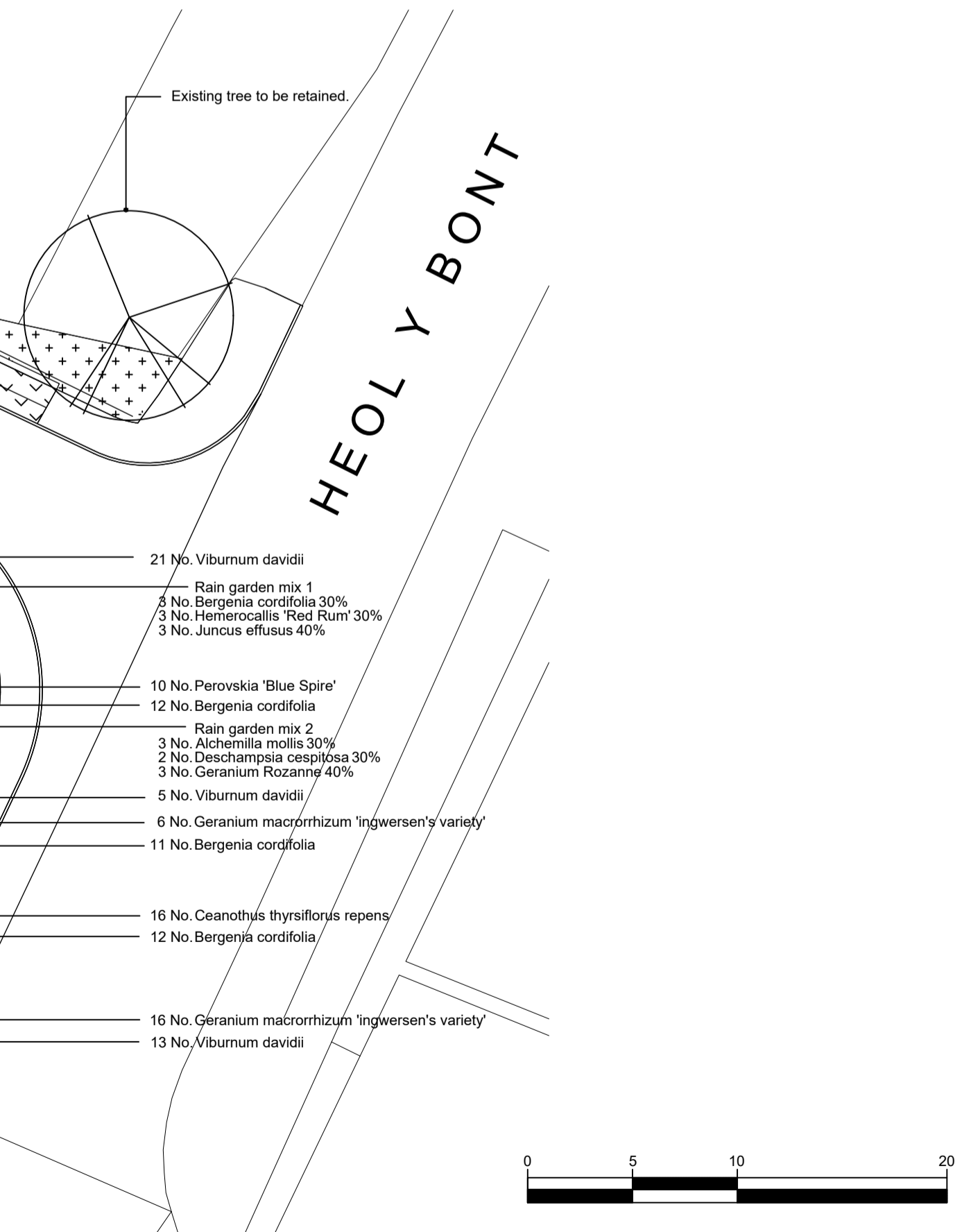
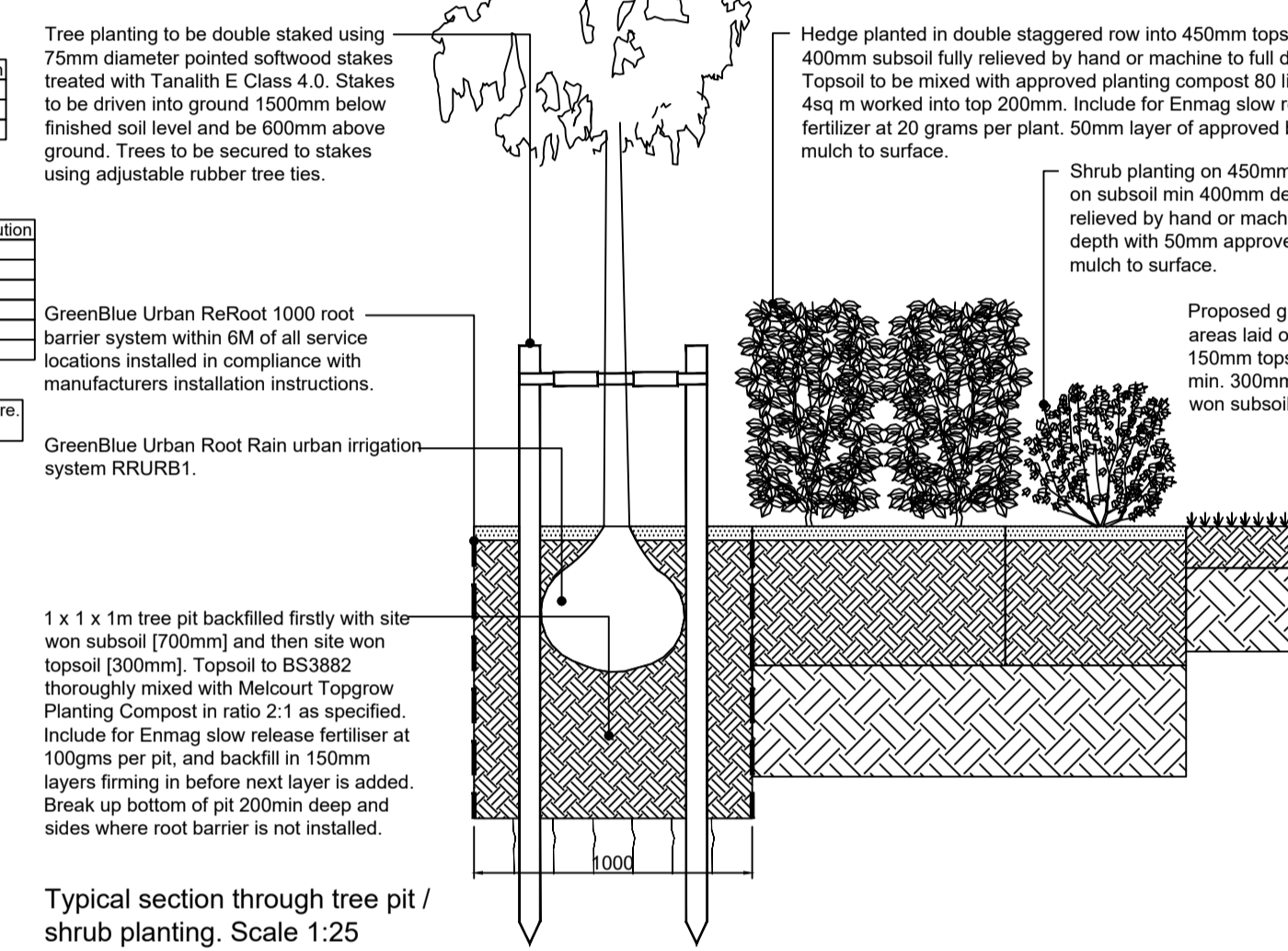
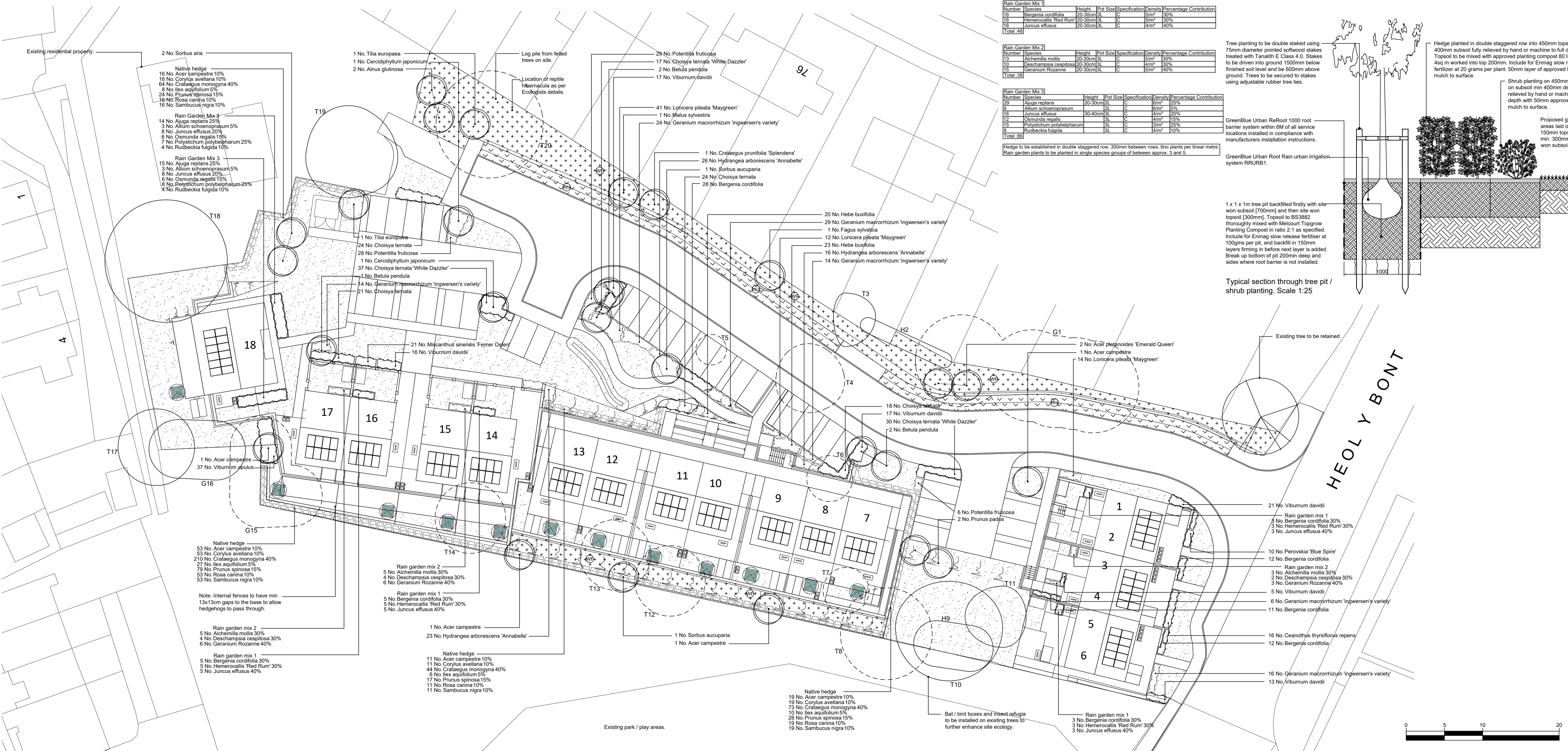
Hedge to be established in double staggered row, 300mm between rows. 6no plants per linear metre. Rain garden plants to be planted in single species groups of between approx. 3 and 5.

LEGEND



Notes about birds breeding season and tree removal: It is recommended that vegetation which needs to be removed is done prior to the bird breeding season, [1st March to 31st August].

If birds are found to be breeding in the vegetation which needs to be removed then vegetation removal in the area surrounding the nest must be delayed until the eggs have hatched and the young birds have left the nest.



Project summary and metadata including: REV. DESCRIPTION, DATE, REV. DESCRIPTION, DATE, REV. DESCRIPTION, DATE; IMPORTANT CDM / H&S NOTE; PROJECT: Former Care Home, Bodlondbe, Penparcau; DRAWING TITLE: Soft Landscape Proposals; DRAWING No: 1194.01 Rev B; SCALE (A1): 1:250; DATE: Sep/23; DRAWN: LH; CHKD: DP.