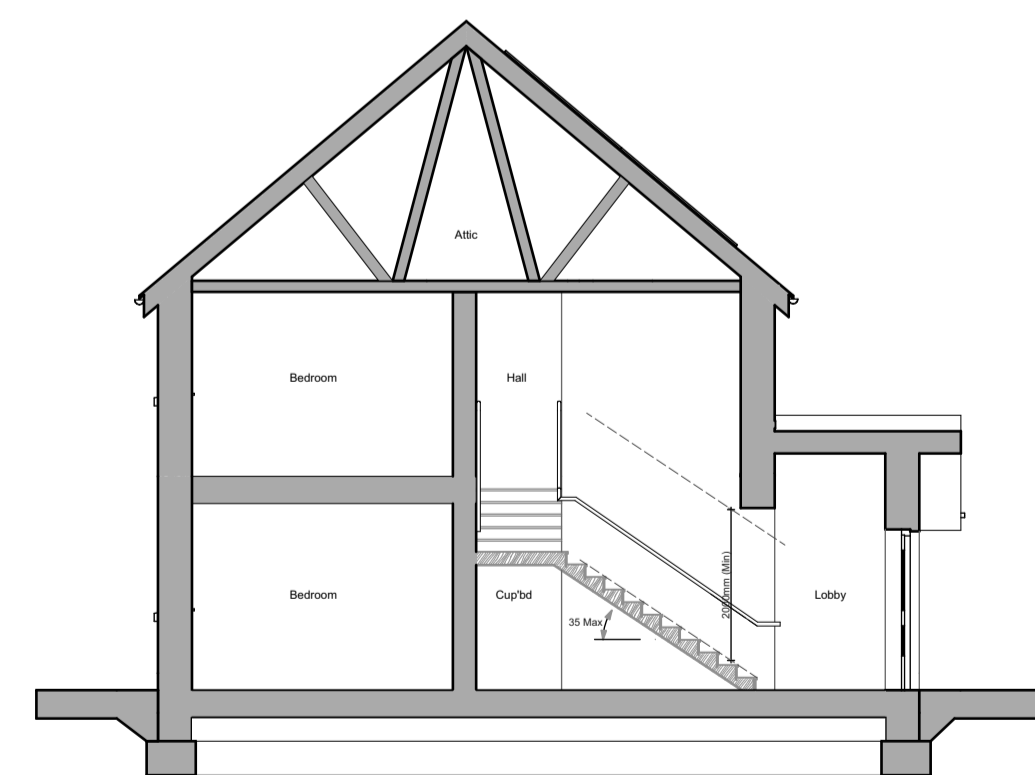
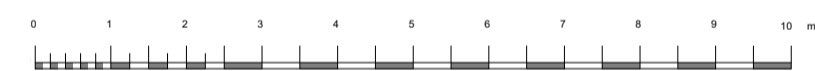
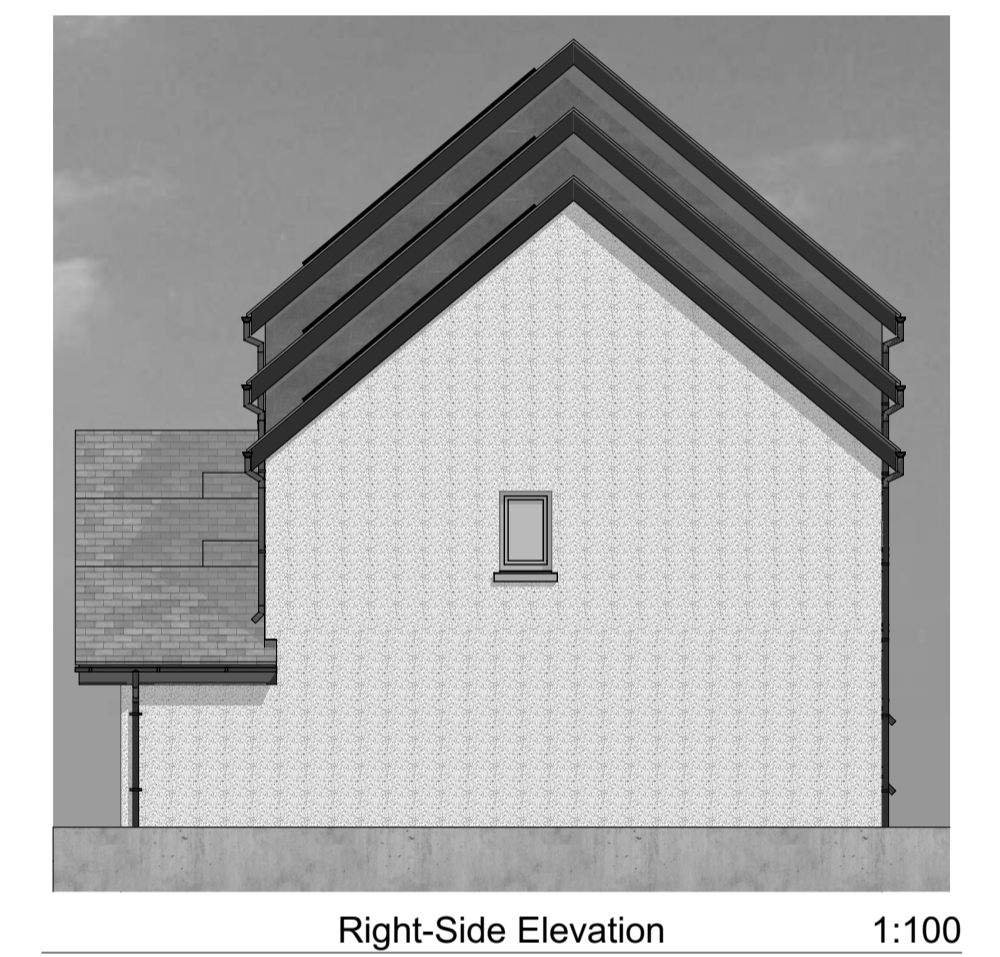
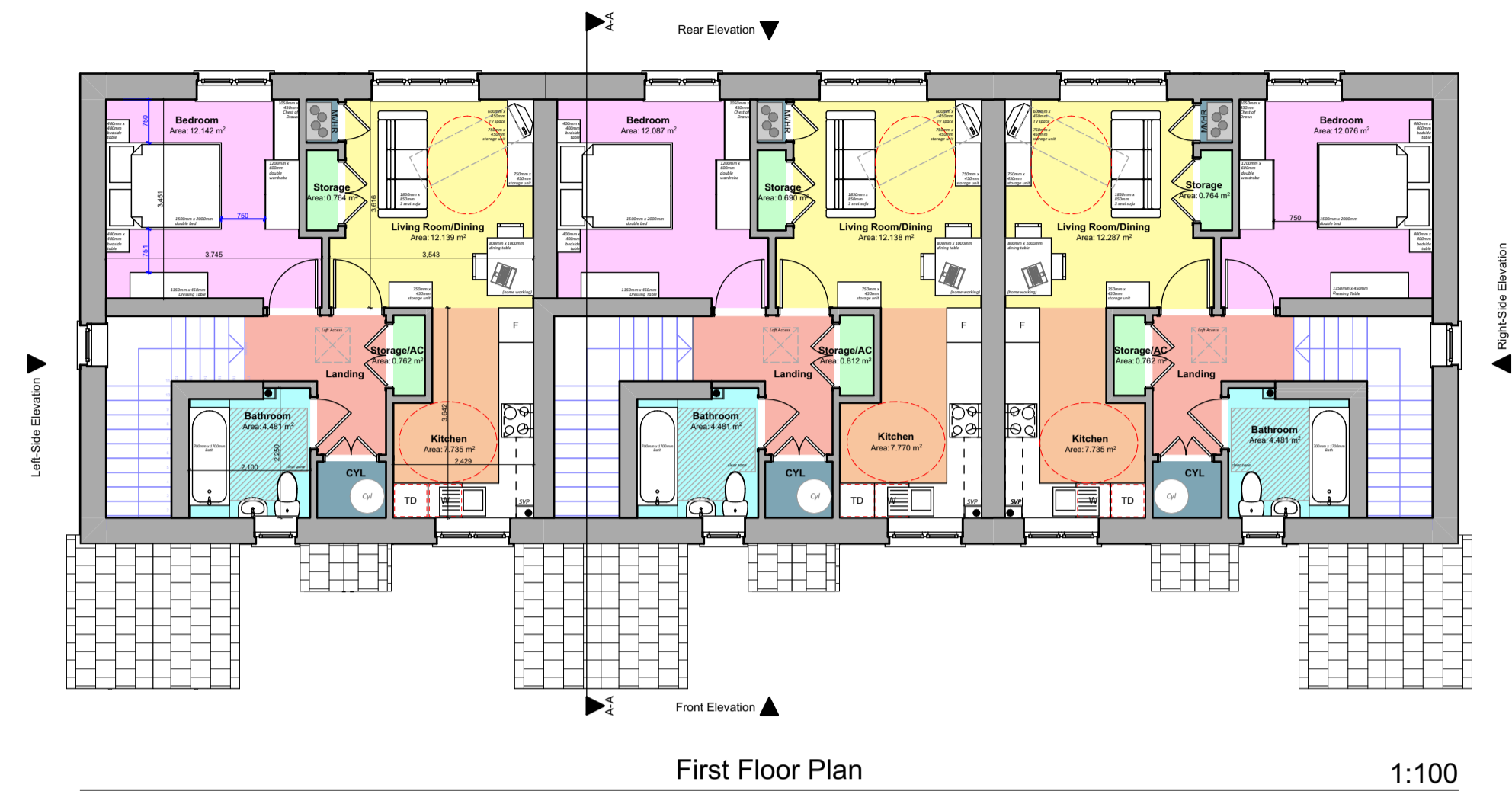


# Proposed Affordable Housing Development, Former Care Home, Bodlondeb, Penparcau, Aberystwyth, SY23 1SJ

## "Planning Drawings" - 2P1B Terraced Flats Plots 1-6



**Floor Areas:**  
 Total Gross Internal Ground Floor Area = 50.789m<sup>2</sup> (546.688sqft)  
 Total Gross Internal First Floor Area = 57.107m<sup>2</sup> (614.695sqft)  
 Total Gross Average Floor Area = 53.948m<sup>2</sup>

**Storage Areas:**  
 [Required Storage Space = 1.5m<sup>3</sup>]  
 Ground Floor Storage Area = 2.99m<sup>2</sup>  
 [Required Storage Space = 1.5m<sup>3</sup>]  
 First Floor Storage Area = 1.5m<sup>2</sup>



|   |                |       |   |
|---|----------------|-------|---|
| Revision:   | Date:          | By:   | Notes:  |
| REV A - Minor layout amendment and internal dimensions added. | 27th June 2024 | KP/SE | 1. To be read in conjunction with 'proposed house type external finishes site plan' dwg. no. R444 P-06 for individual plot finishes.<br>2. To be read in conjunction with 'proposed house type external finishes drawing' dwg. no. R444 P-07. |



Client:  
Tai Wales & West  
Housing Association

Scale: Noted  
Date: June '24  
Drawn: SE/RH

Drawing Title:  
PLANNING DRAWINGS -  
2P1B Terraced Flats -  
Floor Plans, Elevations & Section

Job Title:  
Proposed Affordable Housing Development, Former Care  
Home, Bodlondeb, Penparcau, Aberystwyth, SY23 1SJ

**R444 P-09A**