

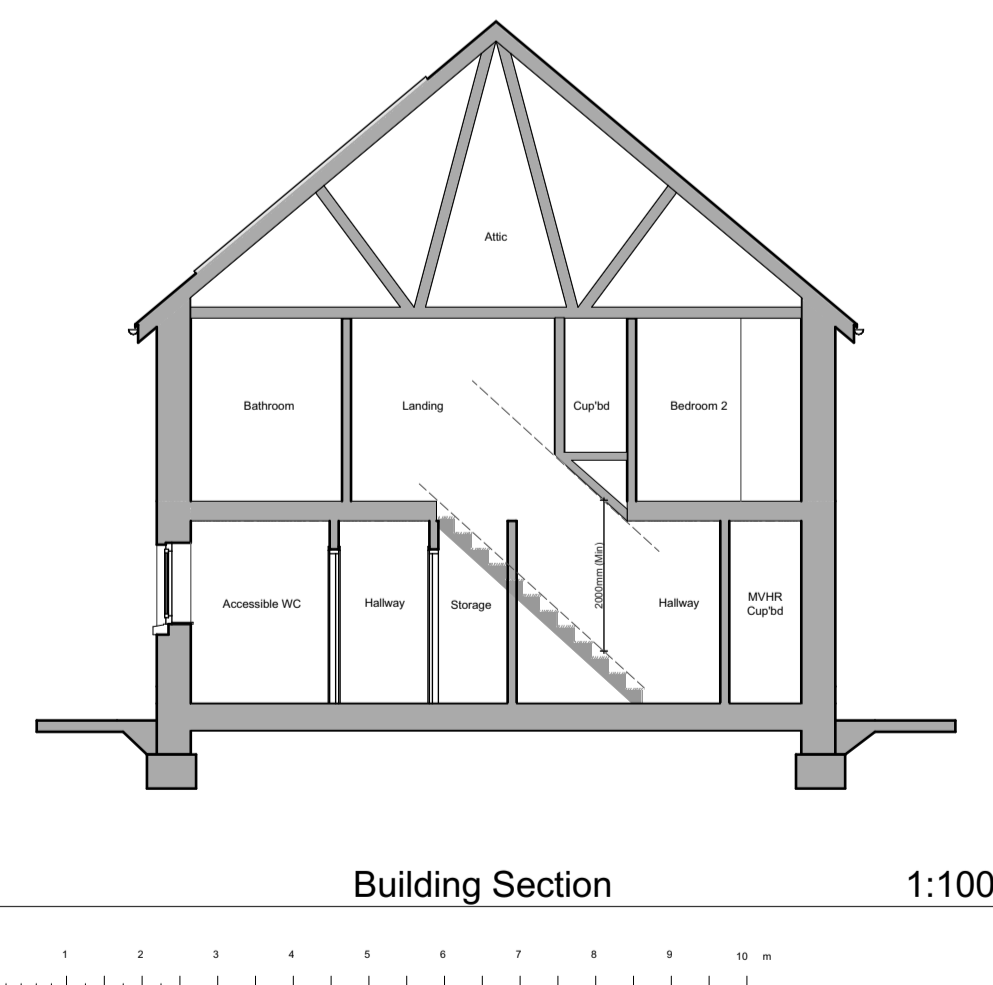
Proposed Affordable Housing Development, Former Care Home, Bodlondeb, Penparcau, Aberystwyth, SY23 1SJ

"Planning Drawings" - 4P2B Semi Detached Affordable House Plots 10 & 11, 12 & 13



Floor Areas:
 Total Gross Internal Ground Floor Area = 41.811m² (450.050sqft)
 Total Gross Internal First Floor Area = 41.811m² (450.050sqft)
 Total Gross Internal Area = 83.622m² (900.100sqft)

Storage Areas:
 [Required Storage Space = 2.5m³] (Excluding M&E Plant)
 Ground Floor Storage Area = 0.8m²
 First Floor Storage Area = 1.8m²
 Total dwelling Storage Area = 2.6m²



Revision:	Date:	By:
REV A - Minor layout amendment and internal dimensions added.	27th June 2024	SE
REV B - Updates to bedroom layouts based on WG Feedback	12th Aug 2024	SE

- Notes:**
- To be read in conjunction with 'proposed house type external finishes site plan' dwg. no. R444 P-06 for individual plot finishes.
 - To be read in conjunction with 'proposed house type external finishes drawing' dwg. no. R444 P-07.



Client: Tai Wales & West Housing Association	Scale: Noted Date: June '24 Drawn: SE/RH	Drawing Title: PLANNING DRAWINGS - 4P2B Semi-Detached House - Floor Plans, Elevations & Section
Job Title: Proposed Affordable Housing Development, Former Care Home, Bodlondeb, Penparcau, Aberystwyth, SY23 1SJ	R444 P-10B	