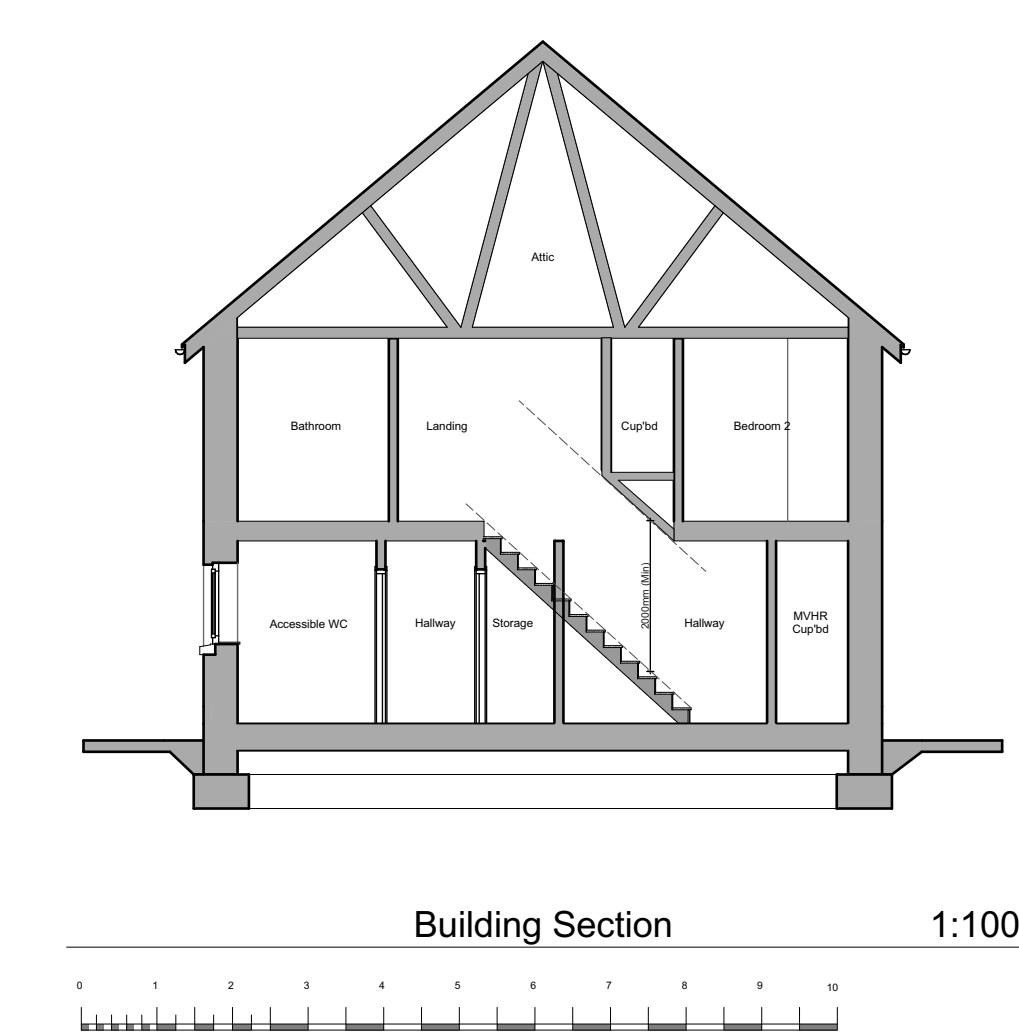
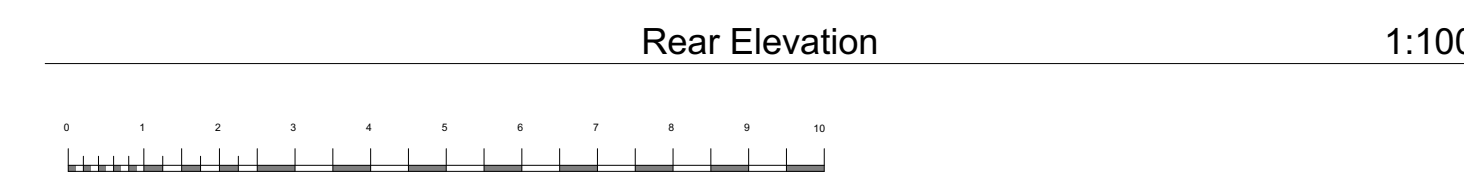
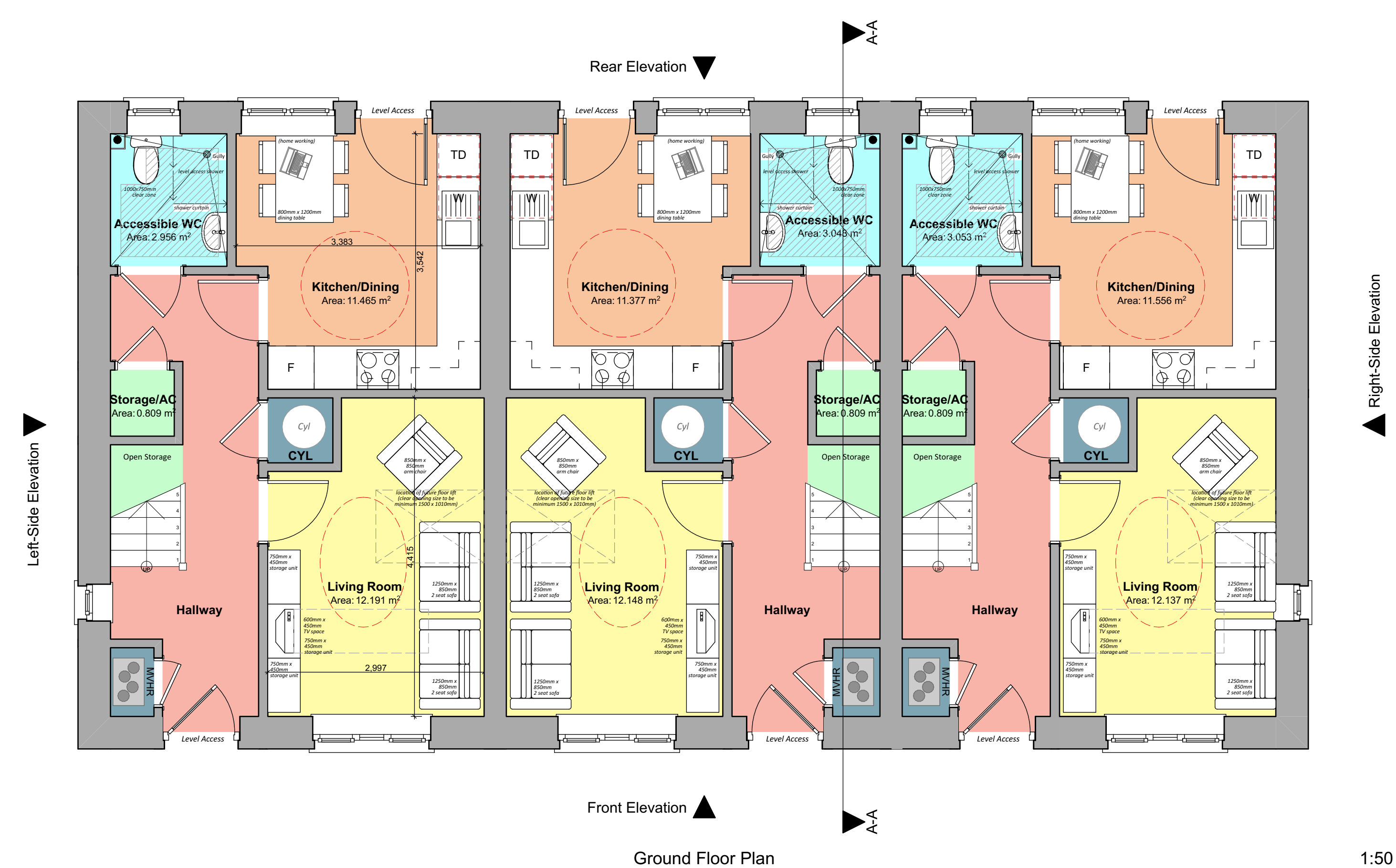
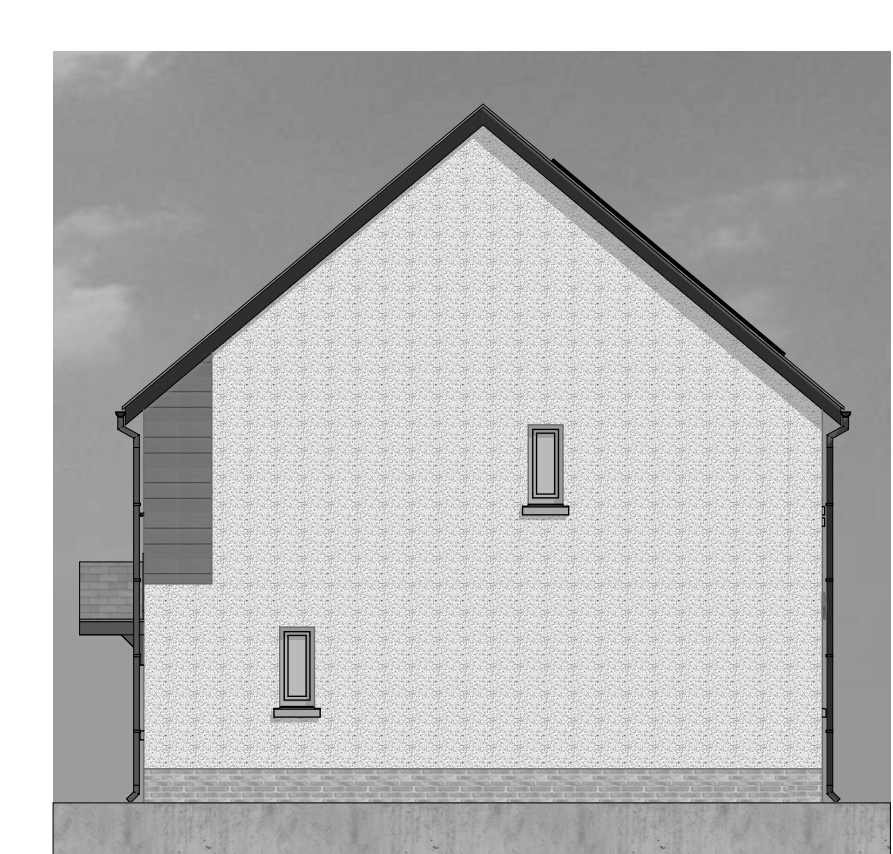
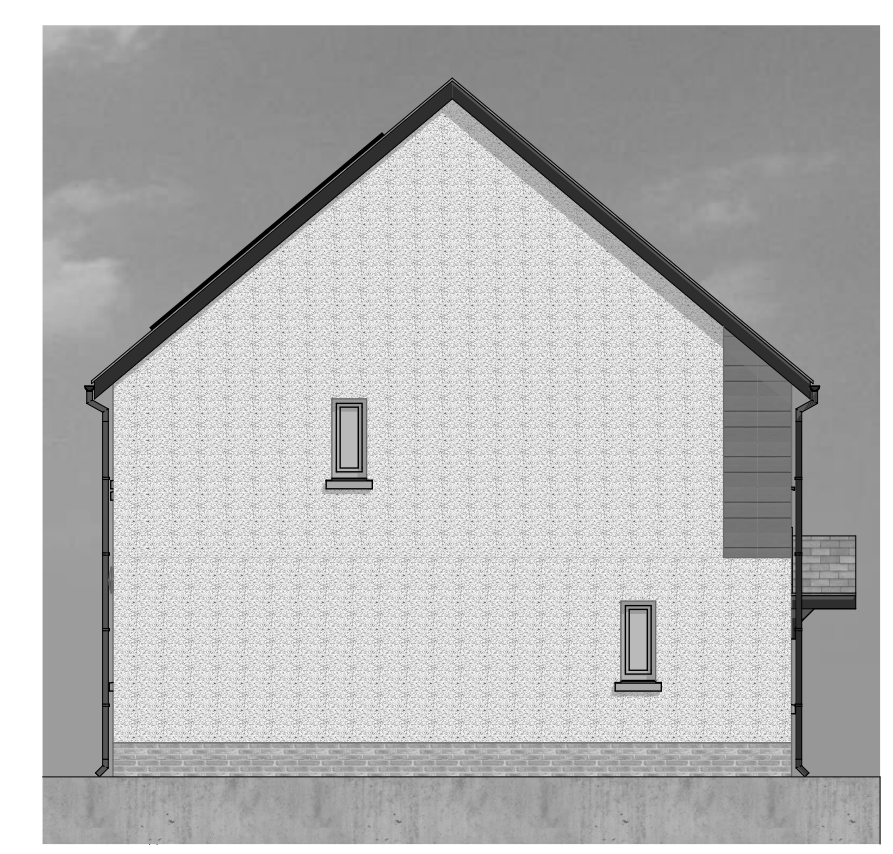
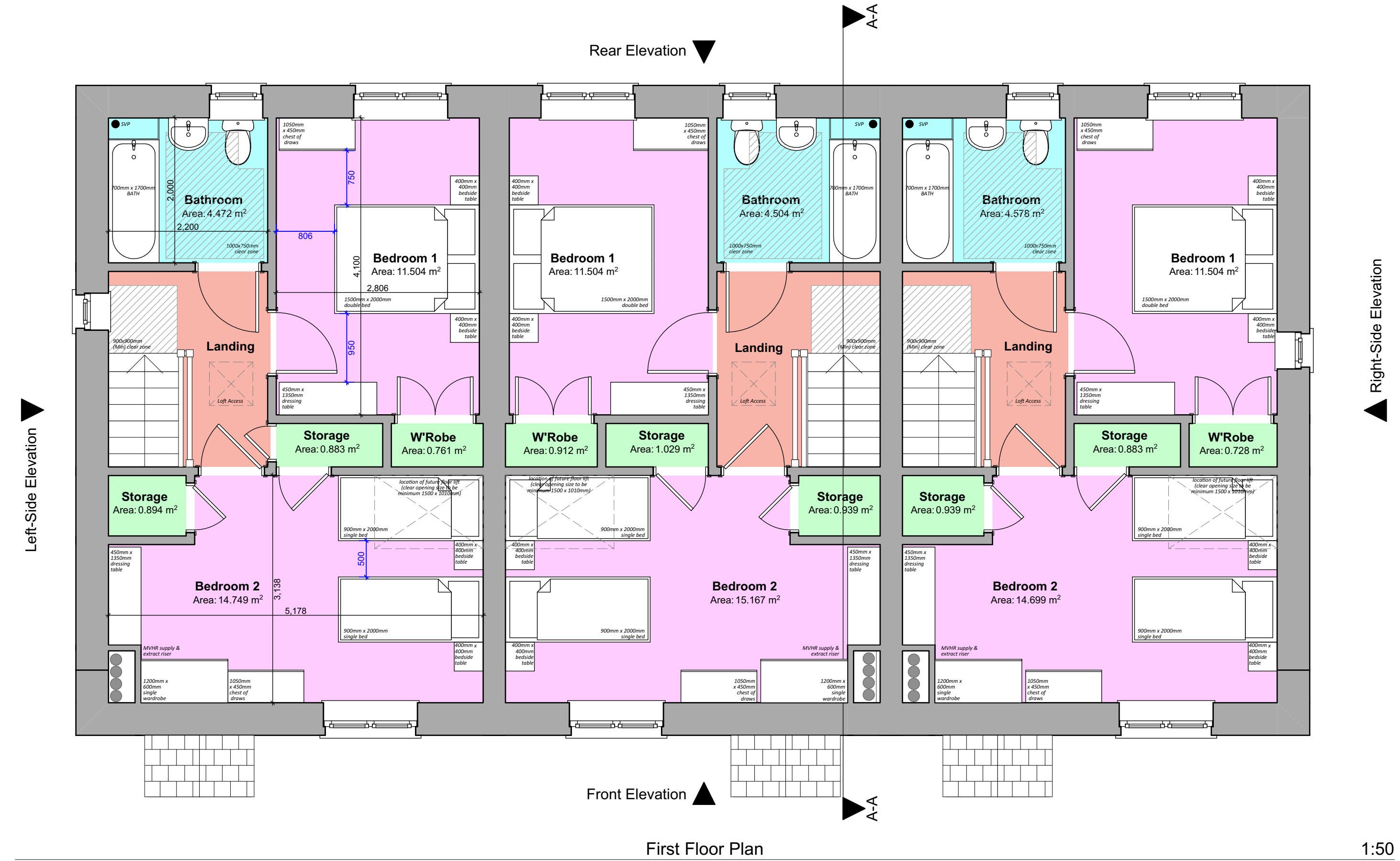


Proposed Affordable Housing Development, Former Care Home, Bodlondeb, Penparcau, Aberystwyth, SY23 1SJ

"Planning Drawings" - 4P2B Terraced House Plots 7-9



Floor Areas:

Total Gross Internal Ground Floor Area	= 41.811m ² (450.050sqft)
Total Gross Internal First Floor Area	= 41.811m ² (450.050sqft)
Total Gross Internal Area	= 83.622m² (900.100sqft)

Storage Areas:

[Required Storage Space = 2.5m²] [Excluding M&E Plant]

Ground Floor Storage Area	= 0.8m ²
First Floor Storage Area	= 1.8m ²
Total dwelling Storage Area	= 2.6m²

Revision:	Date:	By:	Notes:
REV A - Minor layout amendment and internal dimensions added.	27th June 2024	SE	1. To be read in conjunction with 'proposed house type external finishes site plan' dwg. no. R444 P-06 for individual plot finishes.
REV B - Updates to bedroom layouts based on WG Feedback	12th Aug 2024	SE	2. To be read in conjunction with 'proposed house type external finishes drawing' dwg. no. R444 P-07.



Client: Tai Wales & West Housing Association	Scale: Noted Date: June '24 Drawn: SE/RH	Drawing Title: PLANNING DRAWINGS - 4P2B Terraced House - Floor Plans, Elevations & Section
Job Title: Proposed Affordable Housing Development, Former Care Home, Bodlondeb, Penparcau, Aberystwyth, SY23 1SJ	R444 P-11B	