

# Proposed Affordable Housing Development, Former Care Home, Bodlondeb, Penparcau, Aberystwyth, SY23 1SJ

## "Planning Drawings" - 5P3B Semi-Detached House Plots 14-17



Front Elevation 1:100



Left-Side Elevation 1:100



Rear Elevation 1:100



Right-Side Elevation 1:100

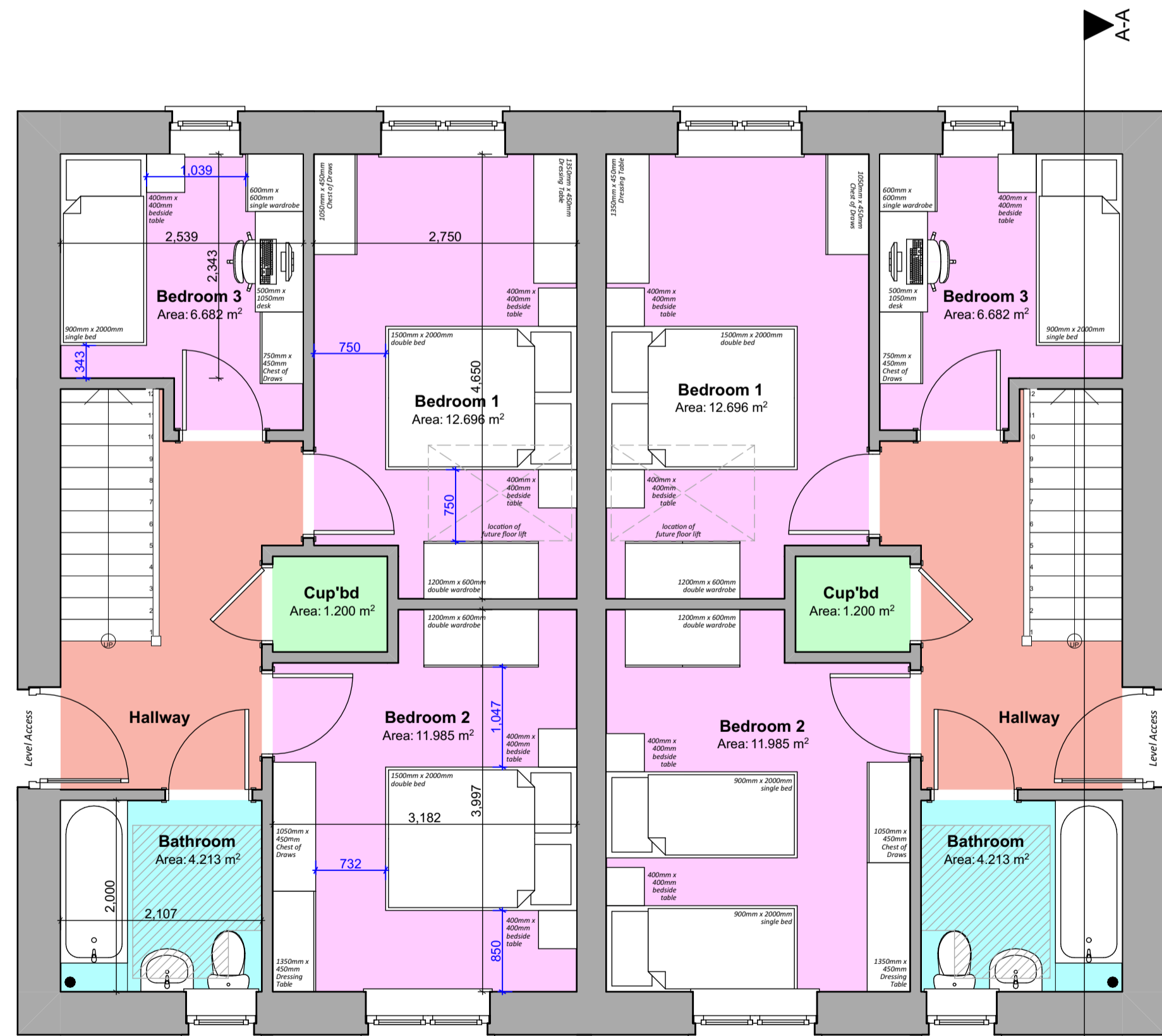
'Dawn to Dusk' Light fitting (above door)

'Dawn to Dusk' Light fitting (above door)

'Dawn to Dusk' Light fitting (above door)

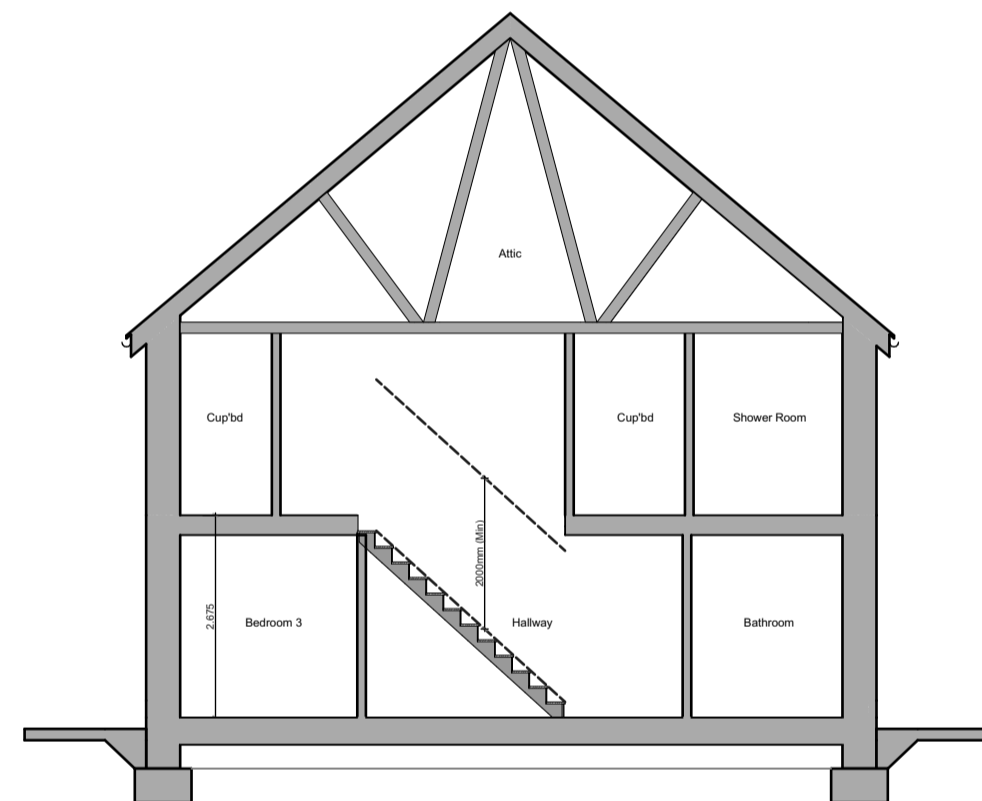
'Dawn to Dusk' Light fitting (above door)

Rear Elevation ▼



Front Elevation ▲

Ground Floor Plan 1:50

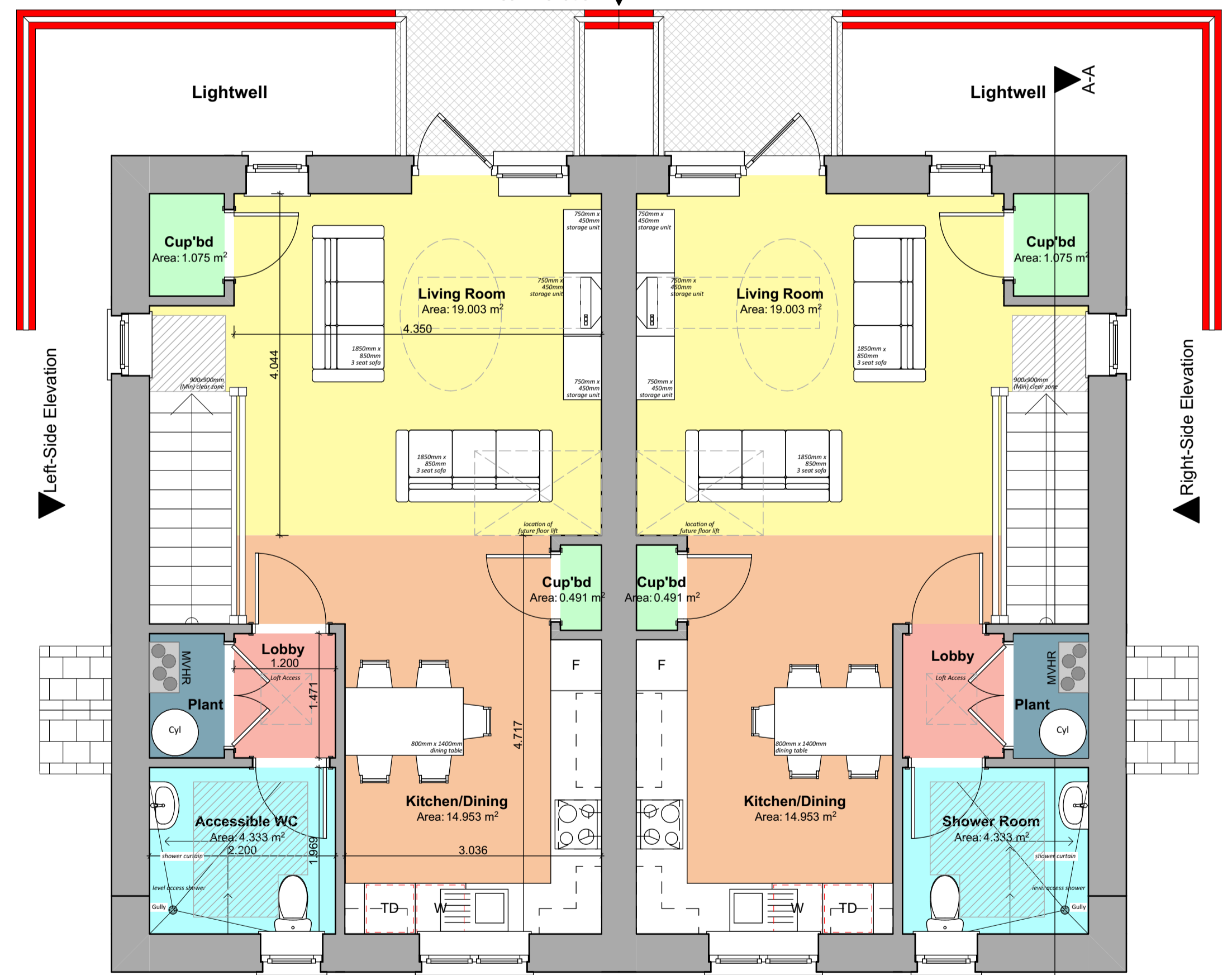


Building Section 1:100

**Floor Areas:**  
 Total Gross Internal Ground Floor Area = 47.329m<sup>2</sup> (509.445sqft)  
 Total Gross Internal First Floor Area = 47.329m<sup>2</sup> (509.445sqft)  
 Total Gross Internal Area = 94.658m<sup>2</sup> (1018.890sqft)

**Storage Areas:**  
 [ Required Storage Space = 2.5m<sup>2</sup> ] (Excluding M&E Plant)  
 Ground Floor Storage Area = 1.2m<sup>2</sup>  
 First Floor Storage Area = 1.56m<sup>2</sup>  
 Total dwelling Storage Area = 2.76m<sup>2</sup>

Rear Elevation ▼



Front Elevation ▲

First Floor Plan 1:50

Revision:	Date:	By:	Notes:
REV A - Minor layout amendment and internal dimensions added.	27th June 2024	SE	1. To be read in conjunction with 'proposed house type external finishes site plan' dwg. no. R444 P-06 for individual plot finishes.
REV B - Amendment to stair configuration.	4th July 2024	SE	2. To be read in conjunction with 'proposed house type external finishes drawing' dwg. no. R444 P-07.
REV C - Updates to bedroom layouts based on WG Feedback	12th Aug 2024	SE	



Client: Tal Wales & West Housing Association  
 Scale: Noted  
 Date: June '24  
 Drawn: SE/RH  
 Job Title: Proposed Affordable Housing Development, Former Care Home, Bodlondeb, Penparcau, Aberystwyth, SY23 1SJ  
 Drawing Title: PLANNING DRAWINGS - 5P3B Semi-Detached House - Floor Plans, Elevations & Section  
**R444 P-12C**