

**CONSTRUCTION (DESIGN AND MANAGEMENT)
REGULATIONS 2015**

**DEMOLITION PHASE PLAN
METHOD STATEMENT & RISK ASSESSMENTS**



Former Care Home Bodlondeb, Penparcau , Aberystwyth , SY23 1SJ

Remove and dispose of Asbestos material in accordance with the Control of Asbestos Regulations, 2012. Demolish building. Remove, slabs foundations, and tarmac hard-standings. Crush all brick/block/concrete and remove from site Remove all other waste arising from the site.

For


***Wales and West Housing
West Office
Cwrt y Llan
Church Lane
Newcastle Emlyn
SA38 9AB***

***L.G. Murphy (Swansea) Limited
Unit 11, Prospect Park,
Queensway,
Fforestfach,
Swansea,
SA5 4ED***

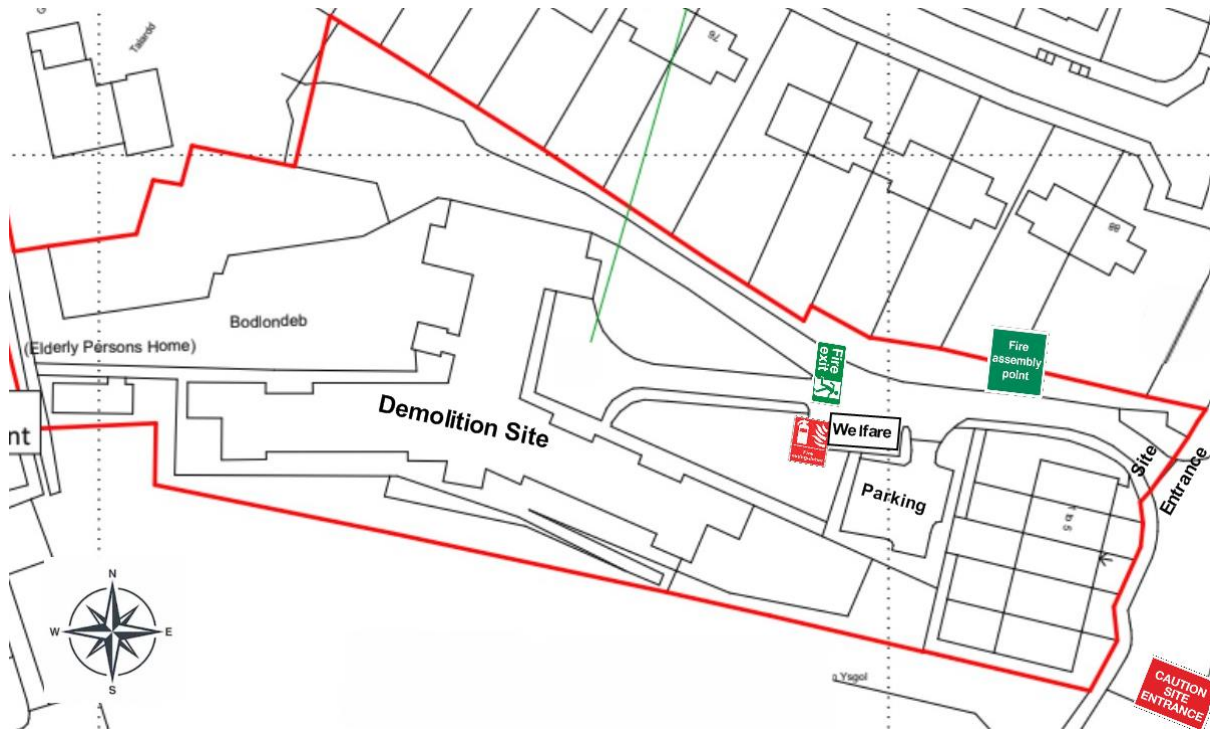
Project Title Former Care Home Bodlondeb Penparcau , Aberystwyth , SY23 1SJ **Document ref** : LGM/29/05/24

Document Title: Demolition Phase Plan

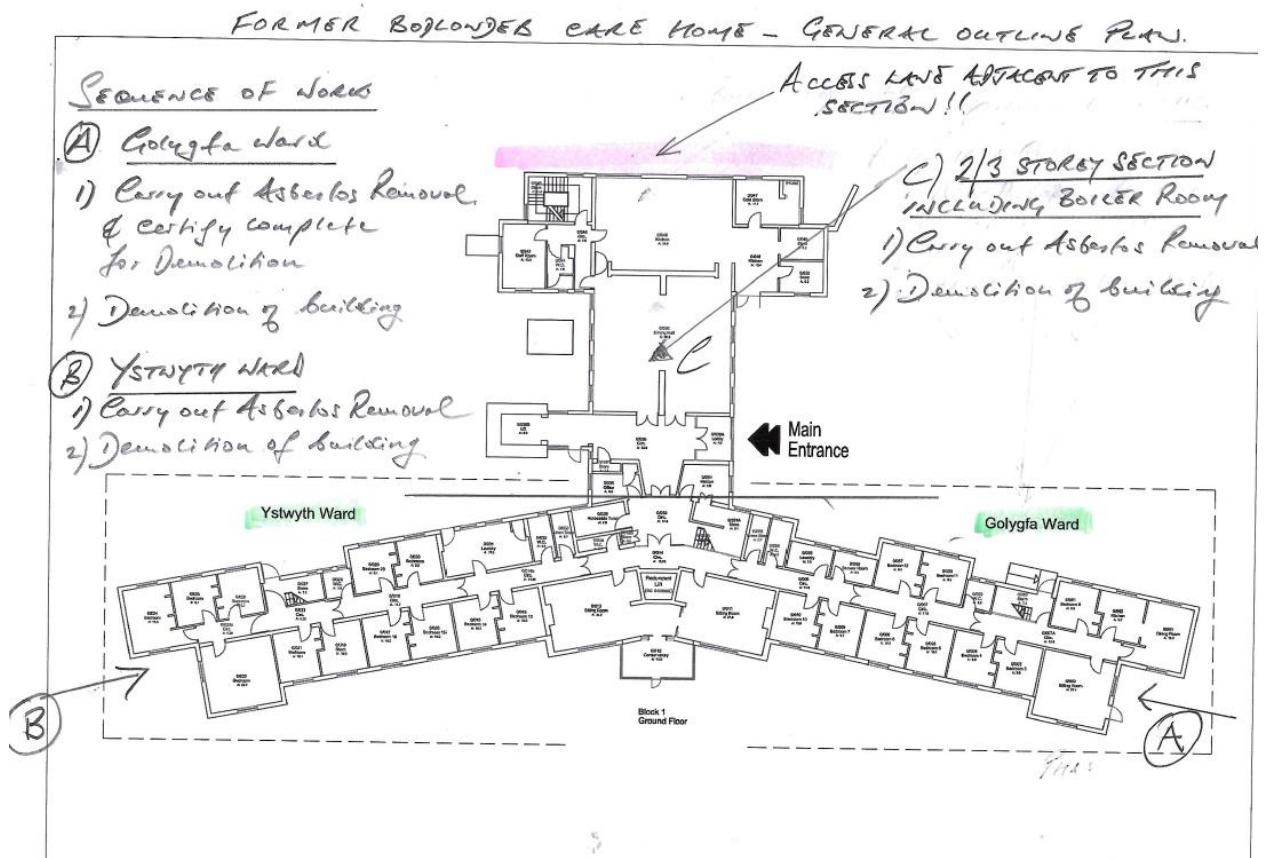
Client: Wales and West Housing, West Office, Cwrt y Llan, Church Lane, Newcastle Emly, SA38 9AB

Revision	Date	File			
0	May 29 th 2024	Description	Issue 1		
			Approvals and Conformance:		
			Construction (Design and Management) Regulations, 2015 – Regulation 12 – Construction Phase Plan. The Health and Safety at Work etc Act 1974		
			Copyright		
			Demolition Phase Plan Document - Format and Narrative: Copyright © Moorgate Consulting. All Rights Reserved. Copyright, Designs and Patents Act 1988. Exceptions within document: Covid-19 Notice – Gov Uk document.		
			Prepared by	Assessed by	Approved by
		Name Position	P. Wilson	M. Williams	P. Wilson Consultant
					

Demolition Site Layout



Demolition/Asbestos Removal Sequence Plan



DEMOLITION PHASE PLAN

PROJECT: Former Care Home Bodlondeb Penparcau , Aberystwyth , SY23 1SJ

Remove and dispose of Asbestos material in accordance with the Control of Asbestos Regulations, 2012. Demolish building. Remove, slabs foundations, and tarmac hard-standings. Crush all brick/block/concrete and remove from site. Remove all other waste arising from the site.

Site Plan and Photographs

Introduction

- 1.0 Project Details
- 2.0 Existing Structure
- 3.0 Site Constraints
- 4.0 Demolition Methods
- 5.0 Site Wide Elements
- 6.0 Access and Vehicle Movements
- 7.0 Environment
- 8.0 Site Rules
- 9.0 Signs and Notices
- 1.0 RIDDOR
- 11.0 Provision of Health and Safety Information and Training
- 12.0 Arrangements for Making Site Rules
- 13.0 On Site Consultation
- 14.0 On Site Communication
- 15.0 Monitoring Arrangements
- 16.0 Fire Precautions
- 17.0 First Aid Arrangements
- 18.0 Continuing liaison
- 19.0 Safety File

APPENDICES

- Appendix 1: CDM 2015 Company Statement
- Appendix 2: Site Rules and Fire Action Notices
- Appendix 3: Risk Assessments and Method Statements
- Appendix 4 Traffic Management Plan

References:

Pre-constructing Information : Ref :

https://drive.google.com/drive/folders/1I7NB8UoK4JnruH_h9VU7UKWfihdzlonD?usp=drive_link

Bat Survey: Ref: IG2023FormerBodlonebCareHome - I&G Ecological Consulting Ltd, Awelfryn, Llannon, Llanelli, Carmarthenshire, SA14 6BY. Dated 18/09/2023

INTRODUCTION

This Demolition Phase Plan has been developed based on information supplied by the Client: Wales and West Housing, West Office, Cwrt y Llan, Church Lane, Newcastle Emly, SA38 9AB

The demolition works will be carried out in accordance with the requirements of the 'Construction (Design and Management) Regulations, 2015. The Client has been aware of his duties with respect to the CDM Regulations and the requirement to provide information to the Principal Contractor to assist in the preparation of this Demolition Phase Plan.

The demolition phase will be managed by L. G. MURPHY (Swansea) LIMITED as Principal Contractor.

The removal of asbestos material identified during a Refurbishment/Demolition survey will be carried out and disposed of in accordance with the 'Control of Asbestos, Regulations, 2012. Clearance/Completion Certificate to be provided. to the Principal Contractor .

The Company's nominated Health and Safety Consultants Moorgate Consulting have assisted in the development and production of this Health and Safety Plan.

PROJECT MANAGEMENT TEAM

Andrew Murphy	-	Project /Site Manager (07774 730276) E-mail: andrew.lgmurphy@btconnect.com
Geraint Williams	-	Contracts Manager (07968 750232) E-mail: geraint.williams@live.com
Ryan Parry	-	Development Project Manager : 07484 534098 E mail : ryan.parry@wwha.co.uk
Lee Hickman:	-	RDM Environmental Ltd 07368 292234 E-mail: Lee.H@rdmenv.co.uk
Moorgate Consulting.	-	Safety Consultants (07964 106 382) E-mail: consulting@moorgate-london.com

1.0 PROJECT DETAILS

Project Start Date:TBA

Project Duration: TBA

Minimum Mobilisation Period: 2 weeks

2.0 EXISTING STRUCTURE AND ENVIRONMENT

2.1 Drawings

Site plans and drawings have been made available by the Client. The Principal Contractor's management have visited the site to carry out a survey of the building and familiarise themselves with the site including the structural condition and design of the building.

2.2 Buildings – General Description

A large modern detached, brick-built building with cavity walls which is two /three storeys in height with a single pitch metal roof supported of off timber rafters off load bearing walls

2.3 Services

The Client will arrange for the disconnection/isolation services prior to the commencement of Asbestos removal and demolition works. **Certificates of power and gas services (where applicable)isolation/disconnection signed by competent qualified electrical /gas engineers are required to be made available to LG. Murphy (Swansea) Limited prior to works starting..**

L. G. Murphy (Swansea) Limited will carry out a survey of all possible services that may be present in the work area.

All possible measures will be taken to prevent any plant or personnel coming into contact with any services.

All operatives will be briefed as to the whereabouts of any underground or overhead services.

3.0 SITE CONSTRAINTS

3.1 Site Entrance. Left turn only onto /off A4120 when entering and leaving the site. Car exercised when plant is entering and exiting the site.

3.2 All carriageways and car parking areas will be kept open and free of contractors vehicles at all times, unless otherwise agreed. No car parking will be permitted on highways or pavements.

3.3 Site Security

Principal Contractor will ensure the security of the construction area especially those areas adjacent to nearby roads and footpaths.. All demolition plant will be locked and secured out of hours and ignition keys removed.

3.4 Visitors

LG. Murphy assume exclusive access to the site. Visitors wishing to visit the demolition site will be recorded in the site logbook and site inducted and provided where necessary with minimum PPE consisting of Hi-Vis vest, head, foot and eye protection. They will be accompanied at all times by the Site Manager and Banksmen will be informed of their presence and departure from the demolition site.

3.5 Hazardous Materials

Following a Renovation/Demolition Asbestos Survey asbestos materials identified to be removed by RDM Environmental Limited in accordance with the Control of Asbestos Regulations, 2012. Clearance/completion certificate to be provided. to the Principal Contractor who will take all appropriate precautions to protect employees and the public from any risk if further asbestos is found on site. In the event suspicious material is found operatives are trained to stop work and report to their supervisor for the material to be investigated. Any other hazardous materials such as gas cylinders will be removed prior to demolition works starting and disposed of to a licensed hazardous waste site.

Risk from Leptospirosis (Weils Disease).

Precautions identified with respect to this risk arena included in the Risk Assessments. Apart from diesel fuel no other hazardous material will be brought onto site.

4.0 DEMOLITION METHODS

In Project Managing the demolition site, Andrew Murphy, Project Manager/Demolition Site Supervisor will ensure all necessary precautions are adopted to ensure **structural stability throughout** and **progressive** and **controlled reduction** of the building takes place without hazard or damage to others or adjacent properties. These will be identified in written systems of work including Method Statement and Risk Assessments. All demolition pre-planning, planning and work stages will be carried out in accordance with the principles laid down in British Standard BS6187-2011

The Principal Contractor is fully aware of the other hazards associated with demolition works including, dust, noise, hazardous materials, manual handling, structural stability, falling materials, traffic, plant movement, working at height and will take all suitable precautions necessary.

5.0 SITE WIDE ELEMENTS

5.01 Works The site is located in a suburban residential area .

5.02 Temporary Site Accommodation

Welfare and toilet facilities will be made available at the site. by the PC. The facilities will conform to the requirements of the Construction (Design and Management) Regulations 2015 – Regulations 4(2)(b),13(4)(c) and 15(11)

5.03 Working Hours: (to be agreed with the Client's representative)

Mon to Friday 0800 – 1730 hours. Saturday 0800 – 1300 hours

5.04 Unloading, Loading and Storage of Materials and Arisings.

Space will be available within the site for manual/mechanical handling the loading of materials and arisings. No hazardous materials will be stored on site. These issues will be highlighted in Method Statements provided by the Principal Contractor. The timing of deliveries and movement of transport vehicles will be co-ordinated to avoid peak rush hour/school run times.

5.05 Control of Dust and Debris on site

The Principal Contractor is conscious of the existence of nearby residential, commercial properties including a Care Home, footpath and public roads and will take all steps to control dust and debris during demolition works. This will be achieved by damping down, covering or netting. The Principal Contractor will ensure the provision of a suitable Method Statement and Risk Assessments.

5.06 Sub- Contractors

There will be no sub-contracting of Demolition Work on this project. Sub-contractors working on site will be limited waste haulage under the control of the Principal Contractor. They are selected from an approved tender list following evaluation of H & S competence by means of an H & S questionnaire. They all receive full site induction.

6.0 ACCESS AND VEHICLE MOVEMENTS

6.01 Vehicular Access to the Site

The Principal Contractor notes the access and parking restrictions of the site as identified and will take all steps to limit any hazards and dangers to the general public. No parking will be permitted on adjacent highways.

Additional precautions will be taken when vehicles are entering and exiting the site, and these will be directed by a responsible Banksman The Principal Contractor will seek approval of his access requirements from the Client.

7.0 ENVIRONMENT

The Principal Contractor is aware of his duties under Environmental Law and will take all measures to avoid harm to the environment and ensure compliance with the Environment Act 2005.

Protection of sewer, manhole covers from the demolition works will be undertaken.

Demolition Protocol 8

The Principal Contractor has carried out a Pre-demolition Waste Audit of estimated quantities of waste arisings from the demolition works. These will be removed from site during the course of the works. The estimated quantities are incorporated in the attached Traffic Management Plan and reflect the number of lorry arrivals and departures required to remove the waste from the site. Recycling rates of 75% to 95% are confidently expected. Final quantities will be incorporated in the final Waste Management Plan issued to the Client at the end of the demolition phase.

Material	Estimated Quantities	Recycling Rate %
Brick/concrete/stone etc	2200 tonnes	95
Mixed Waste	120	75
Asbestos	TBA	0

8.0 SITE RULES

All staff will be informed at induction of the Site Rules and Emergency and Evacuation procedures. Rules that are in place for the site whilst works are in progress including draft site rules are contained wit this Plan.

9.0 SIGNS AND NOTICES

Signs and notices will be displayed around the site at the appropriate places.

Additional notices for display at site in the form of a Fire Action and Emergency Plan and Site Management Structure Notice are also contained within this plan for display on the Site Notice Board at the Site together with all other statutory Health & Safety documentation.

10.0 REPORTING OF INJURIES, DISEASES AND DANGEROUS OCCURRENCES REGULATIONS 2013

All accidents and incidents recorded in the site accident book shall be reported to our safety consultants Moorgate Consulting. They shall then advise / discuss with us the finding of the accident investigation. If it is reportable in accordance with the R.I.D.D.O.R. Regulations, they will attend site to carry out further investigations and to offer advice. All accidents and incidents will be reported to the Client.

Demolition Principal Contractor's Health & Safety Targets for the Project are:

- Promoting an actively positive safety culture.
 - No serious disabling injuries.
 - No long-term harm to health.
 - Aiming for zero Accident Frequency Rate whilst achieving below 0.1
-

11.0 PROVISION OF HEALTH AND SAFETY INFORMATION AND TRAINING

In addition to the points mentioned above under On-Site Communication, workers will only be allowed to undertake work that they have been suitably instructed and trained to do. Where statutory training is required copies of training certificates will be requested.

Pre-work briefings will take place at various stages of the project with all workers. The briefings will include:

- Method Statements
 - Risk Assessments
 - COSHH Assessments (if appropriate)
 - Safe Working Arrangements
 - Any other relevant information
-

12.0 ARRANGEMENTS FOR MAKING SITE RULES

The rules for the site are determined by the Principal Contractor based upon an assessment of risk and taking into account any significant hazards and any special problems identified by the Client together with any issues in respect to the existing environment identified in information supplied.

Consultation on the site rules is made with all concerned groups including the workforce.

The Site Rule Notice which is shown on page 10 is an example of the notice displayed at the site for the information of all workers, residents, the general public and visitors.

13.0 ON-SITE CONSULTATION

As this is a small site, all workers will have access to the site management to offer any views or concerns.

Furthermore, all workers will have the opportunity to offer views or concerns at the various site briefings and weekly site meetings.

140 ON SITE COMMUNICATION (RISKS TO HEALTH AND SAFETY)

To ensure all workers and visitors are aware of risks on site at all times we shall:

- Complete site induction with all workers which includes Method Statement and Risk Assessment briefing.
 - Hold regular site safety toolbox talks
 - Provide appropriate warning signs and safety notices
 - Hold regular site meetings with all workers to discuss and review health and safety and to advise any changes to the Demolition Phase H & S Plan, MS or RA
 - Not allow any visitor to be on site unless they are fully aware of the risks on site.
-

15.0 MONITORING ARRANGEMENTS

In order to ensure compliance with Legal requirements and with the Site Rules the following audits will be carried out:

The Site Manager will audit the site on a daily basis. Reporting to the Project Manager

The Project Manager will audit the site on a weekly basis.

Moorgate Consulting will audit the site on a monthly basis.

Any legal breaches, poor working practices, accidents, near misses or complaints will be dealt with immediately by formal investigation. If required the work in progress will be stopped until corrective action is taken, and the Client informed.

Complaints from the Public and accidents or Legal breaches will be immediately reported to the Client.

Findings of the various audits will be discussed on a weekly basis at the Demolition Project Review Meeting.

16/0 FIRE PRECAUTIONS

16.01 Fire precautions will be maintained in accordance with statutory duties with respect to the Regulatory Reform (Fire Safety) Order 2005 and precautions laid down in the L.G. Murphy (Swansea) Limited Fire Procedures.

17.0 FIRST AID ARRANGEMENTS

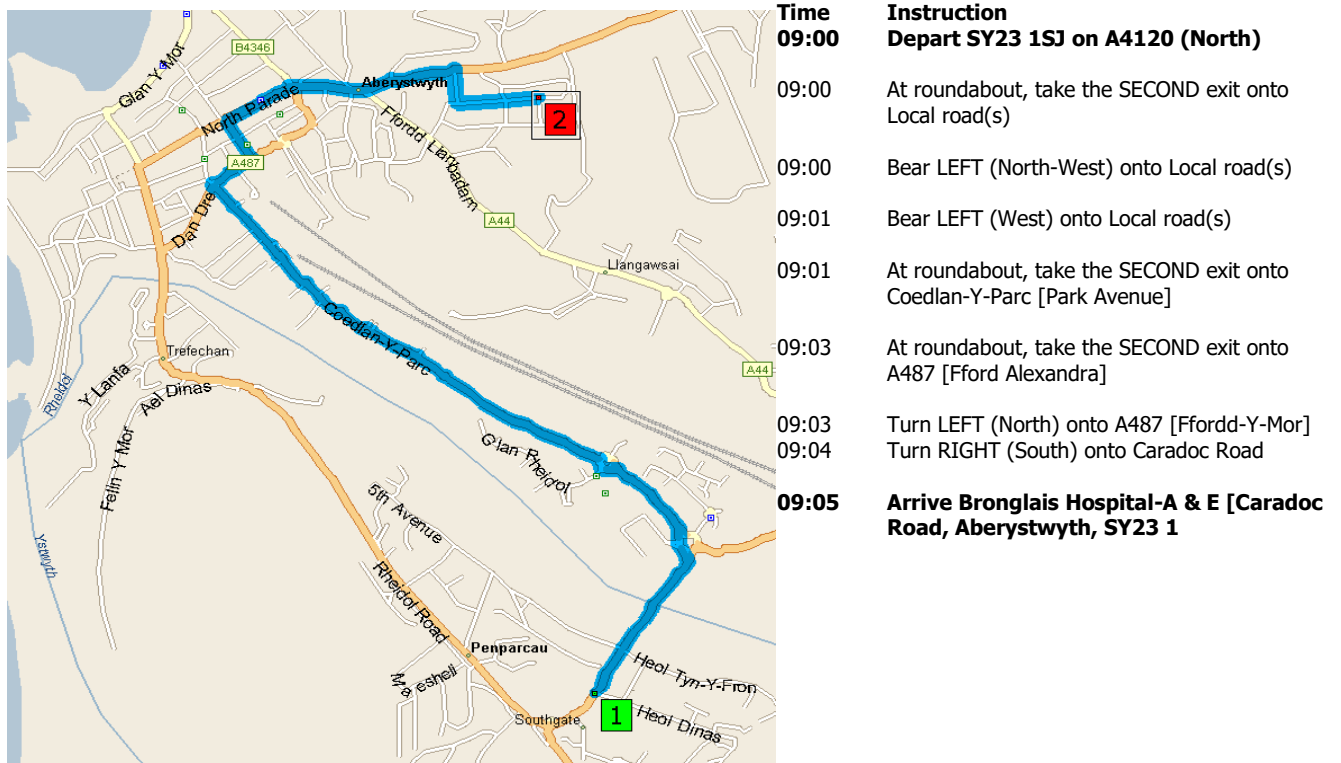
17.01 A first aid kit will be available at all times at site along with an emergency eye wash kit. There will be an appropriately qualified first aider on site for the duration of each working period and details of the nearest emergency hospital will be clearly displayed at the site. An Accident Record book is kept in the site office.

17.02 Nearest hospital with full 24-hour A & E facilities, address and telephone no:

2 Brungle's General Hospital
Emergency Department.
Caradog Road.
Aberystwyth.
SY23 1ER.

Telephone: 01970 62313

ROUTE TO BRONGLAIS GENERAL HOSPITAL



SUMMARY

Driving distance: 3.2 Kms
Trip duration: 5 minutes

18.0 CONTINUING COMMUNICATION AND LIAISON

18.01 The Principal Contractor is aware that good communication between Contractor, Client and other parties is essential in order that the project can run smoothly. Confirmation of any project adjustments will be carried out efficiently between the Client and Principal Designer and all other parties whilst maintaining health and safety standards throughout

18.02 The Principal Contractor will inform them of any change to the design, specification, phasing or other deviation from the original, agreed demolition works that has any health and safety implication. Method Statements and Risk Assessments from contractors will be obtained and passed to the Client and Principal Designer The highway authority will be informed of any changes to the agreed access arrangements and scheme phasing.

19.0 HEALTH AND SAFETY FILE

19.01 The Principal Contractor is aware of his duties under the Construction (Design and Management) Regulations 2015 to assist the Client and Principal Designer with documents relative to the File and making sure that these are passed to him in good time and certainly by the practical completion of the works. The transfer of this information will be by e-mail and surface mail.

L. G. Murphy (Swansea) Limited

CDM REGULATIONS 2015 – STATEMENT OF COMPANY INTENT

PROJECT Former Care Home Bodlondeb Penparcau , Aberystwyth , SY23 1SJ

Description of Works: Remove and dispose of Asbestos material in accordance with the Control of Asbestos Regulations, 2012. Demolish building. Remove, slabs foundations, and tarmac hard-standings. Crush all brick/block/concrete and remove from site Remove all other waste arisings from the site.

L. G. Murphy (Swansea) Limited are aware of its responsibilities and obligations under the Construction Design and Management Regulations 2015 and is committed to developing existing health and safety management arrangements to incorporate the specific requirements for compliance with CDM 2015.

We undertake to develop the Demolition Phase Plan for each project on which we are engaged by assessing specific risks and implementing safe working procedural guidelines for all associated operations.

All necessary resources for each project will be reviewed prior to commencing on site and will be incorporated into the Demolition Phase Plan.

All sub-contractors will be assessed as to their suitability and capability with regard to health and safety arrangements prior to being engaged on any site. Records of these assessments will be kept and periodically updated by the Company.

L. G. Murphy (Swansea) Limited recognises the need for proactive site safety management and undertakes to ensure that the integrity of its operations is not compromised due to neglect or lack of adequate supervision.

We will actively seek communication and liaison with the Principal Designer as necessary in order to develop close working relationships throughout the duration of the project.

All site operations will comply with relevant Legislation, Statutory Instruments and Approved Codes of Practice, and all work methods will be periodically appraised in line with the existing health and safety management system to ensure that the safest possible practices are adopted.

Signed: _____ Date: 06/06/2024
Andrew Murphy, Managing Director
L. G. Murphy (Swansea) Limited

L. G. Murphy (Swansea) Limited

SITE RULES

SITE LOCATION: Former Care Home Bodlondeb Penparcau , Aberystwyth , SY23 1SJ

DO NOT

1. DO ANYTHING THAT MIGHT ENDANGER YOURSELF OR ANYONE ELSE.
2. FAIL TO COMPLY WITH METHOD STATEMENTS AND INSTRUCTIONS
3. WORK ON SITE WITHOUT WEARING A SAFETY HELMET, SAFETY FOOTWEAR and HI-VISIBILITY CLOTHING.
4. FAIL TO OBSERVE THE REQUIREMENTS TO PROTECT YOURSELF FROM DUST AND TO USE THE PPE PROVIDED.
5. WORK AT HEIGHT WITHOUT AUTHORISATION AND PROTECTION.
6. FAIL TO CO-OPERATE WITH OTHER EMPLOYEES AND MANAGEMENT
7. DAMAGE OR MISUSE SAFETY OR WELFARE FACILITIES.
8. DRINK ANY ALCOHOL OR TAKE ANY DRUGS ON SITE.
9. BRING RADIOS ONTO SITE.
10. SMOKE ON SITE.
12. WORK ON SITE WITHOUT ATTENDING THE SITE INDUCTION
13. LIGHT FIRES OR BURN WASTE ON SITE
14. ENTER ADJACENT NEIGHBOURING GROUNDS AND PREMISES.
15. OBSTRUCT ROADS OR PAVEMENTS IN THE AREA
16. CAUSE UNDO NOISE OR DUST NUISANCE TO NEIGHBOURING AREAS
17. USE MOBILE PHONES WHEN OPERATING PLANT

SITE EMERGENCY PLAN

RAISE ALARM AND INFORM: L.G. MURPHY SITE MANAGER AND NEIGHBOURS

MAJOR INJURY NOT INVOLVING SECONDARY THREAT:

FIRST AIDER(S) ATTENDS WITH PARAMEDIC(S) REQUESTED VIA 999 CALL TO THE AMBULANCE SERVICE.

ALL OTHER EMERGENCYS

INFORM NEIGHBOURS.

SHUT DOWN WORK PROCESS, PLANT, CUTTING GEAR, IGNITION SOURCES ETC AND UNLESS OTHERWISE INSTRUCTED PROCEED DIRECTLY TO ASSEMBLY POINT UPWIND OF INCIDENT LOCATION – CONDUCT ROLL CALL AND COMPLY WITH ANY INSTRUCTIONS PROVIDED BY THE EMERGENCY SERVICES.

DO NOT RE-ENTER PREMISES UNTIL INFORMED IT IS SAFE TO DO SO.

EMERGENCY TELEPHONE NUMBERS

LGM PROJECT MANAGER: 07774730276

RYAN PARRY DEVELOPMENT PROJECT MANAGER : 07484 534098

Police/Fire /Ambulance/Maritime Agency & Coastguard: 999

Gas Emergency: Transco: 24 hr No: 0800 111 999

Water Emergency: Welsh Water/Dwr Cymru 24hr No: 0800 052 130

Electricity Emergency: Western Power Distribution 24hr No: 0800 052 0400

Environmental Emergency: Natural Resources Wales: No: 0800 80 70 60.

Nearest Hospital with full 24-hour A&E facilities: Bronglais General Hospital, Emergency Department, Caradog Road, Aberystwyth. SY23 1ER.

Telephon: 01970 62313

SITE LOCATION: Former Care Home, Bodlondeb Penparcau , Aberystwyth , SY23 1SJ

FIRE ACTION

RAISE ALARM. TELEPHONE: 999.

INFORM LGM SITE MANAGER AND NEIGHBOURS

**PROCEED TO THE ASSEMBLY POINT UPWIND OF FIRE LOCATION –
CONDUCT A ROLL CALL.**

DO NOT RE-ENTER BUILDING UNTIL INFORMED IT IS SAFE TO DO SO.

EMERGENCY TELEPHONE NUMBERS

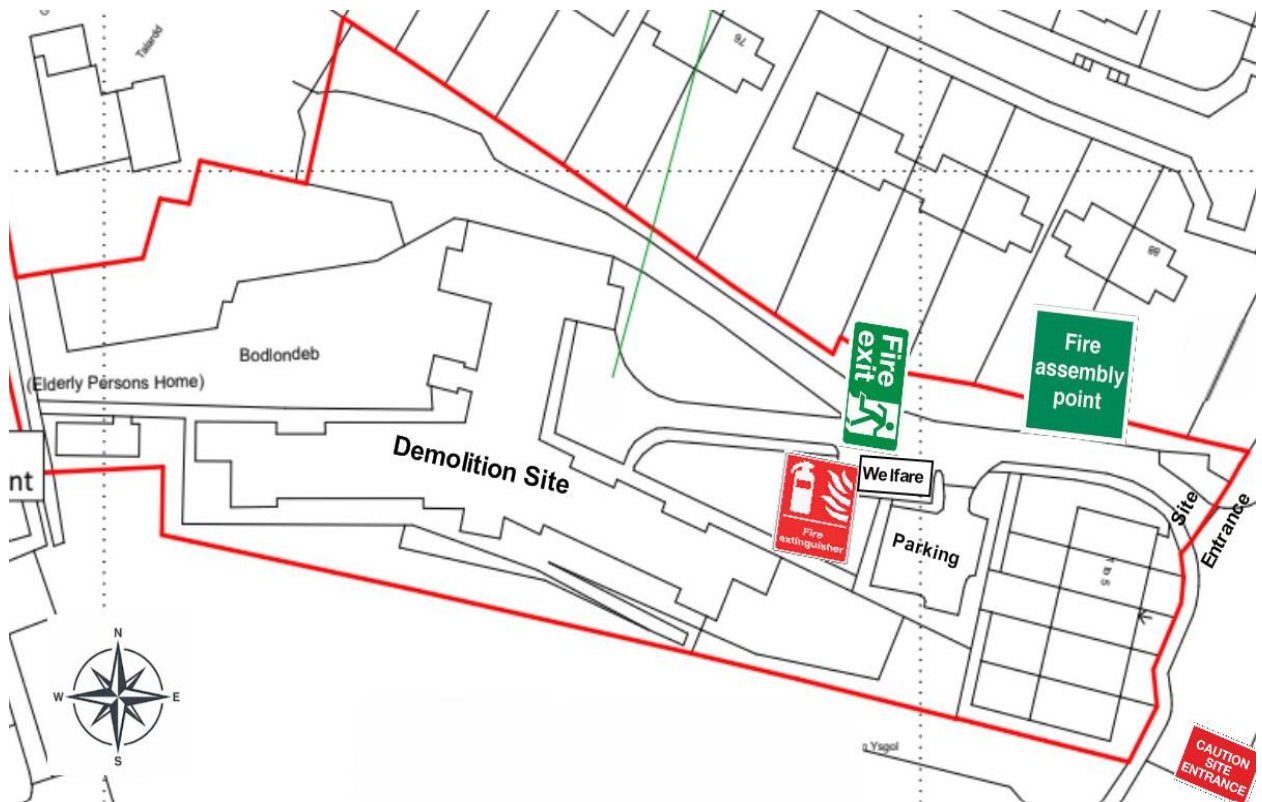
EMERGENCY SERVICES: 999.

LGM PROJECT MANAGER /SITE SUPERVISOR: 07774730276.

RYAN PARRY DEVELOPMENT PROJECT MANAGER : 07484 534098

SITE LOCATION: Former Care Home Bodlondeb Penparcau , Aberystwyth

SITE FIRE PLAN



SITE NOTICE

Displayed on Site Notice Board

SITE MANAGEMENT STRUCTURE

Project Manager: Andrew Murphy

Site Supervisor: Andrew Murphy

First Aider: TBA

Induction & Toolbox Trainer: Andrew Murphy

Site Location: Former Care Home Bodlondeb Penparcau , Aberystwyth , SY23 1SJ

Client: Wales and West Housing, West Office, Cwrt y Llan, Church Lane, Newcastle Emly, SA38 9AB

Contact Telephone Numbers

- | | | |
|----------------------|---|------------------------------------------------------------|
| Andrew Murphy | - | Project/ Manager/ Emergency Contact (07774 730276) |
| Geraint Williams | - | Contracts Manager Emergency Contact (07968 750232) |
| Ryan Parry | - | Development Project Manager (07484 534098) |
| Lee Hickman | - | RDM Emergency Contact (07368 292234) |
| Moorgate Consulting. | - | Safety Consultants Emergency Contact (07964 106382) |

L. G. Murphy (Swansea) Limited

METHOD STATEMENT

Construction (Design and Management) Regulations 2015

For the purpose of this method statement the Client is the organisation L. G. Murphy (Swansea) Ltd are contracted to.

Client: Wales and West Housing
West Office
Cwrt y Llan
Church Lane
Newcastle Emlyn
SA38 9AB

Principal Designer TBA:

Contact Ryan Parry
Mobile 07484 534098 E
Email: : ryan.parry@wwha.co.uk

Contact:
Mobile
E-mail:

Principal Contractor: LG. Murphy (Swansea) Limited
11, Prospect Park
Queensway
Fforesfach Swansea SA5 4ED

Contact: Andrew Murphy
Telephone: 07774730276
E-mail: andrew.lgmurphy@btconnect.com

Site Location: Former Care Home Bodlondeb Penparcau , Aberystwyth , SY23 1SJ

Description of Works: Remove and dispose of Asbestos material in accordance with the Control of Asbestos Regulations, 2012. Demolish building. Remove, slabs foundations, and tarmac hard-standings. Crush all brick/block/concrete and remove from site Remove all other waste arisings from the site.

L. G. Murphy (Swansea) Limited Site Supervision: -

Mr Andrew Murphy –Project/Site Manager – Responsible for overall management of the entire Project.

Geraint Williams- Contracts Manager– Reporting to the Project Manager

Number of employees involved: - Demolition Team:1 Site Manger/Supervisor, 2 Plant operative 3-4 site operatives

Asbestos team: Site Supervisor 4/5 nr Asbestos Site operatives.-(tbc)

Contact telephone numbers/e-mail addresses: -

Andrew Murphy: 07774730276 E-mail: andrew.lgmurphy@btconnect.com

Geraint Williams: 07968 750232 E-mail: geraint.williams@live.com

Ryan Parr Development Project Manager : 07484 534098 E mail : ryan.parry@wwha.co.uk

Lee Hickman RDM Environmental Ltd 07368 292234 E-mail: Lee.H@rdmenv.co.uk

Safety Adviser: Moorgate Consulting: 07964106382. E-mail:consulting@moorgate-london.com

SITE SECURITY

Site secured by hoarding. Gates secured. Plant and vehicles locked out of hours.

SITE ACCESS Narrow access onto site off A4120. Banksman control in place as necessary. Measures agreed with the Client put in place to facilitate safe access whilst 2/3 storey section north elevation is reduced
LGM assumes exclusive access to the demolition sites

DESIGN /SITE HAZARDS

Presence of Asbestos materials- Note! The following areas were excluded from the 'Asbestos Demolition Survey':
Ground floor rooms 038, 038a, 038b and lift /lift shaft.
Access issues with regard to rear care home.

The Wildlife and Countryside Act 1981 (WCA)

European Union Council Directive 92/43/EEC of 21 May 1992 on the Conservation of Natural Habitats and of Wild Fauna and Flora. Conservation of Habitats and Species Regulations (2010).

No bat activity observed during Bat Survey.

Following comments by Ecologist:

Where proposed plans involve works to the roof(s) extra care will be taken at wall tops and when stripping any part of the roof(s). All materials are to be lifted and not slid as – despite a negative survey – bats can still be found in these areas. **If bats are found at any stage, all works will stop, and a qualified ecologist called for advice and guidance.**

Dust Control

The Demolition Contractor is aware of the concerns over dust and noise nuisance and will take all necessary precautions to eliminate impact on neighbours.

Wind direction will be monitored and where necessary demolition work suspended or re-arranged in order to eliminate impact on neighbouring properties. Dust suppression measures using water jitter spray in use throughout demolition including damping down, covering or netting.

Noise Nuisance

All plant is adequately maintained and operated within the manufacturers specified maximum noise level. Daily inspections of all Plant by Operators to be recorded and kept on site.. Monitoring carried out by PC if necessary.

WEATHER CONDITIONS

Monitoring of weather conditions on site carried out by the Site Supervisor continuously including reference to weather reports. Works will shut down when wind speed reaches a threshold of 28 mph with gusts exceeding 35 mph.

SITE ACCES



Suitable access onto site from A4120. Access strictly controlled in accordance with the Site Traffic Management Plan.

METHODS OF EXECUTION

<u>ACCESS</u>	<u>EQUIPMENT</u>	<u>TASK</u>
	<u>ACCESS EQUIPMENT</u>	<u>PLACE TO BE USED</u>
	Podium/Scaffold Tower	Internal

MATERIALS STORAGE

Recovered materials will be temporarily stored on hard standing. They will always be stored so that they do not present a hazard to anyone else in the vicinity. Considerations, which will be applied when using a designated storage area will be: -

- (a) Preventing falls of materials
 - (b) Minimising trips and collisions
 - (c) Blocking safe access and egress routes
 - (d) Flammability of materials to be stored
-

ELECTRICAL

Any electrical equipment used on this project will be of 110v supply or battery operated and PAT tested. Visual checks of the equipment will be undertaken before each use.

PLANT

All plant to be used will be serviced and maintained in accordance with the manufacture's guidance and any statutory instructions. On this project the following plant will be utilised: -

<u>PLANT</u>	<u>USE</u>
1x 24t 360 ° Excavator & attachments	Demolition /waste handling/ processing
1x 30t 360° Excavator & attachments -	Demo / waste handling / processing
20-ton Jaw crusher	Crushing waste brick/concrete
40 yd waste bins	Waste removal
20 t tipper lorries	Brick / concrete removal
Water Bowser	Dust suppression

MATERIALS AND SUBSTANCES

All workers will be given information and/or instruction on the materials and substances to be used or found to be present on this project. This information will be extracted from the safety data sheets and COSHH assessments. This information will be given in the pre-work briefing mentioned below under the heading "Training".

Other than the materials and substances listed below, no other substances will be brought onto site without the client's permission. List of materials and substances to be used: -

<u>MATERIAL/SUBSTANCE</u>	<u>USE</u>
Diesel Fuel	Plant fuel

TRAINING

All workers will only be allowed to undertake work that they have been suitably instructed and trained to carry out. Where statutory training is required this will have been undertaken prior to commencing work. Copies of statutory training certificates are available on request. Supervisors, Managers and operatives hold appropriate current CSCS and CPC cards.

L.G. Murphy are members of the National Demolition Training Group (NDTG) who provide regular training to the Company

Pre-work briefings will take place with all workers prior to commencing work. The briefing will include the following: -

- This document
- Safety Data sheets and COSHH Assessments
- Work Sequences as per work programme.
- Safe Working Arrangements
- Risk Assessments (enclosed)
- Any information supplied by the Client e.g. Site Rules.

PERSONAL PROTECTIVE EQUIPMENT (PPE)

Where PPE is identified as necessary for any part of the work, the PPE will have been assessed for its suitability prior to it being used. All workers will receive instruction at the pre-work briefing on the use, storage and maintenance of any PPE to be used. The wearing of PPE will be enforced using our disciplinary procedure.

The following is a list of PPE conforming to BSi/EN specifications and standards intended for use on this project: -

<u>PPE</u>	<u>USE</u>
Hard Hats	Head protection
Gloves	Hand protection
Hi Visibility vests	Alert other workers
Safety footwear	Foot protection
Ear protection	Hearing protection
Eye Protection	Eye protection
FFP3	Respirable dust /Covid-19 protection
Full body safety Harness with secured safety line	Work at height
Disposable Overalls	Protection from dust.

WELFARE AND FIRST AID

Welfare and Toilet facilities will be provided on that site These all conform to the requirements of the Construction (Design and Management) Regulations 2015 – Regulations 4(2)(b),13(4)(c) and 15(11).

Qualified First aider and A First Aid kit will be available at site along with an emergency eye wash kit.

SYNOPSIS OF SEQUENCE OF WORK

- Asbestos Removal from Golygfa Ward
- Demolition of Golygfa Ward after Asbestos Removal and certified clean to demolish
- During Demolition of Golygfa Ward – Asbestos Removal from Ystwyth Ward
- Demolition of Ystwyth Ward after Asbestos Removal and certified clean for demolition
- During Demolition works to Golygfa and Ystwyth Wards – Asbestos Removal from the 2/3 storey section of Care home including the Boiler house on the lower ground floor .
- Demolition of 2/3 storey section after Asbestos Removal . Access lane to rear Care Home needs to be closed during demolition of this section of building and further discussions needed between Client and L G Murphy prior to Demolition of this section.

Statement by Moorgate Consulting
Asbestos Removal

The three sections of the building are not stand-alone structures isolated from each other but are interconnected with the only isolation being by corridor fire doors and roof fire breaks . It is assumed that the air ventilation ducting, and air conditioning ducting are interconnected throughout the building. When the Golyfga Ward walls and roof are breached wind pressure/vacuum could cause asbestos stripping dust and demolition dust to migrate through the building to adjacent wards via the ventilation ducting and any removed fire breaks. These issues have been taken into account by RDM Environmental Limited and the following precautions taken: -RDM will ensure that a fixed barrier including a suitable buffer zone is in place prior to Demolition of the cleared section. Analyst will carry out Air Sampling to demonstrate that the controls in place are effective

If at any time the sequence of work has to be changed this will not be done without first consulting with the Client. Wales and West Housing, West Office, Cwrt y Llan, Church Lane, Newcastle Emly, SA38 9AB

Visit to site and survey by L.G. Murphy (Swansea) Limited to familiarise themselves with the site including the structural condition/design of the building and to determine safe sequence of work for the preparation of Method Statement and Risk Assessments. Site meeting held with Client to discuss project.

Welfare facilities put in place by the Principal Contractor conforming to the Construction (Design and Management) Regulations 2015 – Regulations 4(2)(b),13(4)(c) and 15(11).

Written confirmation of Electrical/Gas disconnection/isolation to be provided to L.G. Murphy (Swansea) Limited.

Induction Briefings provided to all operatives and sub-contractors personnel to include Method Statements and Risk Assessments, supervision and communications, location of pedestrian designated safe routes, identification of restricted areas, welfare and first aid facilities, site rules, emergency evacuation routes, fire precautions and waste management and environmental arrangements.

Site Induction provided by the Principal Contractor

Stop Work Protocol in place to be enacted if unexpected conditions arise or work is required which is outside the approved existing RAMS. In such cases Rams are to be revised and approved by all parties before work resumes.

1.0 Access to Rear Care Home

1.1 Measures agreed with the Client put in place to facilitate safe access whilst 2/3 storey section north elevation is reduced

2.0 Demolition Site Set-up

2.1 Under control of banksman unload heavy plant from low loader together with waste bins and welfare unit. Set up welfare facilities. Adjust Heras fence line installed by the Client to secure the demolition site.

2.2 Take delivery of Asbestos decontamination unit & 16yrd sealed asbestos waste skip

Set up an area of Asbestos demarcation & respirator / PPE zone

2.4 Proprietary rubber sealing plugs fitted to main sewer connection and rainwater gulleys to prevent debris from demolition works entering the sewer or rain gully systems. Rainwater gulleys and sewer manhole covers protected by industrial heavy duty rubber mats to prevent damage by plant.

3.0 Structural Inspection

A visual structural inspection has been carried out on the buildings by Andrew Murphy and Geraint Williams of LG Murphy (Swansea) Ltd taking into account the structural integrity of the building.

Conclusion: Following the structural inspection the buildings can be demolished safely from top-down maintaining structural stability using suitable sized track excavator with appropriate attachments .

4.0 Asbestos Removal from Golyfga Ward

4.1 Working within exclusion zone RDM operatives strip asbestos materials from the ward in accordance with the Rams provided. After Asbestos Removal from a Section of building -RDM will ensure that a fixed barrier including a suitable buffer zone is in place prior to Demolition of the cleared section. Analyst will carry out some air sampling .

4.2 On completion clearance/completion certificate provided to the Principal Contractor.

4.3 RDM relocate to Ysywyth Ward

5.0 Asbestos Removal from Ysywyth Ward

5.1 Working within exclusion zone RDM operatives strip asbestos materials from the ward in accordance with the Rams provided whilst LG Murphy carry out demolition of Golyfga Ward

5.2 On completion clearance/completion certificate provided to the Principal Contractor.

5.3 RDM relocate to 2/3 storey ward including Boiler room on lower ground floor

6.0 Asbestos Removal from 2/3 storey section including Boiler room on lower ground floor

6.1 Working within exclusion zone RDM operatives strip asbestos materials from the section in accordance with the Rams provided whilst LG Murphy carry out demolition of Ysywyth War.

6.2 On completion clearance/completion certificate provided to the Principal Contractor and RDM demobilise from the site.

7.0 Soft Stripping and Demolition of Golyfga Ward whilst RDM remove Asbestos from Ysywyth Ward

7.1 Set up exclusion zone using hazard tape /barriers and signage around Golyfga Ward under control of banksman

7.2 Operative's carry out limited soft strip by hand from building of some non-load bearing; internal secondary elements, fittings and fixtures which do not provide structural support or that may result in an unsafe structure following removal including minor non-structural items.

7.3 Waste material placed in designated 40yard waste bins.

7.4 On completion operatives evacuate the building and doors secured to prevent entry.

7.5 Using 24/30 ton 360°excavators with selector grab working under Banksman control within exclusion zone, carefully remove roof structure including coverings and timber joists

7.6 Using 24/30 ton 360°excavators with selector grab working under Banksman control within exclusion zone reduce all walls to building (external and internal) to slab level in a controlled and progressive manner ensuring stability throughout. External walls progressively reduced inwards into building footprint **Demolition interrupted by Banksman to allow structural inspection by Andrew Murphy to re assess stability of building before continuing.** Use water suppressant for dust control used throughout.

7.7 Using 360° excavator with grab attachment places waste masonry material in crushing area and separate and place all other waste into designated waste bins for removal from site.

7.8 On completion LG Murphy relocate to Ysywyth Ward

8.0 Soft Stripping and Demolition of Ysywyth Ward whilst RDM remove Asbestos from the 2/3 storey section.

8.1 Set up exclusion zone using hazard tape /barriers and signage around Ysywyth Ward e under control of banksman

8.2 Operative's carry out limited soft strip by hand from building of some non-load bearing; internal secondary elements, fittings and fixtures which do not provide structural support or that may result in an unsafe structure following removal including minor non-structural items.

8.3 Waste material placed in designated 40yard waste bins.

8.4 On completion operatives evacuate the building and doors secured to prevent entry.

8.5 Using 24/30 ton 360° excavators with selector grab working under Banksman control within exclusion zone, carefully remove roof structure including coverings, and timber joists

8.6 Using 24/30 ton 360° excavator with selector grab working under Banksman control within exclusion zone reduce all walls to building (external and internal) to slab level in a controlled and progressive manner ensuring stability throughout. External walls progressively reduced inwards into building footprint **Demolition interrupted by Banksman to allow structural inspection by Andrew Murphy to re assess stability of building before continuing.** Use water suppressant for dust control used throughout.

8.7 Using 360° excavator with grab attachment places waste masonry material in crushing area and separate and place all other waste into designated waste bins for removal from site.

8.8 On completion LG Murphy relocate to 2/3 storey section and Boiler room

9.0 Soft Stripping and Demolition of 2/3 storey Section and Boiler room

9.1 Set up exclusion zone using hazard tape /barriers and signage around 2/3 story ward under control of banksman

9.1.2 Operative's carry out limited soft strip by hand from building of some non-load bearing; internal secondary elements, fittings and fixtures which do not provide structural support or that may result in an unsafe structure following removal including minor non-structural items.

9.1.3 Waste material placed in designated 40yard waste bins.

9.4 On completion operatives evacuate the building and doors secured to prevent entry.

9.5 Using 24/30 ton 360° excavators with selector grab working under Banksman control within exclusion zone, carefully remove roof structure including coverings and timber joists

9.6 Using 24/30 ton 360° excavators with selector grab working under Banksman control within exclusion zone reduce all walls to building (external and internal) to slab level in a controlled and progressive manner ensuring stability throughout. External walls progressively reduced inwards into building footprint. **Demolition interrupted by Banksman to allow structural inspection by Andrew Murphy to re assess stability of building before continuing.** Use water suppressant for dust control used throughout.

9.7 On completion of demolition of Boiler Room place barriers at lower ground floor level change if risk of fall from height exists.

9.7 Using 360° excavator with grab attachment places waste masonry material in crushing area and separate and place all other waste into designated waste bins for removal from site.

10.0 Slab, Footings and armac Hardstanding Removal

10.1 Reset exclusion zone using hazard tape /barriers and signage under control of Banksman.

10.2 Excavation Permit to Work issued by the Principal Contractor and controls put on place.

10.3 Working in exclusion zone under control of Banksman use 24/30-ton 360° excavator with breaker attachment to remove slabs, footings and tarmac hard-standing
Use Dust Control System to suppress dust

10.4 Places waste masonry material crushing area using 360° excavator.

10.5 On completion Excavation Permit to Work returned to the Principal Contractor.

11.0 Crushing Operations

11.1 Using 20-ton jaw crusher with qualified operative working in designated crushing area crush clean concrete/brick arisings to Client's specification. Re-bar removed from concrete using excavator pulveriser attachment. .

11.2 Crushed material loaded into 20-ton tipper lorries for removal from site

Remove all plant, and tools from the site.

Liaise with Client to ensure security of site boundary.

Inspect site with Client's Representative and hand site back to Client.

Signed:Date:06/06/2024
Andrew Murphy, Managing Director

Employee Agreement.

"The contents of this Method Statement and attached Risk Assessments have been explained to my satisfaction and are fully understood. I understand that I must adhere strictly to the sequence of operations and all other instructions above and that in the event of any need to deviate from the methods laid down I must stop until agreement is reached and recorded in writing on any revised method of work."

Sign below:

L.G. Murphy (Swansea) Limited

Construction Design and Management Regulations 2015

Stop Work Protocol

Revision of Method Statement/Risk Assessment

Stop Work Protocol in place to be enacted if unexpected conditions arise or work is required which is outside the approved existing RAMS. In such cases work is to stop and Rams are to be revised and approved by all parties before work resumes as defined below:

In the event changing circumstances require alterations to the defined method of working as laid down in the RAMS Rev.....Dated..... Mr Andrew Murphy will agree any changes with the Client:. Both will sign agreement below with a copy provided to the Client and a copy displayed at the LGM work site.

Changes, which should be referenced to the original document, must be clearly detailed below together with any drawings. A review of the original Risk Assessments must be carried out and if any changes are necessary they must be recorded.

LGM operatives and sub-contractors will be made aware of the changes and will sign below that they have read and understand them.

This form when completed is a legal document and should be properly revision indexed and referenced.

Use continuation sheet

Name	Company	Signature	Date	Comments
Andrew Murphy	LGM			

Declaration by LGM /Sub-contractor Staff

The changes to the original Method Statement and Risk Assessments have been explained to my satisfaction and are fully understood. I am aware that I must adhere strictly to the sequence of operations and all other instructions above and that in the event of any need to deviate from these works must stop until agreement is reached and recorded in writing on any revised method of work."

Name	Company	Signature	Date	Comments

Date:

Revision 0

Emergency Plan

WAH Operations – Harness Suspension

Health Consequences of Suspension

All users of personal fall protection systems and others involved with work at height should be aware of the following precautions that might need to be taken in the event of a casualty being in a suspended position.

- ❖ The longer the casualty is suspended without moving, the greater the chances are of serious consequences developing. Therefore, an injured person hanging in a harness awaiting rescue should be removed from upright suspension as quickly as possible. The aim should be to do this within 5 minutes. This is particularly important for a casualty who is motionless
- ❖ A conscious casualty should be encouraged to exercise their legs gently, to stimulate circulation of blood.
- ❖ Regarding position of the casualty:
 - During rescue, a position with the lower limbs slightly elevated may be preferable.
 - If suspension has occurred alert medical services immediately.
- ❖ Following an accident, the casualty should be:
 - Removed from the suspended position to the nearest point of safety.
 - Assessed by a qualified first aider.
 - Given professional medical assistance as quickly as possible.

Users of personal fall protection equipment should be aware of potential complications which can occur from prolonged suspension. Whilst speed is essential it is vital that the specially trained rescue team wear full body harness and secured fall restraint before commencing any rescue operation.

If someone is suspended in a harness

React Immediately

You only have a short time to rescue them especially if they are unconscious

If it is unlikely that site rescue team will be able to affect a rescue within 5 minutes the Fire & Rescue and Ambulance Services should be called immediately on 999

Training

It is crucial that rescue teams are exercised regularly in the techniques required to quickly perform rescue operations including familiarity with rescue equipment which is available at site.

References:

The Work at Height Regulations 2005

International Powered Access Federation. Guidance on Emergency Rescue.

BS 8454: 2006. Code of practice for the delivery of training and education for work at height and rescue

HSE - General Information

L. G. MURPHY (SWANSEA) LIMITED

C.O.S.H.H. ASSESSMENT

Control of Substances Hazardous to Health Regulations 2002 as amended

SUBSTANCE : Diesel Fuel – Ultra Low Sulphur Derv		I.D.NUMBER:29/05/2024 Former Care Home Bodlondeb Penparcau , Aberystwyth , SY23 1SJ	
DESCRIPTION OF USE: As a gas oil fuel for plant and on-road vehicles.			
LIKELIHOOD	Possible		
SEVERITY	Major		
EXPOSURE	Short Term		
QUALIFIED RISK RATING		High - without Controls in place. Low – with Controls in place.	
PERSONS AT RISK	ROUTES OF ENTRY	HAZARDS	
Operator ✓ Other Employee ✓ Contractor ✓ Visitors ✓ Young Persons Expectant Mother	Inhalation ✓ Ingestion ✓ Absorption ✓ Injection ✓ See Note 2.	Corrosive below Toxic Flammable ✓ Flash Point 60° Highly Flammable Explosive Sensitiser ✓ Note1: May contain Polycrylic aromatic hydrocarbons (PCAs) potential to cause skin cancer (category 3 carcinogen). Note 2: Injection under skin may have serious medical effects	
		Other / Specify-See Note1 Asphyxiant Harmful ✓ Extremely Flammable Irritant ✓	
CHEMICAL OCCUPATIONAL EXPOSURE LIMITS, (If applicable).			
CHEMICAL NAME		STEL	LTEL
Complex mixtures of distillate hydrocarbons mainly paraffinic, naphthenic and aromatic in range C10-C28 with additives. Note. Additives do not contribute any additional hazard.		10mg/m ³ (15-minute ref)	5 mg/m ³
CONTROLS: Transfer of fuel to vehicles pumped by electric pump through hose with trigger nozzle from purpose designed bunded fuel bowser ort TransCube Smoking is not permitted on site. No consumption of food or drink permitted in the workplace. Well-ventilated area. Nitrile gloves, goggles (none venting), boots, disposable overalls with hood worn by operator. Strict hygiene followed including washing facilities Access to area strictly restricted. Training provided to all operatives.			
Does the substance require a DSEAR assessment?		Yes	
Are there any restrictions allocated to this substance?		Yes	
If "YES" please specify: Dispose of as hazardous waste Harmful to the environment. Transport Classification: UN Flammable Liquid. Class 3 (111) Avoid flames. Flash Point 60°C min			
RECOMMENDATIONS / REMEDIAL ACTIONS: Ensure movement onto and off site controlled by banksman. Maintain existing controls. Monitor and review every 12 months Provide spill kit.			

Prepared by: P. Wilson...Date: 29/05/2024

L. G. MURPHY (SWANSEA) LIMITED

MANUAL HANDLING RISK ASSESSMENT

MANUAL HANDLING OPERATIONS REGULATIONS, 1992, as amended 2002

SECTION 1	
Description: Operatives carry out limited soft strip by hand removing from building non-load bearing; internal secondary elements, fittings and fixtures which do not provide structural support or that may result in an unsafe structure following removal including minor non-structural items.	
Reference: MH29052024	Date: 29 th May 2024
Assessor: P. Wilson.	
Location: Former Care Home Bodlondeb Penparcau , Aberystwyth , SY23 1SJ	
Number involved in the task: 6	Level of experience: High

Overall assessment of the risk of injury: Low with controls in place including supervision.

SECTION 2
<p>Remedial Actions:</p> <p>Manual handling assessed on an individual basis with a maximum limit of 25kg. Limited to short term occasional lifts by trained experienced operatives. Mechanical aids utilised wherever practicable including 24/30 ton 360°Excavators. Wearing of PPE provided enforced under Site Rules. Risk Assessments, Method Statements and Training provided. Direct supervision by experienced Management in place throughout.</p>

L. G. MURPHY (SWANSEA) LIMITED
MANUAL HANDLING RISK ASSESSMENT
MANUAL HANDLING OPERATIONS REGULATIONS, 1992, as amended 2002

SECTION 3					
Considerations	If yes, tick appropriate level of risk			Risks arising from the task	Remedial action
	Low	Med	High		
The tasks - do they involve?					
Holding loads away from the trunk					
Twisting					
Stooping		√		Strain when lifting material	Training and correct lifting techniques employed
Reaching upwards		√		Strain when lifting material	Training and correct lifting techniques employed
Large vertical movement					
Long carrying distances					
Strenuous pushing / pulling					
Repetitive handling					
Insufficient rest or recovery					
Work rate imposed by a process					
The loads - are they?					
Heavy		√		Strain when moving material	24/30-ton Excavators utilised
Bulky / Unwieldy		√		Strain when moving material	24/30-ton Excavators utilised
Difficult to grasp					
Unstable / Unpredictable					
Intrinsically harmful(e.g. sharp / hot)			√	Cuts from handling material	Appropriate PPE provided.
The working environment - are there?					
Constraints on posture					
Poor floors					
Variations in floor levels					
Hot/cold/humid conditions					
Strong air movements					
Poor lighting conditions					
Individual capability - does the job?					
Require unusual capability					
Hazard those with a health problem			√	Harm to individual	Only employees in good health employed on this task.
Hazard those who are pregnant			√	Harm to mother/child	Pregnant employees not employed on this task.
Call for special information / training			√	Harm to individual	Demolition RA and Method Statement. Demolition Phase H & S Plan and MH training. Induction training.
Other factors					
Is movement or posture hindered by clothing or personal protective equipment?	YES		NO √		

L.G. Murphy (Swansea) Limited

Demolition Phase Traffic Management Plan

Site Location: Former Care Home Bodlondeb Penparcau , Aberystwyth , SY23 1SJ

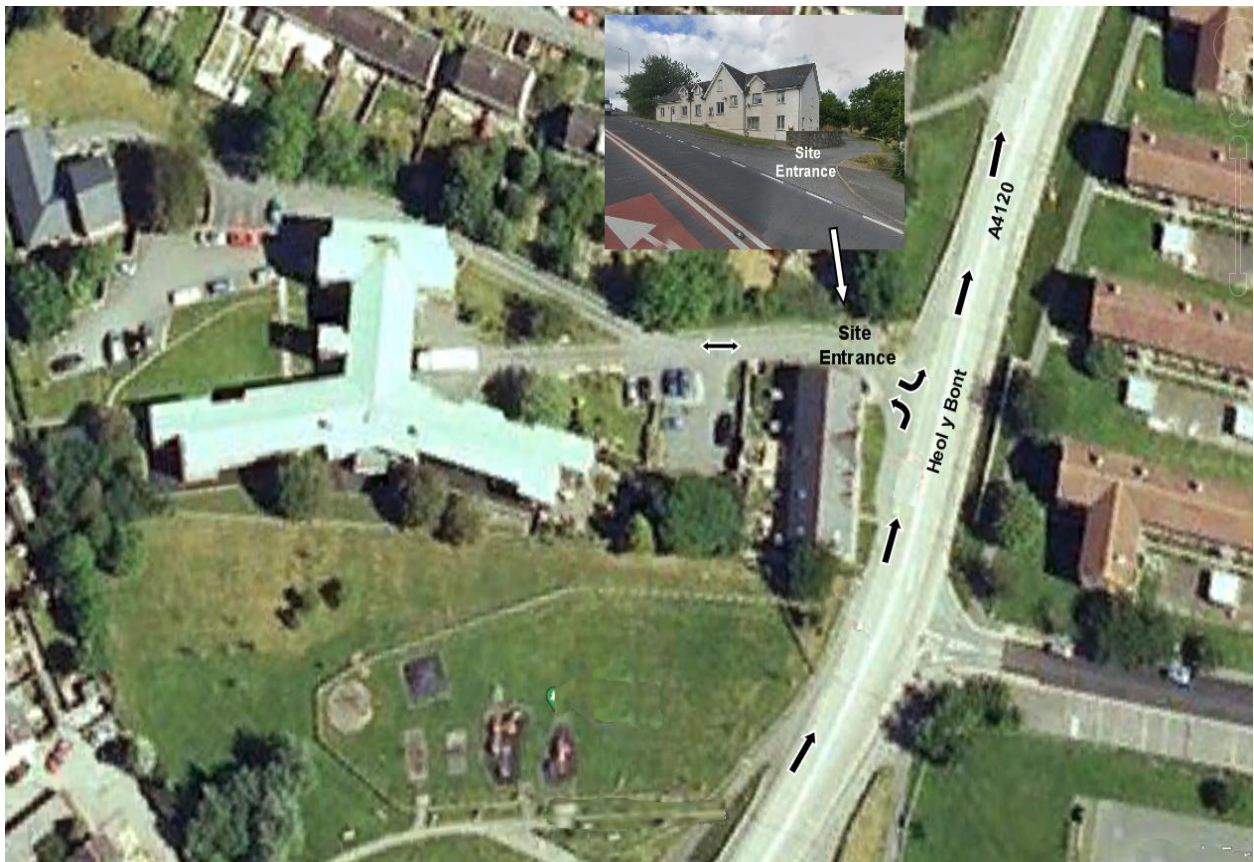
Principal Contractor. L. G. Murphy (Swansea) Limited, Unit 11, Prospect Park, Queensway, Fforestfach, Swansea, SA5 4ED

Client : Wales and West Housing, West Office, Cwrt y Llan, Church Lane, Newcastle Emly, SA38 9AB

1. Introduction

During the demolition phase materials, equipment and personnel will require movement to and from the site. This Demolition Phase Traffic Management Plan describes how these movements will be managed to ensure the safety of the public and other road users in the area together with the safety of the workforce
The demolition phase is anticipated to last: TBA

Transport Rout to and from the Site



2. Transport Arrivals and Departures

The A4120 has an overtaking lane for traffic travelling south with a double white lane preventing transport turning right at the Sirte entrance for the same reason traffic leaving the site are prevented from turning right onto the A4120

Arrival transport will turn Left of Heol y Bont A4120 onto the site . Vehicles will depart the site gates turning left onto Heol y Bont A4120. A swept path analysis shows that HGVs will be able access the site using this route.

3. Site Access

Sufficient room will be made available on site to accommodate the turning and reversing of HGVs. Banksmen will be employed to ensure that all large vehicles are able to manoeuvre safely on site and to allow safe arrival and departure of vehicles.

Extreme care will be exercised when plant is entering and exiting the site.

Movements to take place between 09:30 and 15:00 only.

4. Transport Management

The Site Manager will be responsible for ensuring transport movements within and to and from the site are managed effectively, reducing traffic volumes and unnecessary disruption to the existing highway network. The site Manager will be the single point contact for all drivers approaching the site.

EMERGENCY CONTACT TELEPHONE NUMBERS:

LGM SITE/PROJECT MANAGER: 07774730276

5 Off Site Traffic Management and Signage

Construction Site Entrance warning signs conforming to Chapter 8 and the Traffic signs will be provided a by the Principal Contractor at the site. These will be maintained on approaches to the site. See Plan

All signing placed on the highway will be safely maintained and erected in accordance with the requirements of Safety at Street Works and Road Works a Code of Practice.

6 On Site Traffic Management and Signage

Vehicles will use hazard lights when operating on site and reversing sounders.

Hazard vests are mandatory by all personnel on site including visitors, A 10 mph speed limit applies on site

Banksmen will be utilised to control vehicle movements on site especially when vehicles are manoeuvring.

7. Deliveries and Removals

Description	Vehicle Type	Number
Heavy Plant	Low Loader	1x2 visits
Concrete/brick	20-ton Tipper lorries	110 (2200 tonnes)
Mixed Waste	40-yard Waste bin Trucks	20 40 yard (120tons)
Plant refuelling	Pick-up truck and Bowser/TransCube	Fuel delivery every 4 days

8 conclusions

It is considered that the proposed traffic routes and access to the demolition site are capable of accommodating the traffic requirements of the demolition phase without a significant impact on the surrounding community

Dated: 29/05/2024

Revision 0

L. G. Murphy (Swansea) Limited

Risk Assessment – Construction Design and Management Regulations 2015

Project Location: Former Care Home Bodlondeb Penparcau , Aberystwyth , SY23 1SJ

Project Remove and dispose of Asbestos material in accordance with the Control of Asbestos Regulations, 2012. Demolish building. Remove, slabs foundations, and tarmac hard-standings. Crush all brick/block/concrete and remove from site Remove all other waste arisings from the site.

Client: Wales and West Housing, West Office, Cwrt y Llan, Church Lane, Newcastle Emly, SA38 9AB

No	Hazards	Risks Arising	Persons at Risk	Level of Risk with Existing Controls			Frequency	Additional Control Measures	Risk Assessment With Controls		
				L	S	R			L	S	R
1	Hazardous Substances- Covid -19	Fatality/ ill health due to exposure to Covid-19 virus	LGM Staff and their families Others	5	5	25	High	The Welsh Government announced on 30 May 2022 that all coronavirus rules have come to an end. Hot water hand washing facilities, and hand sanitizer made available. , Face coverings/face masks, overalls and eye protection available as required.	2	5	10
2	Hazardous Substances- Covid -19	Fatality/ ill health due to exposure to Covid-19 virus	LGM Staff and their families Others	5	5	25	High	Employees who are at high risk due to under lying health symptoms required to self-isolate and not attend site. An employee or a family member sharing the same house who displays a dry cough and high fever is required to self-isolate and the employee not attend site. Telephone 111 for advice. Inform Andrew Murphy immediately.	2	5	10
3	Employees	Fatality/ ill health due to exposure to hazards	LGM Staff	4	5	20	High	Personnel must have suitable H&S training including holding current CSCS cards. Site induction/site familiarisation carried out by Principal Contractor before starting work. Competence and training records to be verified before starting work Personnel that they have read and understand RAMS- Stop Work Protocol in place to be enacted if unexpected conditions arise or work is required which is outside the approved existing RAMS. In such cases Rams are to be revised and approved by all parties before work resumes.	2	5	10
4	Hazardous Substances	Fatality/ ill health due to exposure to hazardous substances.	LGM Staff	4	5	20	Low	Compliance with COSHH Regulations- Information and MSDS provided, and assessments carried out where necessary. Welfare facilities provided including washing facilities. Good personal hygiene practices adopted, and PPE used. Certificated Training provided. Possible existence of needles on site- precautions taken.	2	5	10

LIKELIHOOD (L) 5=Very Likely 4=Likely 3=Possible 2=Unlikely But Conceivable 1=Highly Unlikely	SEVERITY (S) 5=Fatal 4=Major Injury 3= Injury, Illness, Serious Damage 2=Minor Injury/Damage 1=Delay/ Prosecution	Risk Level=L x S Note Risk Controls Managed/Monitored by Andrew Murphy	RISK 13-25 Unacceptable Significant Risk. Eliminate Activity.
			8-12 Acceptable Risk. Manage Risk and Monitor.
3-7 Low Risk. Manage Risk and Monitor.			
1-2 Negligible Risk. Monitor.			

L. G. Murphy (Swansea) Limited

Risk Assessment – Construction Design and Management Regulations 2015

Project Location: Former Care Home Bodlondeb Penparcau , Aberystwyth , SY23 1SJ

Project: Remove and dispose of Asbestos material in accordance with the Control of Asbestos Regulations, 2012. Demolish building. Remove, slabs foundations, and tarmac hard-standings. Crush all brick/block/concrete and remove from site Remove all other waste arisings from the site.

Client: Wales and West Housing, West Office, Cwrt y Llan, Church Lane, Newcastle Emly, SA38 9AB

No	Hazards	Risks Arising	Persons at Risk	Level of Risk with Existing Controls			Frequency	Additional Control Measures	Risk Assessment With Controls		
				L	S	R			L	S	R
5	Hazardous Substances/ Asbestos	Fatality/ ill health due to inhalation of asbestos fibres.	LGM Staff Clients Staff Public	5	5	25	Low	Asbestos removal and disposal carried out in phases by RDM Environmental Limited in tandem with demolition by LG. Murphy. Completion/Clearance certificate provided to LG Murphy prior as works progress LGM operatives and Supervisors are trained and certificated in Asbestos Awareness training to recognise asbestos material and to take action if any suspicious material is encountered including Stop Work withdrawal from the area and reporting to Management. Water spray used to suppress dust evolution throughout.	2	5	10
6	Demolition. Stability during demolition.	Injury/ fatality due to unintended collapse.	LGM Staff	4	5	20	High	Construction design reviewed and structural inspections carried out before and during demolition. Progressive and controlled demolition carried out according to the principles laid down in British Standard BS6187-2011 Code of Practice for Full and Partial Demolition Trained well supervised operatives. Experienced qualified Demolition Contractor and Management.	2	5	10
7	Work at height	Injury/fatality to due to falls.	LGM Staff	5	5	25	Med	No access onto roofs permitted. Podium/Scaffold tower utilised during limited soft stripping	2	5	10
8	Contact with services	Injury/fatality	LGM Staff	5	5	25	Low	Written confirmation of services disconnection provided to LGM.	2	5	10
9	Weight of materials	Injury whilst soft stripping	LGM Staff	4	4	16	Low	Certificated Training provided. MH Risk Assessment carried out. Excavators utilised	2	4	8
10	Unauthorised access to area	Injury/fatality	Public	4	5	20	High	Site secured by walls and gates. Warning signage in place. Plant/vehicles locked, and keys removed out of hours. LGM assumes exclusive access to the demolition sites	2	5	10
11	Fire	Injury/fatality fire/explosion.	LGM Staff Visitors	4	5	20	High	No smoking permitted. Fire precautions and Fire Emergency Action Plans in place.	2	5	10

L. G. Murphy (Swansea) Limited

Risk Assessment – Construction Design and Management Regulations 2015

Project Location: Former Care Home Bodlondeb Penparcau , Aberystwyth , SY23 1SJ

Project: Remove and dispose of Asbestos material in accordance with the Control of Asbestos Regulations, 2012. Demolish building. Remove, slabs foundations, and tarmac hard-standings. Crush all brick/block/concrete and remove from site Remove all other waste arisings from the site.

Client: Wales and West Housing, West Office, Cwrt y Llan, Church Lane, Newcastle Emly, SA38 9AB

No	Hazards	Risks Arising	Persons at Risk	Level of Risk with Existing Controls			Frequency	Additional Control Measures	Risk Assessment With Controls		
				L	S	R			L	S	R
13	Contact with site transport/ plant	Injury/fatality	LGM staff Public Visitors	4	5	20	High	Pedestrian safe routes demarcated. Traffic Management system controlled by Banksmen. High visibility vest worn by operatives/visitors under strict site rules. Qualified experienced plant operatives and transport drivers. Hazard lights in use throughout.	2	5	10
14	Operation of Plant	Injury/fatality due to ground collapse.	LGM Staff	4	5	20	High	Ground conditions inspected by Andrew Murphy and found to be suitable for heavy plant.	2	5	110
15	Ait borne harmful substances	Injury/fatality due to inhalation of harmful substances	LGM Staff	5	5	25	Med	Raspatory Protection. Must be selected for the task to be performed and must conform to BSi/EN specifications and standards. Worn under strict site rules. Assessed before us to ensure fit for purpose. Maintained, stored & used correctly Instructions on correct safe use provided to user.	2	5	10
16	Contact with harmful substances	Skin contact with harmful substances	LGM Staff	5	3	15	High	Overalls. Full coverage and correct size and fit must be selected for the task to be performed and must conform to BSi/EN specifications and standards. Worn under strict site rules. Assessed before us to ensure fit for purpose. Maintained, stored & used correctly Instructions on correct safe use provided to user.	2	3	6
17	Foot injury from sharp or falling objects	Crushing, impact and puncturing injuries to feet and slipping.	LGM Staff	4	4	16	High	Sifert Boots. Must be selected for the task to be performed and must conform to BSi/EN specifications and standards. Worn under strict site rules. Assessed before us to ensure fit for purpose. Maintained, stored & used correctly Instructions on correct safe use provided to user.	2	4	8
18	Head contact with obstructions/falling material	Injuries to head from falling/flying objects and from bumping head	LGM Staff	5	5	25	Med	Safety Helmet.. Must be selected for the task to be performed and must conform to BSi/EN specifications and standards. Worn under strict site rules when there is overhead working or if working in restricted head space or confined spaces Assessed before us to ensure fit for purpose. Maintained, stored & used correctly Instructions on correct safe use provided to user.	2	5	10
19	Hand contact with sharp materials	Injuries to h hands from sharp objects	LGM Staff	5	5	25	High	Gloves. Must be selected for the task to be performed and must conform to BSi/EN specifications and standards. Worn under strict site rules Assessed before us to ensure fit for purpose. Maintained, stored & used correctly. Instructions on correct safe use provided to user.	2	5	10
20	Eye impact	Injuries to eyes from sharp or irritant materials	LGM Staff	5	5	25	High	Eye Protection. Must be selected for the task to be performed and must conform to BSi/EN specifications and standards. Worn under strict site rules. Assessed before us to ensure fit for purpose. Maintained, stored & used correctly. Instructions on correct safe use provided to user.	2	5	10

L. G. Murphy (Swansea) Limited

Risk Assessment – Construction Design and Management Regulations 2015

Project Location: Former Care Home Bodlondeb Penparcau , Aberystwyth , SY23 1SJ

Project: Remove and dispose of Asbestos material in accordance with the Control of Asbestos Regulations, 2012. Demolish building. Remove, slabs foundations, and tarmac hard-standings. Crush all brick/block/concrete and remove from site Remove all other waste arisings from the site.

Client: Wales and West Housing, West Office, Cwrt y Llan, Church Lane, Newcastle Emly, SA38 9AB

No	Hazards	Risks Arising	Persons at Risk	Level of Risk with Existing Controls			Frequency	Additional Control Measures	Risk Assessment With Controls		
				L	S	R			L	S	R
21	Impact on neighbours	Nuisance due to Noise /Dust/Transport	Neighbours	3	5	15	High	Dust controls in place. Noise limitation fitted to plant. Traffic management system controlled by Banksmen. Qualified experienced plant operatives and transport drivers. Hazard lights in use throughout. No parking on roads or obstruction of access roads	1	5	5
22	Waste Management	Harm to the Environment.	LGM Staff Public	3	3	9	High	Concrete/brick and Mixed Waste removal from site for recycling/disposal in accordance with Waste Duty of Care in Section 34 of the Environmental Protection Act 1990, the Environmental Protection (Duty of Care) Regulations 1991	1	3	3
23	Environmental damage	Harm to environment due to demolition works	LGM Staff Public	4	3	12	High	Drains/manhole covers protected Sewer Connection sealed where required. Oil spill kit available.	2	3	6
24	Leptospirosis (Wails Disease).	Fatality/III health due to contact with rat urine.	LGM Staff	4	5	20	High	Welfare facilities include washing arrangements. Good hygiene standards maintained. Training provided.	2	5	10

Signed:.....Date: 6th June 2024
Andrew Murphy Manging Director

Employee Agreement.

"The contents of these Risk Assessments and attached Method Statement have been explained to my satisfaction and are fully understood. I understand that I must adhere strictly to the sequence of operations and all other instructions above and that in the event of any need to deviate from these works must stop until agreement is reached and recorded in writing on any revised method of work.

Sign below