



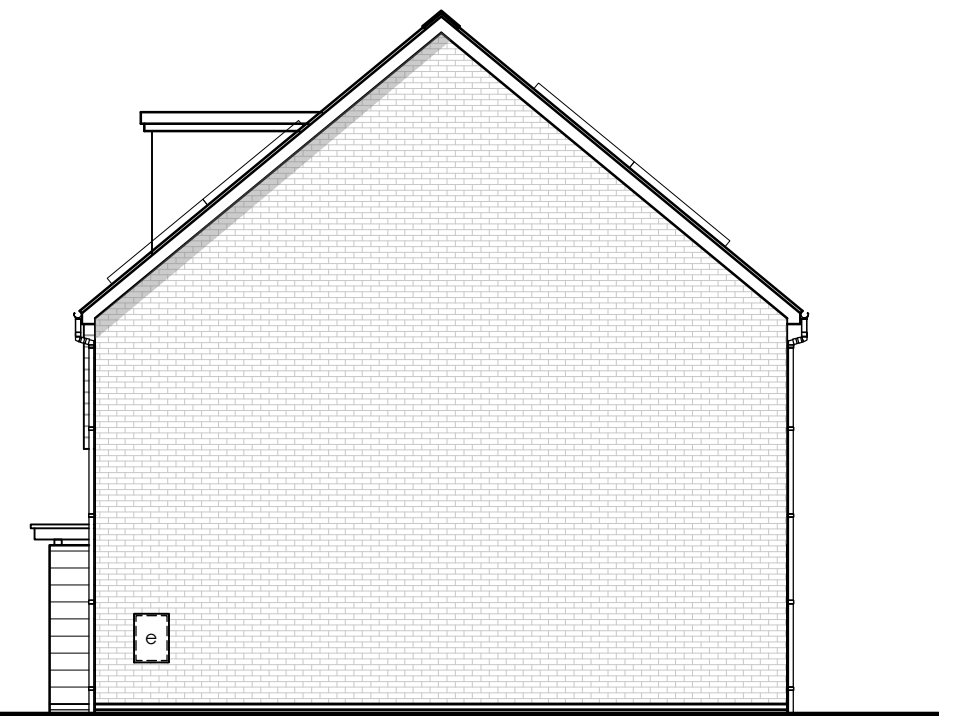
FRONT ELEVATION

MATERIAL FINISHES SCHEDULE :

- ① Concrete roof tiles
- ② Photovoltaic panels 1640 x 992 (indicative)
- ③ uPVC fascias and soffits, colour to match windows
- ④ Black rain water pipes and gutters
- ⑤ Facing brick
- ⑥ Grey uPVC window
- ⑦ Reconstituted stone sills (Front Elevation only)
- ⑧ Cast stone facing masonry
- ⑨ Fibre cement timber effect cladding (Hardie VL, Marley Cedral or similar)
- ⑩ Blue engineering brick



REAR ELEVATION



SIDE ELEVATION

**A3**  
Original sheet size

Rev	Date	By	Description
A	29.05.24	JD	Material Finishes Schedule revised.

Note: This Drawing is copyright, its use or reproduction is subject to permission from Spring Design Consultancy Limited. All rights are reserved until invoices are paid in full. Contact SDC regarding terms & conditions. Check printed scale, responsibility is not accepted for reproduction of digital media or measuring from this document. Only figured dimensions to be used for construction. No responsibility will be taken for any design used for construction prior to receipt of relevant approvals. Report doubts/discrepancies to project Architect.

Client:	Project:	Drawing Title:							
Wates Residential Limited	Willowbrook South	FOG & HT K Elevations							
Drawing Status:	Date:	Drawn By:	Checked:	Director:	Scale:	Job No:	Drawing No.:	Rev.:	Unit 2 Chapel Barns   Merthyr Mawr   Bridgend   CF32 0LS
CONCEPT DESIGN	27.03.24	BG	JM	JM	1:100 @ A3	2485	FOG (02)300	A	t: 01656 656267 e: mail@spring-consultancy.co.uk