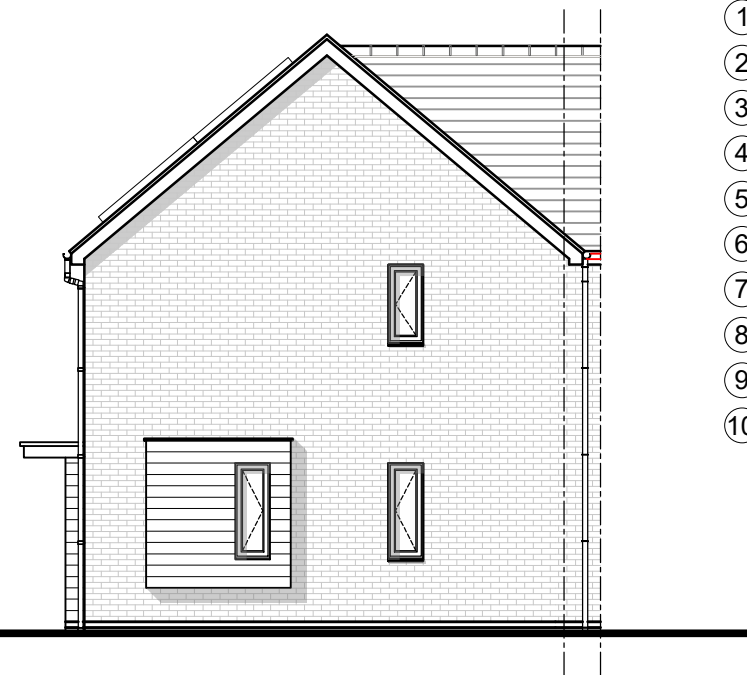


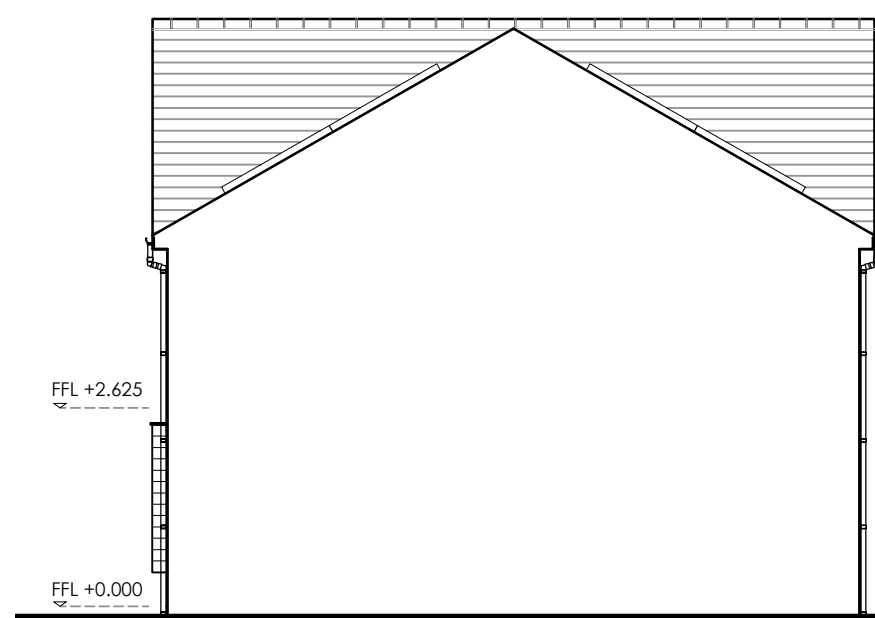


FRONT ELEVATION



SIDE ELEVATION

- MATERIAL FINISHES SCHEDULE :
- ① Concrete roof tiles
  - ② Photovoltaic panels 1640 x 992 (indicative)
  - ③ uPVC fascias and soffits, colour to match windows
  - ④ Black rain water pipes and gutters
  - ⑤ Facing brick
  - ⑥ Grey uPVC window
  - ⑦ Reconstituted stone sills (Front Elevation only)
  - ⑧ Cast stone facing masonry
  - ⑨ Fibre cement timber effect cladding (Hardie VL, Marley Cedral or similar)
  - ⑩ Blue engineering brick



REAR ELEVATION



GARDEN ELEVATION

A3

Original sheet size

Rev	Date	By	Description
A	29.05.24	JD	Material Finishes Schedule revised.

Note: This drawing is copyright. Its use or reproduction is subject to permission from Spring Design Consultancy Limited. All rights are reserved until invoices are paid in full. Contact SDG regarding terms & conditions. Check printed scale, responsibility is not accepted for reproduction of digital media or measuring from this document. Only figured dimensions to be used for construction. No responsibility will be taken for any design used for construction prior to receipt of relevant approvals. Report doubts/discrepancies to project Architect.

Client:	Wates Residential Limited	Project:	Willowbrook South	Drawing Title:	HT D Elevations (AS)
Drawing Status:	CONCEPT DESIGN	Date:	27.03.24	Drawn By:	BG
Checked:	JM	Director:	JM	Scale:	1:100 @ A3
Job No:	2485	Drawing No:	HTD (02)300	Rev:	A
Unit 2, Chapel Barns   Merthyr Mawr   Bridgend   CF32 0LS			t: 01656 656267 e: mail@spring-consultancy.co.uk		

