

## AREA SCHEDULE

**WDQR 2021 Area Requirements**  
 2 Person 1 Bed Walk-up: 53.0m<sup>2</sup>

GF Flat	52.4m <sup>2</sup>
FF Flat	58.4m <sup>2</sup>
<b>Averaged GIA:</b>	<b>55.4m<sup>2</sup></b>

**WDQR 2021 General Storage Requirements**  
 2 Person 1 Bed Walk-Up: 1.5m<sup>2</sup>

**GF**

Airing Cupboard (AC)	0.9m <sup>2</sup>
Store	1.3m <sup>2</sup>
<b>Total:</b>	<b>2.2m<sup>2</sup></b>

**FF**

Airing Cupboard (AC)	0.8m <sup>2</sup>
Store	0.7m <sup>2</sup>
<b>Total:</b>	<b>1.5m<sup>2</sup></b>

Note: Information presented indicatively for coordination with all - including manufacturer & model specification - TBC by relevant specialist consultant / subcontractor. All revisions to the plant specification must be reported for coordination.

## MEP & PLANT PROVISIONS

Information presented indicatively for coordination with all - including manufacturer & model specification - TBC by relevant specialist consultant / subcontractor. All revisions to the plant specification must be reported for coordination.

## CONSTRUCTIONS

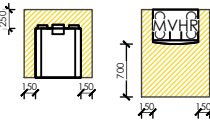
External walls	500mm
Internal walls	100mm
Intermediate floors	400mm

Constructional thicknesses are indicative only & must be coordinated with fabric requirements for acoustic, fire & thermal performances on a site-by-site basis. All TBC by the constructional preferences of the appointed contractor.

## MVHR

Ubiflux Vigor W225  
 dimensions: 650x600x455mm (hwd)

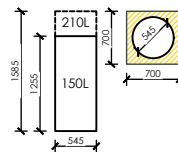
Volume flow: 40-225m<sup>3</sup>/h  
 Heat recovery: 85.0% at 225m<sup>3</sup>/h  
 89.0% at 125m<sup>3</sup>/h



## Hot Water Cylinder

Mixergy cylinder 150 / 210L  
 dimensions: 1255 / 1585x545mm (hd)

Mixergy 150L for HT 211 & HT 212  
 Mixergy 210L for HT 421, HT 531 & HT 641



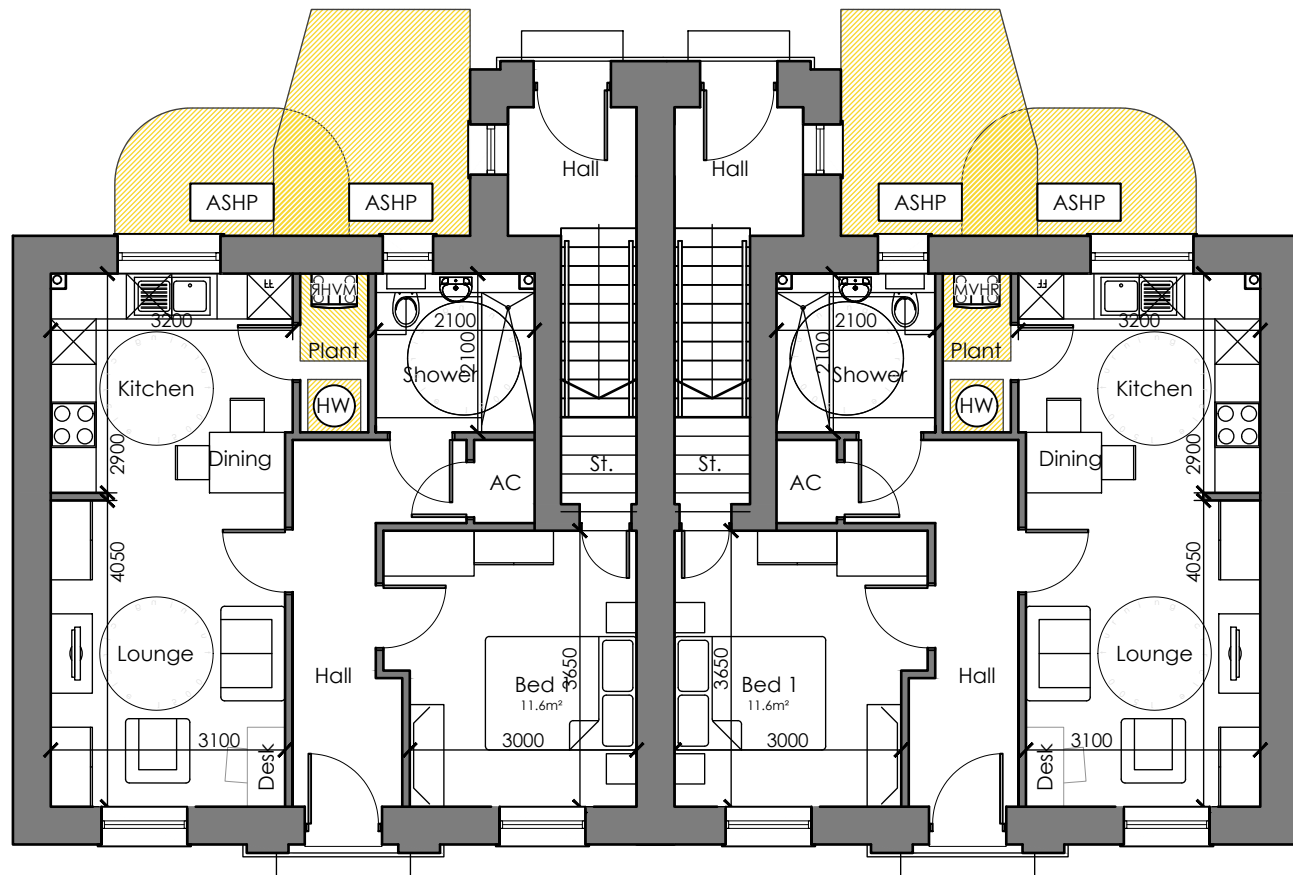
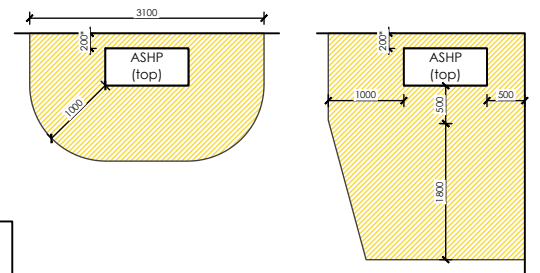
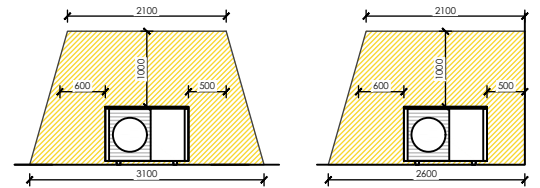
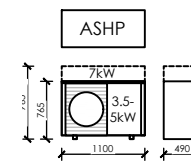
## LOW CARBON PLANT

Dimensions denote minimum installation & maintenance clearances, extrapolated to hatched areas. All as defined by manufacturer's requirements, refer to product literature for specifics.

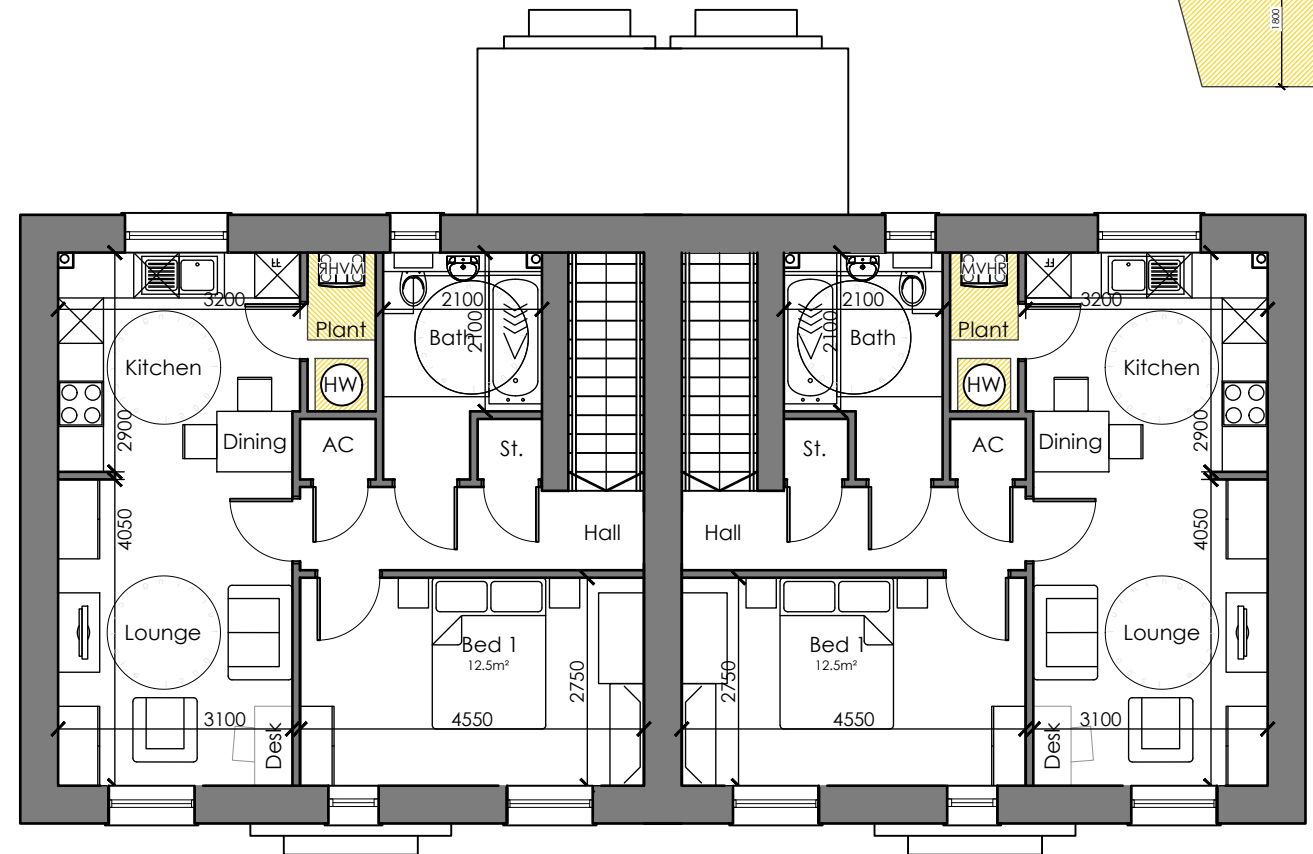
## ASHP

Vaillant aroTHERM plus 3.5 / 5 / 7kW  
 dimensions: 765 / 965x1100x490mm (hwd)

Vaillant aroTHERM plus 3.5kW: HT 211  
 Vaillant aroTHERM plus 5kW: HT 421 & HT 531  
 Vaillant aroTHERM plus 7kW: HT 641



GROUND FLOOR PLAN



FIRST FLOOR PLAN

A3

Original sheet size

Note: This Drawing is copyright. Its use or reproduction is subject to permission from Spring Design Consultancy Limited. All rights are reserved until invoices are paid in full. Contact SDc regarding terms & conditions. Check printed scale, responsibility is not accepted for reproduction of digital media or measuring from this document. Only figured dimensions to be used for construction. No responsibility will be taken for any design used for construction prior to receipt of relevant approvals. Report doubts/discrepancies to project Architect.

Rev	Date	By	CHK	Description

Client: Tai Tarian	Project: Tudor Inn Cimla	Drawing Title: HT 211 Floor Plans	
Drawing Status: PLANNING SUBMISSION	Date: Feb 24	Drawn By: cc	
Job No: 2617	Drawing No: 211(03)200	Rev: -	Unit 2 Chapel Barns   Merthyr Mawr   Bridgend   CF32 0LS t: 01656 656267 e: mail@spring-consultancy.co.uk