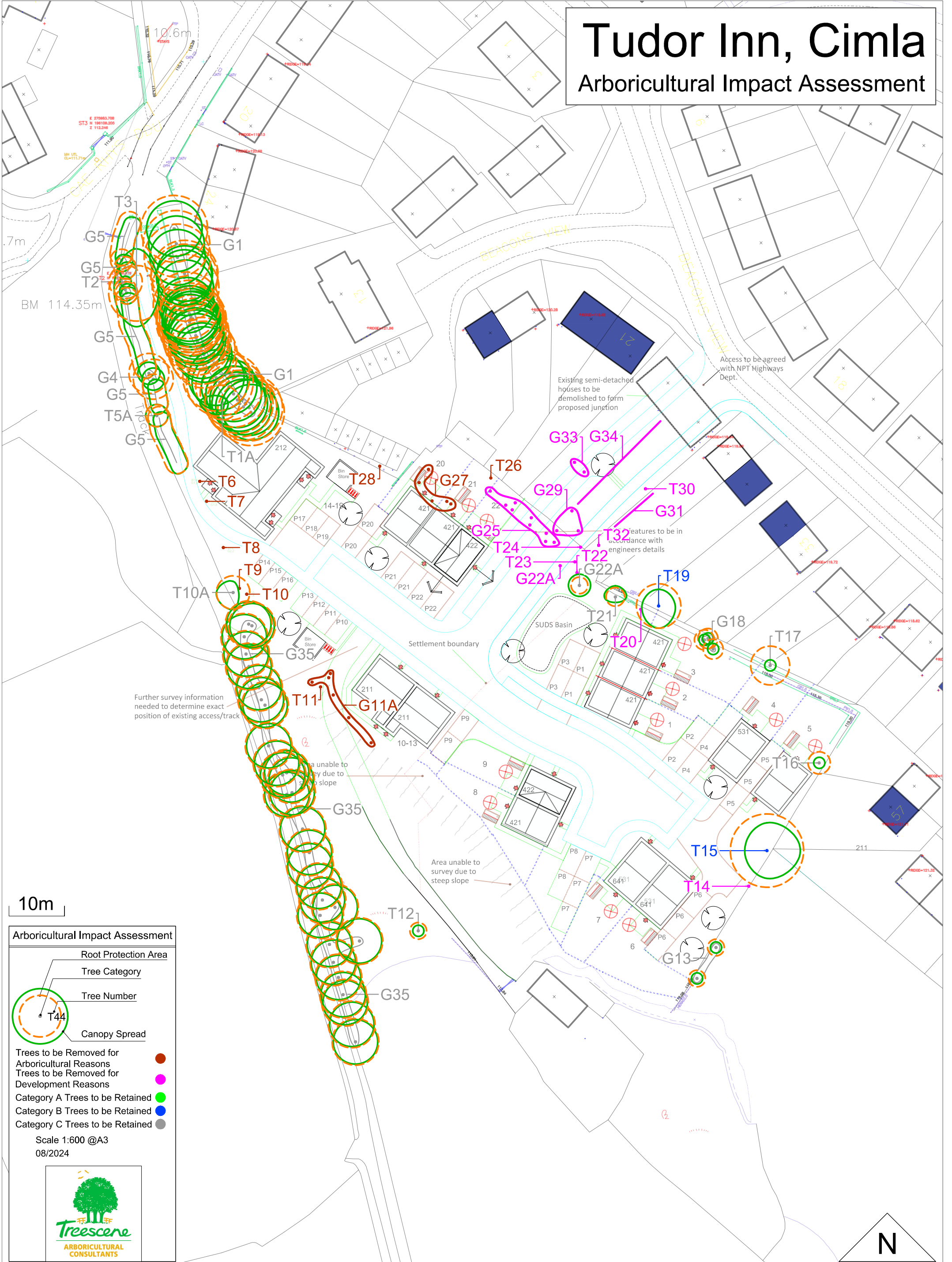


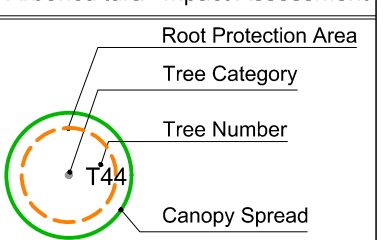
Tudor Inn, Cimla

Arboricultural Impact Assessment



10m

Arboricultural Impact Assessment



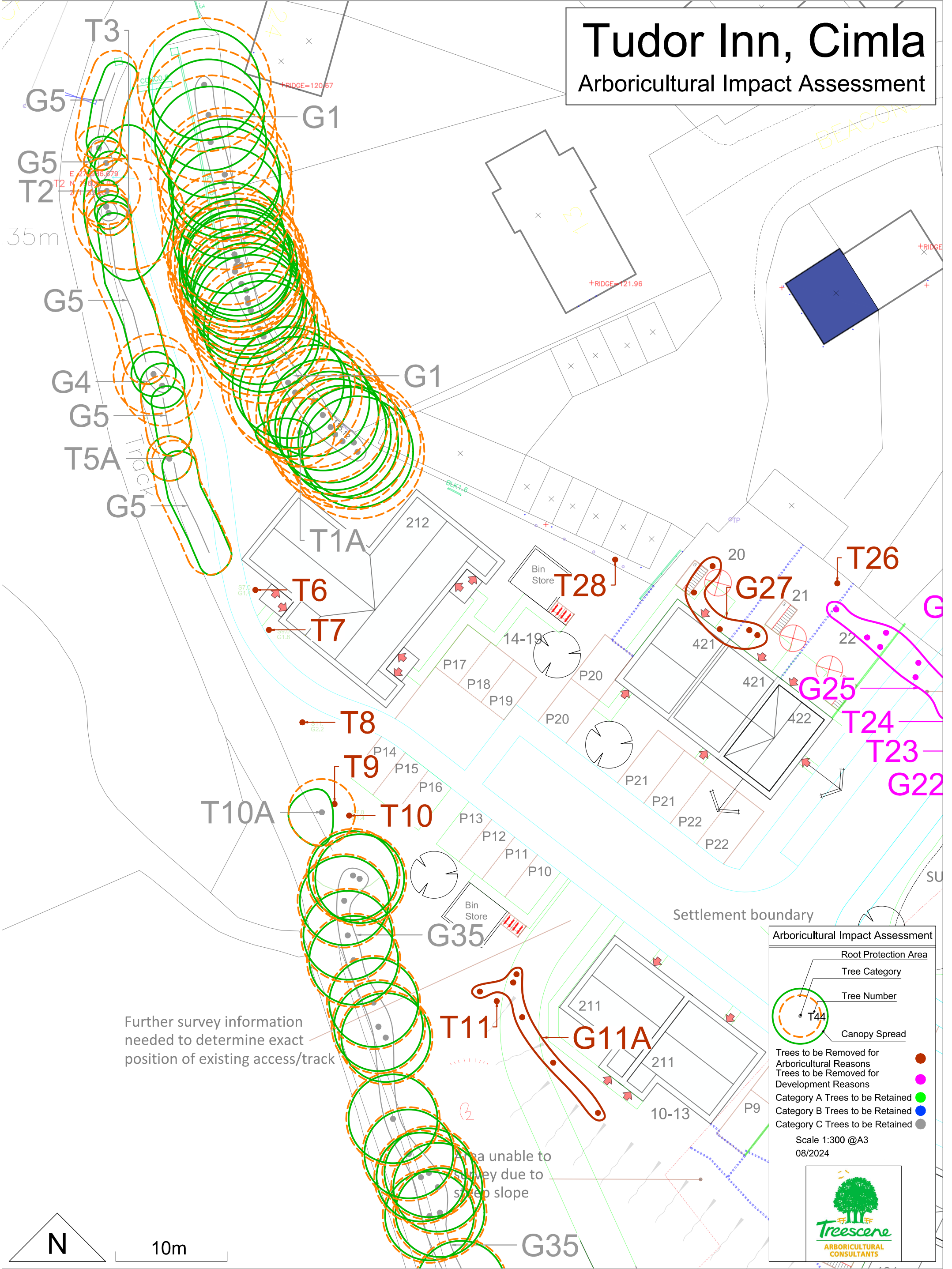
- Trees to be Removed for Arboricultural Reasons ●
- Trees to be Removed for Development Reasons ●
- Category A Trees to be Retained ●
- Category B Trees to be Retained ●
- Category C Trees to be Retained ●

Scale 1:600 @A3
08/2024



Tudor Inn, Cimla

Arboricultural Impact Assessment



Arboricultural Impact Assessment

- Root Protection Area
- Tree Category
- Tree Number
- Canopy Spread

Trees to be Removed for Arboricultural Reasons: ●

Trees to be Removed for Development Reasons: ●

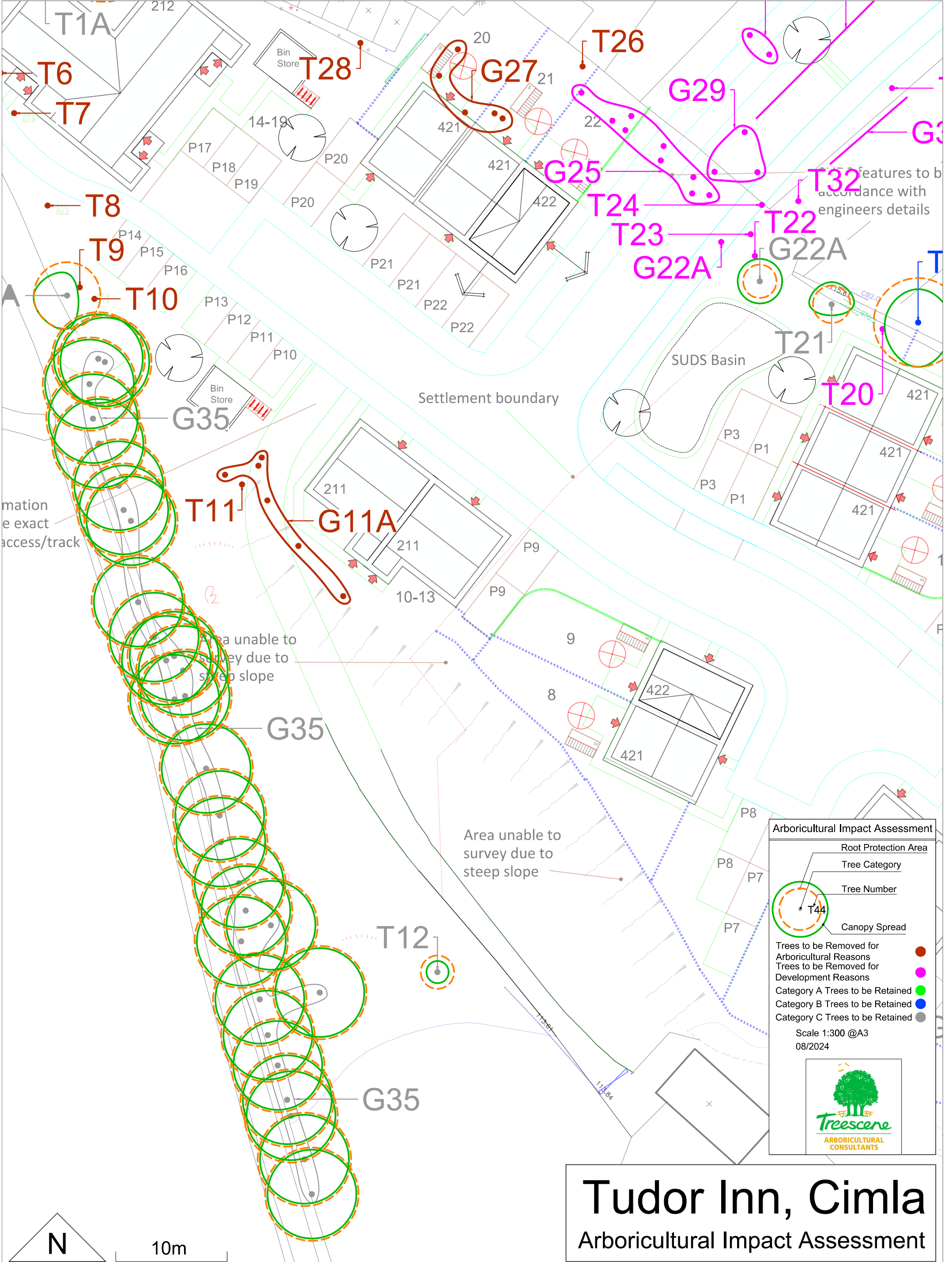
Category A Trees to be Retained: ●

Category B Trees to be Retained: ●

Category C Trees to be Retained: ●

Scale 1:300 @A3
08/2024

Treescene
ARBORICULTURAL CONSULTANTS



Arboricultural Impact Assessment

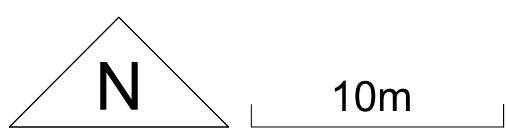
- Root Protection Area
- Tree Category
- Tree Number
- Canopy Spread

Trees to be Removed for Arboricultural Reasons ●
 Trees to be Removed for Development Reasons ●
 Category A Trees to be Retained ●
 Category B Trees to be Retained ●
 Category C Trees to be Retained ●

Scale 1:300 @A3
 08/2024

Tudor Inn, Cimla

Arboricultural Impact Assessment



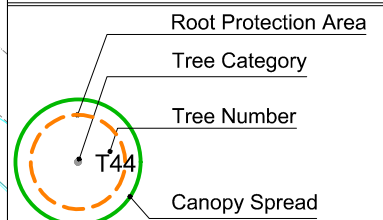
Tudor Inn, Cimla

Arboricultural Impact Assessment

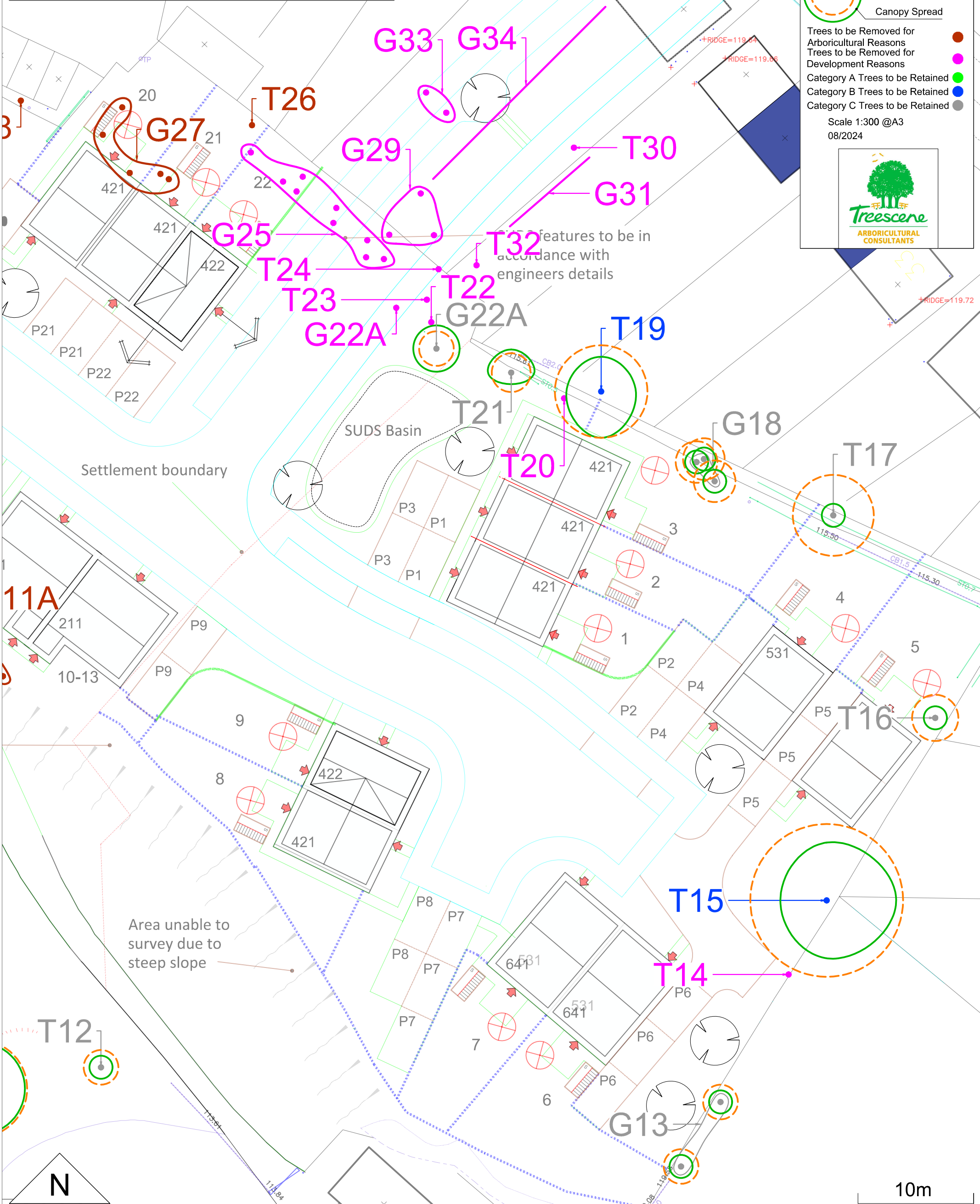
Existing semi-detached houses to be demolished to form proposed junction

with NPT Highways Dept.

Arboricultural Impact Assessment



- Trees to be Removed for Arboricultural Reasons ●
 - Trees to be Removed for Development Reasons ●
 - Category A Trees to be Retained ●
 - Category B Trees to be Retained ●
 - Category C Trees to be Retained ●
- Scale 1:300 @A3
08/2024



10m